

8208 DYNAMIC RAM CONTROLLER

- 0 Wait State, 8 MHz IAPX 186, IAPX 188, IAPX 86 and IAPX 88 Interface
- Provides all Signals necessary to Control 64K (2164A) and 256K Dynamic RAMs
- Supports Synchronous or Asynchronous Microprocessor Interfaces
- Automatic RAM Initialization
- Directly Addresses and Drives up to 1 Megabyte without External Drivers
- Microprocessor Data Transfer and Advance Acknowledge Signals
- Four Programmable Refresh Modes
- +5 Volt Only HMOSII Technology for High Performance and Low Power

The Intel 8208 Dynamic RAM Controller is a high performance, systems oriented, Dynamic RAM controller that is designed to easily interface 64K and 256K Dynamic RAMs to Intel and other microcomputer systems. The 8208 is designed to easily interface to the iAPX 186, iAPX 188, iAPX 86, and the iAPX 88 by strapping the programming pin to logic 0.

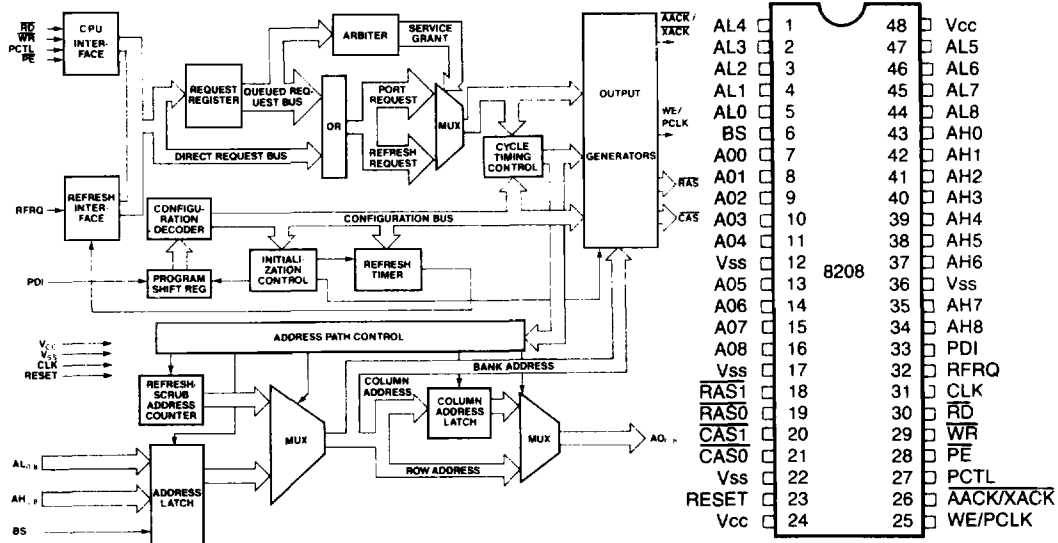


Figure 1. Block Diagram and Pinout Diagram

Table 1. Pin Description

Symbol	Pin	Type	Name and Function
AL0 AL1 AL2 AL3 AL4 AL5 AL6 AL7 AL8	5 4 3 2 1 47 46 45 44	I I I I I I I I I	ADDRESS LOW: These lower order address inputs are used to generate the row address for the internal address multiplexer.
BS	6	I	BANK SELECT: This input is used to select one of the two banks of the dynamic RAM array as defined by the program-bit RB.
AO0 AO1 AO2 AO3 AO4 AO5 AO6 AO7 AO8	7 8 9 10 11 13 14 15 16	O O O O O O O O O	ADDRESS OUTPUTS: These outputs are designed to provide the row and column addresses, of either the CPU or the refresh counter, to the dynamic RAM array. These outputs drive the dynamic RAM array directly and need no external drivers.
VSS	12 17 22 36	I I I I	GROUND GROUND GROUND GROUND
<u>RAS0</u> RAS1	19 18	O O	ROW ADDRESS STROBE: These outputs are used by the dynamic RAM array to latch the row address, present on the A00-8 pins. These outputs are selected by the BS pin as programmed by program-bit RB. These outputs drive the dynamic RAM array directly and need no external drivers.
<u>CAS0</u> CAS1	21 20	O O	COLUMN ADDRESS STROBE: These outputs are used by the dynamic RAM array to latch the column address, present on the A00-8 pins. These outputs are selected by the BS pin as programmed by program-bit RB. These outputs drive the dynamic RAM array directly and need no external drivers.
RESET	23	I	RESET: This active high signal causes all internal counters to be reset and upon release of RESET, data appearing at the PDI pin is clocked-in by the PCLK output. The states of the PDI, PCTL and RFRQ pins are sampled by RESET going inactive and are used to program the 8208. An 8 cycle dynamic RAM warm-up is performed after clocking PDI bits into the 8208.
WE/ PCLK	25	O	WRITE ENABLE/PROGRAMMING CLOCK: Immediately after a RESET this pin becomes PCLK and is used to clock serial programming data into the PDI pin. After the 8208 is programmed this active high signal provides the dynamic RAM array the write enable input for a write operation.
VCC	24 48	I I	POWER: +5 Volts. POWER: +5 Volts.
<u>AACK</u> / XACK	26	O	ADVANCE ACKNOWLEDGE/TRANSFER ACKNOWLEDGE: When the X programming bit is set to logic 0 this pin is AACK and indicates that the processor may continue processing and that data will be available when required. This signal is optimized for the system by programming the S program-bit for synchronous or asynchronous operation. The S programming bit determines whether this strobe will be early or late. If another dynamic RAM cycle is in progress at the time of the new request, the AACK is delayed. When the X programming bit is set to logic 1 this pin is XACK and indicates that data on the bus is valid during a read cycle or that data may be removed from the bus during a write cycle. XACK is a MULTIBUS compatible signal.
PCTL	27	I	PORT CONTROL: This pin is sampled on the falling edge of RESET. It configures the 8208 to accept command inputs or processor status inputs. If PCTL is low after RESET the 8208 is programmed to accept bus command inputs. If PCTL is high after RESET the 8208 is programmed to accept status inputs from iAPX 86 or iAPX 186 type processors. The S2 status line should be connected to this input if programmed to accept iAPX 86 or iAPX 186 status inputs. When programmed to accept bus commands it should be tied low or it may be connected to INHIBIT when operating with MULTIBUS.
PE	28	I	PORT ENABLE: This pin serves to enable a RAM cycle request. It is generally decoded from the address bus.

Table 1. Pin Description (Continued)

Symbol	Pin	Type	Name and Function
WR	29	I	WRITE: This pin is the write memory request command input. This input also directly accepts the S0 status line from Intel processors.
RD	30	I	READ: This pin is the read memory request command input. This input also directly accepts the S1 status line from Intel processors.
CLK	31	I	CLOCK: This input provides the basic timing for sequencing the internal logic
RFRQ	32	I	REFRESH REQUEST: This input is sampled on the falling edge of RESET. If RFRQ is high at RESET then the 8208 is programmed for internal-refresh request or external-refresh request with failsafe protection. If RFRQ is low at RESET then the 8208 is programmed for external-refresh without failsafe protection or burst-refresh. Once programmed the RFRQ pin accepts signals to start an external-refresh with failsafe protection or external-refresh without failsafe protection or a burst-refresh.
PDI	33	I	PROGRAM DATA INPUT: This input is sampled by RESET going low. It programs the various user selectable options in the 8208. The PCLK pin shifts programming data into the PDI input from an external shift register. This pin may be strapped low to a default iAPX 186 (PDI=Low) mode configuration.
AH0 AH1 AH2 AH3 AH4 AH5 AH6 AH7 AH8	43 42 41 40 39 38 37 35 34	I I I I I I I I I	ADDRESS HIGH: These higher order address inputs are used to generate the column address for the internal address multiplexer.

GENERAL DESCRIPTION

The Intel 8208 Dynamic RAM Controller is a microcomputer peripheral device which provides the necessary signals to address, refresh and directly drive 64K and 256K dynamic RAMs.

The 8208 supports several microprocessor interface options including synchronous and asynchronous operations for iAPX 86, iAPX 186, iAPX 188 and MULTIBUS.

FUNCTIONAL DESCRIPTION

Processor Interface

The 8208 has control circuitry capable of supporting one of several possible bus structures. The 8208 may be programmed to run synchronous or asynchronous to the processor clock. (See Synchronous/Asynchronous Mode) The 8208 has been optimized to run synchronously with Intel's iAPX 86, iAPX 88, iAPX

186 and iAPX 188. When the 8208 is programmed to run in asynchronous mode, the 8208 inserts the necessary synchronization circuitry for the RD, WR, PE, and PCTL inputs.

The 8208 achieves high performance (i.e. no wait states) by decoding the status lines directly from the iAPX 86, iAPX 88, iAPX 186 and the iAPX 188. The 8208 can also be programmed to receive read or write MULTIBUS commands or commands from a bus controller. (See Status/Command Mode)

The 8208 may be programmed to accept the clock of the iAPX 86, iAPX 88, iAPX 186 or 188. The 8208 adjusts its internal timing to allow for different clock frequencies of these microprocessors. (See Microprocessor Clock Frequency Option)

Figure 2 shows the different processor interfaces to the 8208 using the synchronous or asynchronous mode and status or command interface.

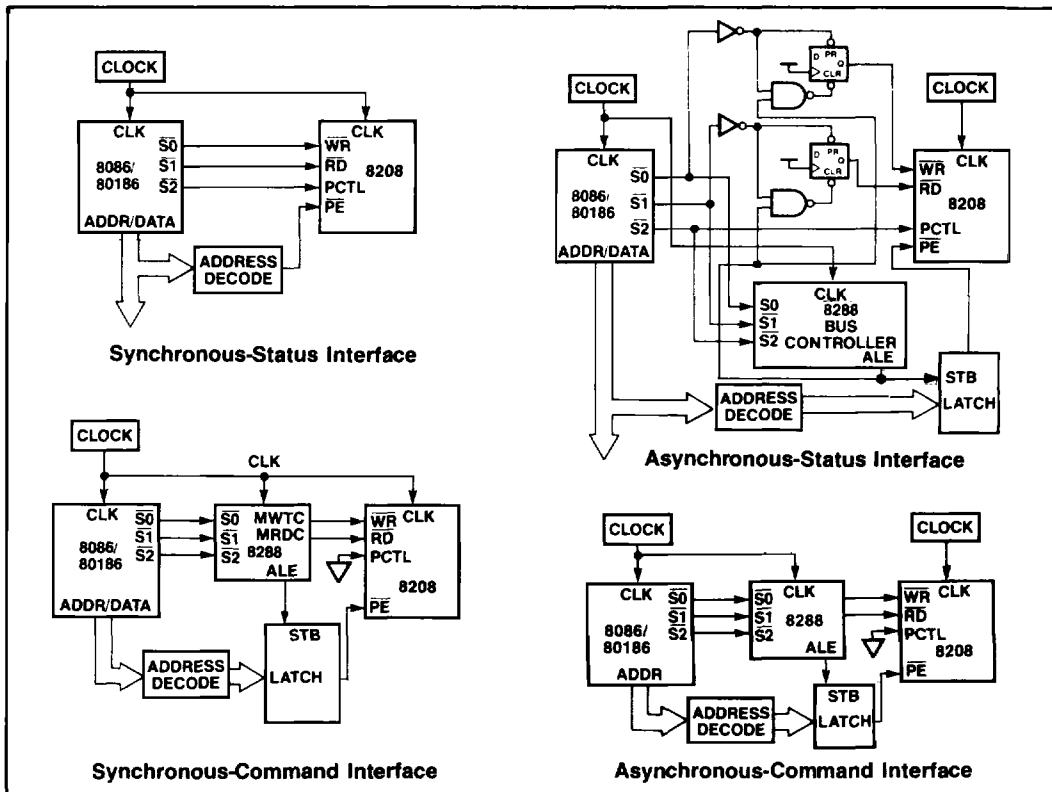


Figure 2. Interfaces Supported by the 8208.

Dynamic RAM Interface

The 8208 is capable of addressing 64K and 256K dynamic RAMs. Figure 3 shows the connection of the processor address bus to the 8208 using the different RAMs. The 8208 directly supports the 2164A RAM family or any RAM with similar timing requirements and responses.

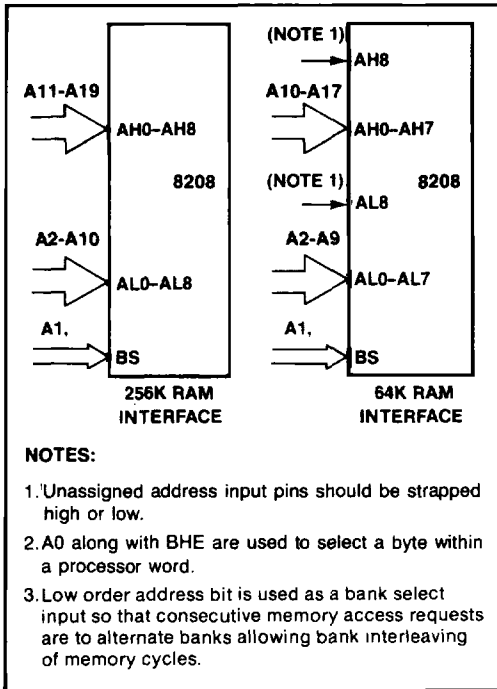


Figure 3. Processor Address Interface to the 8208 Using 64K, and 256K, RAMS

The 8208 divides memory into two banks, each bank having its own Row (\overline{RAS}) and Column (\overline{CAS}) Address Strobe pair. This organization permits RAM cycle interleaving. RAM cycle interleaving overlaps the start of the next RAM cycle with the RAM precharge period of the previous cycle. Hiding the precharge period of one RAM cycle behind the data access period of the next RAM cycle optimizes memory bandwidth and is effective as long as successive RAM cycles occur in the alternate banks.

Successive data access to the same bank cause the 8208 to wait for the precharge time of the previous RAM cycle. But when the 8208 is programmed in an iAPX 186 synchronous configuration consecutive read cycles to the same bank does not result in additional wait states (i.e. 0 wait state reads result).

If not all RAM banks are occupied, the 8208 reassigns the \overline{RAS} and \overline{CAS} strobes to allow using wider data words without increasing the loading on the \overline{RAS} and \overline{CAS} drivers. Table 2 shows the bank selection decoding and the horizontal word expansion, including \overline{RAS} and \overline{CAS} assignments. For example, if only one RAM bank is occupied, then the two \overline{RAS} and \overline{CAS} strobes are activated with the same timing.

Table 2. Bank Selection Decoding and Word Expansion

Program Bit RB	Bank Input BS	8208
		$\overline{RAS}/\overline{CAS}$ Pair Allocation
0	0	$\overline{RAS}_{0,1}, \overline{CAS}_{0,1}$ to Bank 0
0	1	Illegal
1	0	$\overline{RAS}_0, \overline{CAS}_0$ to Bank 0
1	1	$\overline{RAS}_1, \overline{CAS}_1$ to Bank 1

Program bit RB is not used to check the bank select input BS. The system design must protect from accesses to "illegal", non-existent banks of memory by deactivating the PE input when addressing an "illegal", non-existent bank of memory.

The 8208 adjusts and optimizes internal timings for either the fast or slow RAMs as programmed. (See RAM Speed Option)

Memory Initialization

After programming, the 8208 performs eight RAM "wake-up" cycles to prepare the dynamic RAM for proper device operation (during "warm-up" some RAM interface parameters may not be met, this should cause no harm to the dynamic RAM array).

Refresh

The 8208 provides an internal refresh interval counter and a refresh address counter to allow the 8208 to refresh memory. The 8208 will refresh 128 rows every 2 milliseconds or 256 rows every 4 milliseconds, which allows all RAM refresh options to be supported. In addition, there exists the ability to refresh 256 row address locations every 2 milliseconds via the Refresh Period programming option.

The 8208 may be programmed for any of five different refresh options: Internal refresh only, External refresh with failsafe protection, External refresh without failsafe protection, Burst Refresh modes, or no refresh. (See Refresh Options)

It is possible to decrease the refresh time interval by 10% 20% or 30%. This option allows the 8208 to compensate for reduced clock frequencies. Note that an additional 5% interval shortening is built-in in all refresh interval options to compensate for clock variations and non-immediate response to the internally generated refresh request. (See Refresh Period Options)

External Refresh Requests after RESET

External refresh requests are not recognized by the 8208 until after it is finished programming and preparing memory for access. Memory preparation includes 8 RAM cycles to prepare and ensure proper dynamic RAM operation. The time it takes for the 8208 to recognize a request is shown below.

eq. 8208 System Response: $TRESP = PROG + TPREP$
 where: $TPROG = (40) (TCLCL)$ which is programming time
 $TPREP = (8) (32) (TCLCL)$ which is the RAM warm-up time
 if $TCLCL = 125 \text{ ns}$ then $TRESP = 37 \text{ us}$

Reset

RESET is an asynchronous input, the falling edge of which is used by the 8208 to directly sample the logic levels of the PCTL, RFRQ, and PDI inputs. The internally synchronized falling edge of reset is used to begin programming operations (shifting in the contents of the external shift register, if needed, into the PDI input).

Differentiated reset is unnecessary when the default synchronization programming is used. ($\bar{S}=0$)

Until programming is complete the 8208 registers but does not respond to command or status inputs. A simple means of preventing commands or status from occurring during this period is to differentiate the system reset pulse to obtain a smaller reset pulse for the 8208. The total time of the 8208 reset pulse and the 8208 programming time must be less than the time before the first command the CPU issues in systems that alter the default port synchronization programming bit (default is synchronous interface).

The differentiated reset pulse would be shorter than the system reset pulse by at least the programming period required by the 8208. The differentiated reset pulse first resets the 8208, and system reset would reset the rest of the system. While the rest of the system is still in reset, the 8208 completes its programming. Figure 4 illustrates a circuit to accomplish this task.

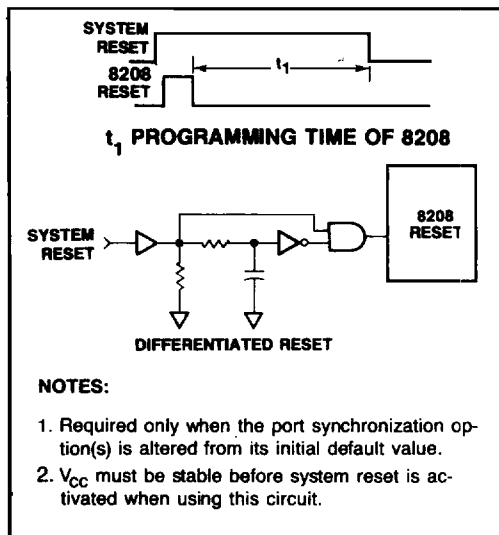


Figure 4. 8208 Differentiated Reset Circuit

Within four clocks after RESET goes active, all the 8208 outputs will go high, except for AO0-2, which will go low.

OPERATIONAL DESCRIPTION

Programming the 8208

The 8208 is programmed after reset. On the falling edge of RESET, the logic states of several input pins are latched internally. The falling edge of RESET actually performs the latching, which means that the logic levels on these inputs must be stable prior to that time. The inputs whose logic levels are latched at the end of reset are the PCTL, RFRQ, and PDI pins.

Status/Command Mode

The processor port of the 8208 is configured by the states of the PCTL pin. Which interface is selected depends on the state of the PCTL pin at the end of reset. If PCTL is high at the end of reset, the 80186 Status interface is selected; if it is low, then the MULTIBUS or Command interface is selected.

There exist two interface configurations, one for MULTIBUS memory commands, which is called the Command interface, and one for 8086, 8088, 80186 or 80188 status, called the 80186 Status interface. The Command interface also directly interfaces to the command lines of the bus controllers for the 8086, 8088.

The 80186 Status interface allows direct decoding of the status lines for the iAPX 86, iAPX 88, iAPX 186 and the iAPX 188. Table 3 shows how the status lines are decoded. Microprocessor bus controller read or write commands or MULTIBUS commands can also be directed to the 8208 when in Command mode.

Table 3. 8208 Response

8208 Command			Function	
PCTL	RD	WR	8086/80186 Status Interface	Multibus or Command Interface
0	0	0	IGNORE	IGNORE
0	0	1	IGNORE	READ
0	1	0	IGNORE	WRITE
0	1	1	IGNORE	IGNORE
1	0	0	READ	IGNORE
1	0	1	READ	INHIBIT
1	1	0	WRITE	INHIBIT
1	1	1	IGNORE	IGNORE

Refresh Options

Immediately after system reset, the state of the REFRQ input pin is examined. If REFRQ is high, the 8208 provides the user with the choice between self-refresh and user-generated refresh with failsafe protection. Failsafe protection guarantees that if the user does not come back with another refresh request before the internal refresh interval counter times out, a refresh request will be automatically generated. If the REFRQ pin is low immediately after a reset, then the user has the choice of a single external refresh cycle without failsafe, burst refresh or no refresh.

Internal Refresh Only

For the 8208 to generate internal refresh requests, it is necessary only to strap the REFRQ input pin high.

External Refresh with Failsafe

To allow user-generated refresh requests with failsafe protection, it is necessary to hold the REFRQ input high until after reset. Thereafter, a low-to-high transition on this input causes a refresh request to be generated and the internal refresh interval counter to be reset. A high-to-low transition has no effect on the 8208. A refresh request is not recognized until a previous request has been serviced.

External Refresh without Failsafe

To generate single external refresh requests without failsafe protection, it is necessary to hold REFRQ low until after reset. Thereafter, bringing REFRQ high for one clock period will cause a refresh request to be generated. A refresh request is not recognized until a previous request has been serviced.

Burst Refresh

Burst refresh is implemented through the same procedure as a single external refresh without failsafe (i.e., REFRQ is kept low until after reset). Thereafter, bringing REFRQ high for at least two clock periods will cause a burst of up to 128 row address locations to be refreshed. Any refresh request is not recognized until a previous request has been serviced (i.e. burst is completed).

No Refresh

It is necessary to hold REFRQ low until after reset. This is the same as programming External Refresh without Failsafe. No refresh is accomplished by keeping REFRQ low.

Option Program Data Word

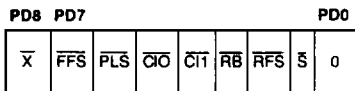
The program data word consists of 9 program data bits, PD0-PD8. If the first program data bit, PD0 is set to logic 0, the 8208 is configured to support iAPX 186, 188, 86, or 88 systems. The remaining bits, PD1-PD8, may then be programmed to optimize a selected system configuration. A default of all zeros in the remaining program bits optimizes the 8208 timing for 8 MHz Intel CPUs using 150 nS (or faster) dynamic RAMs with no performance penalty. Figure 5 shows the various options that can be programmed into the 8208.

Using an External Shift Register

The 8208 may be programmed by using an external shift register with asynchronous load capability such as a 74LS165. The reset pulse serves to parallel load the shift register and the 8208 supplies the clocking signal (PCLK) to shift the data into the PDI programming pin. Figure 6 shows a sample circuit diagram of an external shift register circuit.

Serial data is shifted into the 8208 via the PDI pin (33), and clock is provided by the WE/PCLK pin (23), which generates a total of 9 clock pulses. After programming is complete, data appearing at the input of the PDI pin is ignored. WE/PCLK is a dual function pin.

During programming, it serves to clock the external shift register, and after programming is completed, it reverts to the write enable RAM control output pin. As the pin changes state to provide the write enable signal to the dynamic RAM array, it continues to clock the shift register. This does not present a problem because data at the PDI pin is ignored after programming. Figure 7 illustrates the timing requirements of the shift register.



PROGRAM DATA BIT	NAME	POLARITY/FUNCTION
PD0	CFS	MUST BE ZERO
PD1	\overline{S}	$\overline{S} = 0$ SYNCHRONOUS $\overline{S} = 1$ ASYNCHRONOUS
PD2	\overline{RFS}	$\overline{RFS} = 0$ FAST RAM $\overline{RFS} = 1$ SLOW RAM
PD3	\overline{RB}	RAM BANK OCCUPANCY SEE TABLE 2
PD4	$\overline{CI1}$	COUNT INTERVAL BIT 1; SEE TABLE 6
PD5	$\overline{CI0}$	COUNT INTERVAL BIT 0; SEE TABLE 6
PD6	\overline{PLS}	$\overline{PLS} = 0$ LONG REFRESH PERIOD $\overline{PLS} = 1$ SHORT REFRESH PERIOD
PD7	\overline{FFS}	$\overline{FFS} = 0$ FAST CPU FREQUENCY $\overline{FFS} = 1$ SLOW CPU FREQUENCY
PD8	\bar{X}	$X = 0$ AACK $X = 1$ XACK

Figure 5. Program Data Word

Default Programming Options

After reset, the 8208 serially shifts in a program data word via the PDI pin. This pin may be strapped low, or connected to an external shift register. Strapping PDI low causes the 8208 to default to the iAPX 186 system configuration. Table 4 shows the characteristics of the default configuration. If further system flexibility is needed, one external shift register, like a 74LS165, can be used to tailor the 8208 to its operating environment. Figure 8 illustrates an iAPX 186 and 8208 system.

Table 4. Programming, PDI Pin Tied to Ground.

Synchronous 80186 interface
2 RAM banks occupied
Fast processor clock frequency (8 MHz)
Fast RAM (Note 1)
Refresh interval uses 118 clocks
128 row refresh in 2 ms; 256 row refresh in 4 ms
Advanced ACK strobe

NOTE:

- For iAPX 186 systems either slow or fast (150 or 100 ns) RAMS are ok to use.

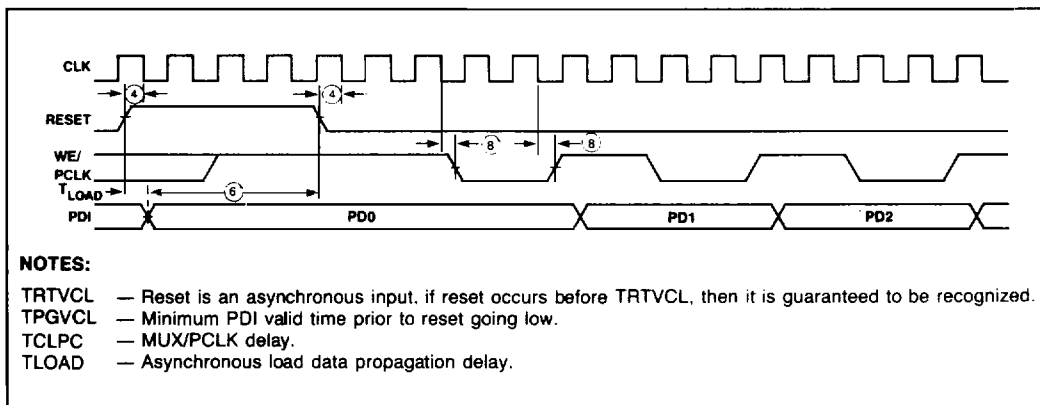


Figure 6. Timing Illustrating External Shift Register Requirements for Programming the 8208.

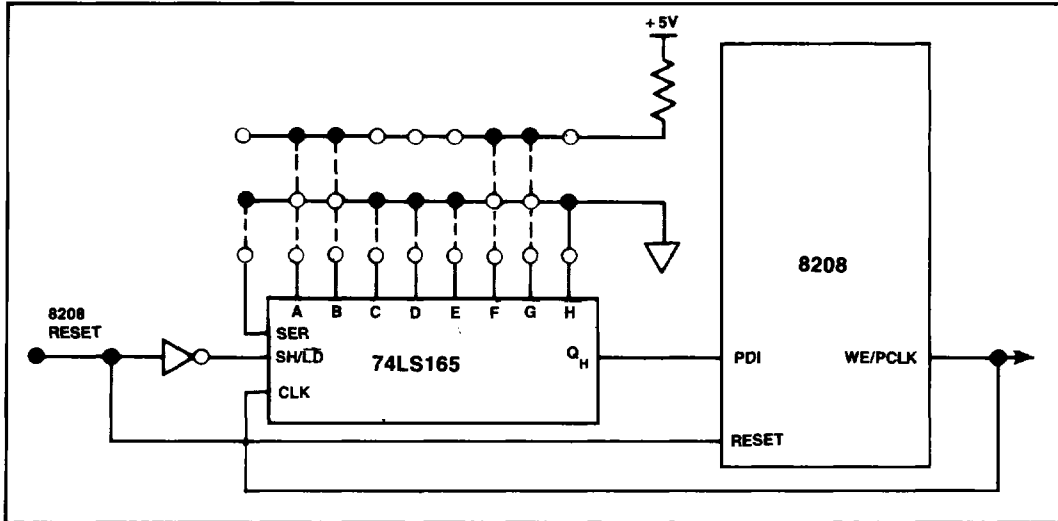


Figure 7. External Shift Register Interface

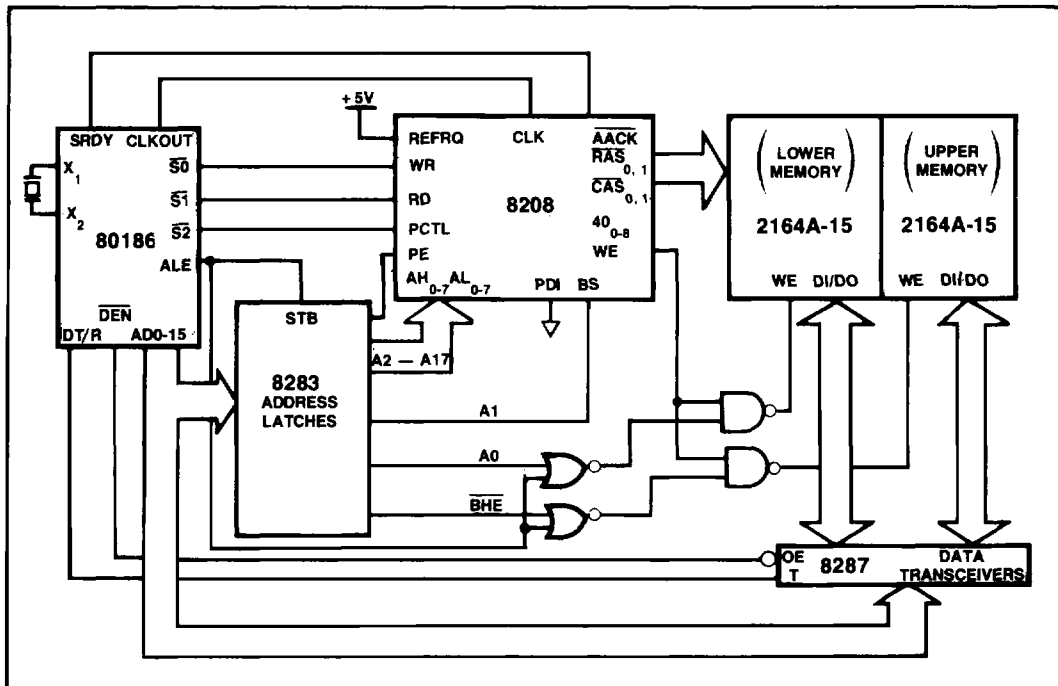


Figure 8. 8208 Interface to an 80186

Synchronous/Asynchronous Mode (S program bit)

The 8208 may be independently configured to accept synchronous or asynchronous commands (RD, WR, PCTL) and Port Enable (PE) via the S program bit. The state of the S programming bit determines whether the interface is synchronous or asynchronous.

While the 8208 may be configured with either the 80186 Status or Command (MULTIBUS) interface in the Synchronous mode, certain restrictions exist in the Asynchronous mode. An Asynchronous-Command interface using the control lines of the MULTIBUS is supported, and an Asynchronous-80186 Status interface using the status lines of the 80186 is supported, with the use of TTL gates as illustrated in Figure 2. In the 80186 case, the TTL gates are needed to guarantee that status does not appear at the 8208's inputs too much before address, so that a cycle would start before address was valid.

Microprocessor Clock Cycle Option (CFS and FFS program bits)

The 8208 can be programmed to interface with microprocessors with slow cycle microprocessors like the 8086, 8088, 80186, and 80188 cycle timing. The CFS bit configures the microprocessor interface to accept signals from either microprocessor group or commands from MULTIBUS. The CFS programming bit must be programmed to logic 0.

The FFS option is used to select the speed of the microprocessor clock. Table 5 shows the various microprocessor clock frequency options that can be programmed. The external clock frequency must be programmed so that the failsafe refresh repetition circuitry can adjust its internal timing accordingly to produce a refresh request as programmed.

Table 5. Microprocessor Clock Frequency Options.

Program Bits		Processor	Clock Frequency
CFS	FFS		
0	0	iAPX 86, 88, 186	5 MHz
0	1	iAPX 86, 88, 186	8 MHz

RAM Speed Option (RFS program bit)

The RAM Speed programming option determines whether RAM timing will be optimized for a fast or slow RAM. Whether a RAM is fast or slow is measured relative to the 2118-10 (Fast) or the 2118-15 (Slow) RAM specifications.

Refresh Period Options (CI0 CI1 and PLS program bits)

The 8208 refreshes with either 128 rows every 2 milliseconds or the 256 rows every 4 milliseconds. This translates to one refresh cycle being executed approximately once every 15.6 microseconds. This rate can be changed to 256 rows every 2 milliseconds or a refresh approximately once every 7.8 microseconds via the Period Long/Short, program bit PLS, programming option.

The Count Interval 0 (CI0) and Count Interval 1 (CI1) programming options allow the rate at which refresh requests are generated to be increased in order to permit refresh requests to be generated close to the 15.6 or 7.8 microsecond period when the 8208 is operating at reduced frequencies. The interval between refreshes is decreased by 0%, 10%, 20%, or 30% as a function of how the count interval bits are programmed. A 5% guardband is built-in to allow for any clock frequency variations. Table 6 shows the refresh period options available.

Table 6. Refresh Count Interval Table

Freq. (MHz)	Ref. Period (µS)	CFS	PLS	FFS	Count Interval CI1, CI0 (8208 Clock Periods)			
					00 (0%)	01 (10%)	10 (20%)	11 (30%)
8	15.6	0	1	1	118	106	94	82
	7.8	0	0	1	59	53	47	41
5	15.6	0	1	0	74	66	58	50
	7.8	0	0	0	37	33	29	25

The numbers tabulated under Count Interval represent the number of clock periods between internal refresh requests. The percentages in parentheses represent the decrease in the interval between refresh requests. Note that all intervals have a built-in 5% (approximately) safety factor to compensate for minor clock frequency deviations and non-immediate response to internal refresh requests.

Processor Timing

In order to run without wait states, \overline{AACK} must be used and connected to the \overline{SRDY} input of the appropriate bus controller. \overline{AACK} is issued relative to a point within the RAM cycle and has no fixed relationship to the processor's request. The timing is such, however, that the processor will run without wait states, barring refresh cycles, and bank precharge. In slow cycle, fast RAM configurations (8086, 80186), \overline{AACK} is issued on the same same clock cycle that issues \overline{RAS} .

Port Enable (\overline{PE}) set-up time requirements depend on whether the 8208 is configured for synchronous or asynchronous, fast or slow cycle operation. In a synchronous fast cycle configuration, \overline{PE} is required to be set-up to the same clock edge as the commands. If \overline{PE} is true (low), a RAM cycle is started; if not, the cycle is aborted.

In asynchronous operation, \overline{PE} is required to be set-up to the same clock edge as the internally synchronized status or commands. Externally, this allows the internal synchronization delay to be added to the status (or command) -to- \overline{PE} delay time, thus allowing for more external decode time than is available in synchronous operation.

The minimum synchronization delay is the additional amount that \overline{PE} must be held valid. If \overline{PE} is not held valid for the maximum synchronization delay time, it is possible that \overline{PE} will go invalid prior to the status or command being synchronized. In such a case the 8208 aborts the cycle. If a memory cycle intended for the 8208 is aborted, then no acknowledge (\overline{AACK} or \overline{XACK}) is issued and the processor locks up in endless wait states.

Memory Acknowledge (\overline{AACK} , \overline{XACK})

Two type of memory acknowledge signals are supplied by the 8208. They are the Advanced Acknowledge strobe (\overline{AACK}) and the Transfer Acknowledge strobe (\overline{XACK}). The S programming bit optimizes \overline{AACK} for synchronous operation ("early" \overline{AACK}) or asynchronous operation ("late" \overline{AACK}). Both the early and late \overline{AACK} strobes are two clocks

long. The \overline{XACK} strobe is asserted when data is valid (for reads) or when data may be removed (for writes) and meets the MULTIBUS requirements. \overline{XACK} is removed asynchronously by the command going inactive.

Since in a asynchronous operation the 8208 removes read data before late \overline{AACK} or \overline{XACK} is recognized by the CPU, the user must provide for data latching in the system until the CPU reads the data. In synchronous operation data latching is unnecessary, since the 8208 will not remove data until the CPU has read it.

If the X programming bit is high, the strobe is configured as \overline{XACK} , while if the bit is low, the strobe is configured as \overline{AACK} .

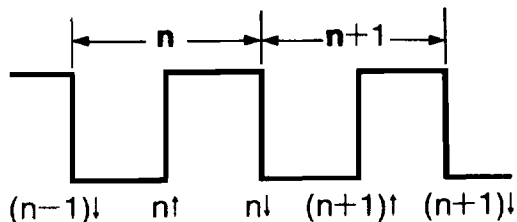
Data will always be valid a fixed time after the occurrence of the advanced acknowledge. Thus, the advanced acknowledge may also serve as a RAM cycle timing indicator.

General System Considerations

The $\overline{RAS}_{0,1}$, $\overline{CAS}_{0,1}$ and AO0-8 output buffers are designed to directly drive the heavy capacitive loads associated with dynamic RAM arrays. To keep the RAM driver outputs from ringing excessively in the system environment it is necessary to match the output impedance with the RAM array by using series resistors. Each application may have different impedance characteristics and may require different series resistance values. The series resistance values should be determined for each application.

Using the Timing Charts

The notation used to indicate which clock edge triggers an output transition is "n↑" or "n↓", where "n" is the number of clock periods that have passed since clock 0, the reference clock, and "↑" refers to rising edge and "↓" to falling edge. A clock period is defined as the interval from a clock falling edge to the following falling edge. Clock edges are defined as shown below.



The clock edges which trigger transitions on each 8208 output are tabulated in Table 7. "H" refers to the high-going transition, and "L" to low-going transition; "V" refers to valid, and "V" to non valid.

Clock 0 is defined as the clock in which the 8208 begins a memory cycle, either as a result of a port request which has just arrived, or of a port request which was stored previously but could not be serviced at the time of its arrival because the 8208 was performing another memory cycle, Clock 0 may

be identified externally by the leading edge of \overline{RAS} , which is always triggered on 0↓.

NOTES FOR INTERPRETING THE TIMING CHARTS:

1. COLUMN ADDRESS is the time column address becomes valid.
2. The \overline{CAS} , \overline{EAACK} , \overline{LAACK} and \overline{XACK} outputs are not issued during refresh.
3. \overline{XACK} - high is reset asynchronously by command going inactive and not be a clock edge.

Table 7. Timing Chart.

CYCLE	\overline{RAS}		COLUMN ADDRESS		\overline{CAS}		WE		\overline{EAACK}		\overline{LAACK}		\overline{XACK}	
	L	H	V	\overline{V}	L	H	H	L	L	H	L	H	L	H
RD, RF	0↓	2↓	0↓	2↓	0↓	3↓	—	—	0↓	2↓	1↓	3↓	2↓	\overline{RD}
WR	0↓	4↓	0↓	3↓	1↓	4↓	0↓	4↓	0↓	2↓	1↑	3↑	2↓	\overline{WR}

8208-DRAM Interface Parameter Equations

Several DRAM parameters, but not all, are a direct function of 8208 timings, and the equations for these parameters are given in the following tables. The following is a list of those DRAM parameters which have NOT been included in the following tables, with an explanation for their exclusion.

READ, WRITE REFRESH CYCLES

- t_{RA}C: response parameter.
- t_{CA}C: response parameter.
- t_{RE}F: See "Refresh Period Options".
- t_{CR}P: must be met only if CAS-only cycles, which do not occur with 8208, exist.
- t_{RA}H: See "A.C. Characteristics"
- t_{RC}D: See "A.C. Characteristics"
- t_{AS}C: See "A.C. Characteristics"
- t_{AS}R: See "A.C. Characteristics"
- t_{OFF}: response parameter.

WRITE CYCLE

- t_{DS}: system-dependent parameter.
- t_{DH}: system-dependent parameter.
- t_{DHR}: system-dependent parameter.

NOTES:

1. Minimum
2. Value on right is maximum; value on left is minimum.
3. Applies to the eight warm-up cycles during initialization only
4. TP = TCLCL T35 = TCLCSH
 T26 = TCLRSL T36 = TCLW
 T34 = TCLCSL TBUF = TTL buffer delay

Table 8. RD, RF & WR Cycles

Parameter	Rd, RF Cycles	Notes
t _{RP}	2TCLCL—T26	1
t _{CPN}	2.5TCLCL—T35	1
t _{RS} H	3TCLCL—T34	1
t _{CS} H	3TCLCL—T26	1
t _{CA} H	2TCLCL—T34	1
t _{AR}	2TCLCL—T26	1
t _T	3/30	2
t _{RC}	4TCLCL	1
t _{RAS}	2TCLCL—T26	1
t _{CAS}	3TCLCL—T34	1
t _{RCS}	1.5TCLCL—TCL—T36—TBUF	1
t _{RCH}	0.5TCLCL—T34	1
Parameter	WR Cycles	Notes
t _{RP}	2TCLCL—T26	1
t _{CPN}	2.5TCLCL—T35	1
t _{RS} H	3TCLCL—T34	1
t _{CS} H	4TCLCL—T26	1
t _{CA} H	2TCLCL—T34	1
t _{AR}	3TCLCL—T26	1
t _T	3/30	2
t _{RC}	6TCLCL	1
t _{RAS}	4TCLCL—T26	1
t _{CAS}	TCLCL—T34	1
t _{WCH}	3TCLCL—T34	1, 3
t _{WCR}	4TCLCL—T26	1, 3
t _{WP}	4TCLCL—T36—TBUF	1
t _{RWL}	4TCLCL—T36—TBUF	1
t _{CWL}	4TCLCL—T36—TBUF	1
TWCS	TCLCL—T36—TBUF	

ABSOLUTE MAXIMUM RATINGS

Ambient Temperature
 Under Bias 0°C to +70°C
 Storage Temperature -65°C to +150°C
 Voltage On Any Pin With
 Respect to Ground -5V to +7V
 Power Dissipation 2 Watts

NOTICE: Stress above those listed under "Absolute Maximum Ratings" may cause permanent damage to the device. This is a stress rating only and functional operation of the device at these or any other conditions above those indicated in the operational sections of this specification is not implied. Exposure to absolute maximum rating conditions for extended periods may affect device reliability.

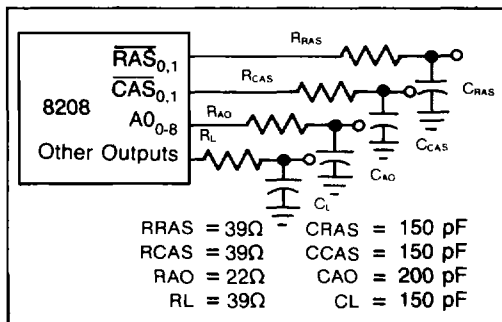
D.C. CHARACTERISTICS ($T_A = 0^\circ\text{C}$ to $+70^\circ\text{C}$, $V_{CC} = 5.0\text{V} \pm 5\%$ $V_{SS} = \text{GND}$)

Symbol	Parameter	Min.	Max.	Units	Comments
V_{IL}	Input Low Voltage	-0.5	+0.8	V	
V_{IH}	Input High Voltage	2.0	$V_{CC} + 0.5$	V	
V_{OL}	Output Low Voltage		0.45	V	Note 1
V_{OH}	Output High Voltage	2.4		V	Note 1
V_{ROL}	RAM Output Low Voltage		0.45	V	Note 1
V_{ROH}	RAM Output High Voltage	2.6		V	Note 1
I_{CC}	Supply Current		280	mA	$T_A = 25^\circ\text{C}$
I_{LI}	Input Leakage Current		+10	μA	$0\text{V} \leq V_{IN} \leq V_{CC}$
V_{CL}	Clock Input Low Voltage	-0.5	+0.6	V	
V_{CH}	Clock Input High Voltage	3.8	$V_{CC} + 0.5$	V	
C_{IN}	Input Capacitance		20	pF	$f_c = 1\text{ MHz}$

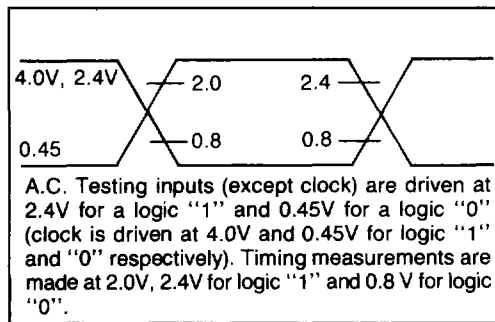
NOTES:

1. $I_{OL} = 8\text{ mA}$ and $I_{OH} = -0.2\text{ mA}$ (typically $I_{OL} = 10\text{ mA}$ and $I_{OH} = -0.25\text{ mA}$)

A.C. Testing Load Circuit



A.C. Testing Input, Output Waveform



A.C. CHARACTERISTICS ($T_a = 0$ to 70 C $V_{CC} = +5V \pm 5\%$)

Measurements made with respect to \overline{RAS}_0 , 1, \overline{CAS}_0 , 1, $\overline{A00-8}$ are at 2.4V and 0.8 V. All other pins are measured at 2.0V and 0.8V. All times in nsec unless otherwise indicated. AC testing done with specified test load.

CLOCK AND PROGRAMMING

Ref.	Symbol	Parameter	8208		8208-5		Units	Notes
			Min.	Max.	Min.	Max.		
—	IF	Clock Rise Time		10		15	ns	
—	IF	Clock Fall Time		10		15	ns	
1	TCLCL	Clock Period	125	500	200	500	ns	
2	TCL	Clock Low Time	TCLCL/2-12		TCLCL/2-12		ns	
3	TCH	Clock High Time	TCLCL/3		TCLCL/3		ns	
4	TRTVCL	Reset to CLK \uparrow Setup	40		65		ns	1
5	TRTH	Reset Pulse Width	4 TCLCL		4 TCLCL		ns	
6	TPGVRTL	PCTI, PDI, RFRQ to RESET \uparrow Setup	125		200		ns	2
7	TRTLPGX	PCTI, RFRQ to RESET \uparrow Hold	10		10		ns	
8	TCLPC1	PCLK from CLK \uparrow Delay		45		65	ns	
9	TPDVCL	PDI to CLK \uparrow Setup	60		100		ns	
10	TCLPDX	PDI to CLK \uparrow Hold	40		65		ns	3

SYNCHRONOUS μ P INTERFACE

11	TKVCH	\overline{RD} , \overline{WR} , PCTL to CLK \uparrow Setup	20		30		ns	
12	TCLKX	\overline{RD} , \overline{WR} , \overline{PE} , PCTL to CLK \uparrow Hold	0		0		ns	
13	TPEVCL	\overline{PE} to CLK \uparrow Setup	30		50		ns	

ASYNCHRONOUS μ P INTERFACE

14	TRWVCL	\overline{RD} , \overline{WR} to CLK \uparrow Setup	20		30		ns	
15	TRWL	\overline{RD} , \overline{WR} Pulse Width	2TCLCL + 30		2TCLCL + 50		ns	
16	TRWLPEV	\overline{PE} from \overline{RD} , \overline{WR} \uparrow Delay		TCLCL-30		TCLCL-50	ns	
17	TRWLPEX	\overline{PE} to \overline{RD} , \overline{WR} \uparrow Hold	2TCLCL + 30		2TCLCL + 50		ns	
18	TRWLPT	PCTL from \overline{RD} , \overline{WR} \uparrow Delay		TCLCL-30		TCLCL-50	ns	
19	TRWLPTX	PCTL to \overline{RD} , \overline{WR} \uparrow Hold	2TCLCL + 30		2TCLCL + 50		ns	

RAM INTERFACE

20	TAVCL	AL, AH, BS to CLK \uparrow Setup	35 + tASR		55 + tASR		ns	4
21	TCLAX	AL, AH, BS to CLK \uparrow Hold	0		0		ns	
22	TCLRSL	\overline{RAS} \uparrow from CLK \uparrow Delay		35		55	ns	
23	tRCD	\overline{RAS} to \overline{CAS} Delay	TCLCL/2-25 75		60		ns ns	5,7,8 6,7,8
24	TCLRSR	\overline{RAS} \uparrow from CLK \uparrow Delay		50		70	ns	
25	tASR	Row AO to \overline{RAS} \uparrow Setup						4,10
26	tRAH	Row AO to \overline{RAS} \uparrow Hold	TCLCL/4-10 40		30		ns ns	5,7,9 6,7,9
27	tASC	Column AO to \overline{CAS} \uparrow Setup	5		5		ns	7,11,12
28	tCAH	Column AO to \overline{CAS} Hold		(See DRAM Interface Tables)				13

A.C. CHARACTERISTICS (Continued)

RAM Interface (Continued)

Ref.	Symbol	Parameter	8208		8208-5		Units	Notes
			Min.	Max.	Min.	Max.		
29	TCLCSL	\overline{CAS}^{\dagger} from CLK^{\dagger} Delay	TCLCL/2	TCLCL/1.8 + 53	TCLCL/2	TCLCL/1.8 + 78	ns	
30	TCLCSH	\overline{CAS}^{\dagger} from CLK^{\dagger} Delay		50		70	ns	
31	TCLWH	WE^{\dagger} from CLK^{\dagger} Delay	TCLCL/2	TCLCL/1.8 + 53	TCLCL/2	TCLCL/1.8 + 78	ns	
32	TCLWL	WE^{\dagger} from CLK^{\dagger} Delay		35		55	ns	
33	TCLTKL	$\overline{XACK}^{\dagger}$ from CLK^{\dagger} Delay		35		55	ns	
34	TRWLTKH	$\overline{XACK}^{\dagger}$ from RD^{\dagger} , WR^{\dagger} Delay		50		60	ns	
35	TCLAKL	$\overline{AACK}^{\dagger}$ from CLK^{\dagger} Delay		35		55	ns	
36	TCLAKH	$\overline{AACK}^{\dagger}$ from CLK^{\dagger} Delay		50		70	ns	

REFRESH REQUEST

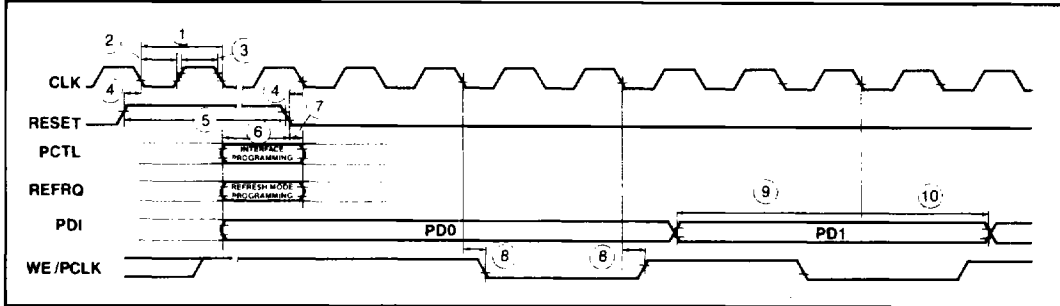
37	TRFVCL	RFRQ to CLK^{\dagger} Setup	20		30		ns	
38	TCLRFX	RFRQ to CLK^{\dagger} Hold	10		10		ns	
39	TFRFH	Failsafe RFRQ Pulse Width	TCLCL + 30		TCLCL + 50		ns	14
40	TRFXCL	Single RFRQ inactive to CLK^{\dagger} Setup	20		30		ns	15
41	TBRFH	Burst RFRQ Pulse Width	2TCLCL + 30		2TCLCL + 50		ns	14

NOTES:

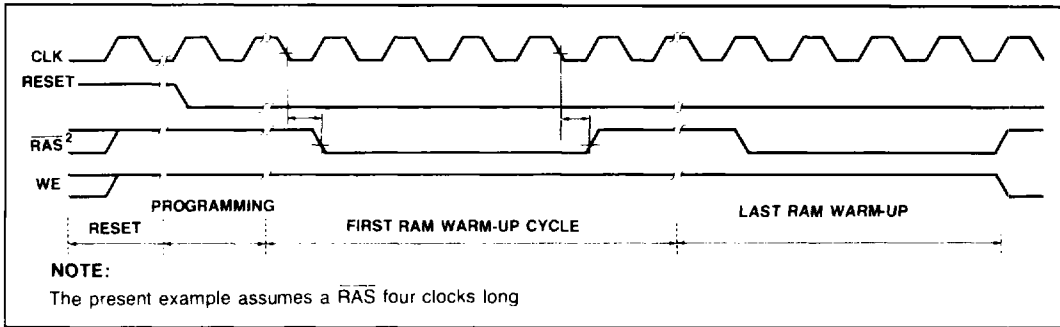
1. RESET is internally synchronized to CLK. Hence a set-up time is required only to guarantee its recognition at a particular clock edge.
2. The first programming bit (PD0) is also sampled by RESET going low.
3. TCLPDX is guaranteed if programming data is shifted using PCLK.
4. tASR is a user specified parameter and its value should be added accordingly to TAVCL.
5. When programmed in Slow Cycle mode and $125\text{ ns} \leq \text{TCLCL} < 200\text{ ns}$.
6. When programmed in Slow Cycle mode and $200\text{ ns} \leq \text{TCLCL}$.
7. Specification for Test Load Conditions.
8. $t_{RCD}(\text{actual}) = t_{RCD}(\text{specification}) + 0.06(\Delta C_{RAS}) - 0.06(\Delta C_{CAS})$
where $\Delta C = C(\text{test load}) - C(\text{actual})$ in pF.
9. $t_{RAH}(\text{actual}) = t_{RAH}(\text{specification}) + 0.06(\Delta C_{RAS}) - 0.022(\Delta C_{AO})$
where $\Delta C = C(\text{test load}) - C(\text{actual})$ in pF.
10. $t_{ASR}(\text{actual}) = t_{ASR}(\text{specification}) + 0.06(\Delta C_{AO}) - 0.025(\Delta C_{RAS})$
where $\Delta C = C(\text{test load}) - C(\text{actual})$ in pF.
11. $t_{ASC}(\text{actual}) = t_{ASC}(\text{specification}) + 0.06(\Delta C_{AO}) - 0.025(\Delta C_{CAS})$
where $\Delta C = C(\text{test load}) - C(\text{actual})$ in pF.
12. tASC is a function of clock frequency and thus varies with changes in frequency. A minimum value is specified.
13. See 8208 DRAM Interface Tables.
14. TFRFH and TBRFH pertain to asynchronous operation only.
15. Single RFRQ cannot be supplied asynchronously.

WAVEFORMS

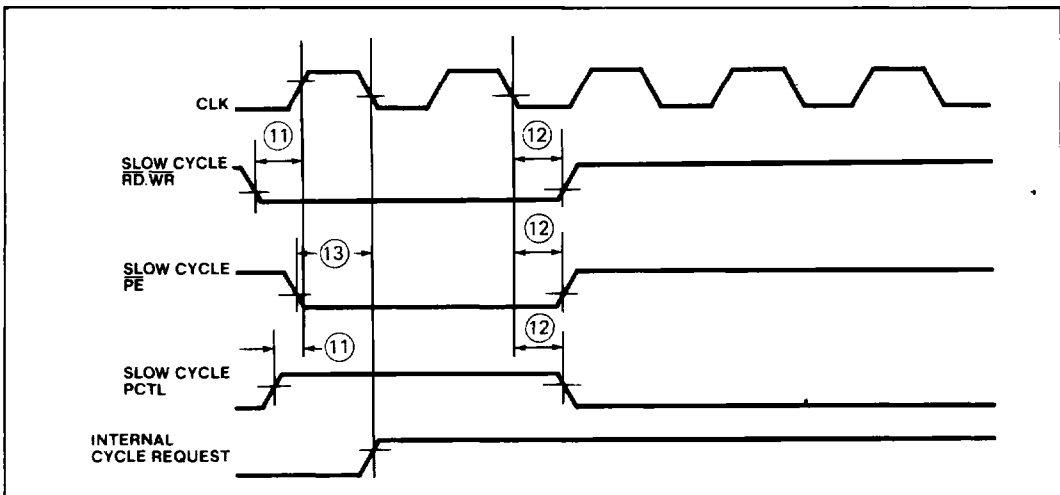
Clock and Programming Timings



RAM Warm-up Cycles

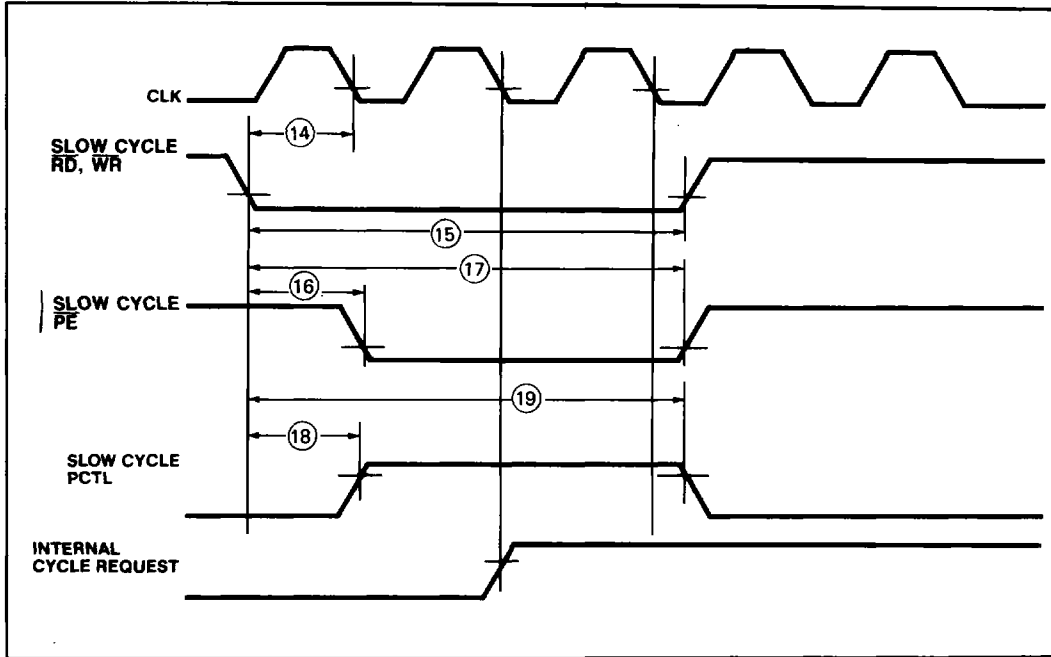


Synchronous Port Interface

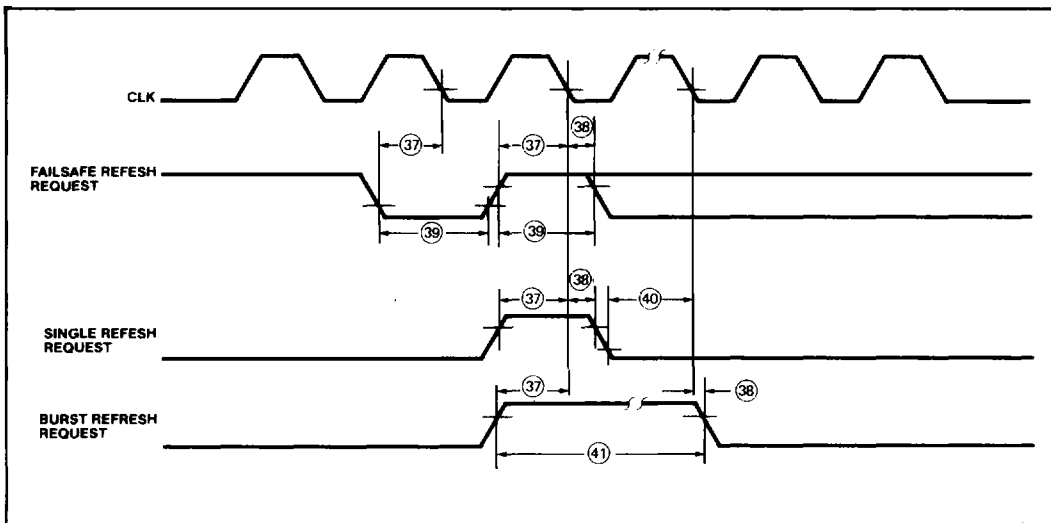


WAVEFORMS (Continued)

Asynchronous Port Interface



Refresh Request Timing



WAVEFORMS (Continued)

RAM Interface Timing

