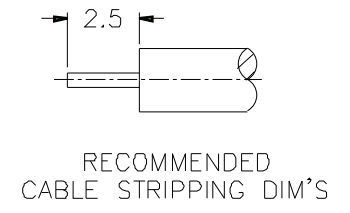
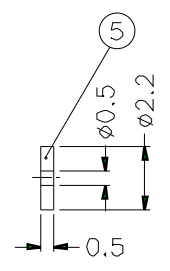
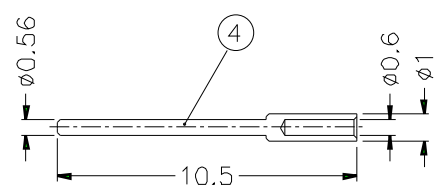
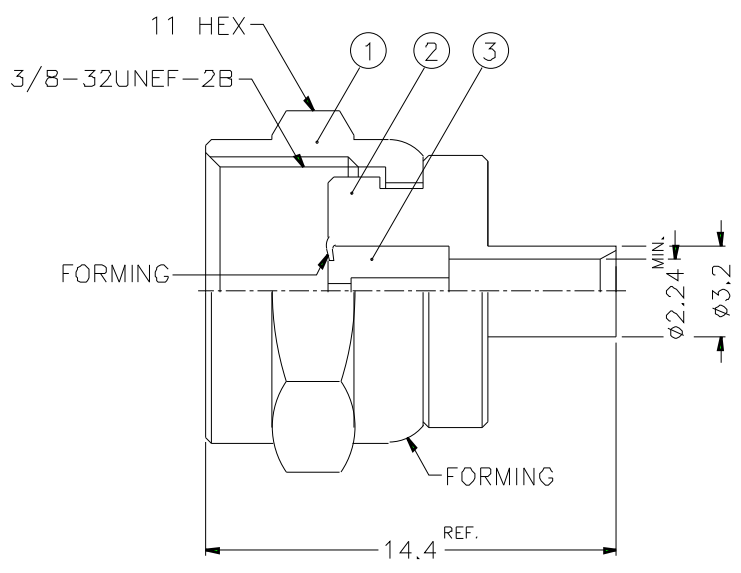


1										2										3										4										5										6										7										8									
ISS										ZONE										REVISIONS										DESCRIPTION										DATE										DATE																													



NOTES: FINISH (PLATING THICKNESS IN MICRO-INCHES)  
 1. BRASS PER QQ-B-626  
 2. TIN-LEAD (90/10) PL. 100 MIN. OVER NICKEL PL. 50 MIN. OVER COPPER PL. 100 MIN.  
 3. BRIGHT TIN PL. 200 MIN. THICK OVER NICKEL PL. 50 MIN. THICK OVER COPPER PL. 100 MIN. THICK  
 4. TEFLON MIL-P-19468

1. CRIMPED CONTACT PIN  
 SQ. CRIMP SIZE (0.7)mm

DIMENSIONS ARE IN MILLIMETERS										PART NO. F1181A1-TTT-11-50									
UNLESS OTHERWISE SPECIFIED TOLERANCES										APPROVED DATE 10-11-01'									
0.5-6 = ±0.2										CHECKED DATE 10-11-01'									
6-30 = ±0.4										DRAWN DATE 10-11-01'									
30-120 = ±0.6										FILE NO.									
120-315 = ±1																			
315-1000 = ±1.6																			
1000-2000 = ±2.4																			

**Amphenol**

TITLE F DIRECT SOLDER PLUG  
(FOR .085", .086" CABLE )

DRAWING NO. KJ-F1181A1-TTT-.085-50

ITEM NO.

5	INSULATOR	NOTE 4	NATURAL	1	SMA1182A2-5T-50
4	CONTACT PIN	NOTE 1	NONE 3	1	SA-003-09-4-1/06
3	INSULATOR	NOTE 4	NATURAL	1	F1181A1-3T-50
2	BODY	NOTE 1	NOTE 2	1	F1181A1-2-32/224
1	SHELL	NOTE 1	NOTE 2	1	SA-003-09-1-B
NO.	DESCRIPTION	MATERIAL	FINISH	Q'TY	DRAWING NO.