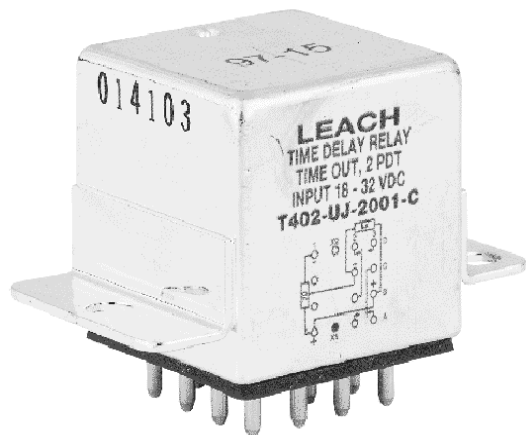


ENGINEERING DATA SHEET

T402

TIME DELAY RELAY
2 PDT, 2 AMP



APPLICABLE SOCKET:

[S400](#)
[SC40*](#)

Time delay relay on operate or on release

Fixed or adjustable timing delay

Contact arrangement **2 PDT**
Power supply **28 Vdc**

PRINCIPLE TECHNICAL CHARACTERISTICS

Contacts rated at **2 Amps / 28 Vdc**
Weight **< 60 grams**
Dimensions of case **44mm x 25.7mm x 26mm max**

Hermetically sealed, corrosion protected metal can.

CONTACT ELECTRICAL CHARACTERISTICS

Minimum operating cycles	Contact rating per pole and load type	Load Current in Amps	
		@28VdC	@115Vac/60-400Hz
100,000 cycles	resistive load	2	0.3
100,000 cycles	inductive load (L/R=5ms)	0.75	-
500,000 cycles	low level (30µA/30mV max)	-	-
100 cycles	Solid state output on C2 resistive overload	4	-

NUMBERING SYSTEM

	T402	-	A	E	-	1001	-	A
Basic series designation	_____							
1-Types Of Operation (A,B,D,F,U,W)	_____							
2-Temperature range and timing accuracy (E,L,J,K)	_____							
3-Timing range (4 digits)	_____							
4-Mounting style and terminal types (A,B,C,D)	_____							



Featuring **LEACH**® power and control solutions
www.esterline.com

AMERICAS
6900 Orangethorpe Ave.
P.O. Box 5032
Buena Park, CA 90622

Tel: (01) 714-736-7599
Fax: (01) 714-670-1145

EUROPE
2 Rue Goethe
57430 Sarralbe
France

Tel: (33) 3 87 97 31 01
Fax: (33) 3 87 97 96 86

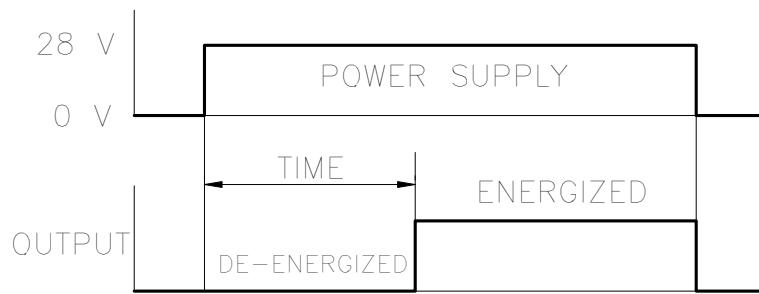
ASIA
Units 602-603 6/F Lakeside 1
No.8 Science Park West Avenue
Phase Two, Hong Kong Science Park
Pak Shek Kok, Tai Po, N.T.
Hong Kong

Tel: (852) 2 191 3830
Fax: (852) 2 389 5803

Data sheets are for initial product selection and comparison. Contact Esterline Power Systems prior to choosing a component.

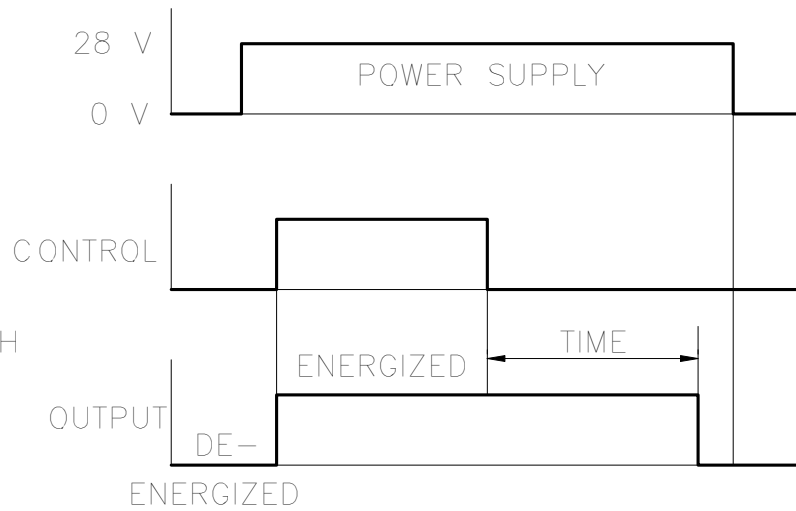
CODE A : TIME DELAY ON OPERATE,
FIXED TIME

CODE B : TIME DELAY ON OPERATE,
ADJUSTABLE WITH EXTERNAL RESISTOR



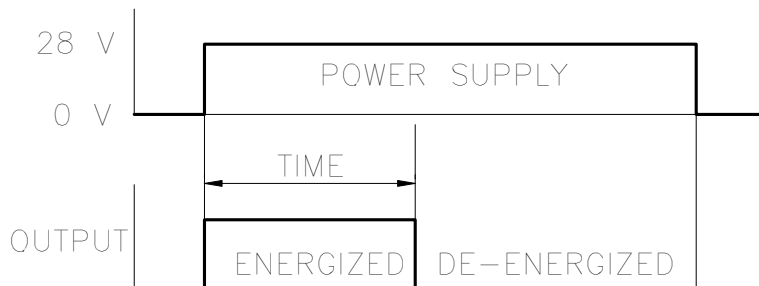
CODE D : TIME DELAY ON RELEASE,
POSITIVE CONTROL, FIXED TIME

CODE F : TIME DELAY ON RELEASE,
POSITIVE CONTROL, ADJUSTABLE WITH
EXTERNAL RESISTOR



CODE U : TIME DELAY ON RELEASE,
FIXED TIME

CODE W : TIME DELAY ON RELEASE,
ADJUSTABLE WITH EXTERNAL RESISTOR



TEMPERATURE RANGE AND TIMING ACCURACY

Code	Temperature	Accuracy	Limitations
E	-55° C to +85° C	±10%	±10 ms below 200 ms
L [4]	-55° C to +85° C	±5%	not below 500 ms
J	-55° C to +125° C	±10%	±10 ms below 200ms
K [4]	-55° C to +100° C	±5%	not below 500 ms

GENERAL CHARACTERISTICS**T402**

Operating Voltage	18 to 32 Vdc (AIR norm 2021 E)
Recycle Time	less than or equal to 50 ms
Dielectric strength at sea level	
- all pins connected together and can	1000 V / 50 Hz
- between open contacts	500 V / 50 Hz
Dielectric strength at altitude 25,000 m, all points	350 V / 50 Hz
Initial insulation resistance at 500 Vdc	greater than or equal to 1000 M Ω
Sinusoidal vibration	20G / 10 to 2000 Hz
Shock	100G / 6 ms
Power loss protection	0.5 ms max
Undamaged against positive transients	+ 80 Vdc
Spike susceptibility	\pm 600 Vdc
Self generated spikes	\pm 50 Vdc

NOTES

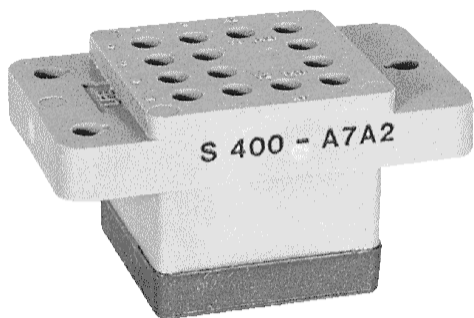
1. Relays with C mounting are compatible with socket families S 400, SF 400 ..
2. Isolation spacer pads for PCB mounting available on request.
3. For other mounting styles or terminal types, please contact the factory.
4. Codes L and K not available for adjustable timing.

ENGINEERING DATA SHEET

S400, S401, S402

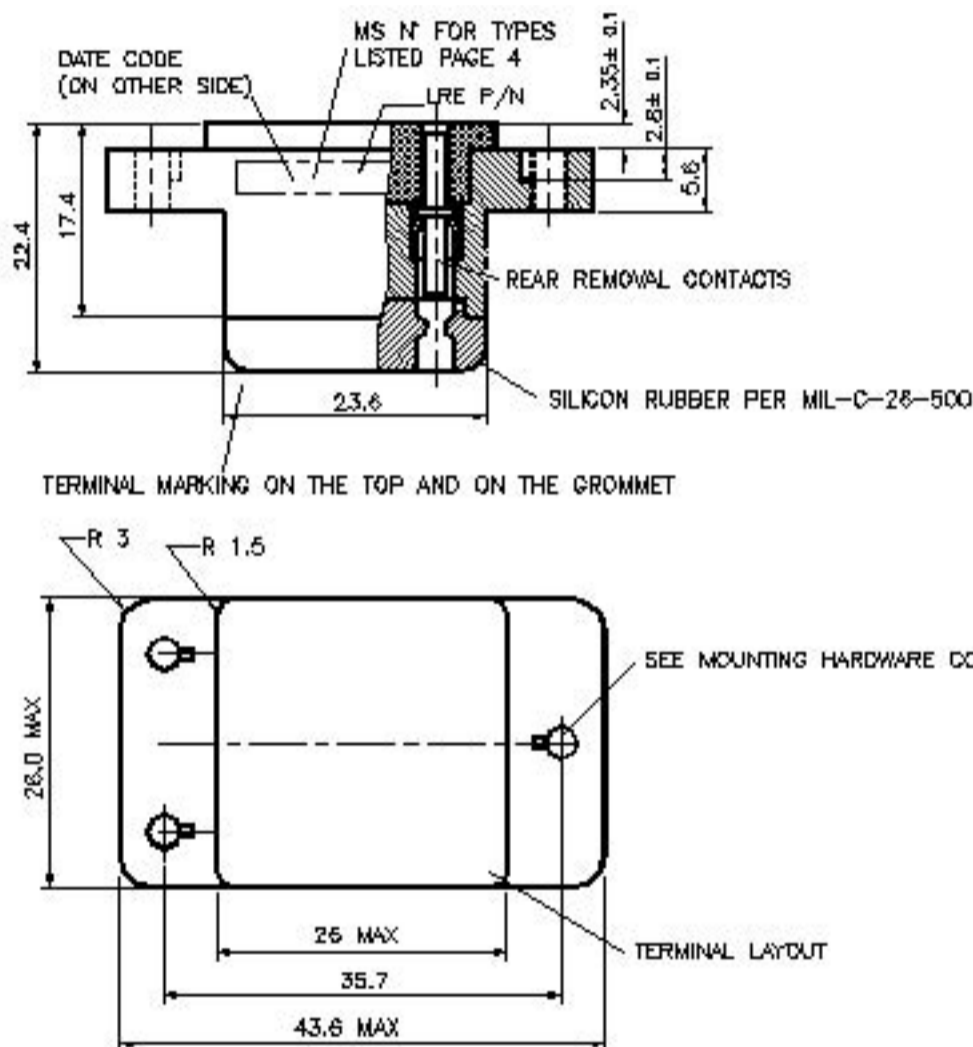
SOCKET FOR RELAYS

10 AMP



BASIC SOCKET SERIES DESIGNATION FOR:

**Series M400 (DC Coil), M401 (AC Coil),
M402 (DC Coil), FLS402, T402, T412, T441, VS400, CS400**



GENERAL CHARACTERISTICS

Crimp tool contact	M 22520/1-01 with turret M 22520/1-02 or MS 3191-1.
Insertion and extraction tool	NAS 1664-16.
Weight	35g max.
Temperature range	-70° C to +125° C.

This connection is designed to the standards and requirements of MIL-S-12883

Contacts and hardware to be delivered disassembled in a plastic bag.

Tolerances, unless otherwise specified, ±0.25mm.



Featuring **LEACH**® power and control solutions
www.esterline.com

AMERICAS
6900 Orangethorpe Ave.
P.O. Box 5032
Buena Park, CA 90622

Tel: (01) 714-736-7599
Fax: (01) 714-670-1145

EUROPE
2 Rue Goethe
57430 Sarralbe
France

Tel: (33) 3 87 97 31 01
Fax: (33) 3 87 97 96 86

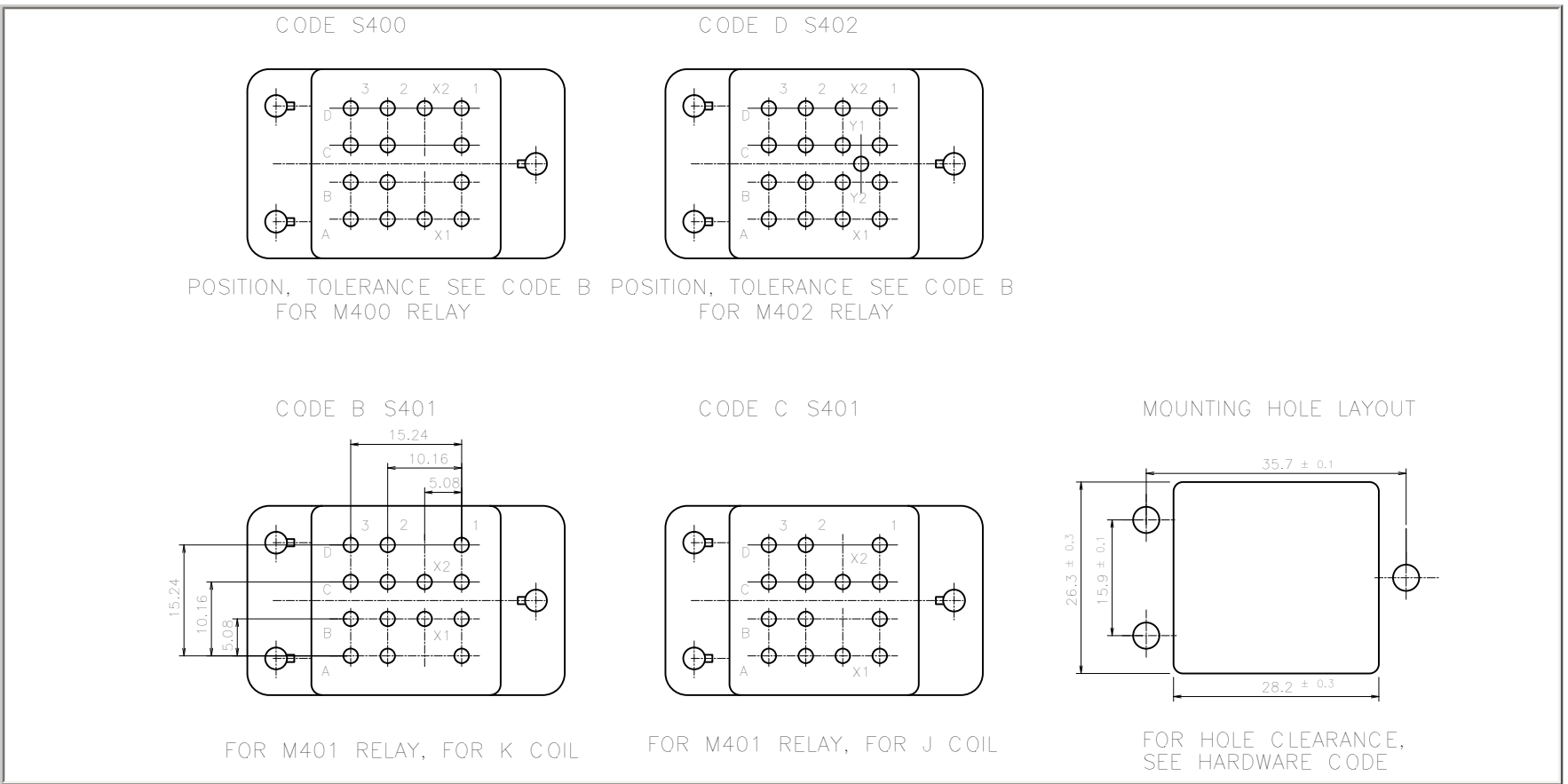
ASIA
Units 602-603 6/F Lakeside 1
No.8 Science Park West Avenue
Phase Two, Hong Kong Science Park
Pak Shek Kok, Tai Po, N.T.
Hong Kong

Tel: (852) 2 191 3830
Fax: (852) 2 389 5803

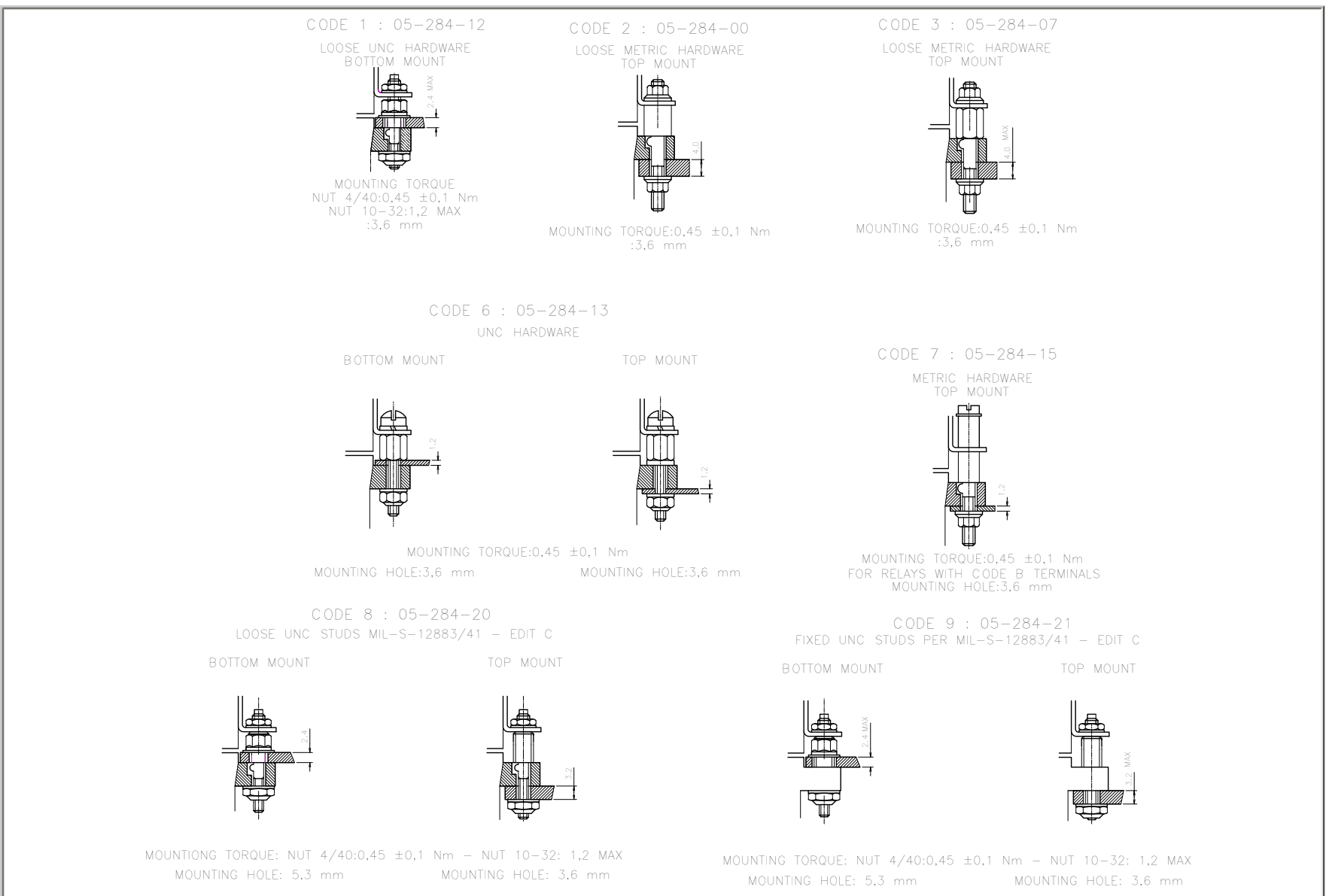
Data sheets are for initial product selection and comparison. Contact Esterline Power Systems prior to choosing a component.

TERMINAL LAYOUT

S400, S401, S402



MOUNTING HARDWARE



WIRE INSULATION DIAMETER FOR SEAL TO GROMMET

S400, S401, S402

<p>Code A</p> <p>Recommended for contact code 2 contact code 8 Diameter: 1.22.4mm</p>	<p>Code B</p> <p>Recommended for contact code 3 contact code 9 Diameter: 0.81.6mm</p>
---	---

CONTACT SIZE AND STYLE

	<p>Code 2 05 911 00</p> <p>Crimpend to accommodate AWG16-18-20</p> <p><u>Contact mating end #16</u></p>	<p>Code 3 05 911 10</p> <p>Crimpend to accommodate AWG20-22-24</p> <p><u>Contact mating end #16</u></p>
Code 0 Without contacts	<p>Code 8 30 315 00</p> <p>Crimpend to accommodate AWG16-18-20</p> <p>MIL-C-39029/92-533 Bin Code colour bands or Bin Code numbering on crimp side</p> <p><u>Contact mating end #16</u></p>	<p>Code 9 30 315 10</p> <p>Crimpend to accommodate AWG20-22-24</p> <p>MIL-C-39029/92-534 Bin Code colour bands or Bin Code numbering on crimp side</p> <p><u>Contact mating end #16</u></p>

SOCKET NUMBERING SYSTEM

	S400	A	1	A	2
1-Basic socket designation_____					
2-Terminal Layout_____					
3-Mounting Hardware_____					
4-Grommet to seal on wire insulation_____					
5-Contact size and style_____					

MS/LRE CROSS PART NO. AND MATING RELAYS



S400, S401, S402

	MS - Number	LEACH P/N	Contacts to accomodate wire #		Applicable for relays
MIL-S-12883/40	-01	S400-A6A2	16-18-20	Loose terminals Above/below panel mounting	M400-D4A /-L/-N/-B/-C
	-05	S400-A6B3	20-22-24		M 401-D4F/-K
	-02	S401-B6A2	16-18-20		N/A
	-03	N/A	N/A		M 401-D4E/-J
	-04	S401-C6A2	16-18-20		
	MS - Number	LEACH P/N	Contacts to accomodate wire #		Applicable for relays
MIL-S-12883/40B	-13	S400-A1A2	16-18-20	Loose terminals below panel mounting	M400-D4A /-L/-N/-B/-C
	-17	S400-A1B3	20-22-24		M 401-D4F/-K
	-14	S401-B1A2	16-18-20		M 401-D4E/-J
	-16	S401-C1A2	16-18-20		
	MS - Number	LEACH P/N	Contacts to accomodate wire #		Applicable for relays
MIL-S-12883/40C	-13S	S400-A8A8	16-18-20	Loose terminals Above/below panel mounting	M400-D4A /-L/-N/-B/-C
	-17S	S400-A8B9	20-22-24		M401-D4F/-K
	-14S	S401-B8A8	16-18-20		M401-D4E/-J
	to be determined	S401-C8A8	16-18-20		M402-D4A/ -L/-N/-B/-C
	-18S	S402-D8A8	16-18-20		
MIL-S-12883/40C	-19S	S400-A9A8	16-18-20	Fixed terminals Above/below panel mounting	M400-D4A /-L/-N/-B/-C
	-23S	S400-A9B9	20-22-24		M 401-D4F/-K
	-20S	S401-B9A8	16-18-20		M 401-D4E/-J
	to be determined	S401-C9A8	16-18-20		M 402-D4A/ -L/-N/-B/-C
	-24S	S402-D9A8	16-18-20		

ENGINEERING DATA SHEET

SC30*, SC40*


SOCKET FOR 2 OR 4 POLE
10 AMP

 <p>2 POLE</p>  <p>4 POLE</p>	<p>SNAP AND LOCK SOCKET SERIES DESIGNATION FOR:</p> <p>SERIES M300, M301, M302, M400, M401, M402, T402, T412</p> <p>DESIGNED TO THE STANDARDS AND REQUIREMENTS OF:</p> <table> <tr> <td>2-pole, 10A relays</td> <td>MIL-PRF-12883/41</td> </tr> <tr> <td>Mates with</td> <td>M83536, M83726 and MS27709</td> </tr> <tr> <td>4-pole, 10A relays</td> <td>MIL-PRF-12883/40</td> </tr> <tr> <td>Mates with</td> <td>M83536</td> </tr> </table> <p>FEATURES</p> <ul style="list-style-type: none"> Low profile Bottom panel mount Snaps into panel Other models available <p>MATERIALS</p> <table> <tr> <td>Socket body</td> <td>Polyetherimide per MIL-P-46184</td> </tr> <tr> <td>Grommet</td> <td>Silicone rubber per ZZ-R-765</td> </tr> <tr> <td>Hardware</td> <td>Stainless Steel</td> </tr> <tr> <td>Contacts</td> <td>Copper alloy, hard gold plated per MIL-G-45204</td> </tr> <tr> <td>Contact retainers</td> <td>Beryllium copper</td> </tr> </table>	2-pole, 10A relays	MIL-PRF-12883/41	Mates with	M83536, M83726 and MS27709	4-pole, 10A relays	MIL-PRF-12883/40	Mates with	M83536	Socket body	Polyetherimide per MIL-P-46184	Grommet	Silicone rubber per ZZ-R-765	Hardware	Stainless Steel	Contacts	Copper alloy, hard gold plated per MIL-G-45204	Contact retainers	Beryllium copper
	2-pole, 10A relays	MIL-PRF-12883/41																	
Mates with	M83536, M83726 and MS27709																		
4-pole, 10A relays	MIL-PRF-12883/40																		
Mates with	M83536																		
Socket body	Polyetherimide per MIL-P-46184																		
Grommet	Silicone rubber per ZZ-R-765																		
Hardware	Stainless Steel																		
Contacts	Copper alloy, hard gold plated per MIL-G-45204																		
Contact retainers	Beryllium copper																		

GENERAL CHARACTERISTICS

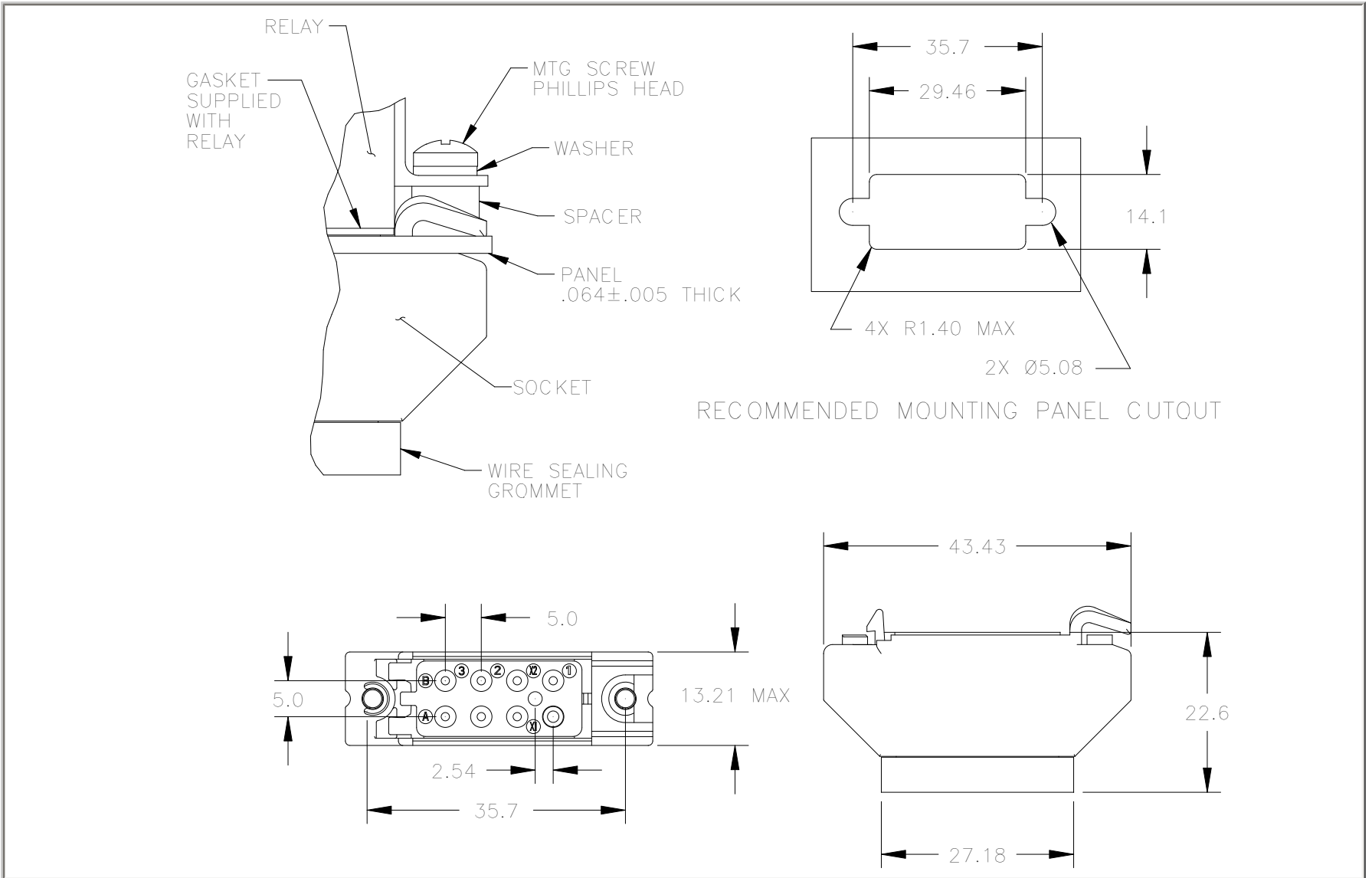
Insulation resistance	1000 M Ω min.
Dielectric withstanding voltage	1500 VRMS sea level; 500 VRMS at 25,000 m
Weight	15.3g max.
Temperature range	-65°C to +125°C
Vibration	MIL-STD-202, Method 204, Test Condition G
Shock	MIL-STD-202, Method 213, Test Condition C

This socket is designed to snap and lock into a panel to reduce hardware requirement and mounting time. Contacts and hardware are provided disassembled in a plastic bag. Standard tolerances are ± 0.025 mm unless otherwise noted.

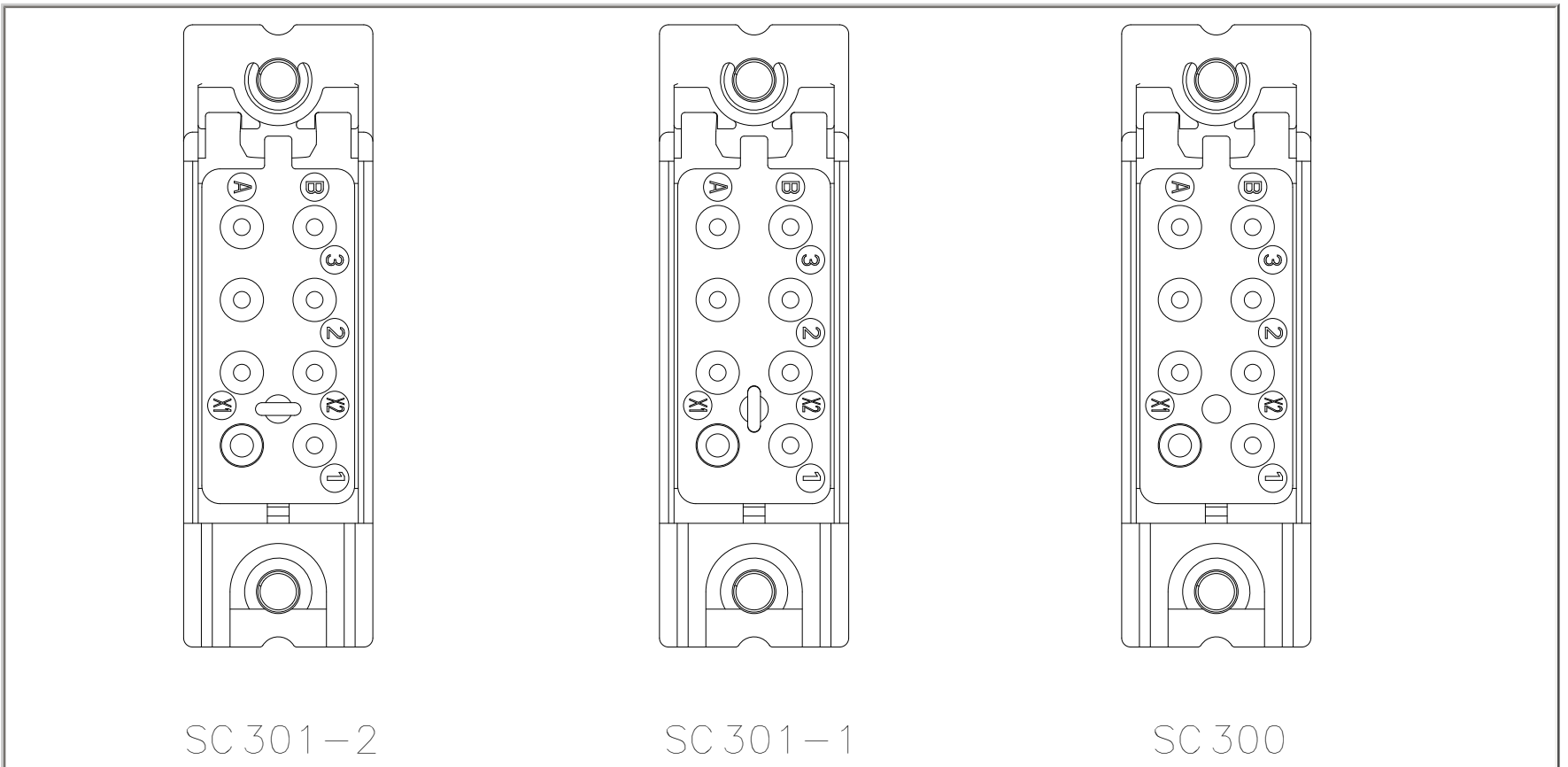
 <p>Featuring LEACH® power and control solutions www.esterline.com</p>	<p>AMERICAS 6900 Orangethorpe Ave. P.O. Box 5032 Buena Park, CA 90622</p> <p>Tel: (01) 714-736-7599 Fax: (01) 714-670-1145</p>	<p>EUROPE 2 Rue Goethe 57430 Sarralbe France</p> <p>Tel: (33) 3 87 97 31 01 Fax: (33) 3 87 97 96 86</p>	<p>ASIA Units 602-603 6/F Lakeside 1 No.8 Science Park West Avenue Phase Two, Hong Kong Science Park Pak Shek Kok, Tai Po, N.T. Hong Kong</p> <p>Tel: (852) 2 191 3830 Fax: (852) 2 389 5803</p>
	<p>Data sheets are for initial product selection and comparison. Contact Esterline Power Systems prior to choosing a component.</p>		

SOCKET DIMENSIONS

SC30* (2 POLE)

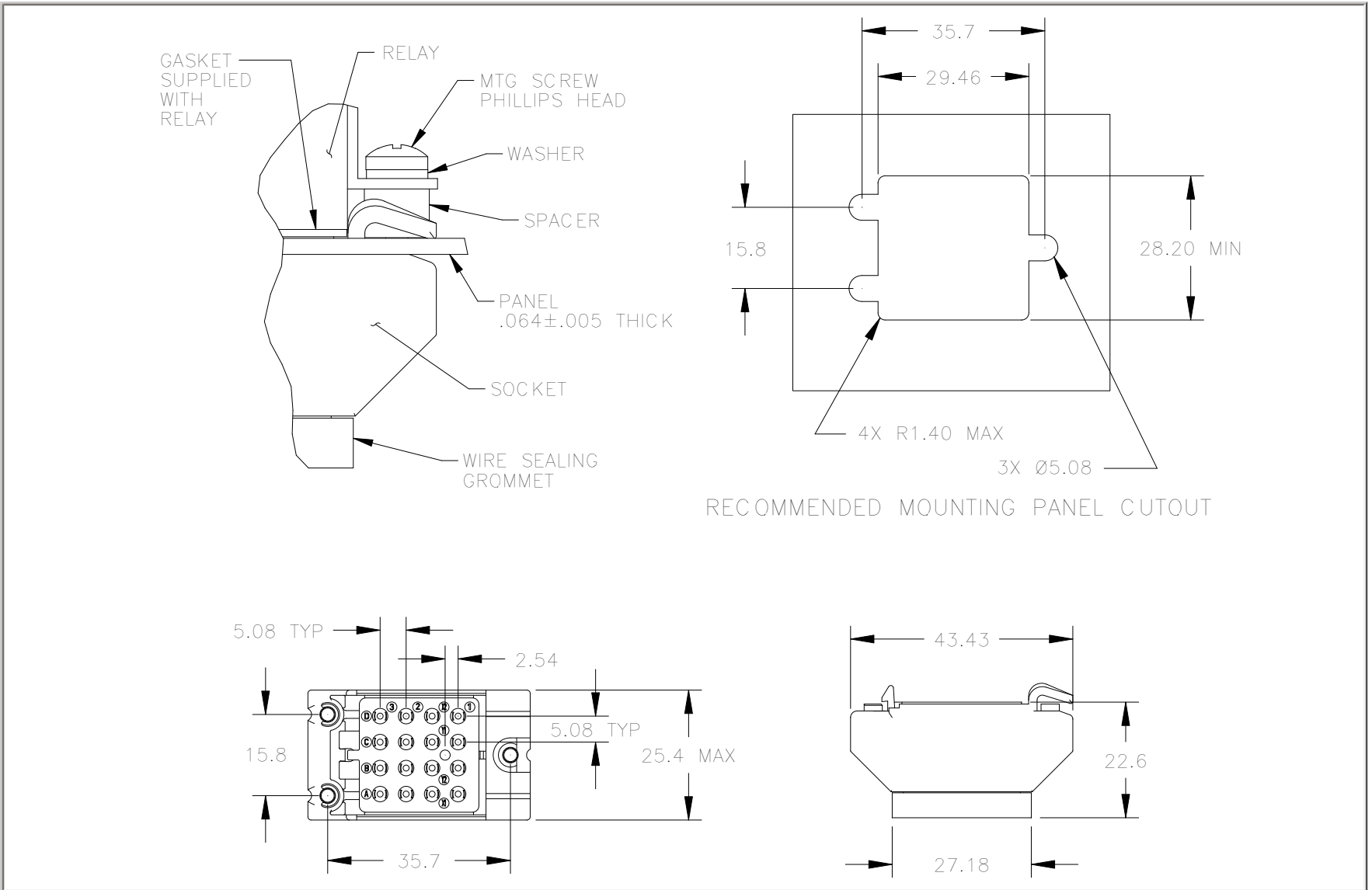


TERMINAL LAYOUT



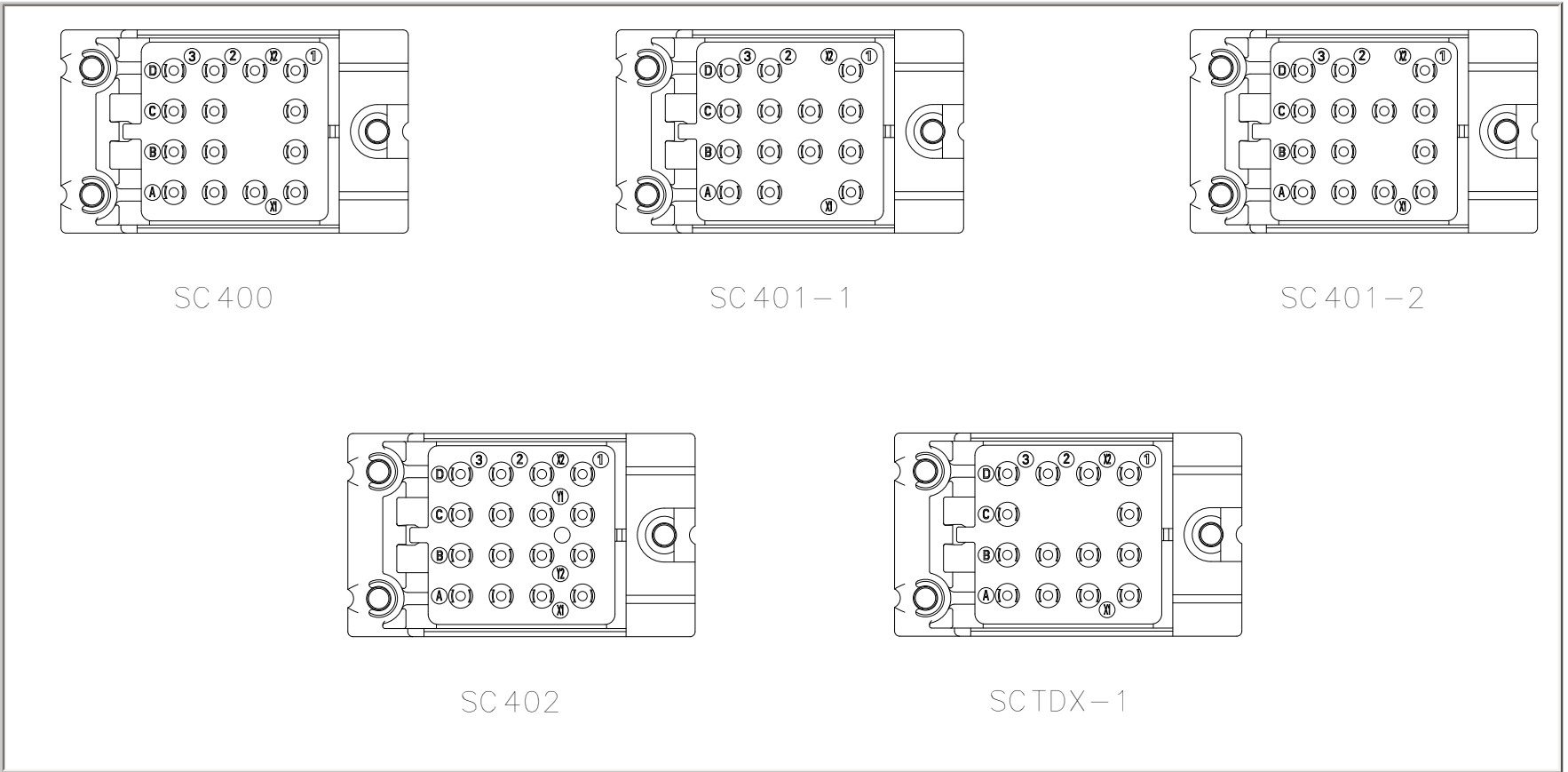
SOCKET DIMENSIONS

SC40* (4 POLE)



RECOMMENDED MOUNTING PANEL CUTOUT

TERMINAL LAYOUT



	SC	300	01
1-Basic socket snap lock designation_____			
2-Mating relay (M300, M301, M302, M400, M401_____)			
2-Hardware (0=less hardware, 1=with hardware)_____			
3-Contacts (0=less contacts, 1=with contacts)_____			