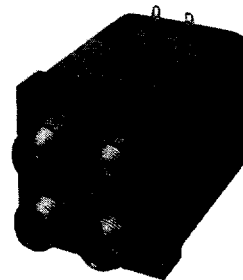


# Standard Transfer Coaxial Switches



RLC Electronics' Standard Transfer Switch line provides extremely high reliability, long life and outstanding electrical performance by utilizing high density packaging. The transfer electrical characteristics feature extremely low insertion loss and VSWR over the entire DC-12.4 GHz range while maintaining high isolation. The

switch is available in the following configurations — manual or remote, type N, SMA, BNC, or TNC connector, 12 Vdc, 28 Vdc or 115 Vac operation, with or without indicator terminals, failsafe or latching cutthroat. On remote latching units a manual override option allows the user to switch manually without power applied.

## Specifications

S<sup>1</sup>-T-2-3-4-5-6-7

Switch Type:	Transfer	
Frequency Range:	DC-12.4 GHz	
	DC-7 GHz	7-12.4 GHz
Insertion Loss: (max)	0.3 dB	0.6 dB
VSWR: (max)	1.30	1.6
Isolation: (min)	60 dB	55 dB

**Power Rating, RF, Cold Switching:** See page 2.

**Impedance:** 50 ohms.

**Operating Power 25°C:**

(Failsafe): 12 Vdc at 600 ma nom.

28 Vdc at 460 ma nom.

115 Vac at 50 ma nom.

(Latching): 12 Vdc at 750 ma nom. 28 Vdc at 310 ma nom. 115 Vac at 225 ma nom. Current applied 10 ms min.; cutthroat standard, recovery time 100 ms nom.

**Connectors, RF:** N, SMA, TNC, BNC\* Female.

**Connectors, Power:** Feed through solder lugs.

**Life:** 1,000,000 operations.

**Switching Time:** 20 milliseconds max.

**Weight:** 19 oz.

**Environmental Conditions:** MIL-S-3928.

**Operating Mode:** Manual, failsafe or latching.

**Switching Sequence:** Break before make.

\*BNC not recommended for use above 1 GHz.

### To designate the switch desired use:

- |  |   |
|--|---|
| (1) "M" for manual or "R" for Remote.                              | (4) "I" for indicators if desired.          |
| (2) "N", "R" for SMA, "T" for TNC, or "B" for BNC type connectors. | (5) "L" for latching cut throat if desired. |
| (3) "A" for 115 Vac, "H" for 12 Vdc, or "D" for 28 Vdc power.      | (6) "TL" for TTL Driver if desired.         |
|  | (7) "O" for Manual Override.                |

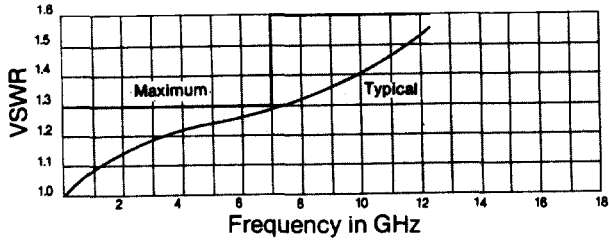
**Example:** SR-T-N-D-I-L is a remote type N, 28 Vdc, with indicators, latching cut throat switch.

Specials requiring closer tolerances, different frequency ranges, special connectors, different materials, finishes, etc., can be furnished upon request. Specifications subject to change without notice.

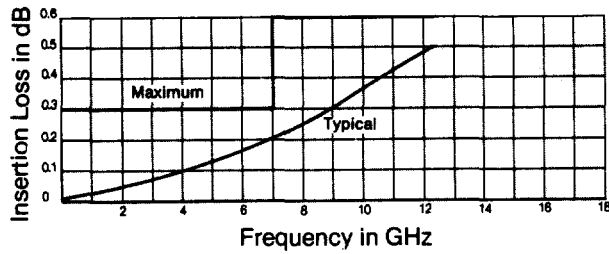


# Typical Operating Curves

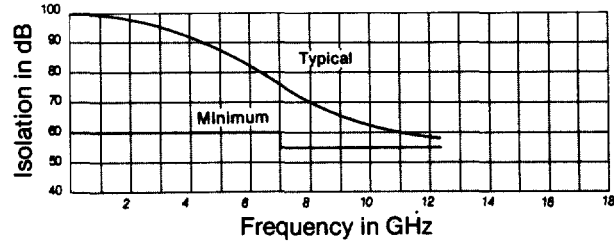
### VSWR Vs. Frequency



### Insertion Loss Vs. Frequency

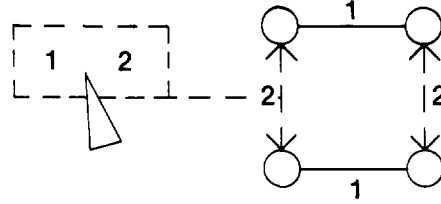


### Isolation Vs. Frequency

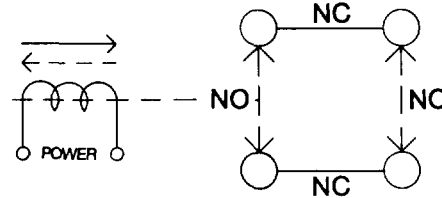


# Schematics

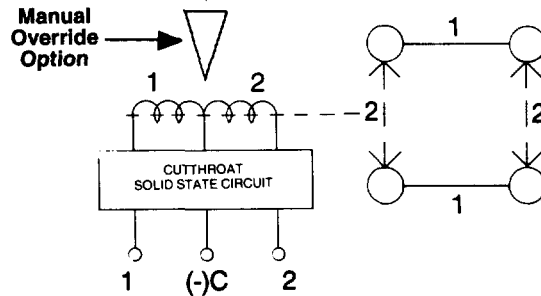
### Manual



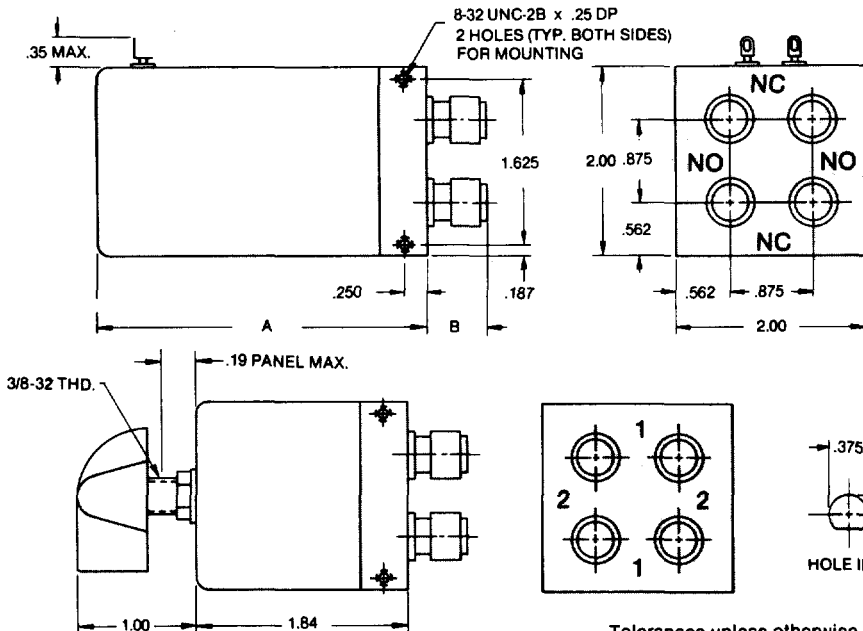
### Failsafe



### Latching



# Outlines



MODEL NO.	A
SRT * -D	2.75
SRT * -D-I	2.75
SRT * -D-I-TL	3.20
SRT * -D-L	2.75
SRT * -D-I-L	2.75
SRT * -D-I-L-TL	2.75
SRT * -A	3.00
SRT * -A-I	3.00
SRT * -A-L	3.50
SRT * -A-I-L	3.50
CONN	B
N	.52
BNC/TNC	.48
SMA	.44

Tolerances unless otherwise specified are: .xx, ± .02; .xxx, ± .005.

## RLC ELECTRONICS, INC.

83 Radio Circle, Mt. Kisco, NY 10549  
(914) 241-1334 • FAX: 914-241-1753

