

*Specifications subject to change.
For latest design specifications...
1-800-522-6752*

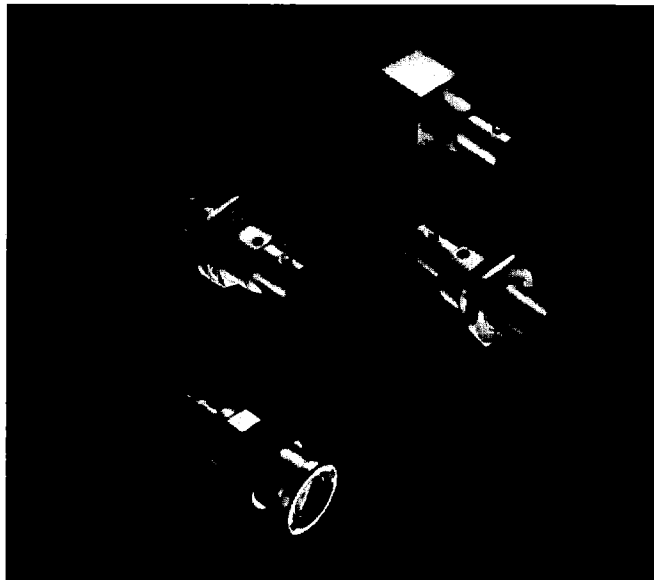
Dimensioning:
Dimensions are in inches and millimeters.
Values in brackets are metric equivalents.

Product Facts

- Crimp connectors require only one-stroke crimping of both conductors, plus braid and cable support
- Lower installed cost with one-stroke crimp
- Reduced noise levels because of AMP's solderless crimping techniques
- Captive inner contact stability
- No danger of heat damage to coaxial cable
- Ease of inspection

Related Product Data:

- Connector Selection** - Pages 4004-4006
- Theory and Application** - Pages 4007-4013
- Cable-to-Connector Selection Guide** - Pages 4014 & 4015
- Connector Selection Guide** - Page 4016
- Tooling** - Pages 4157-4159
- Appendix** - Pages 4160-4162
- Technical Documents** - Page 4163
- Packaging** - All connectors are packaged individually unless otherwise noted.



The Twin BNC Connector is a quick connect/disconnect, weatherproof connector designed in accordance with MIL-C-39012 to meet the stringent requirements of MIL-STD-1553 Multiplex Data Bus.

These twin coaxial cable connectors are a unique development by AMP which has resulted in the production of high level RF components. Termination of these

connectors to twin conductor cable is made with AMP's exclusive one crimp method which simultaneously terminates inner conductors, outer braid and cable support with one stroke of the matching AMP tool.

These rugged connectors accommodate today's most commonly used twin conductor cable sizes.

Table of Contents

Plugs.....	4119
Bulkhead Jack	4119
Right-Angle Pc Board/Panel Mount Jacks	4120
Vertical Pc Board/Panel Mount Jacks	4120
Bulkhead Jack Adapter	4121
Tee Adapter.....	4121

Electrical Characteristics

- Nominal Impedance:** Non-constant
Working Voltage: 500 volts rms sea level
- Insulation Resistance:**
5000 megohms min.
Dielectric Withstanding Voltage:
1500 volts rms sea level

Mechanical Characteristics

- Mating/Unmating:**
Bayonet lock-quick connect/disconnect
- Cable Attachment:**
Crimp type - Simultaneous center and braid
- Coupling Nut Retention:**
100 lbs. [444 N] min.
- Cable Retention:**
25 lbs. [111 N] min., RG-108A/U cable
- Durability:** 200 cycles per MIL-C-39012

Environmental Characteristics

- Temperature Range:** -55°C to +85°C
- Vibration:** MIL-STD-202, Method 204, Condition B
- Shock:** MIL-STD-202, Method 213, Condition I, 100 G's
- Salt Spray:** MIL-STD-202, Method 101, Condition B
- Temperature Cycling:** MIL-STD-202, Method 102, Condition C

Materials

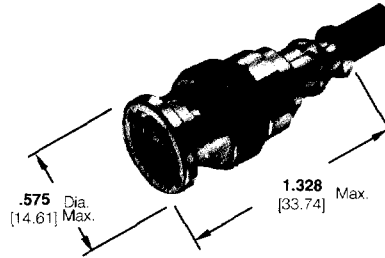
- Brass:** QQ-B-626
- Beryllium Copper:** QQ-C-530
- TEFLON:** MIL-P-19468
- Polypropylene:** General purpose
- Copper, Annealed:** QQ-C-576
- Phosphor Bronze:** QQ-B-750
- Silicone Rubber:** ZZ-R-765
- Plating:**
Silver - QQ-S-365
Nickel - QQ-N-290
Tin Lead - ASTM-B-545

Twin BNC Connectors

**Specifications subject to change.
For latest design specifications...
1-800-522-6752**

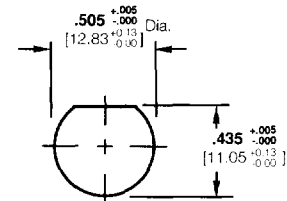
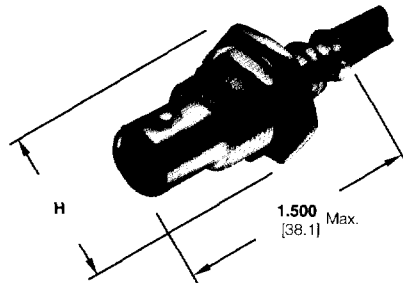
Dimensioning:
Dimensions are in inches and millimeters.
Values in brackets are metric equivalents.

Plugs



RG/U Cable	Center Contact Plating	Body Plating	Dielectric	Part No.	Integral Die Hand Tool
108, 108A	Silver	Silver	TEFLON	332225	69667
	Silver	Nickel	Polypropylene	332225-5	69667
Trompeter TWC-124-2	Silver	Silver	TEFLON	332225-3	69667
ROLM 49D2401 Raychem 7824D0130	Silver	Nickel	Polypropylene	332225-6	69667

Bulkhead Jack



Maximum Panel Thickness - .125 [3.18]

Recommended Panel Cutout

H = .687 [17.45] Max. across flats, .800 [20.32] Max. across points

RG/U Cable	Center Contact Plating	Body Plating	Dielectric	Part No.	Integral Die Hand Tool	Die Insert for Tools: Hand Tool - 69710-1 Pneu. - 69365,
108, 108A	Silver	Nickel	Polypropylene	332342	69667	69708

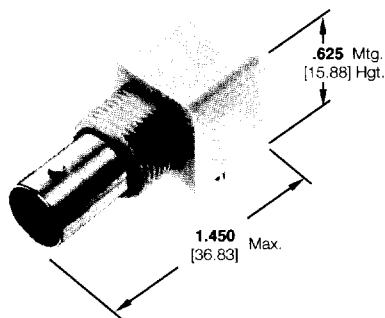
Twin BNC Connectors

*Specifications subject to change.
For latest design specifications...
1-800-522-6752*

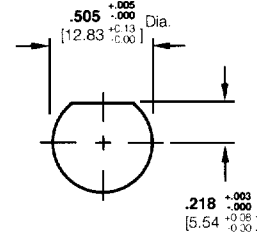
Dimensioning:
Dimensions are in inches and millimeters.
Values in brackets are metric equivalents.

**Right-Angle
Pc Board/
Panel Mount Jacks**

Body Material: VALOX

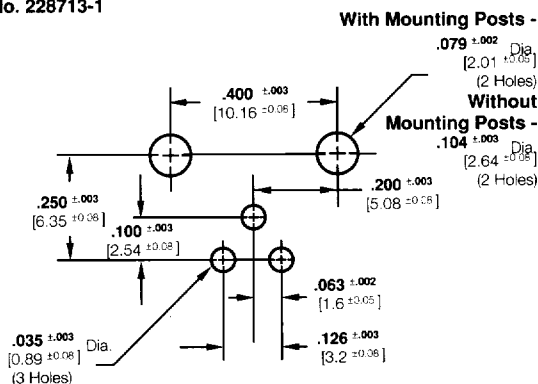


Body Color - White
With Mounting Posts
Part No. 228686-1
Without Mounting Posts
Part No. 228713-1

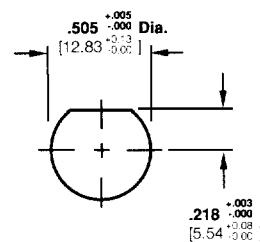


Maximum Panel Thickness - .240 [6.1]

Recommended Panel Cutout

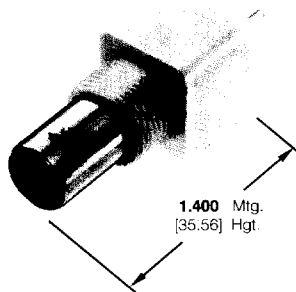


Recommended Pc Board Layout



Maximum Panel Thickness - .240 [6.1]

Recommended Panel Cutout



Body Color - White
With Mounting Posts
Part No. 221198-1
Without Mounting Posts
Part No. 228697-2

**Vertical
Pc Board/
Panel Mount Jacks**

Body Material: VALOX

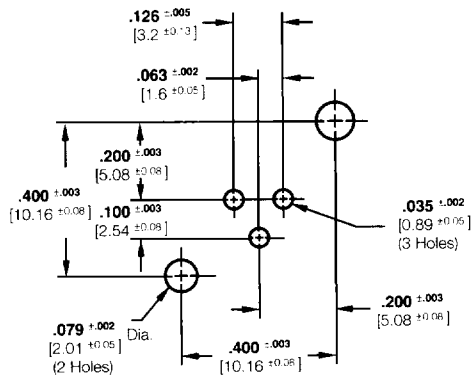
Lockwasher

Jam Nut



Part No.
1-329632-2

Part No.
1-329631-2



Recommended Pc Board Layout

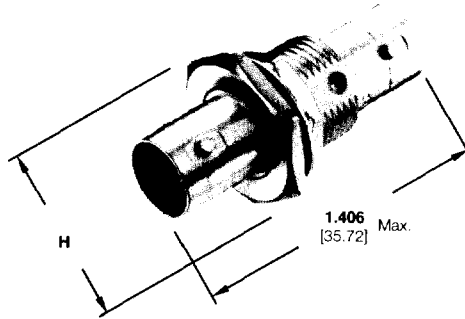
Twin BNC Connectors

*Specifications subject to change.
For latest design specifications...
1-800-522-6752*

Dimensioning:
Dimensions are in inches and millimeters.
Values in brackets are metric equivalents.

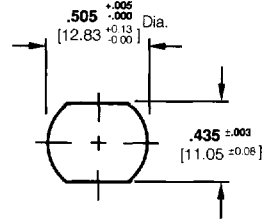
Bulkhead Jack Adapter

Plating:
Center Contact - Silver
Body - Nickel



H = .687 [17.45] Max. across flats, .800 [20.32] Max. across points

Part No. 332215

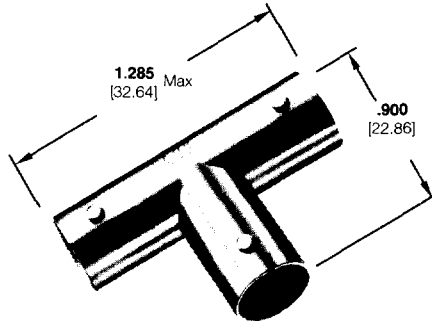


Maximum Panel Thickness - .125 [3.18]

Recommended Panel Cutout

**Tee Adapter
(Jack-Jack-Jack)**

Plating:
Center Contact - Gold
Body - Nickel



Part No. 228833-1