

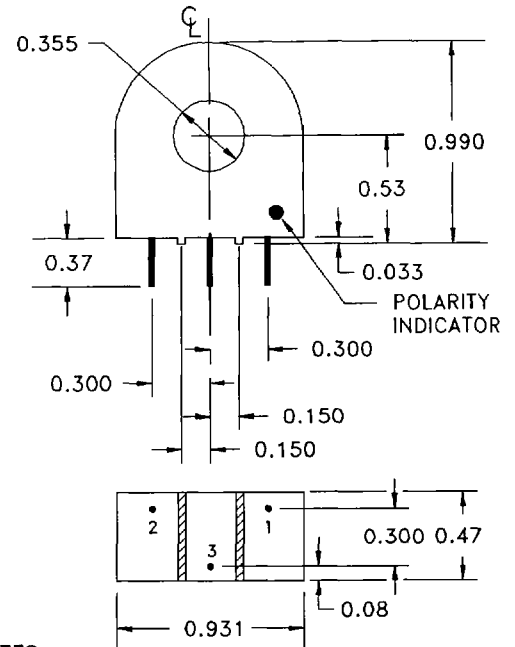


20A CURRENT TRANSFORMER, P/N 5304

| ELECTRICAL SPECIFICATIONS | |
|---|--------------------|
| PRIMARY CURRENT: | 20A NOM., 60A MAX. |
| TURNS RATIO: | 1000:1 NOMINAL |
| VOLT PER AMP RATIO AT 20A, FOR 100 OHM LOAD : | 0.100 V/A |
| VOLT PER AMP RATIO AT 2A, FOR 100 OHM LOAD : | 0.097 V/A |
| D.C.RESISTANCE AT 20°C : | 39 OHMS |
| DIELECTRIC WITHSTANDING VOLTAGE (HI-POT): | 4kV RMS. |

| MECHANICAL SPECIFICATIONS | |
|---------------------------|--|
| PARAMETER | |
| CUP | DAP, EPOXY OR RYNITE |
| ENCAPSULANT | EPOXY OR POLYURETHANE, LOW SHRINKAGE, HIGH RELIABILITY |
| FLAMMIBILITY | CONFORMS TO UL94-V0 |
| TERMINALS | PC PINS, 0.031IN RD. OR 0.025IN SQ. |
| MARKING | AMECON, PART NUMBER, DATECODE, DOT AT START PIN. |
| APPROX. WEIGHT | 0.034# |
| TOLERANCES: | .X: ±0.1 .XX: ±0.03 .XXX: ±0.01 |

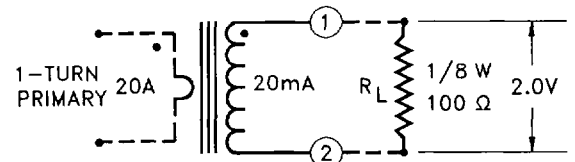
| ENVIRONMENTAL SPECIFICATION | |
|-----------------------------|---------------------------------|
| STORAGE TEMP. | -55°C < T _c < +130°C |
| INSULATION RESISTANCE | 100 MEGOHMS MINIMUM. |



NOTES:

UNLESS REQUESTED, THE TERMINATING RESISTOR AND THE ONE-TURN PRIMARY ARE NOT SUPPLIED

PIN 3: NORMALLY FOR MECHANICAL SUPPORT; MAY BE USED FOR CENTER-TAPPED DESIGNS.



OUTPUT VOLTS VS. INPUT AMPS FOR VARIOUS OHMIC LOADS

