

Surface Mount TCXO

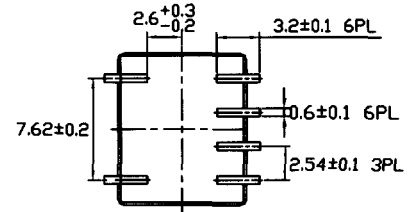
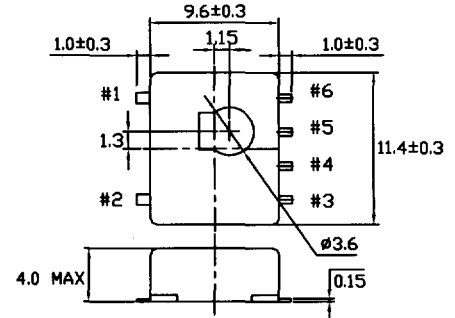
Series **CTX6**

- 4.0 mm Max height
- Optional power supply choices
- Exceptional product for communications and portable transmission equipment

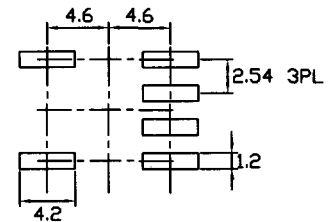
Specifications:

Frequency Range:	12.000 ~ 19.680 MHz	
Stability	Vs. Temperature:	$\pm 2.5$ ppm $-30^{\circ}\text{C} \sim +75^{\circ}\text{C}$
	Aging:	$\pm 1.0$ /Year (25°C)
	Vs. Supply Voltage:	$\pm 0.3$ ppm (+5.0V $\pm$ 5%)
Power Supply Voltage:	5.0V $\pm$ 5% See table below.	
Input Current:	2 mA Max (No Load)	
Storage Temperature:	$-40^{\circ}\text{C} \sim +85^{\circ}\text{C}$	
Output Voltage:	1.0 V <sub>P-P</sub> Min	
Load:	10,000Ω // 15 pF	
Frequency Trimming Range:	$\pm 3.0$ ppm Min	

**CTX6**



RECOMMENDED SOLDER PAD LAYOUT



Pin Configurations	
1	GND
2	GND
3	Output
4	GND
5	NC
6	Vcc

Power Supply Voltage	
A	5.0 V
B	4.0 V
C	3.7 V
D	3.3 V
E	3.0 V