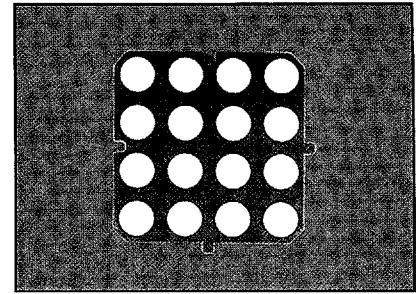
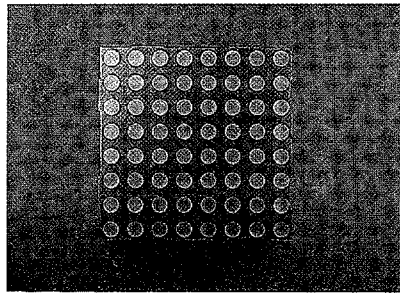


APPLICATIONS

- Instrument Panels
- Test Equipment
- Information Displays

OPTIONS AVAILABLE

- Right Angle Pins (Tooling Applied)
- Bicolor Red/Green
- Face & Segment Colors
- Graded Groups for Color/Intensity (See Page 5)



PRODUCT SELECTION

2.4" (3x3) Dot Matrix Displays						
Lumex Part Nbr	λ_p (nm)	$I_v \mu Cd$ @10mA(TYP)	Color	Comm Pin	Face Seg	Fig Nbr
LDM-20488MI	625	3500	RED	(+)	Grey White	41
LDM-20488NI	625	3500	RED	(-)	Grey White	41
LDM-20688MI	660	8000	SUP-RED	(+)	Grey White	41
LDM-20688NI	660	8000	SUP-RED	(-)	Grey White	41
LDM-20288MI	565	3000	GREEN	(+)	Grey White	41
LDM-20288NI	565	3000	GREEN	(-)	Grey White	41

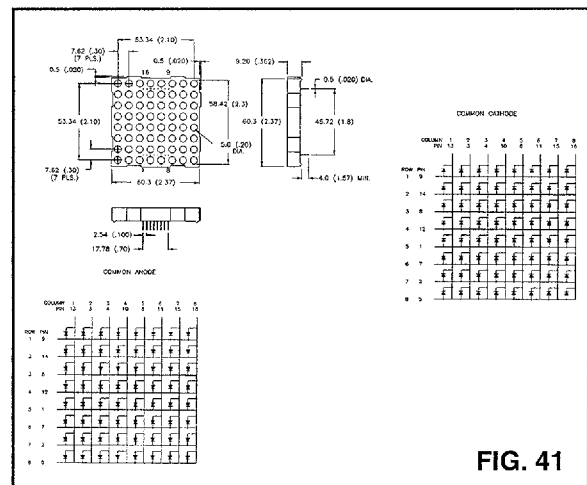


FIG. 41

PRODUCT SELECTION

4.5" (4x4) Bicolor Dot Matrix Displays						
Lumex Part Nbr	λ_p (nm)	$I_v \mu Cd$ @10mA(TYP)	Color	Comm Pin	Face Seg	Fig Nbr
LDM-204244MI	625	3500	RED	(+)	Grey White	42
LDM-204244NI	625	3500	RED	(-)	Grey White	42
LDM-20244MI	656	3000	GREEN	(+)	Grey White	42
LDM-20244NI	656	3000	GREEN	(-)	Grey White	42

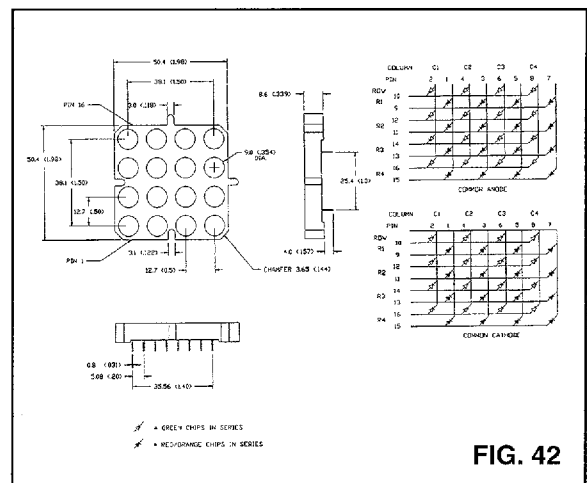


FIG. 42