

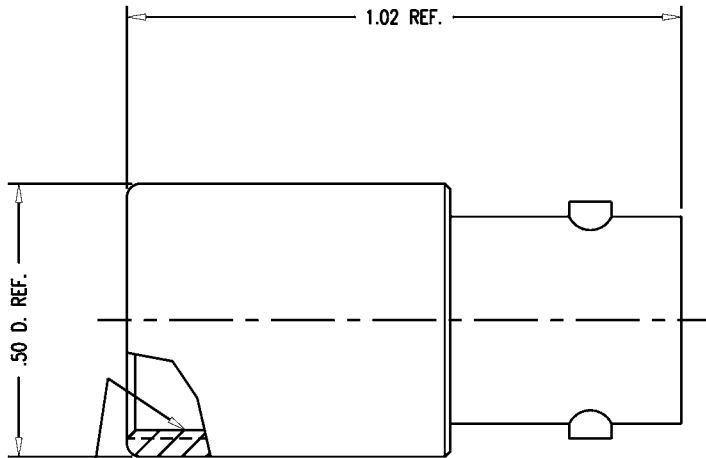
DASH NO.	M CODE	MADE FROM
----------	--------	-----------

# GSD

KC-89-193-M06

REVISIONS

ISSUE	CHANGES
3	CN 36903 C REDRAWN KH 05/06/96



7/16-28 UNEF-2B TH'D  
.156 MIN. FULL TH'D

NOTES:

- MARK PACKAGE: KINGS KC-89-193-M06.
- INTERFACE PER MIL-STD-348, FIG. 301-2.
- MATERIALS:  
CENTER CONTACT: BER. COPPER, ASTM-B-196  
INSULATORS: TEFLON, ASTM-D-4894  
ALL OTHER METAL PARTS: BRASS, ASTM-B16
- FINISHES:  
CENTER CONTACTS: GOLD PLATE PER MIL-G-45204  
ALL OTHER METAL PARTS: KINGS TARNISH RESISTANT NICKEL FINISH (TR-5)
- ELECTRICAL CHARACTERISTICS:  
FREQUENCY RANGE: DC TO 4 GHz.  
WORKING VOLTAGE: 500 VRMS  
NOMINAL IMPEDANCE: 50 OHMS

KAM6598

SCALE 4:1

APPROX SURFACE AREA

USED ON

REF: POMONA 026-001-053 REV. E

BODY ASSY, BNC, F

DRAWN KH DATE 05/06/96

DESIGN LI DATE 05/07/96

APPR. DATE

**KINGS**  
ELECTRONICS CO., INC.  
TUCKAHOE, NEW YORK 10707

# GSD

KC-89-193-M06