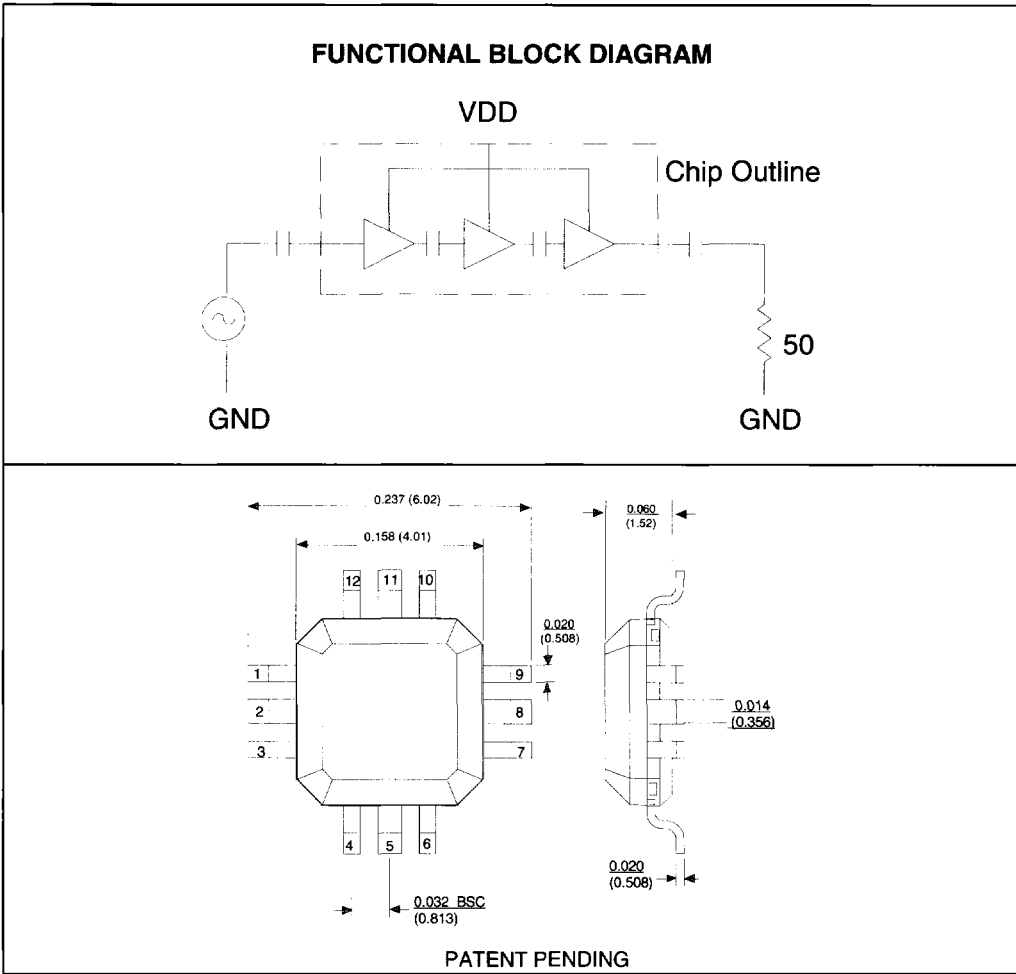


FEATURES	APPLICATIONS
Single +5 V Supply 50 Mb/s - 622 Mb/s Operation 25 dB Small Signal Gain 50 Ω Output Impedance Low Pulse Width Distortion Limited Output Swing	<ul style="list-style-type: none"> • Sonet OC - 12 • Fiber Optic Data Links • Clock and Data Amplifier

Electrical Specifications: $T_A = 25^\circ\text{C}$, $V_{DD} = 5V \pm 10\%$, $Z_o = 50\Omega$

DC CHARACTERISTICS	MIN	TYP	MAX	UNIT
3 dB Bandwidth	600			MHz
Small Signal Gain		25		dB
Data Input Voltage (V_{in} , p-p)	30		1000	mV
Data Output Voltage (V_{out} , p-p)		500		mV
Rise Time/Fall Time (20% - 80%)		150	200	psec
Input Return Loss		- 10		dB
Output Return Loss		- 10		dB
Isolation		- 40		dB
Gain Flatness		± 1		dB
Supply Current		30		mA
Power Dissipation		0.150		Watts
Operating Voltage Range	4.5	5.0	5.5	Volts
Operating Temp Range	0		85	$^\circ\text{C}$
Noise Figure		9		dB



PIN #	FUNCTION
1	GROUND
2	GROUND
3	RF IN
4	GROUND
5	GROUND
6	GROUND
7	RF OUT
8	GROUND
9	GROUND
10	VDD
11	GROUND
12	GROUND