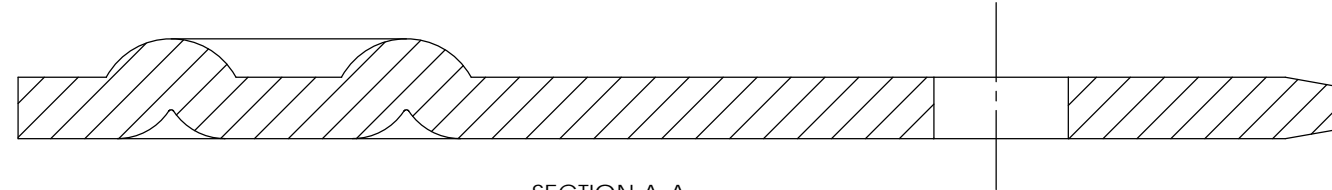


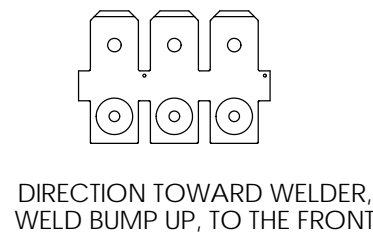
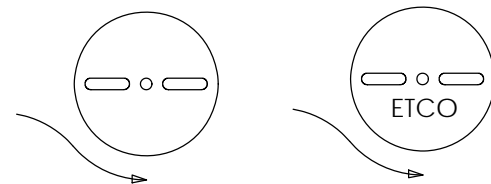
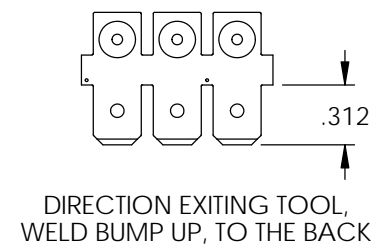
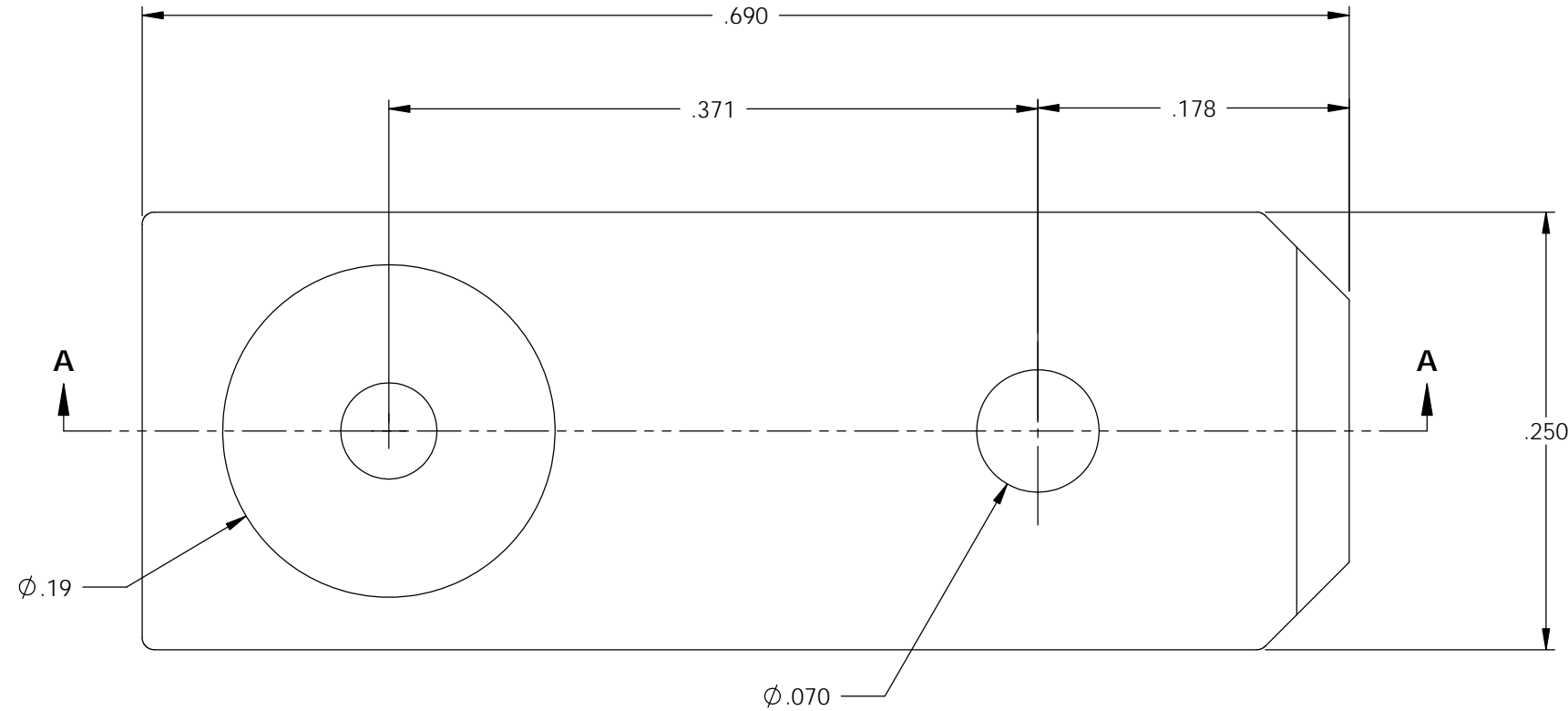
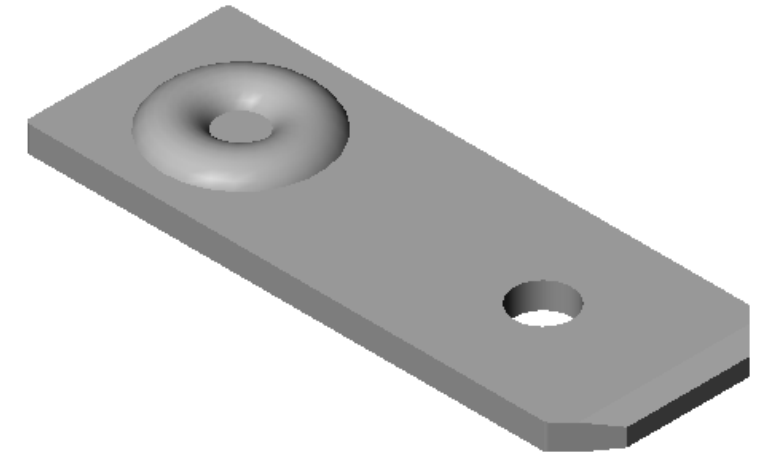
NOTE:  
 1.) MAT'L: .032 THK., PRE-NICKEL PLATED STEEL,  
 #2 TEMPER (HALF HARD),  
 PER ETCO METAL CODE NO. 03314.

P/C	DESCRIPTION	MAT'L
07902	M5W-NPS	NOTE 1

Rev.	Description of Change/ SCN#	Date
1	REDRAWN ON SOLIDWORKS NO CHANGES SCJ	7-31-08
2	ECR# 3800 SCJ	7/09/15



SECTION A-A  
 SCALE 10 : 1



# UNCONTROLLED COPY

<p>THIRD ANGLE PROJECTION          TOLERANCES UNLESS OTHERWISE SPECIFIED          INCHES: .XX - ±.030          .XXX - ±.015          ANGLES: ±5°</p>	TOOL NO. <b>0967</b> (2)	Title: <b>.032 X .250 WELDING MALE TAB</b>	
		DO NOT SCALE DWG.	Drawn By: S.JOHNSON
ETCO Incorporated Engineered Products 25 Bellows Street Warwick, RI 02888 Phone: (401) 467-2400 Fax: (401) 467-9230 www.ETCO.com		Chk'd/App'd By:	Scale: 10X Size: B
		Dwg. No.: <b>M5W cust</b>	