

MN6576H

Low Power 9-Bit CMOS A/D Converter for Image Processing

■ Overview

The MN6576H is a high-speed 9-bit CMOS analog-to-digital converter for image processing applications.

It uses a half flash structure based on chopper comparators and achieves both high speed and low power consumption with multiplexing.

It provides separate power supply pins for the circuits driving the low-voltage digital output pins.

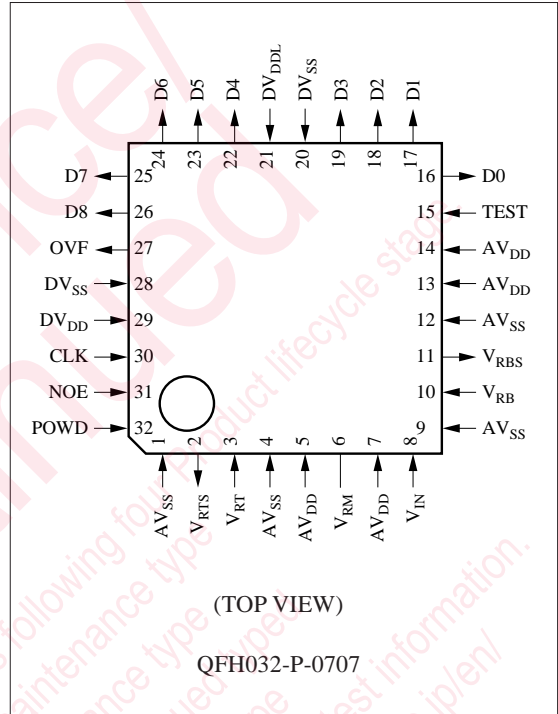
■ Features

- Maximum conversion rate: 16 MSPS (min.)
- Linearity error: ± 2.5 LSB (typ.)
- Differential linearity error: ± 0.6 LSB (typ.)
- Power supply voltage: 5.0 V or 3.3 V
- Power consumption: 120 mW (typ.) ($f_{CLK}=16$ MHz)

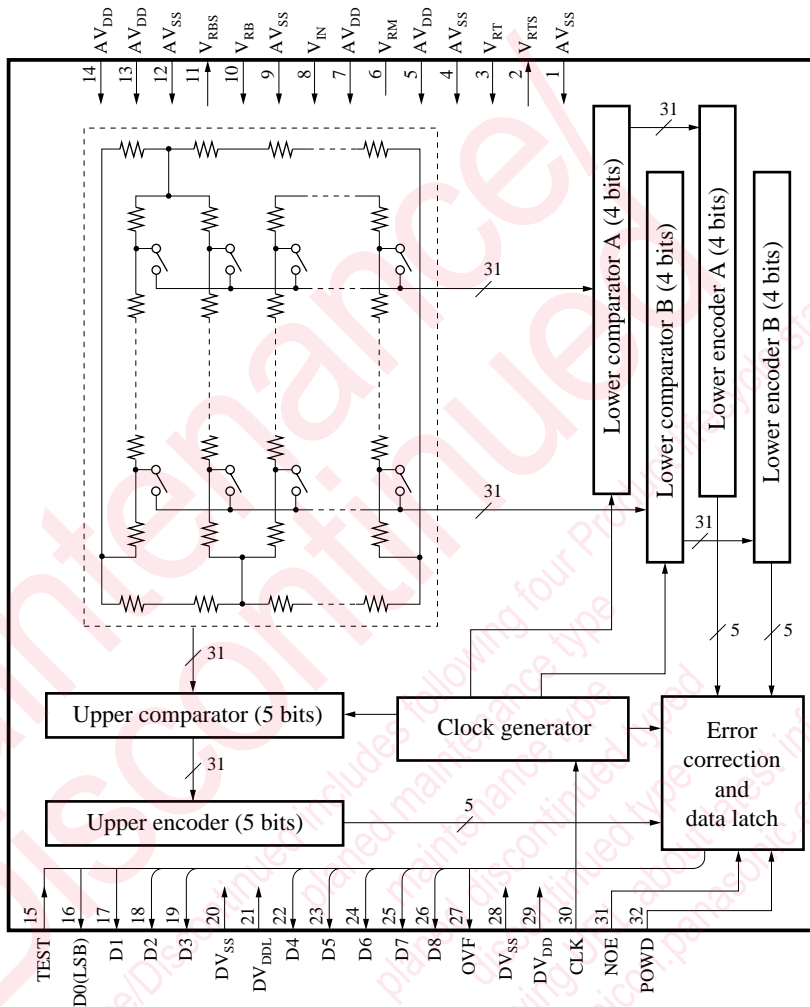
■ Applications

- Digital television receivers
- Digital video equipment
- Digital image processing equipment

■ Pin Assignment



■ Block Diagram



■ Pin Descriptions

Pin No.	Symbol	Function Description
1	AV _{SS}	Ground for analog circuits
2	V _{RTS}	Reference voltage power supply (TOP)
3	V _{RT}	Reference voltage input (TOP)
4	AV _{SS}	Ground for analog circuits
5	AV _{DD}	Power supply for analog circuits
6	V _{RM}	Intermediate reference voltage
7	AV _{DD}	Power supply for analog circuits
8	V _{IN}	Analog signal input
9	AV _{SS}	Ground for analog circuits
10	V _{RB}	Reference voltage power supply (BOTTOM)
11	V _{RBS}	Reference voltage input (BOTTOM)
12	AV _{SS}	Ground for analog circuits
13	AV _{DD}	Power supply for analog circuits
14	AV _{DD}	Power supply for analog circuits
15	TEST	Test mode selection
16	D0	Digital code output (LSB)
17	D1	Digital code output
18	D2	Digital code output
19	D3	Digital code output
20	DV _{SS}	Ground for digital circuits
21	DV _{DDL}	Power supply for low-voltage digital outputs
22	D4	Digital code output
23	D5	Digital code output
24	D6	Digital code output
25	D7	Digital code output
26	D8	Digital code output (MSB)
27	OVF	Overflow output
28	DV _{SS}	Ground for digital circuits
29	DV _{DD}	Power supply for digital circuits
30	CLK	Sampling clock
31	NOE	Output enable
32	POWD	Power down mode selection

■ Absolute Maximum Ratings $T_a=25^\circ\text{C}$

Parameter	Symbol	Rating	Unit
Power supply voltage	V_{DD}	-0.3 to +7.0	V
Power supply voltage for digital output circuits	DV_{DDL}	-0.3 to $V_{DD}+0.3$	V
Input voltage	V_I	-0.3 to $V_{DD}+0.3$	V
Output voltage	V_O	-0.3 to $V_{DD}+0.3$	V
Operating ambient temperature	T_{opr}	-20 to +70	$^\circ\text{C}$
Storage temperature	T_{stg}	-55 to +125	$^\circ\text{C}$

■ Recommended Operating Conditions $V_{DD}=AV_{DD}=DV_{DD}=4.5\text{V}$, $DV_{DDL}=3.0\text{V}$, $V_{SS}=AV_{SS}=DV_{SS}=0\text{V}$, $T_a=25^\circ\text{C}$

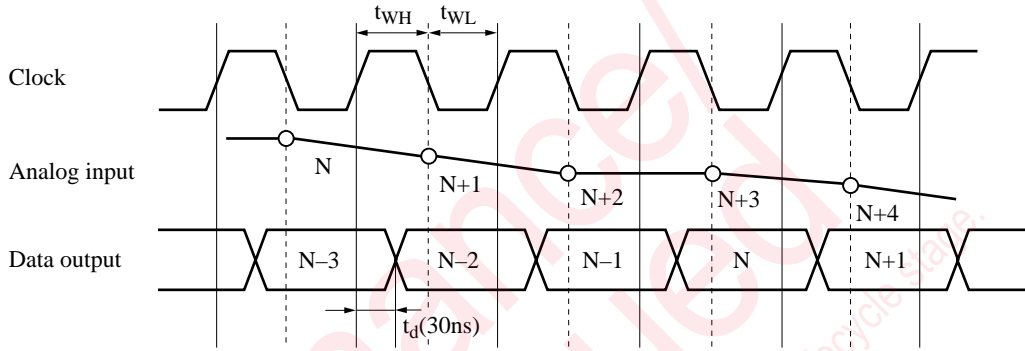
Parameter	Symbol	min	typ	max	Unit
Power supply voltage	V_{DD}	4.50	5.00	5.25	V
Power supply voltage for digital output circuits	DV_{DDL}	3.0		3.6	V
Digital input voltage	"H" level	V_{IH}	2.4	V_{DD}	V
	"L" level	V_{IL}	V_{SS}	0.8	V
Reference voltage	"H" level	V_{RT}	3.0	V_{DD}	V
	"L" level	V_{RB}	V_{SS}	2.0	V
Clock	"H" level pulse width	t_{WH}	25		ns
	"L" level pulse width	t_{WL}	25		ns
Analog input voltage	V_{AIN}	V_{SS}		V_{DD}	V

■ Electrical Characteristics $V_{DD}=AV_{DD}=DV_{DD}=4.5\text{V}$, $DV_{DDL}=3.0\text{V}$, $AV_{SS}=DV_{SS}=0\text{V}$, $T_a=25^\circ\text{C}$

Parameter	Symbol	Conditions	min	typ	max	Unit
Power consumption	P_C	$V_{DD}=5.0\text{V}$, $DV_{DDL}=3.3\text{V}$, $f_{CLK}=16\text{MSPS}$ (not including reference current)		120	150	mW
Resolution	RES			9		bit
Linearity error	E_L	$f_{CLK}=16\text{MSPS}$		± 2.5	± 3.5	LSB
Differential linearity error	E_D	$V_{RT}=3.3\text{V}$ $V_{RB}=1.3\text{V}$		± 0.6	± 1.0	LSB
Maximum conversion rate	$F_{C(max)}$		16			MSPS
Clock frequency	f_{CLK}		1		16	MHz
Analog input dynamic range	D_R		2		$V_{RT}-V_{RB}$	V
Output current	"H" level	I_{OH}			-2	mA
	"L" level	I_{OL}	$V_{OH}=DV_{DDL}-0.8\text{V}$, $V_{DD}=5.0\text{V}$, $DV_{DDL}=3.3\text{V}$			
		I_{OL}	$V_{OL}=0.4\text{V}$, $V_{DD}=5.0\text{V}$ $DV_{DDL}=3.3\text{V}$	2		mA
Output delay time	t_d	$V_{DD}=5.0\text{V}$, $DV_{DDL}=3.3\text{V}$, $C_L=10\text{pF}$	10	30	45	ns
Analog input capacitance	C_I	$V_{DD}=5.0\text{V}$		26		pF

■ Timing Chart

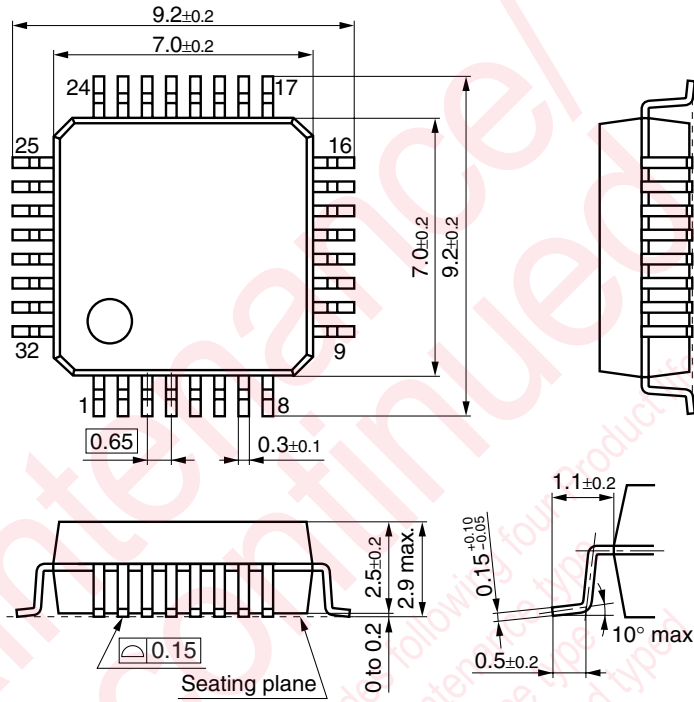
The chip samples the analog input at the falling edge of the clock signal and provides the corresponding digital output 2.5 clock cycles later at the rising edge of the clock signal.



Note: The circles indicate analog signal sampling points.

■ Package Dimensions (Unit:mm)

QFH032-P-0707



Note) The package of this product will be changed to the following lead-free type (QFH032-P-0707C).

Request for your special attention and precautions in using the technical information and semiconductors described in this book

- (1) If any of the products or technical information described in this book is to be exported or provided to non-residents, the laws and regulations of the exporting country, especially, those with regard to security export control, must be observed.
- (2) The technical information described in this book is intended only to show the main characteristics and application circuit examples of the products, and no license is granted under any intellectual property right or other right owned by our company or any other company. Therefore, no responsibility is assumed by our company as to the infringement upon any such right owned by any other company which may arise as a result of the use of technical information described in this book.
- (3) The products described in this book are intended to be used for standard applications or general electronic equipment (such as office equipment, communications equipment, measuring instruments and household appliances).
Consult our sales staff in advance for information on the following applications:
 - Special applications (such as for airplanes, aerospace, automobiles, traffic control equipment, combustion equipment, life support systems and safety devices) in which exceptional quality and reliability are required, or if the failure or malfunction of the products may directly jeopardize life or harm the human body.
 - Any applications other than the standard applications intended.
- (4) The products and product specifications described in this book are subject to change without notice for modification and/or improvement. At the final stage of your design, purchasing, or use of the products, therefore, ask for the most up-to-date Product Standards in advance to make sure that the latest specifications satisfy your requirements.
- (5) When designing your equipment, comply with the range of absolute maximum rating and the guaranteed operating conditions (operating power supply voltage and operating environment etc.). Especially, please be careful not to exceed the range of absolute maximum rating on the transient state, such as power-on, power-off and mode-switching. Otherwise, we will not be liable for any defect which may arise later in your equipment.
 - Even when the products are used within the guaranteed values, take into the consideration of incidence of break down and failure mode, possible to occur to semiconductor products. Measures on the systems such as redundant design, arresting the spread of fire or preventing glitch are recommended in order to prevent physical injury, fire, social damages, for example, by using the products.
- (6) Comply with the instructions for use in order to prevent breakdown and characteristics change due to external factors (ESD, EOS, thermal stress and mechanical stress) at the time of handling, mounting or at customer's process. When using products for which damp-proof packing is required, satisfy the conditions, such as shelf life and the elapsed time since first opening the packages.
- (7) This book may be not reprinted or reproduced whether wholly or partially, without the prior written permission of Matsushita Electric Industrial Co., Ltd.