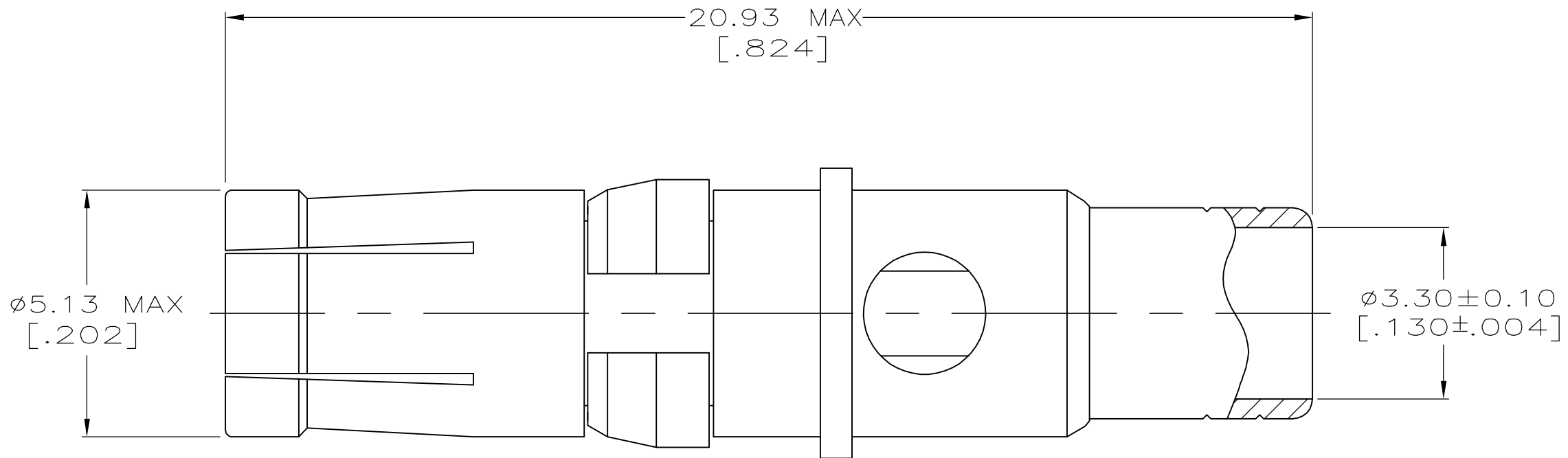


THIS DRAWING IS UNPUBLISHED. RELEASED FOR PUBLICATION - ,N/A .

© COPYRIGHT N/A BY TYCO ELECTRONICS CORPORATION. ALL RIGHTS RESERVED.

LOC	DIST	REVISIONS					
AJ	16	P	LTR	DESCRIPTION	DATE	DWN	APVD
		E		REV PER 0H14-0145-05	03-05	AA	DM



- ① BRASS PER QQ-B-626.
- ② PHOSPHOR BRONZE PER QQ-B-750.
- ③ BERYLLIUM COPPER PER QQ-C-530.
- ④ PTFE PER MIL-P-14468.
- ⑤ NICKEL PLATE PER QQ-N-290.
- ⑥ GOLD PLATE PER MIL-G-45204.
- ⑦ TIN-LEAD PLATE PER ASTM-B-545.
- ⑧ COPPER PLATE PER AMS2418.
- 9. DIELECTRIC AND CONTACT ASSEMBLY WILL WITHSTAND 2.5 LB PUSHOUT FORCE DIRECTED FROM MATING END.
- ⑩ TIN PLATE PER ASTM-B-545.

⑤ ⑥ ⑧ ⑩	5-221358-1
⑤ ⑥ ⑦ ⑧	221358-1
SHELL FINISH	PART NO.

THIS DRAWING IS A CONTROLLED DOCUMENT.		DWN B. WERNER 23-AUG-91	Tyco Electronics Corporation Harrisburg, Pa 17105-3608	
DIMENSIONS: INCHES		CHK D. DOYE 25-SEP-91		
TOLERANCES UNLESS OTHERWISE SPECIFIED:		APVD D. DOYE 25-SEP-91	NAME	
0 PLC ± - 1 PLC ± - 2 PLC ± - 3 PLC ± - 4 PLC ± - ANGLES ± -		PRODUCT SPEC	SOCKET, STRAIGHT 50 OHM, SIZE 8	
MATERIAL ① - ④		FINISH SEE TABLE	APPLICATION SPEC	RESTRICTED TO
		WEIGHT -	SIZE A3	CAGE CODE 00779
		CUSTOMER DRAWING	DRAWING NO C-221358	RESTRICTED TO -
			SCALE 10:1	SHEET 1 OF 1
				REV E