

# Ga Al As HIGH INTENSITY LEDS



OPTOELECTRONIC PRODUCTS  
DIVISION

### FEATURES

- High infrared radiation output
- Low degradation rate
- Hermetically sealed packages
- Wide variety of package types to fit varied applications

### DESCRIPTION

Micropac's family of high intensity LEDs is comprised of a P-N gallium aluminum arsenide high intensity infrared LED packaged in a wide variety of hermetically sealed housings. In addition to the standard Ga Al As LEDs, Micropac can package high intensity LEDs in compliance with custom requirements.

### TESTING

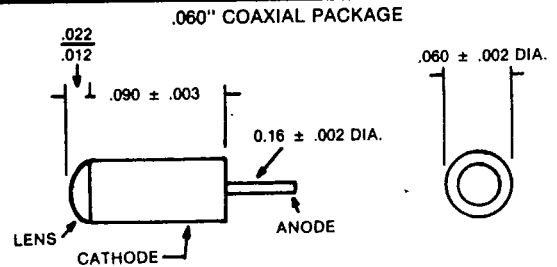
Micropac's Ga Al As high intensity LEDs can be tested to customer specifications, as well as to MIL-STD 883B and 750 standards using Micropac's extensive in-house test facilities.

### ABSOLUTE MAXIMUM RATINGS

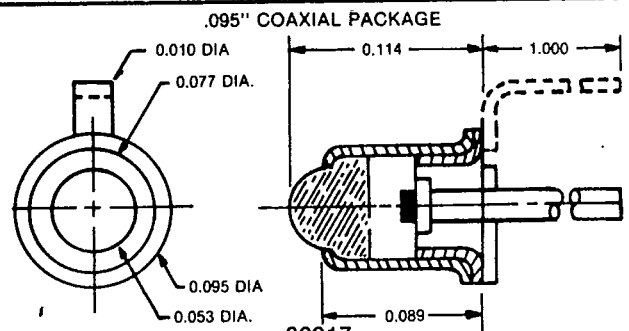
25°C FREE AIR TEMPERATURE UNLESS NOTED:

Reverse Voltage .....	2 V
Total Device Dissipation at or Below 25°C (See Note) .....	125 mW
Operating Case Temperature .....	- 65°C to + 125°C
Storage Temperature Range .....	- 65°C to + 150°C
Soldering Temperature 1/16 Inch From Case For 10 Seconds .....	240°C

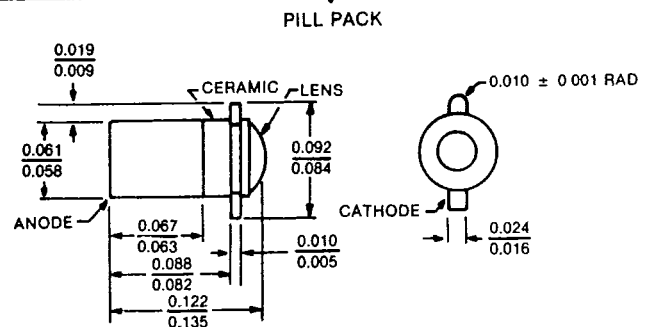
NOTE: Derate linearly above 25°C at the rate of 1.25 mW/°C.



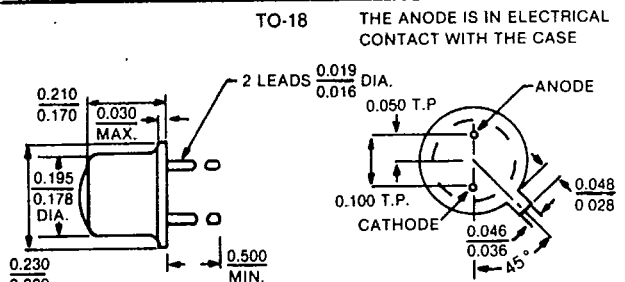
62016



62017



62005



62006

ALL DIMENSIONS ARE IN INCHES UNLESS OTHERWISE SPECIFIED



**MICROPAC INDUSTRIES, INC.**  
OPTOELECTRONIC PRODUCTS DIVISION

725 E. Walnut St., Garland, Texas 75040 Tel. 214/272-3571  
TWX 910-860-5186

# MICROPAC Ga Al As HIGH INTENSITY LEDs

PARAMETER	OPTICAL POWER		FORWARD VOLTAGE	REVERSE BREAKDOWN	RADIATION RISE TIME	PEAK WAVE LENGTH	BEAM ANGLE
TEST CONDITION	$I_F = 50\text{mA}$		$I_F = 50\text{mA}$	$I_R = 10\ \mu\text{A}$		$I_F = 50\text{mA}$	Note
SYMBOL	$P_O$		$V_F$	$BV_R$	$t_R$	$\lambda_P$	$\theta$
UNIT	MW		VOLTS	VOLTS	$\mu\text{-SEC}$	nM	DEGREES
	MIN.	TYP.	MAX.	MIN.	TYP.	TYP.	TYP.
62005-1	1.0	3.0	1.7	2.0	0.5	880	18
62005-2	4.0	5.0	1.7	2.0	0.5	880	18
62006-1	1.0	5.0	1.7	2.0	0.5	880	20
62006-2	6.0	10.0	1.7	2.0	0.5	880	20
62016-1	1.0	3.0	1.7	2.0	0.5	880	18
62016-2	4.0	7.0	1.7	2.0	0.5	880	18
62017-1	1.0	3.0	1.7	2.0	0.5	880	18
62017-2	4.0	7.0	1.7	2.0	0.5	880	18

NOTE: Angle between half-intensity points.

