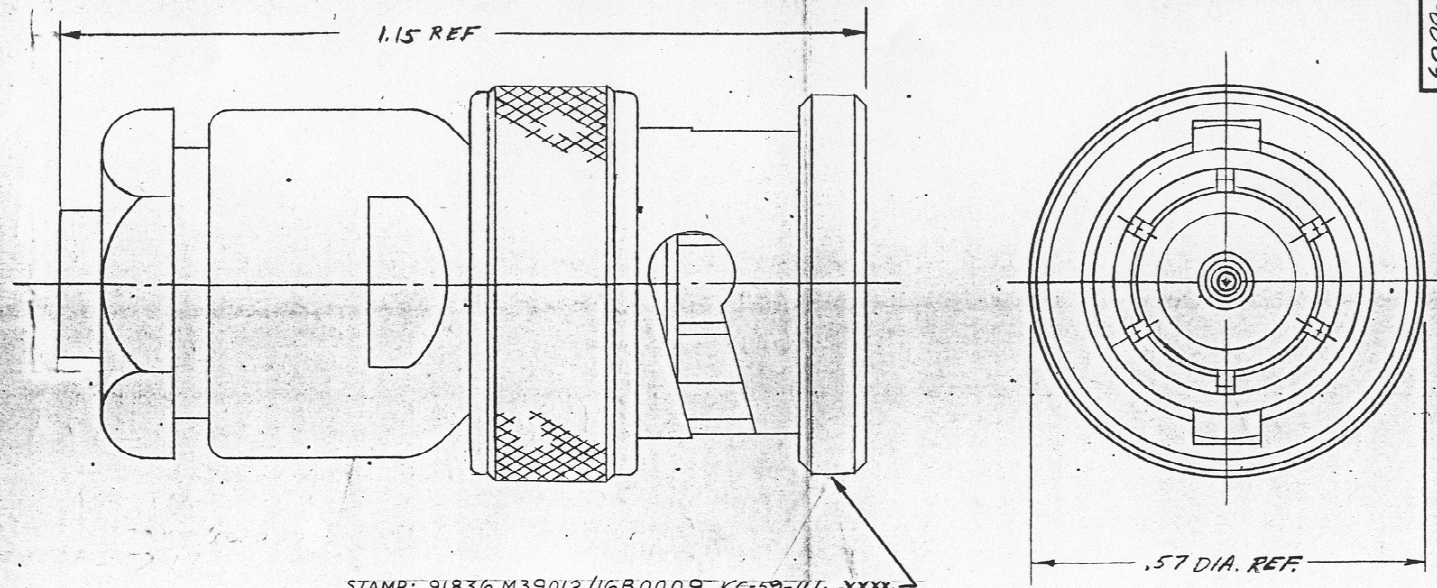


M39012/16-0009

REVISIONS

ISSUE	CHANGES
9	CN 29151 D KH 12 SEP 8
10	CN 32256 A LNM 6 JUN 9



STAMP: 91836 M39012/16B0009 KC-59-111-XXXX

DATE CODE

S-D

NOTES:
FOR USE WITH RG-122, 180, 180A, 195 & 195A/U CABLE.

KC-59-111

REF.	SUPERSEDES UG 1791/U
FINISH	
SPEC.	
MATL.	
SPEC.	

PLUG

DRAWN CRS	DATE 14 APR 7
APPR. DAM	DATE 28 AUG 7

KINGS ELECTRONICS
40 MARLBOROUGH ROAD
TUCKAHOE, N. Y. 10707

- UNLESS OTHERWISE SPECIFIED:
1. TOLERANCES: FRACTIONS & 2 PLACE DECIMALS ± .010
3 PLACE DECIMALS ± .004
T. I. R. CONCENTRICITY OF ANY 2 DIAMETERS MAY NOT EXCEED THE SUM OF THEIR TOLERANCES.
 2. REMOVE ALL BURRS. BREAK SHARP EDGES .005 MAX.
 3. NO FILLETS PERMITTED.
 4. SURFACE ROUGHNESS 63 MICROINCHES RMS MAX.
 5. ALL DIMENSIONS PRIOR TO PLATING.

ITEM	REQ'D	DESCRIPTION	DRAWING NO.
			M39012/16-0009