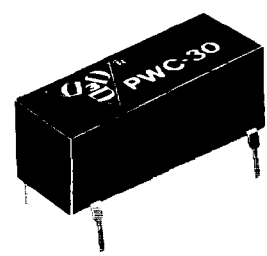


Fast Logic
Pulse Width Controller

SERIES: PWC-30

**TTL Interfaced
 14 pin DIP**



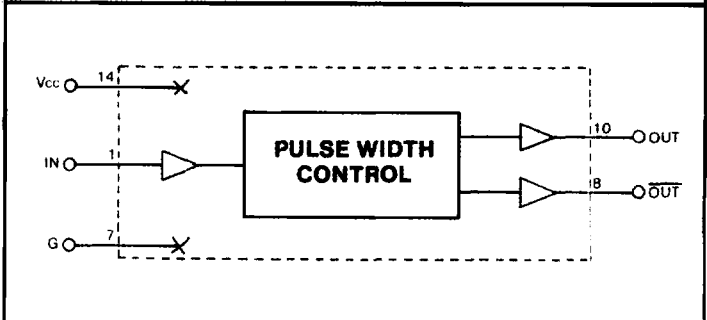
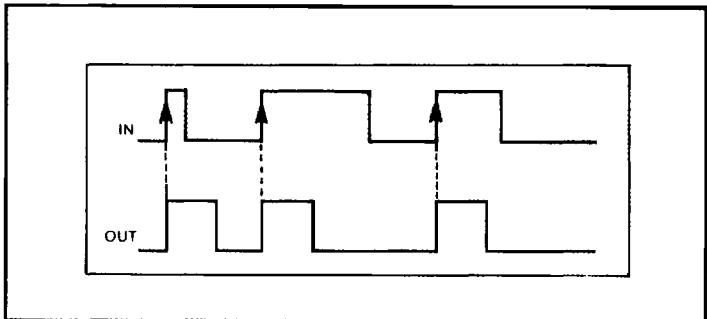
Features:

- Exact control of pulse width
- Rising edge trigger
- Auto-insertable
- Low power consumption
- High speed

Specifications:

- Trigger Inherent Delay: $T_{DO} = 6.5 \pm 1 \text{ ns}$
 $\overline{T_{DO}} = 8.5 \pm 1 \text{ ns}$
- Pulse-width tolerance = 5% or 2 ns (others on request)
- Max. input PRR = PW + 20 ns.
- Supply voltage: 5 Vdc.
- Supply current: 45 ma. typ.
- Operating temperature: 0°C to 70°C (-55° to 125°C on request).*
- Temperature coefficient: 100 PPM/°C.
- Output rise-time: 2 ns typ.
- DC parameters: See TTL-Standard Schottky Logic Table on Page 6.

*DIL package used. E5 case.



Part No.	Pulse Width (ns)
PWC-30-5	5
PWC-30-10	10
PWC-30-15	15
PWC-30-20	20
PWC-30-30	30
PWC-30-40	40
PWC-30-50	50
PWC-30-60	60
PWC-30-75	75
PWC-30-100	100
PWC-30-125	125
PWC-30-150	150
PWC-30-175	175
PWC-30-200	200
PWC-30-250	250
PWC-30-300	300
PWC-30-350	350
PWC-30-400	400
PWC-30-500	500

