

NOTES:

1. MATERIALS & FINISHES:

BODY = ZAMAC #3 (ASTM-B86), TIN PLATED(.000100/.000300) THICK PER MIL-T-10727.
 OUTER CONTACT & WASHERS (2) = BRASS (ASTM-B-16 H02, C36000), TIN PLATED(.000100/.000300) THICK PER MIL-T-10727.
 SLEEVES (2) = PBT, 15% GLASS FILLED, INJECTION GRADE VALOX 815
 MALE CONTACT = BRASS (ASTM-B-16 H02, C36000), GOLD PLATE (.000030/.000100) THICK PER MIL-G-45204, TYPE I
 GRADE C, OVER NICKEL (.000080/.000130) THICK PER QQ-N-290 CLASS I -OVER- COPPER STRIKE
 PER MIL-C-14550 (.000020 MAX) THICK
 COMPRESSION SPRING = MUSIC WIRE, HIGH CARBON STEEL ALLOY PER ASTM A228.
 FERRULE = SEAMLESS COPPER TUBING, ALLOY 122 (DHP), ASTM-B75 HARD, DRAWN TO ROCKWELL
 58-77 ON 30T SCALE, NICKEL PLATED (.000100/.000250 THICK. AN UNDERLAY OF .000020 COPPER IS
 OPTIONAL TO ASSIST ADHESION REQUIREMENTS.
 INSULATOR = PTFE, ASTM-D1710 OR EQUIV.
 CAP = BRASS (ASTM-B36), NICKEL PLATED NICKEL PLATED(.000100/.000250) THICK.
 AN UNDERLAY OF .000020 COPPER IS OPTIONAL TO ASSIST ADHESION REQUIREMENTS.

2. PACKAGING:

A. BULK PACKAGE CONNECTOR 100 PER BAG.
 B. MARK BAG OR TAG "81-204-4050 YYWW".

3. INSULATOR (ITEM 4) IS A PRESS FIT INTO BODY ASS'Y. (ITEM 3).
 INSULATOR MUST BE BOTTOMED AS SHOWN.

4. CAP (ITEM 2) & FERRULE (ITEM 1) TO BE SUPPLIED UNASSEMBLED.

5. INSULATOR (ITEM 4) MUST WITHSTAND A 6 LB. MIN. PUSHOUT FORCE FROM CABLE END OF CONNECTOR.

6. CRIMP USING AMPHENOL TOOL 227-944 (M22520/5-01)
 AND DIE SET 227-1221-11, CAVITY "A" (.213 HEX.)
 AND CAVITY "B" (.068 HEX.)

7. SLEEVE, ITEM 7, MUST WITHSTAND A 75 LB. MIN. PULL.

8. AFTER ASSEMBLY, THE OUTER CONTACT TINES (ITEM 9) MUST MEET THE DIMENSION SHOWN.

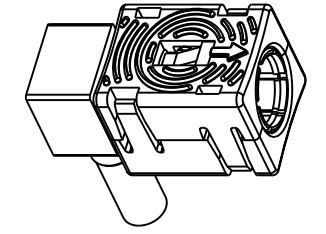
81-204-4050

DRAWING NO. THIRD ANGLE PROJ.

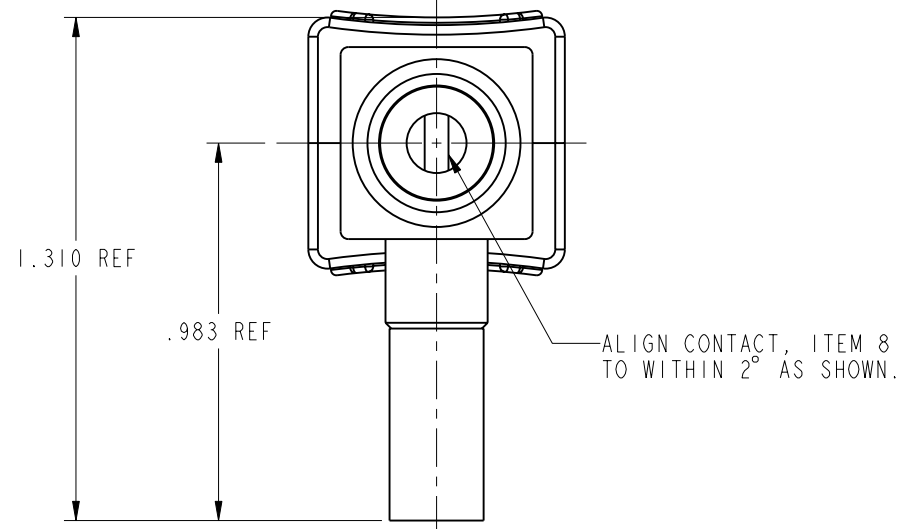
REVISIONS

REV	DESCRIPTION	DATE	ECO	APPR
A	RELEASE FOR MFG.	5/7/02	44037	CPM
B	A) CHANGED PLATING IN NOTE 1	7/10/02	44106	GSA
C	A) DELETE STAKE NOTE, CHANGE NOTE 3.	7/31/02	44126	GSA
D	A) ITEM 9 WAS: 81-8135-TE B) ADDED NOTE 8 AND $\varnothing .356 \pm .002$	3/13/03	44397	BCG

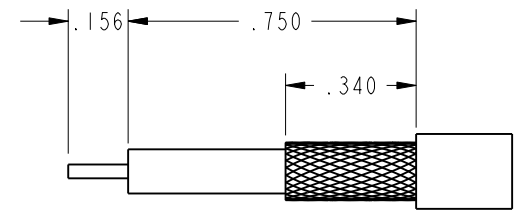
CONFIGURATION CONTROL:
NO CHANGES PERMITTED TO DRAWING WITHOUT
PPAP QUALIFIED CUSTOMER APPROVAL



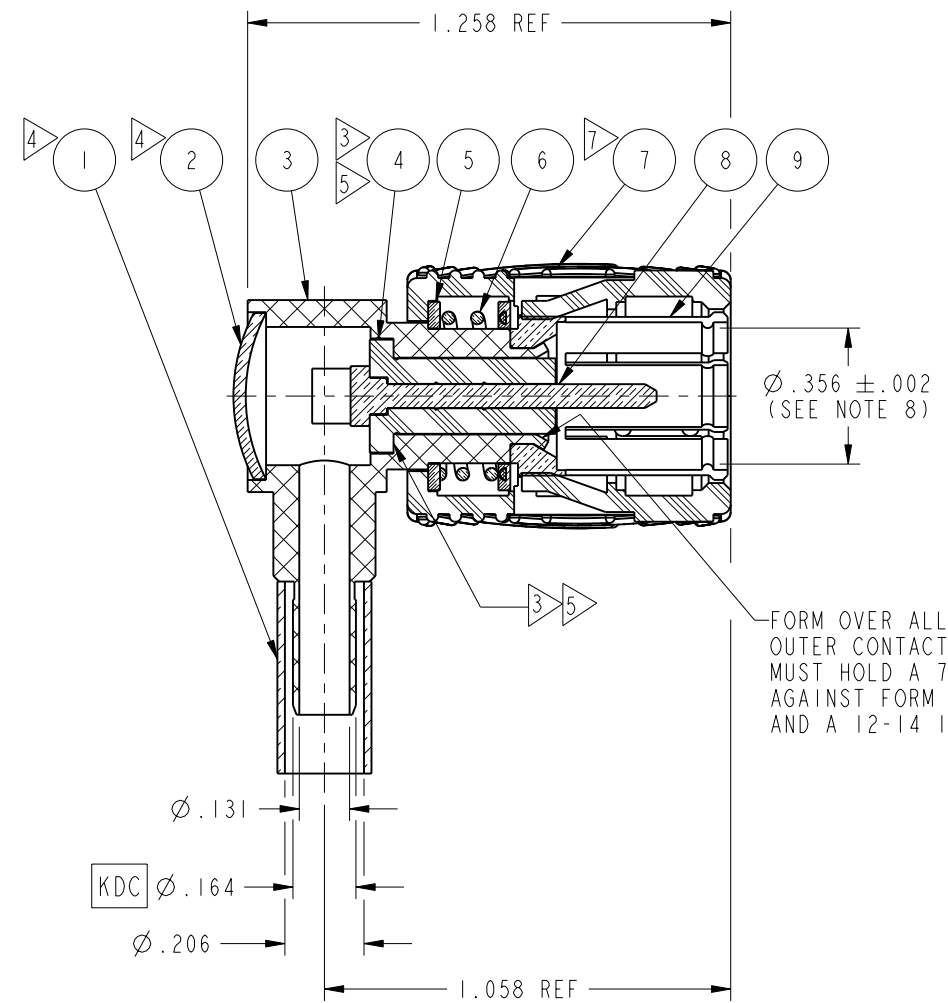
SCALE 1.000



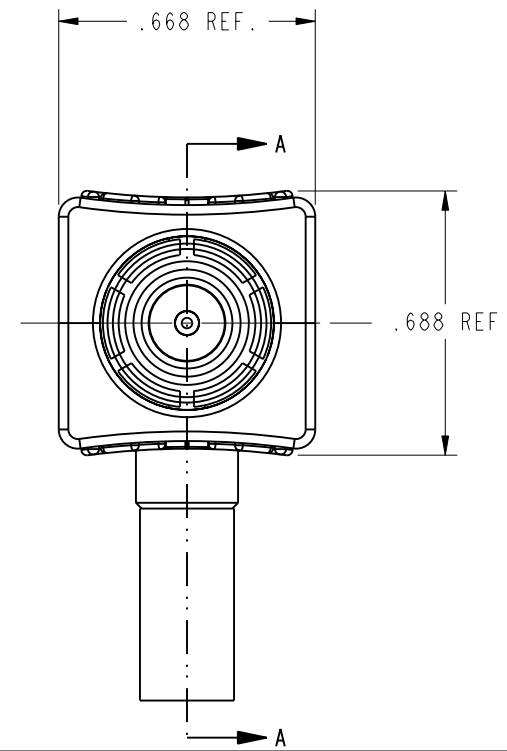
THIS VIEW SHOWN WITHOUT CAP, ITEM 2



SUGGESTED CABLE STRIPPING DIMENSIONS
 SCALE 2.000



SECTION A-A



81-8148-TE	1	9	OUTER CONTACT	NOTE 1
81-8141-HK	1	8	CONTACT, MALE	NOTE 1
81-8140	2	7	SLEEVE	
81-8116	1	6	COMPRESSION SPRING	
81-8134-TE	2	5	WASHER	NOTE 1
81-8137	1	4	INSULATOR	
81-8138-TE	1	3	BODY	NOTE 1
81-8139-NA	1	2	CAP	NOTE 1
81-8118-NA	1	1	FERRULE	NOTE 1
PART NUMBER	QTY.	ITEM	DESCRIPTION	FINISH

UNLESS OTHERWISE SPECIFIED, DIMENSIONS ARE IN INCHES AND TOLERANCES ARE: 2 PLACE DECIMAL $\pm .015$ (0,381 mm) 3 PLACE DECIMAL $\pm .005$ (0,127 mm) ANGLES $\pm 1^\circ$	MATERIAL REFERENCE EAR# 565 GEN# ASSYM4_MINI-UHF SIMILAR TO 611X-3856 KDC = KEY DESIGN CHARACTERISTIC	DRAWN C. McGRATH DATE 4/29/02	TITLE MINI-UHF, RIGHT ANGLE, SNAP ON FOR RG-58	Amphenol Amphenol Corporation Communication and Network Products Division Danbury, CT U.S.A. 06810
		ENGINEER G. ANTONINI DATE 4/29/02		
NOTICE - These drawings, specifications, or other data (1) are, and remain the property of Amphenol Corp. (2) must be returned upon request; and (3) are confidential and not to be disclosed to any person other than those to whom they are given by Amphenol Corp. The furnishing of these drawings, specifications, or other data by Amphenol Corp., or to any other person to anyone for any purpose is not to be regarded by implication or otherwise in any manner licensing, granting rights or permitting such holder or any other person to manufacture, use or sell any product, process or design, patented or otherwise, that may in any way be related to or disclosed by said drawings, specifications, or other data.	CAD FILE I:\MINI-UHF\81-204-4050	CODE ID 74868	DWG SIZE B	DRAWING NO. 81-204-4050
		SCALE: 2.0:1	SHEET 1 OF 1	REV D