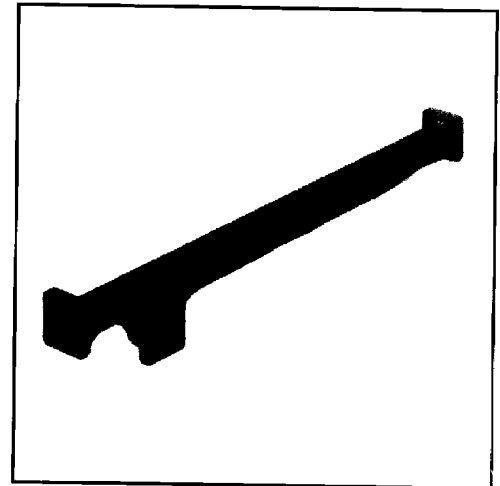


3.95-40 GHz

## HIGH DIRECTIVITY WAVEGUIDE DIRECTIONAL COUPLERS

- High Directivity
- Excellent Coupling Flatness
- Broadwall Style



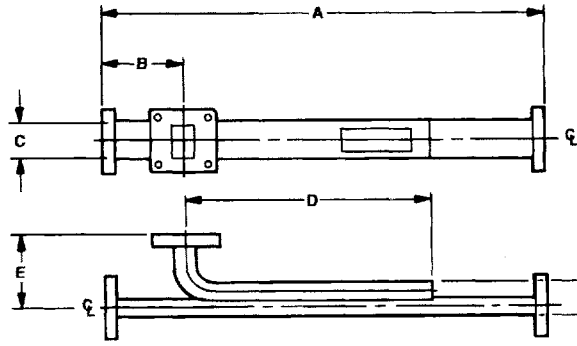
### SPECIFICATIONS

FREQUENCY RANGE (GHz)	MODEL	MEAN COUPLING (dB)	COUPLING VARIATION (dB)	DIRECTIVITY (dB)	VSWR		FREQUENCY SENSITIVITY (dB)	SECONDARY ARM TERMINATION POWER RATING (Watts)	WAVEGUIDE SIZE	FLANGE*	WEIGHT	
					PRIMARY Max (dB)	SECONDARY MAX (dB)					Oz	Gr
3.95-5.85	1073B-10	10dB	±0.5	40dB	1.08	1.12	±0.5dB	1W	WR-187	UG-407/U	40	1135
	1073B-20	20dB	±0.5	40dB	1.08	1.12	±0.5dB	1W	WR-187	UG-407/U	40	1135
	1073B-30	30dB	±0.5	40dB	1.08	1.12	±0.5dB	1W	WR-187	UG-407/U	40	1135
	1073B-40	40dB	±0.5	40dB	1.08	1.12	±0.5dB	1W	WR-187	UG-407/U	40	1135
5.85-8.20	1072B-10	10dB	±0.5	40dB	1.08	1.10	±0.5dB	1W	WR-137	UG-441/U	24	681
	1072B-20	20dB	±0.5	40dB	1.08	1.10	±0.5dB	1W	WR-137	UG-441/U	24	681
	1072B-30	30dB	±0.5	40dB	1.08	1.10	±0.5dB	1W	WR-137	UG-441/U	24	681
	1072B-40	40dB	±0.5	40dB	1.08	1.10	±0.5dB	1W	WR-137	UG-441/U	24	681
8.2-12.4	1070B-10	10dB	±0.5	40	1.08	1.12	±0.5dB	1W	WR-90	UG-39/U	10	290
	1070B-20	20dB	±0.5	40	1.08	1.12	±0.5dB	1W	WR-90	UG-39/U	10	290
	1070B-30	30dB	±0.5	40	1.08	1.12	±0.5dB	1W	WR-90	UG-39/U	10	290
	1070B-40	40dB	±0.5	40	1.08	1.12	±0.5dB	1W	WR-90	UG-39/U	10	290
12.4-18	1069B-10	10dB	±0.5	40	1.08	1.15	±0.5dB	1W	WR-62	UG-419/U	7	200
	1069B-20	20dB	±0.5	40	1.08	1.15	±0.5dB	1W	WR-62	UG-419/U	7	200
	1069B-30	30dB	±0.5	40	1.08	1.15	±0.5dB	1W	WR-62	UG-419/U	7	200
	1069B-40	40dB	±0.5	40	1.08	1.15	±0.5dB	1W	WR-62	UG-419/U	7	200
18-26.5	1068B-10	10dB	±0.5	35	1.08	1.20	±0.6dB	1W	WR-42	UG-597/U	5	145
	1068B-20	20dB	±0.5	35	1.08	1.20	±0.6dB	1W	WR-42	UG-597/U	5	145
	1068B-30	30dB	±0.5	35	1.08	1.20	±0.6dB	1W	WR-42	UG-597/U	5	145
	1068B-40	40dB	±0.5	35	1.08	1.20	±0.6dB	1W	WR-42	UG-597/U	5	145
26.5-40	V1067B-10	10dB	±0.5	35	1.08	1.20	±0.7dB	1W	WR-28	UG-599U	4	115
	V1067B-20	20dB	±0.5	35	1.08	1.20	±0.7dB	1W	WR-28	UG-599U	4	115
	V1067B-30	30dB	±0.5	35	1.08	1.20	±0.7dB	1W	WR-28	UG-599U	4	115
	V1067B-40	40dB	±0.5	35	1.08	1.20	±0.7dB	1W	WR-28	UG-599U	4	115

\*Aluminum flange with all clear holes

NOTE: Consult the factory for custom-order models.

## OUTLINE DRAWINGS



MODEL	A ±.03	B ±.03	C REF.	D REF.	E ±.03	F REF.
V1067B-10 V1067B-20 V1067B039 V1067B-40	9.00 (228.6)	0.90 (22.8)	.360 (9.1)	6.450 (163.8)	1.25 (31.7)	.400 (10.1)
1068B-10 1068B-20 1068B-30 1068B-40	10.5 (266.7)	0.90 (22.8)	.500 (12.7)	7.950 (201.9)	1.38 (35.0)	.460 (11.6)
1069B-10 1069B-20 1069B-30 1069B-40	12.5 (317.5)	1.00 (25.4)	.702 (17.8)	9.120 (231.6)	2.00 (50.8)	.742 (18.8)
1070B-10 1070B-20 1070B-30 1070B-40	17.00 (431.8)	1.25 (31.7)	1.000 (25.4)	13.050 (331.4)	2.00 (50.8)	.950 (24.1)
1072B-10 1072B-20 1072B-30 1072B-40	22.0 (558.8)	1.5 (38.1)	1.500 (38.1)	18.0 (457.2)	4.00 (101.6)	1.52 (38.6)
1073B-10 1073B-20 1073B-30 1073B-40	30.0 (762.0)	2.0 (50.8)	2.00 (50.8)	26.0 (107.9)	4.25 (53.3)	2.1 (53.3)

Dimensions in parentheses are in millimeters and for reference only.

All dimensions Max. unless otherwise specified.