

2-GHz Single-Balanced Mixer

Description

The U2796B-FP is a 2-GHz down-conversion mixer for telecommunication systems, e.g. cellular radio, CT1, CT2, DECT, PCN, using TEMIC Semiconductors' advanced bipolar UHF technology. The U2796B is well suited for the receiver portion of the RF circuit. Single-balanced structure has been chosen for best noise

performance and low current consumption. The IIP3 is programmable.

Electrostatic sensitive device.

Observe precautions for handling.



Features

- Supply-voltage range: 2.7 V to 5.5 V
- Excellent isolation characteristics
- Low current consumption: 3.2 mA without R_{IP3}
- IIP3 programmable
- Input frequency operating range up to 2 GHz
- RF characteristic nearly independent of supply voltage

Benefits

- Stand-alone product
- Low current consumption extends talk time
- 3-V operation requires only small space for batteries

Block Diagram

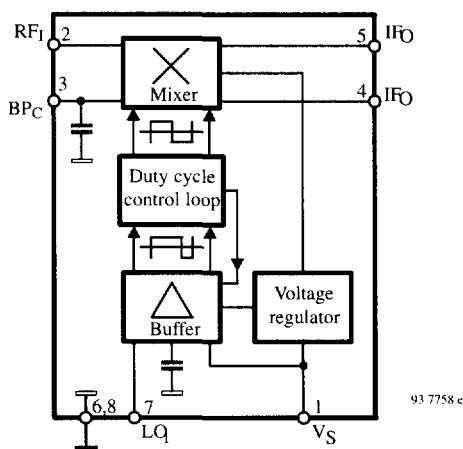
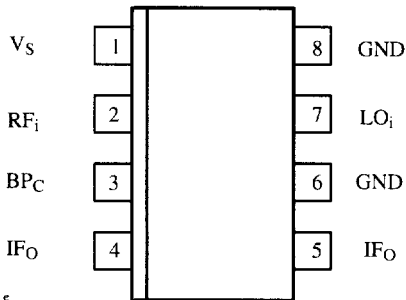


Figure 1.

Ordering Information

Extended Type Number	Package	Remarks
U2796B-BFP	SO8	Tube
U2796B-BFPG3	SO8	Taped and reeled

Pin Description



93 7820 e

Figure 2.

Pin	Symbol	Function
1	V_S	Supply voltage
2	RF	RF input and IIP3 programming port
3	BP_C	Bypass capacitor
4	IF_o	IF output
5	IF_o	IF output
6	GND	Ground
7	LO_i	Local oscillator input
8	GND	Ground

Absolute Maximum Ratings

Parameters	Symbol	Value	Unit
Supply voltage Pin 1	V_S	6	V
Input voltage Pins 2, 3, 4, 5 and 7	V_i	0 to V_S	V
Junction temperature	T_j	125	°C
Storage temperature	T_{stg}	-40 to +125	°C

Operating Range

Parameters	Symbol	Value	Unit
Supply-voltage range Pin 1	V_S	2.7 to 5.5	V
Ambient temperature	T_{amb}	-40 to +85	°C

Thermal Resistance

Parameters	Symbol	Value	Unit
Junction ambient SO8	R_{thJA}	175	K/W

Electrical Characteristics

Test conditions (unless otherwise specified):

$V_S = 3\text{ V}$, $f_{LO} = 900\text{ MHz}$; $I_M = 1.2\text{ mA}$, $T_{amb} = 25^\circ\text{C}$. System impedance $Z_O = 50\ \Omega$

Parameters	Test conditions / Pin	Symbol	Min.	Typ.	Max.	Unit
Supply voltage	Pin 1	V_S	2.7		5.5	V
Supply current	$R_{IP3} = \infty$, Pin 1	I_S	2.8	3.2	3.7	mA
Conversion power gain	$R_L = 3\text{ k}\Omega$ $R_{IP3} = \infty$ $f_{LO} = 900\text{ MHz}$	PG_C		9		dB
	$f_{LO} = 1700\text{ MHz}$ $f_{IF} = 45\text{ MHz}$			9		

Figure 4

Isolation

LO spurious at RF_{in}	$Pi_{LO} = -10\text{ dBm}$ Figure 5 Pin 7 to 2	IS_{LORF}			-35	dBm
RF to LO	$Pi_{RF} = -25\text{ dBm}$ Pin 2 to 7 $f_{LO} = 900\text{ MHz}$	IS_{RFLO}	30	40		dB
Figure 6	$f_{LO} = 1700\text{ MHz}$			20		

Electrical Characteristics (continued)

Parameters	Test conditions / Pin	Symbol	Min.	Typ.	Max.	Unit
Operating frequencies						
RF frequency	Pin 2	RF_i			2000	MHz
LO _{in} frequency	Pin 7	LO _i			2000	MHz
IF _{out} frequency	Pins 4 and 5	IF _o			300	MHz
Input level						
RF input (-1 dB comp.)	RL = 50 Ω, Pin 2	P _{iRF}		-15		dBm
3rd-order intercept point	P _{iLO} = -10 dBm, R _{IP3} = ∞ Figure 2, Pin 2	IIP3		-4		dBm
LO input	Pin 7	P _{iLO}		-6	0	dBm
Impedances						
RF input	Pin 2	Z _{iRF}		25		Ω
LO input	Pin 7	Z _{iLO}		50		Ω
IF output	Pins 4 and 5	Z _{oIF}		> 10 kΩ// 0.9 pF		
Noise figure (DSB)	P _{iLO} = 0 dBm, RL > 3 kΩ f _{LO} = 900 MHz	NF ₅₀		9		dB
Figure 7	f _{LO} = 1700 MHz			12		
Voltage standing wave ratio LO	Pin 7	VSWR-LO		1.3	2	

Note: I_M = Internal mixer current (see figure 3)

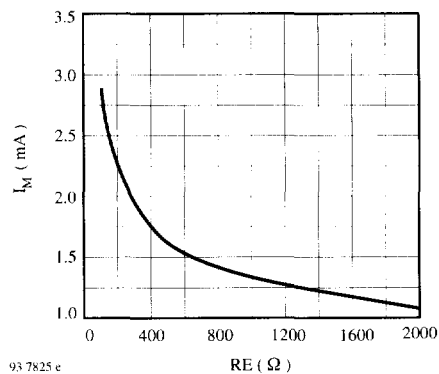


Figure 3. Mixer current (I_M) versus RE

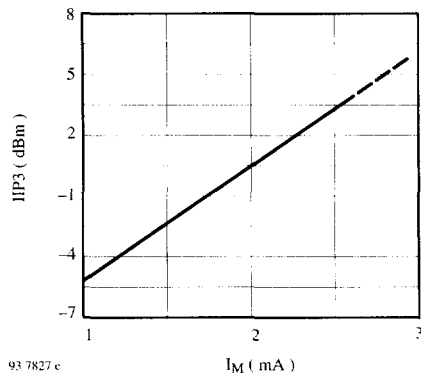


Figure 4. Third-order input intercept IIP3 point versus I_M

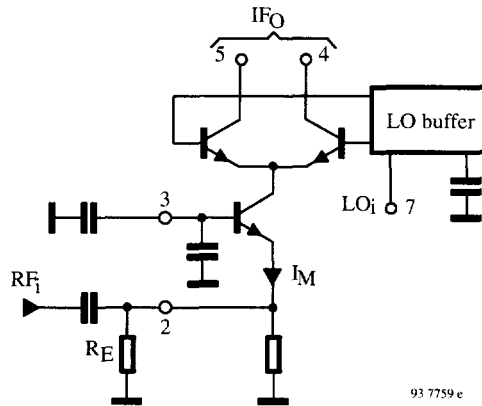


Figure 5. Mixer circuitry

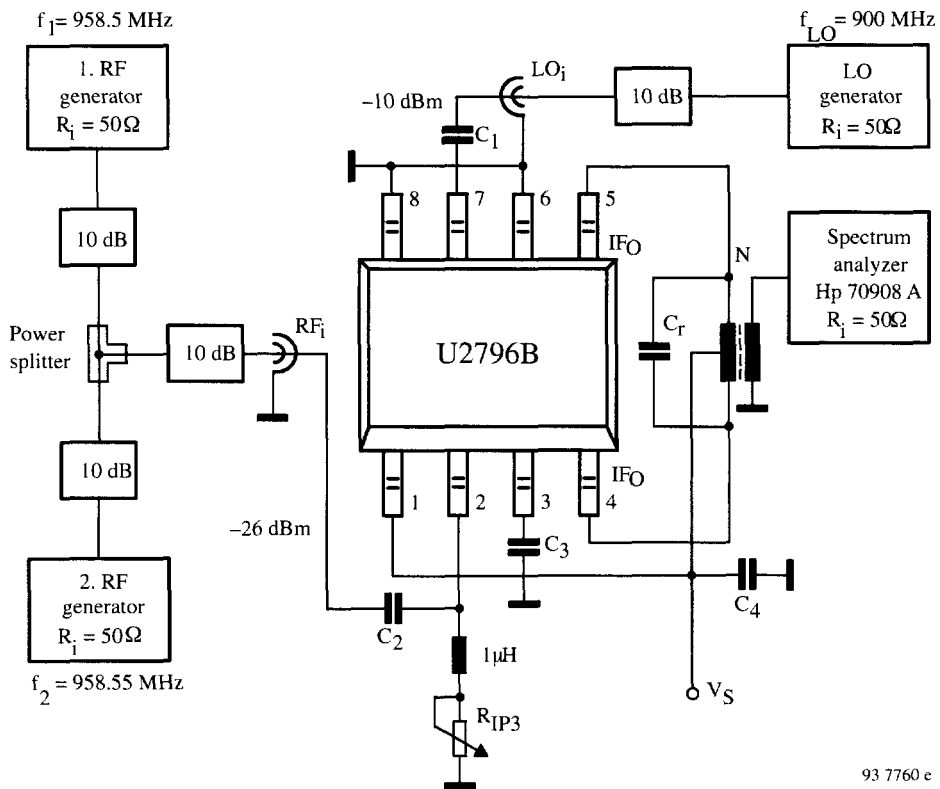


Figure 6. Test circuit conversion power gain (P_{GC}) and 3rd-order input intercept point (IIP3)

93 7761 e

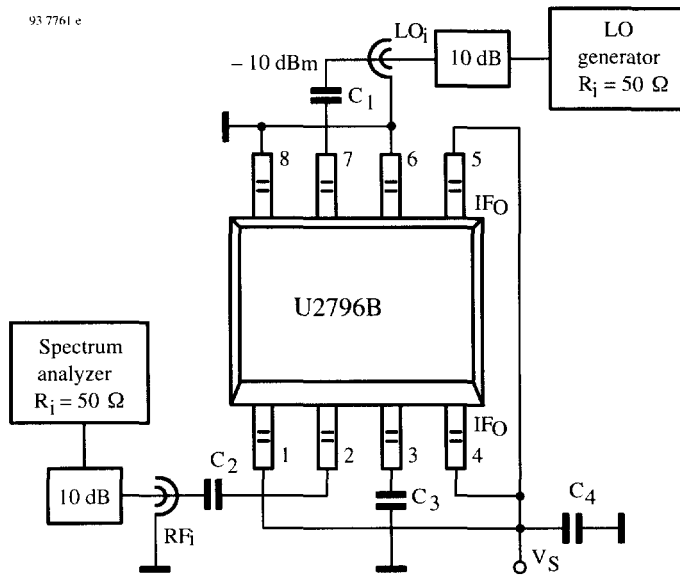
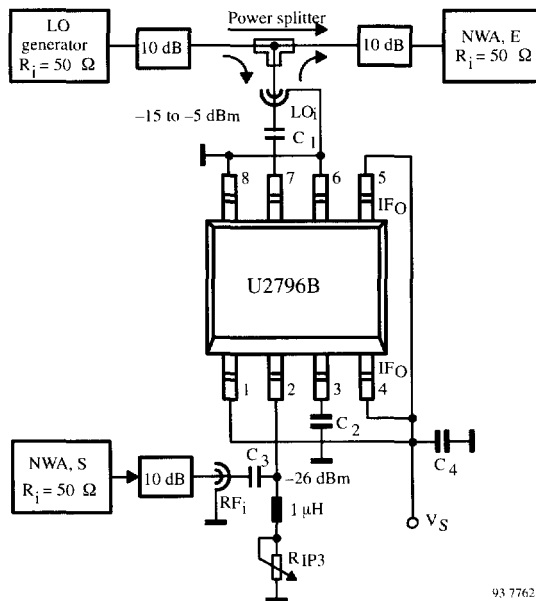


Figure 7. Test circuit isolation LO to RF



93 7762 e

Figure 8. Test circuit isolation RF to LO

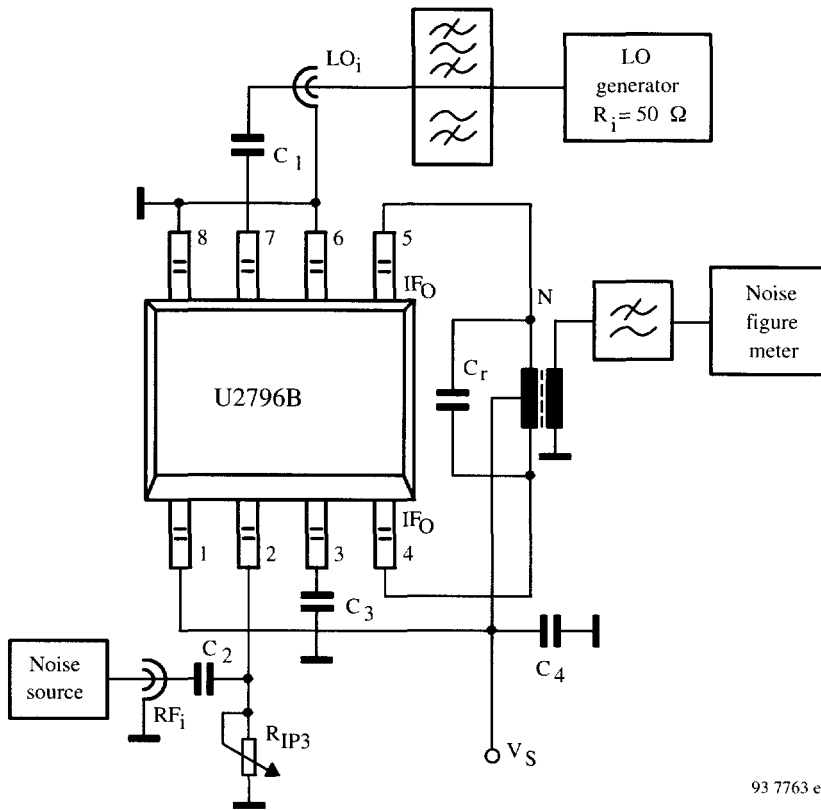


Figure 9. Test circuit noise figure

93 7763 e

Note:

1. The noise floor of the LO generator might influence the noise figure test result. In order to avoid this, either a bandpass or a highpass filter with $f_c > f_{IF}$ should be implemented.
2. If IF output network does not provide sufficient suppression of the LO component, a lowpass filter should be inserted to avoid overdriving the noise figure meter.
3. For best noise performance 0 dBm LO power level is required.

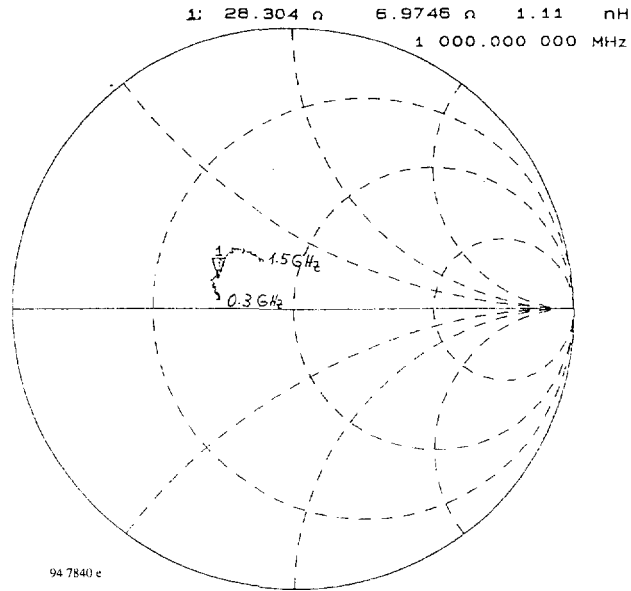


Figure 10. S11 RF input impedance

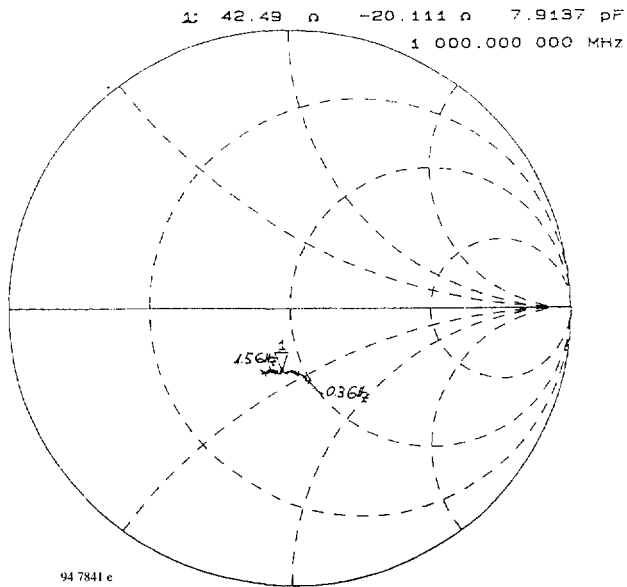


Figure 11. S11 LO input impedance

Application Circuit

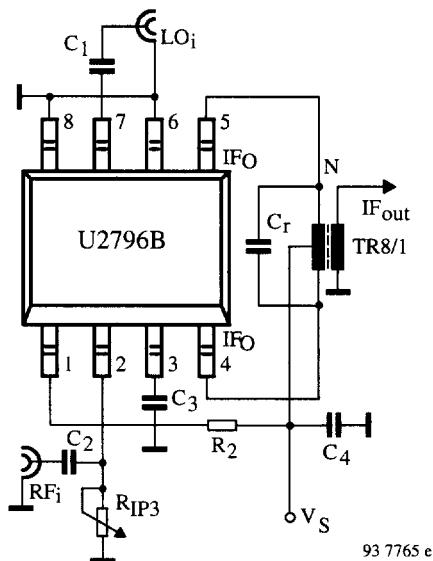


Figure 12. Application circuit

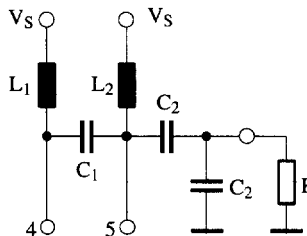
Recommended Values for the Evaluator

C_1 and $C_2 = 150$ pF, C_3 and $C_4 = 100$ nF. C_r is calculated for resonance with the balun at f_{IF} , or as a highpass filter for f_{LO} . The output balun transformer ratio $> = 8:1$ for $Z_O = 50 \Omega$. R_2 increases the IF output level and is calculated from:

$$R_2 = \frac{V_S(4, 5) - V_S(1)}{I_S(1)}$$

For example, $V_S(4, 5) = 4$ V, $V_S(1) = 3$ V, $I_S(1) = 2.2$ mA. $R_2 \approx 470 \Omega$, where $I_S(1)$ is the current consumption without the mixer stage.

the impedance of a subsequent filter is 1 k Ω , the capacitive voltage divider may be left out.



95 9632

Application Hint

The output transformer at the Pins 4 and 5 can be replaced by LC circuits as shown in figure 13. Compared to transformer, LC circuits save space and are suitable for higher IF frequencies. When applying one of these solutions, it has to be checked whether the requirements on noise figure and gain can be achieved.

The second circuit was dimensioned for approximately 130 MHz and a load resistance of 50 Ω . If, for instance,

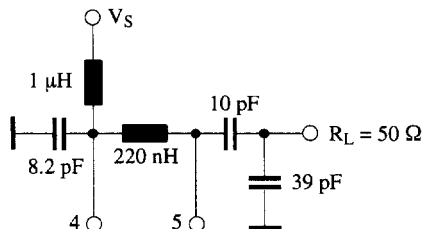


Figure 13.

Evaluation Board

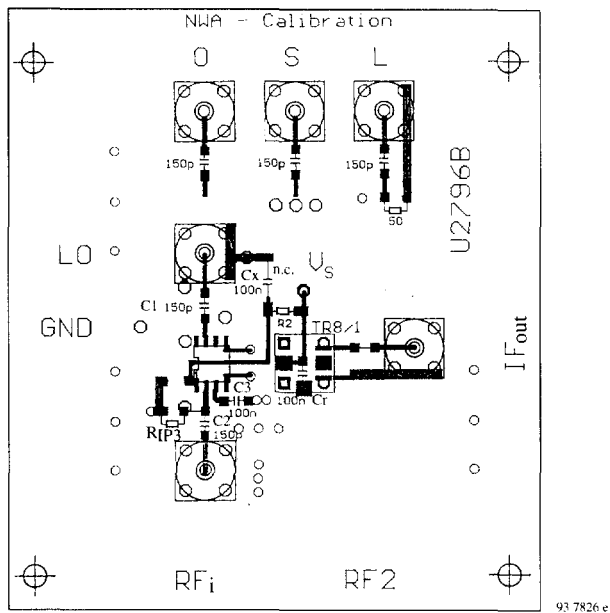


Figure 14. Evaluation board with application circuit

Package Information

Package SO8
Dimensions in mm

