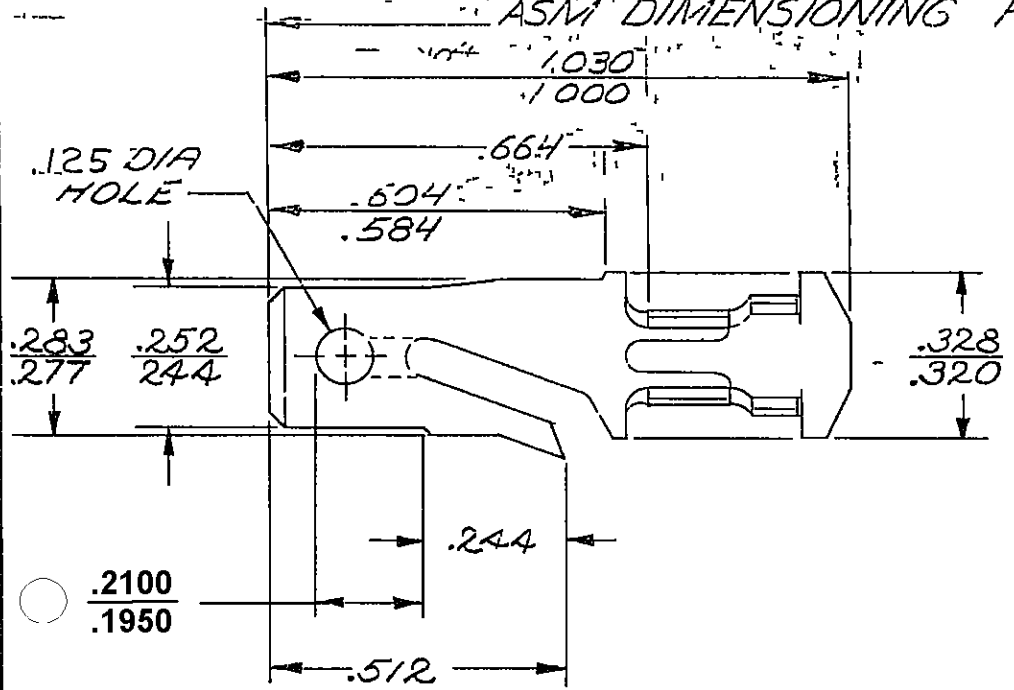


PACKARD ELECTRIC DIVISION
 GENERAL MOTORS CORPORATION
 WARREN, OHIO

DO NOT SCALE

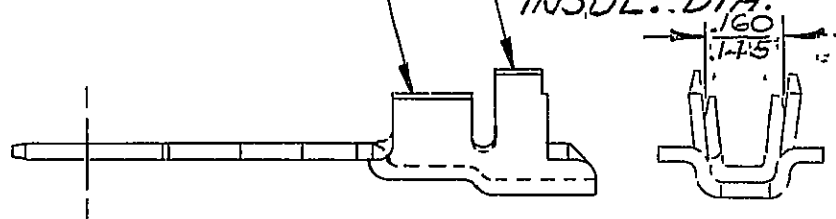
THIS DRAWING AND DESIGN HEREON CONSTITUTES A PROPRIETARY DESIGN OF PACKARD ELECTRIC DIVISION AND IS NOT TO BE DUPLICATED OR REPRODUCED WITHOUT AUTHORITY OF PACKARD ELECTRIC DIVISION

ASME DIMENSIONING POINT



CONDUCTOR WINGS FOR 0.8-0.5 MM² CABLE.

INSULATION WINGS FOR 2.40MM MAX. INSUL. DIA.



C02D1543

4174-A

-OUTLINE DRAWING-

PART NO		296548!		SIZE	A
DATE	SYM	REVISION RECORD		C/N NO	
01SE82	-	ALL PREVIOUS DATA			
		REMOVED FROM REV			
		COL. THRU REV. "AY"			
		PICTURE REVISED.		82155	
01AU83	AZ	REV. SYM. ADVANCED		86126	
12MR91	-	.448 REF WAS .444		140675	
05DE05	AZ4	ADDED DIM .2100/.1950 AND			
		REMOVED DIM (1 PLC)		274727	
CODE NO		6900		TOLERANCE UNLESS OTHERWISE SPECIFIED	
				DECIMAL ±.005	
				FRACTIONAL	
				ANGULAR ± 2°	
DWG DATE	3-19-57	SCALE	NONE	DR	PLYLER
ROUTING		CK		Plyler 1-8-60	
DEPT		APPR		RJK 1-11-60	
OUTST		APPR		L. J. BROS	
REFERENCE		APPR			
2962864 "D" SIZE-SHT 1				PROG NO	
MATERIAL SPEC		.0320 THK. SAE CA 2.60 BRASS			
		1/2 HARD-TIN PLATED			
NAME		TERMINAL-MALE-'56 SERIES			
PART NO		296548!		SIZE	
				A	

1177-1414
 16V
 36V
 82V
 92AHT
 53V
 96V
 41.054
 12A
 148P
 172 FSV(3)