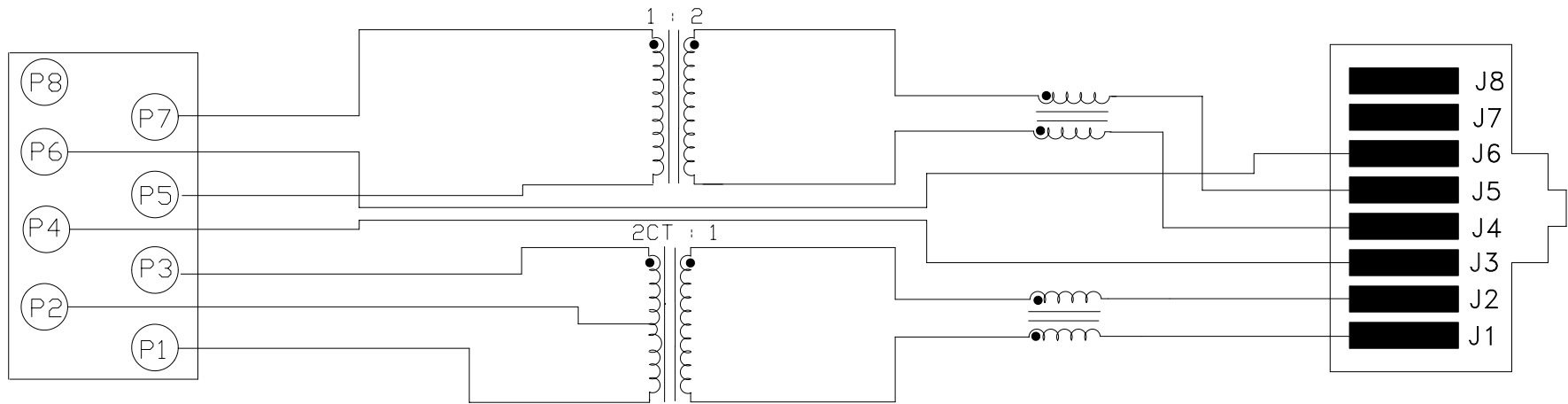


TOP VIEW



ELECTRICAL SPECIFICATIONS:

- 1.0 TURNS RATIO: (P3-P2-P1) : (J2-J1) : 2CT : 1 ±3%
(P7-P5) : (J5-J4) : 1 : 2 ±3%
- 2.0 INDUCTANCE: (J1-J2) ; (P7-P5) : 1.2mH MIN. @ 0.1V, 100KHz
- 3.0 LEAKAGE INDUCTANCE: J2-J1 (WITH P3 AND P1 SHORT) : 0.5uH MAX. @ 1MHz
P7-P5 (WITH J5 AND J4 SHORT) : 0.5uH MAX. @ 1MHz
- 4.0 INTERWINDING CAPACITANCE: (P3,P1) TO (J2,J1) : 35pf MAX @ 1MHz
(P7,P5) TO (J5,J4) : 35pf MAX. @ 1MHz
- 5.0 COMMON MODE ATTENUATION : : -20dB TYP @ 5MHz TO 100MHz
- 6.0 DIELECTRIC WITHSTAND: (P7-P5) TO (J5-J4) : 1500VAC for 60 seconds
(P3-P1) TO (J2-J1) : 1500VAC for 60 seconds
- 7.0 RETURN LOSS: (J1-J2 & J4-J5) 120 OHM REF.
51KHz TO 102KHz : 12dB MIN
102KHz TO 2.048MHz : 18dB MIN
2.048MHz TO 3.072MHz : 14dB MIN
- NOTE: 30 OHMS CONNECTED TO PINS P5-P7, 400 OHMS CONNECTED TO PINS P3-P1
- 8.0 DC RESISTANCE: (P7-P5) : .8 ohms Max.
(P3-P1) : 1.2 ohms Max.

NOTES

1.0 PINS WITHOUT ELECTRICAL CONNECTION ARE OMITTED.



InNet Technologies, Inc.
<http://www.innet-tech.com>

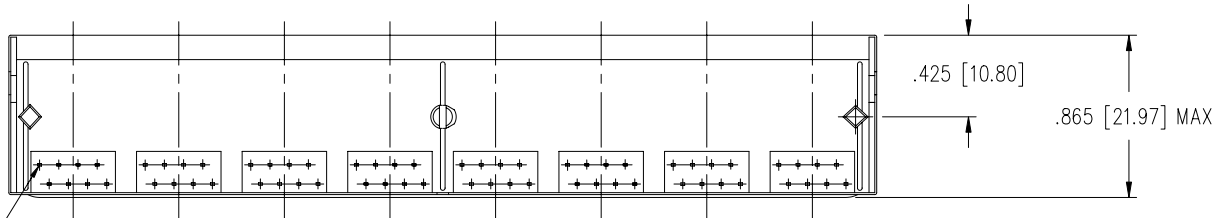
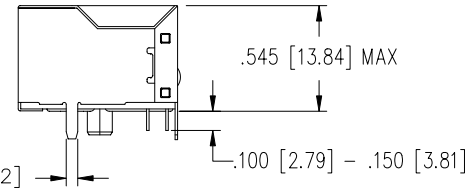
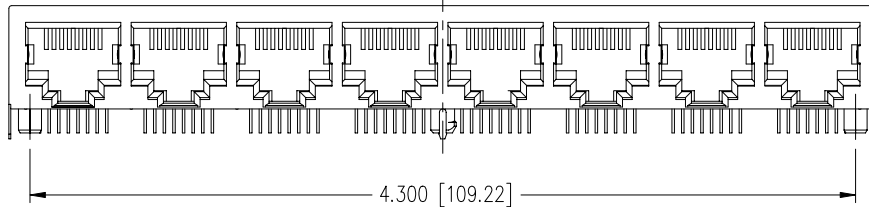
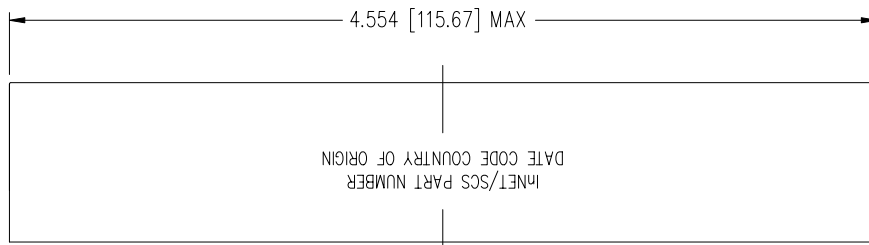


Stewart Connector Systems
<http://www.stewartconnector.com>

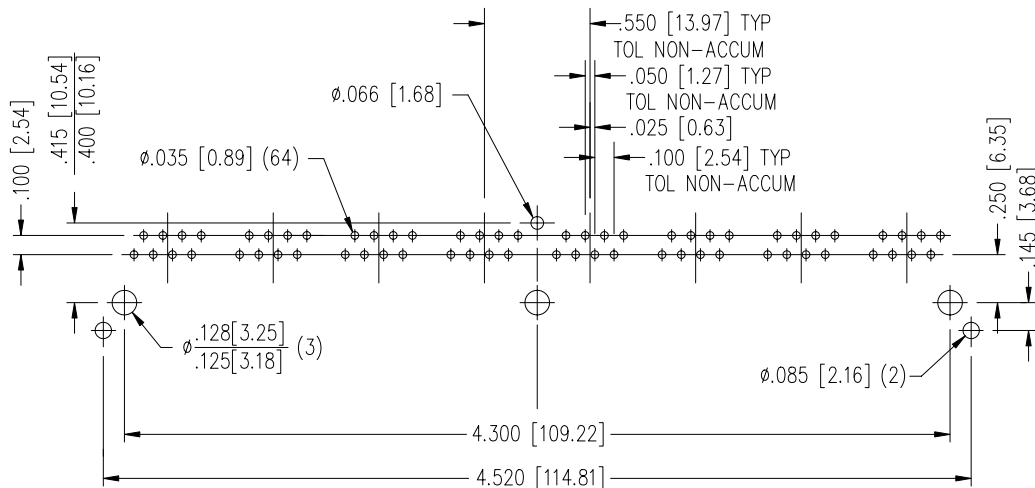
SHEET
1 OF 2

DRAWING NO.

SI-10199 REV. X2



PIN 1



P.C.B. RECOMMENDED HOLE LAYOUT
SEEN FROM COMPONENT SIDE

TOLERANCE \pm .003 [0.08] UNLESS OTHERWISE SPECIFIED

NOTES:

Case Material: Polyester, Black, UL94-V0

Jack Leads: 50 microinch selective gold plate

Pins: 500 microinch solder plate

Pins not electrically connected maybe omitted.

See electrical drawing for omitted pins.



InNet Technologies, Inc.
<http://www.innet-tech.com>



Stewart Connector Systems
<http://www.stewartconnector.com>

SHEET
2 OF 2

DRAWING NO.

SI-10199 REV. 02