

Supply Monitoring Relay Type - BDP1414F4

The BDP1414F4 supply monitoring relay provides detection of under-voltage, reverse sequence and imbalanced supply faults on a 3 phase system.

The under-voltage trip level is fixed at 75% of the nominal supply voltage.

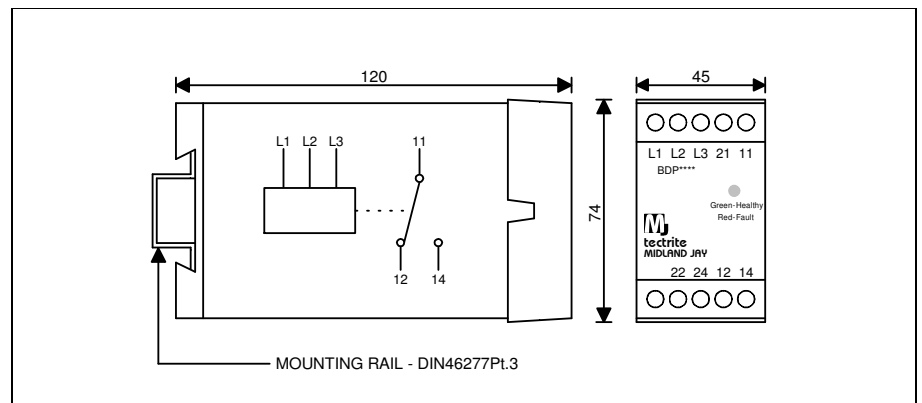
The phase imbalance trip level is fixed at 35% of the nominal phase voltage.

A fixed trip delay of 0.5 seconds is included to help prevent nuisance tripping.

A dual colour LED indicates the output status of the unit. When illuminated green the supply is healthy and the output relay is energised. If a supply fault is detected the LED will change colour to red and the output relay will release. When the fault has cleared the unit will reset automatically.

Supply to the unit should be via either 1 amp H.R.C. fuses or a 1 amp M.C.B.

Supply voltage:	200Vac 3 phase (nominal)
Frequency:	400Hz
Undervoltage:	75% of nominal supply voltage
Phase imbalance:	35% of nominal phase voltage
Phase rotation:	Sensitive
Trip delay time:	0.5 seconds
Relay contacts:	Single-pole changeover
Contact rating:	250Vac 3A ($\cos\phi = 1$) 250Vac 1A ($\cos\phi = 0.4$)
Isolation voltage:	2kV ac for 1 minute
Power consumption:	Less than 5VA
Temperature range:	-10°C to +60°C
Construction:	Din rail mounted housing to IP20
Weight:	0.35Kg



BDP1414F4/04/16