

MATERIALS:

*PIN: COPPER.NICKEL PLATED

*HOUSING: BAKELITE.

*BODY:ZINC.NICKEL PLATED.

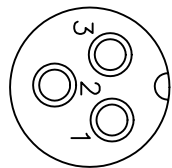
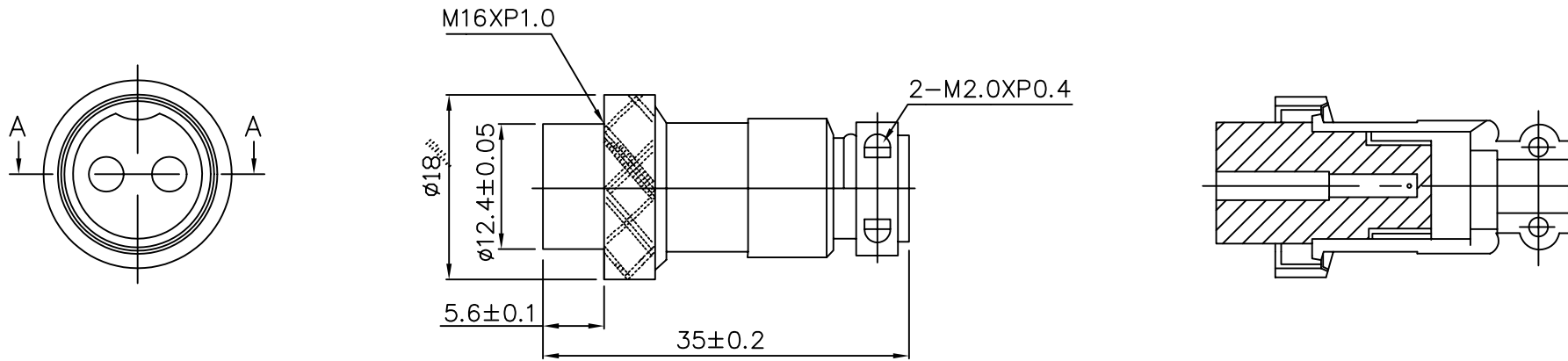
ELECTRIC CHARACTER

Rated current: 5A 125V

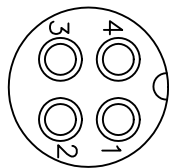
Operation Limit Voltage: 200V AC

Insulation Resistance: 100M OHM Min. at DC 500V

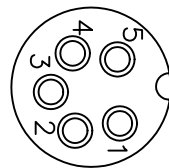
Contact Resistance: 10m OHM Max. at DC 1A



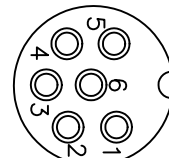
3P



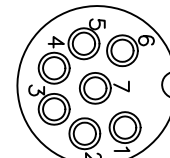
4P



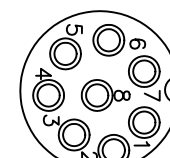
5P



6P



7P



8P

MORETHANALL
CONNECTORS
ASSEMBLIES

焯倫有限公司

PART NO. XLR-SA-xx

DWG NO. XLR-SA-xx

FILE NO.

UNIT / mm

SCALE 1:1

APPROVED BY CY

DRAWING BY

PROJECTION

TOLERANCES ARE

.X
.XX
.XXX
AWG

DESCRIPTION:

AREA

REVISIONS

HK

DATE