

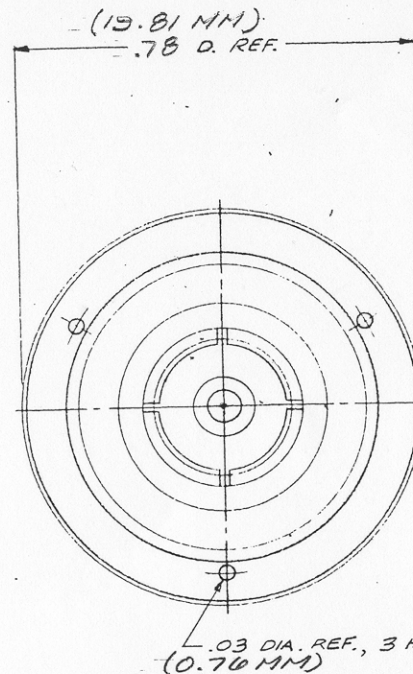
STAMP: KINGS KN-59-57

NOTES:

1. FOR USE WITH RG-115 A/U CABLE.
2. FOR CABLING INSTRUCTIONS SEE CP-213 A.
3. FOR CABLE TRIMMING USE KTJ-22 & KTD-81.
4. FOR FORMING USE DIE SIZE 04.

UNLESS OTHERWISE SPECIFIED:

- | | |
|---|---|
| <ol style="list-style-type: none"> 1. TOLERANCES:
FRACTIONS ± .010 DECIMALS ± .004 ANGLES ± 0° 30' 2. REMOVE ALL BURRS. BREAK SHARP EDGES .003 MAX. 3. NO FILLETS PERMITTED. 4. SURFACE ROUGHNESS 100 MICROINCHES RMS MAX. 5. ALL DIMENSIONS PRIOR TO PLATING. | <ol style="list-style-type: none"> 1. TOLERANCES:
FRACTIONS ± .010 DECIMALS ± .004 ANGLES ± 0° 30' 2. REMOVE ALL BURRS. BREAK SHARP EDGES .003 MAX. 3. NO FILLETS PERMITTED. 4. SURFACE ROUGHNESS 100 MICROINCHES RMS MAX. 5. ALL DIMENSIONS PRIOR TO PLATING. |
|---|---|



S-D

KN-59-57

REVISIONS	
ISSUE	CHANGES
1	CN 2874C 211 JAN 65
2	CN 5848A J.M. 20 APR 68
3	CN 10446A WLA 20 NOV 71
4	CN 14715A JL 15 AUG 75
5	CN 17326E NM 15 JUN 77
6	CN 17438E GA 27 JUN 77
7	CN 18390C MJB 16 JUN 78
8	CN 26215 D EAT 27 JUN 84

S-D

S-D

14	1	INSULATOR	G-39-01-9-M99
13	1	K-GRIP SLEEVE	S-89-24-2-MCT
12	1	COUPLING NUT	
11	1	N CAPTIVE CONTACT M	I-1168-1MA9
10	1	CONTACT	
9	1	GASKET	
8	1	INSULATOR	I-3944-1M99
7	1	C-RING	
6	1	BODY	
5	1	WASHER	G-39-01-5-MCT
4	1	K-GRIP	S-89-46-1-MCT
3	1	GASKET	571-3-M99
2	1	GLAND	S-89-35-3-MCT
1	1	CLAMP NUT	S-89-35-5-MCT
ITEM	REQ'D	DESCRIPTION	DWG. No.

REF:

FINISH

SPEC. KER 10004

MATL.

SPEC.

N PLUG

DRAWN PM

DATE 28 SEP 63

APPR. PETE

DATE 27 SEP 63

KINGS ELECTRONICS
40 MARBLEDALE ROAD
TUCKAHOE, N. Y.

KN-59-57