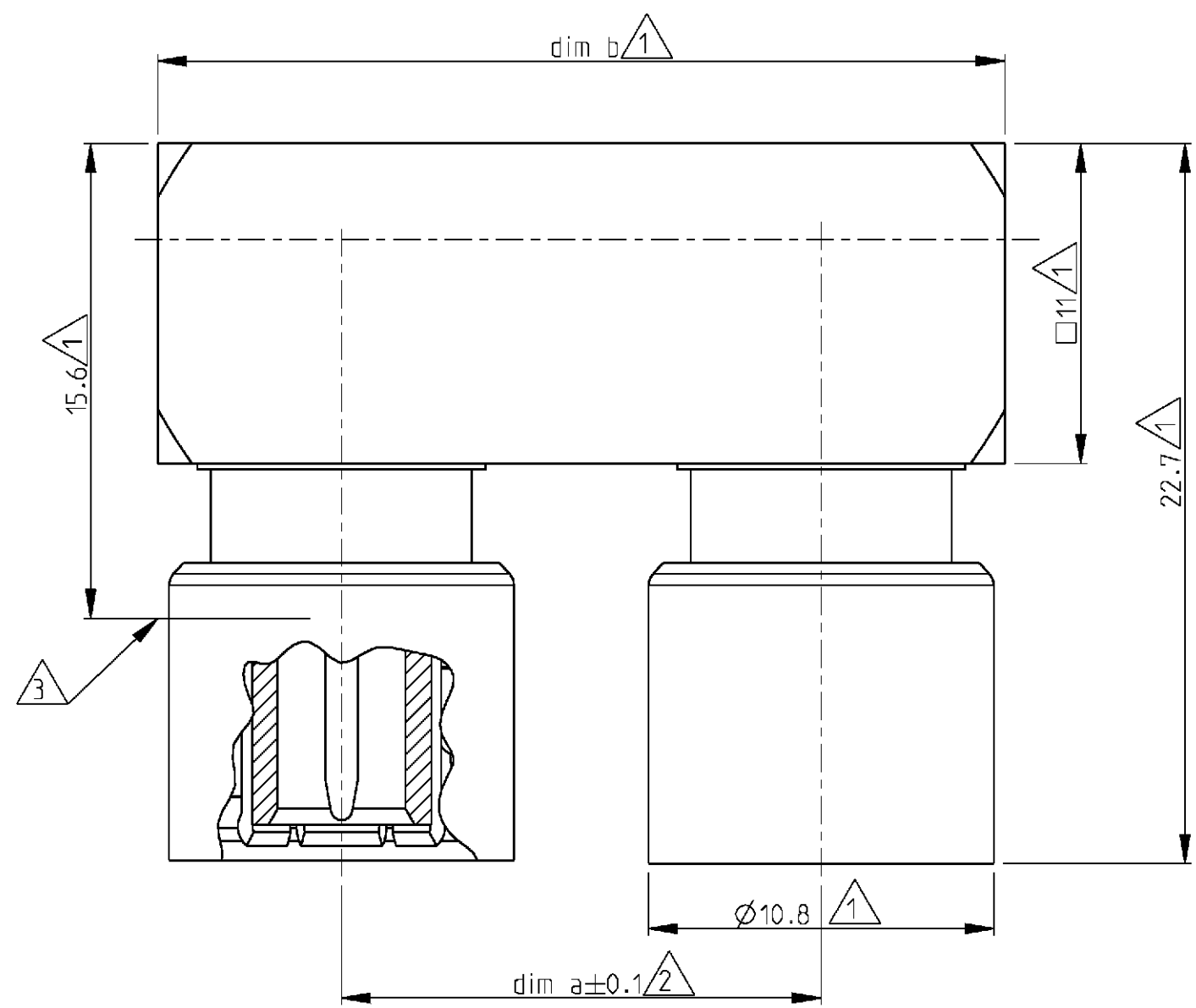


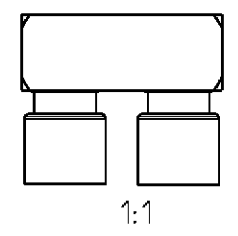
THIS DRAWING IS UNPUBLISHED. RELEASED FOR PUBLICATION 2000
 © COPYRIGHT 2000 BY TYCO ELECTRONICS CORPORATION. ALL RIGHTS RESERVED.

LOC	DIST	REVISIONS			
P	LTR	DESCRIPTION	DATE	DWN	APVD
GW	-	A	-	05APR2001	BL KM
		A1	SR10-0190-01	09MAY2001	BL KM
		A2	SR10-0344-01	01AUG2001	BL KM



- 4) Mating face according to DIN 47295/CECC 22240.
- 3 Reference plane.
- 2 Installation dimension.
- 1 Maximum dimensions.

Old part number	Tyco part number	Description	Material	Plating	dim a	dim b
C42334-A81-A86	1393681-4	Outer conductor	CuBe	1 µm Au min in contact area	30	41.5
		Center conductor	CuSn6/CuBe	1 µm Au min in contact area		
		Dielectric	PEEK/PTFE	-		
C42334-A81-A84	1393681-3	Outer conductor	CuBe	1 µm Au min in contact area	15	26.5
		Center conductor	CuSn6/CuBe	1 µm Au min in contact area		
		Dielectric	PEEK/PTFE	-		



<small>THIS DRAWING IS A CONTROLLED DOCUMENT FOR TYCO ELECTRONICS CORPORATION. IT IS SUBJECT TO CHANGE AND THE CONTROLLING ENGINEERING ORGANIZATION SHOULD BE CONTACTED FOR THE LATEST REVISION.</small>		DWN 02APR2001 B. Lenvain		Tyco Electronics Oostkamp - Belgium	
DIMENSIONS: mm		TOLERANCES UNLESS OTHERWISE SPECIFIED:		NAME U-Link 1.6/5.6 75 ohm	
		0 PLC ± 1 PLC ± 2 PLC ± 3 PLC ± 4 PLC ± ANGLES ±		PRODUCT SPEC - APPLICATION SPEC - WEIGHT -	
MATERIAL -		FINISH -		SIZE A3 CAGE CODE 00779 DRAWING NO. C-1393681-3 RESTRICTED TO -	
CUSTOMER DRAWING				SCALE 5/1 SHEET 1 OF 1 REV A2	