

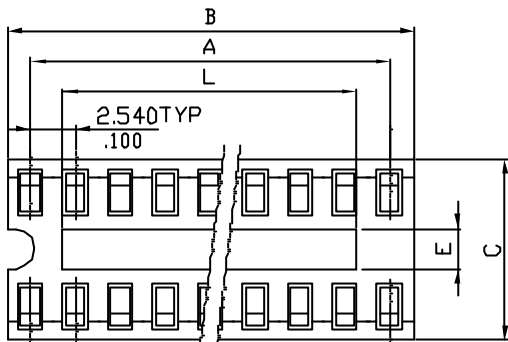
\*\*\* 8300 Series \*\*\*

Material :

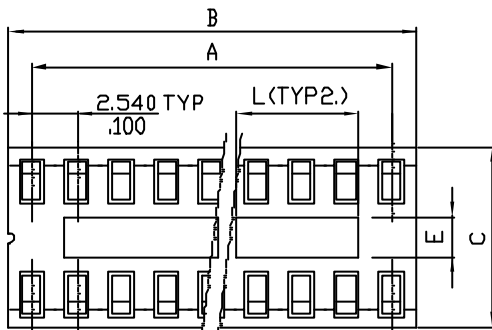
\* Insulator : UL 94V-0 PBT

\* Contact : Phosphor Bronze

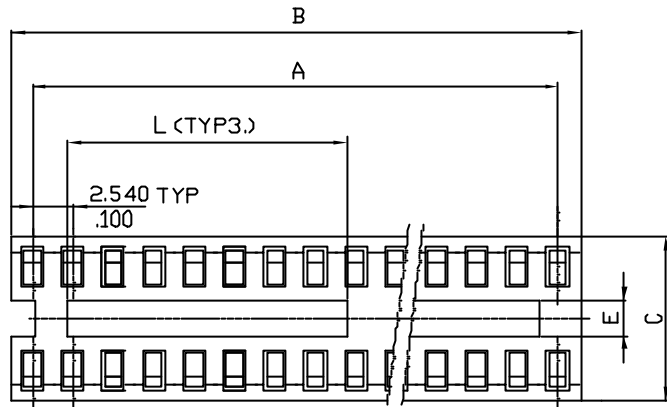
\* Plating : Tin plated  $120\mu$  min. over  $30\sim 50\mu$  nickel overall



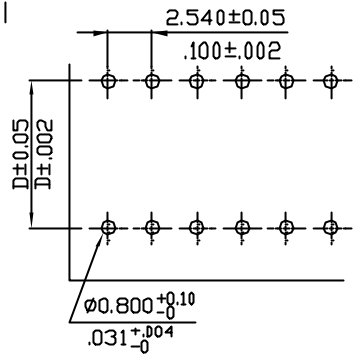
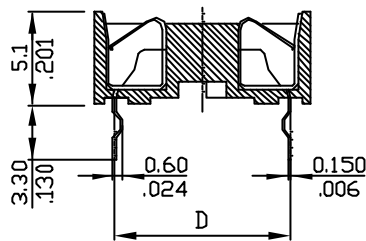
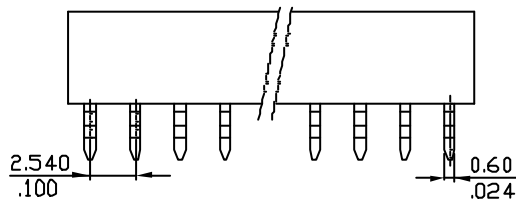
Typical 8 through 20 Circuits



Typical 24 through 40 Circuits



Typical 48 Circuits



RECOMMENDED HOLE PATTERN

LECO P/N	Dim.A	Dim.B	Dim.C	Dim.D	Dim.E	Dim.L
8300-06ATK0	5.080(.200)	7.5(.295)	9.9(.390)	7.620(.300)	2.2(.087)	1.6(.063)
8300-08ATK0	7.620(.300)	10.0(.394)	9.9(.390)	7.620(.300)	2.5(.098)	4.1(.161)
8300-14ATK0	15.240(.600)	17.6(.693)	9.9(.390)	7.620(.300)	2.5(.098)	11.7(.461)
8300-16ATK0	17.780(.700)	20.2(.795)	9.9(.390)	7.620(.300)	2.5(.098)	14.2(.559)
8300-18ATK0	20.320(.800)	22.7(.894)	9.9(.390)	7.620(.300)	2.5(.098)	16.8(.661)
8300-20ATK0	22.860(.900)	25.3(.996)	9.9(.390)	7.620(.300)	2.5(.098)	19.3(.760)
8300-24ATK0	27.940(1.100)	30.3(1.193)	17.6(.693)	15.240(.600)	10.2(.402)	11.3(.445)
8300-28ATK0	33.020(1.300)	35.4(1.394)	17.6(.693)	15.240(.600)	10.2(.402)	13.9(.547)
8300-40ATK0	48.260(1.900)	50.7(1.996)	17.6(.693)	15.240(.600)	10.2(.402)	21.5(.846)
8300-48ATK0	58.420(2.300)	60.8(2.394)	17.6(.693)	15.240(.600)	10.2(.402)	17.5(.689)

LECO CORPORATION

GENERAL TOLERANCE

X. ± X°. ± 2'

.X ±  $\frac{0.30}{.012}$  .X' ± 1'

.XX ±  $\frac{0.20}{.008}$  .XX' ± 0.5'

.XXX ±  $\frac{0.10}{.004}$  .XXX' ± 0.1'

APPROVED:

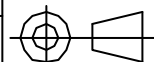
DATE:

CHECKED:

DATE:

DRAWN:

DATE:



UNITS

mm  
Inch

PART NO.:

8300-\*\*ATK0

TITLE:

SOCKET

DRAWING NO.:

830001S

SCALE SIZE SHEET REV.

~ A4 1/1 A

A	DWG REL		
REV.	ECO. NO.	CHG.	APP.