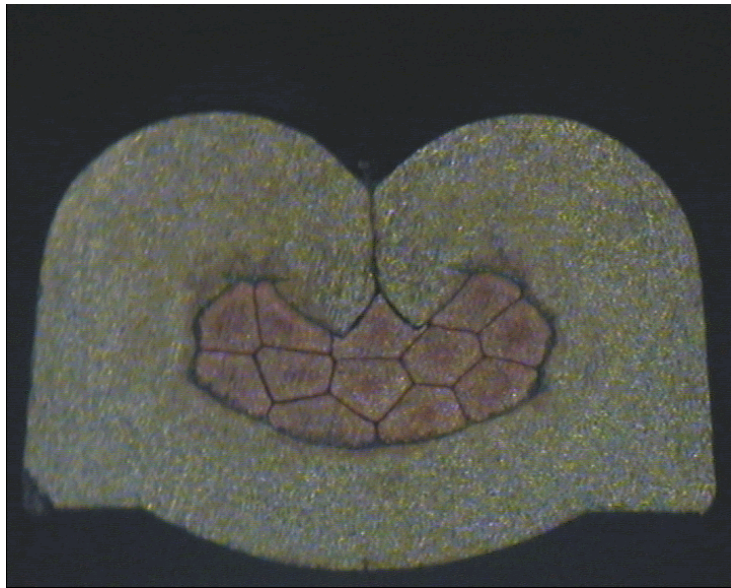


DELPHI PN 15342351



cable:

$0,35 \text{ mm}^2 = 12 \times 0,21 \text{ mm}$

crimp height:

1,10 mm

crimp width:

1,65 mm



cable:

$0,50 \text{ mm}^2 = 16 \times 0,21 \text{ mm}$

crimp height:

1,20 mm

crimp width:

1,70 mm