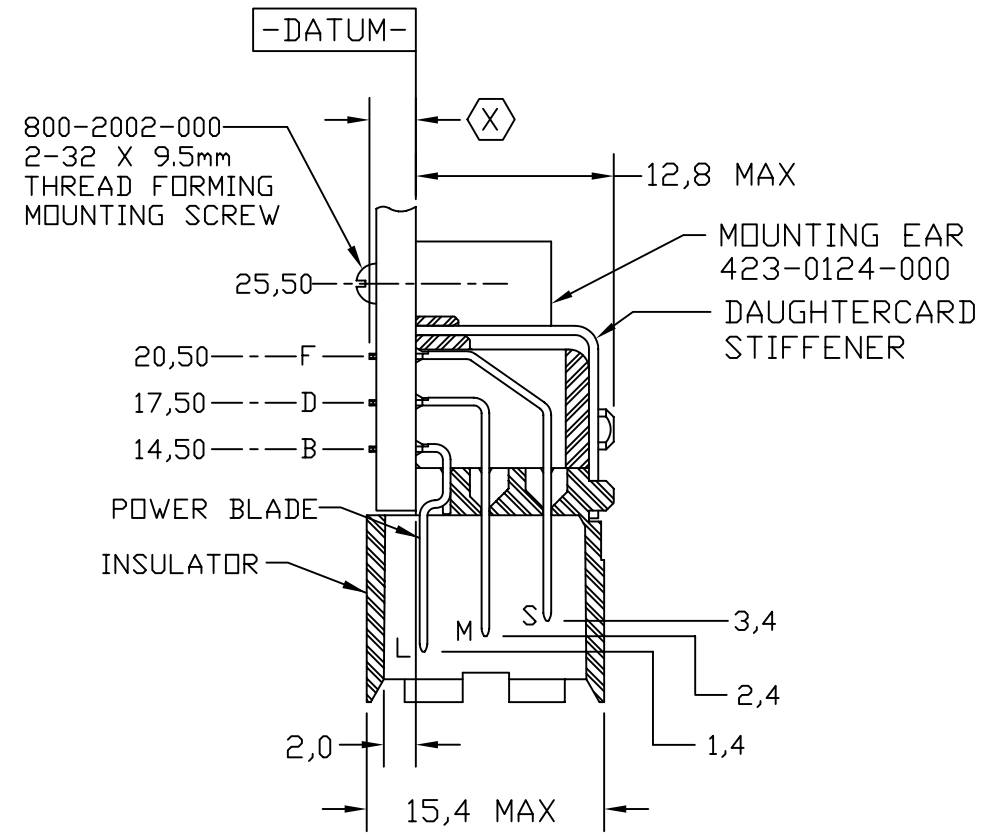
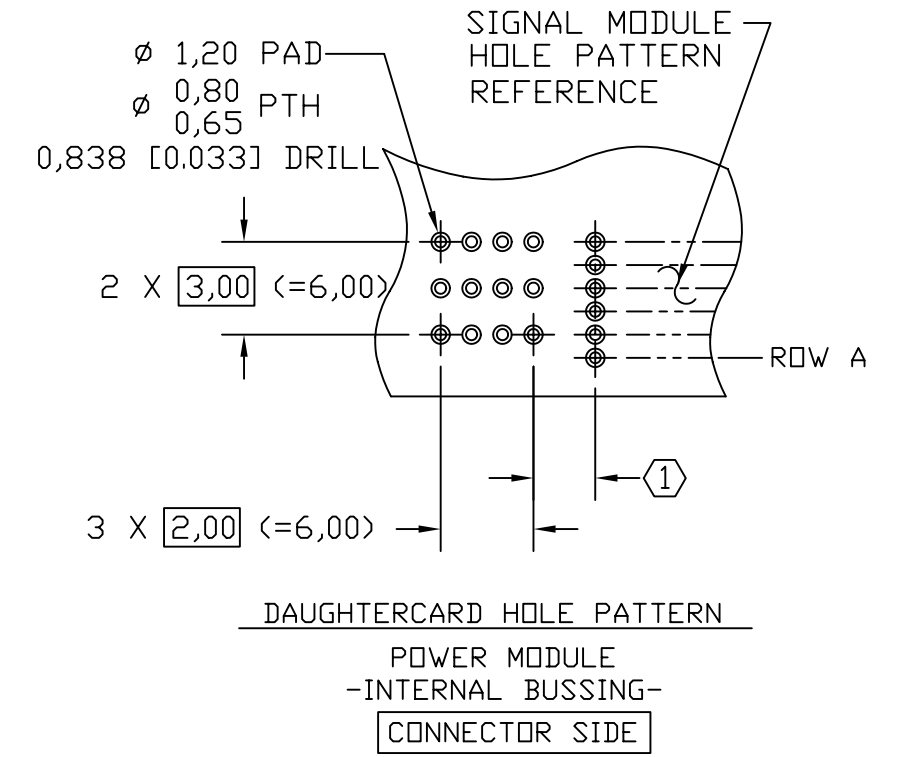
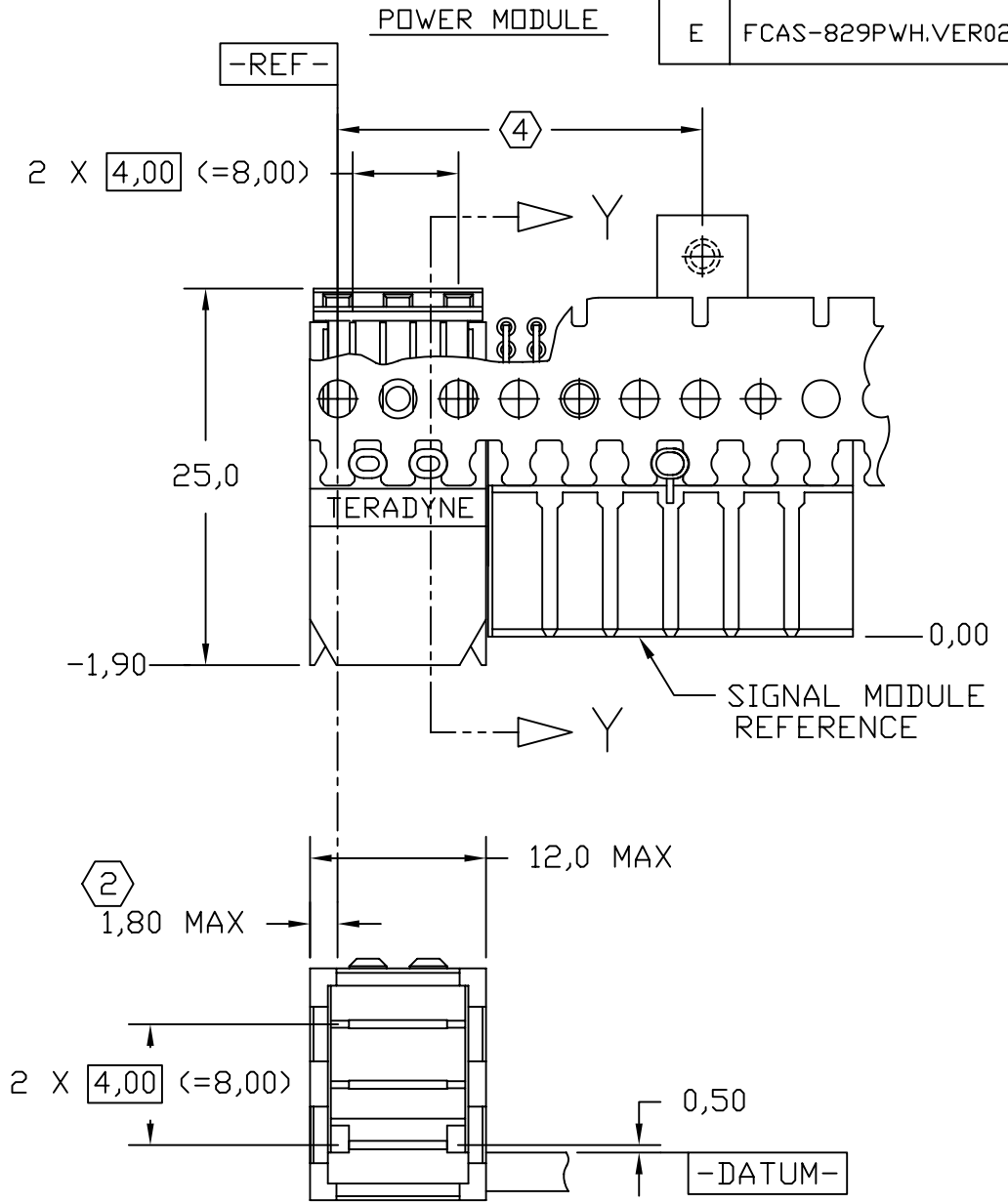
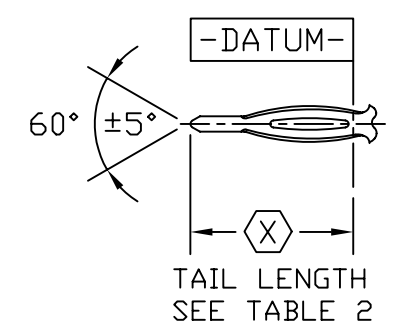


REV	SCR NO.	DESCRIPTION	BY	DATE	APPROVED
-	19732	NEW RELEASE	JV	7/29/96	D.Provencher
A	22563	RELEASED INTO CMS	DLS	10/15/97	L.McMAHON
B	40139	ADDED 5226-5236, DELETED VIEWS	SG	10/04/02	MUZZEY
C	MHEZ-5PXLJL.VER01	ADDED 5237-5238	ED	08/08/03	HERNANDEZ
D	MLEE-6K3PYK.VER01	UPDATE DRAWING FORMAT	ML	01/18/06	C.SAMMIS
E	FCAS-829PWH.VER02	ADDED TABLE III AND PART NUMBER TREE	HCL -MH	03/26/10	F.CARDENAS



SECTION Y-Y



TOLERANCES	DWN 02/24/96 J,VARHEGY
.00	± 0.25
.000	± 0.13
.0000	± -
ANGLES	± -
	CHK 7/29/96 D.B.P.
	APVD 7/29/96 D.B.P.

UNLESS OTHERWISE SPECIFIED DIMENSIONS ARE IN INCHES

CUSTOMER USE DRAWING

INTERPRET PER ASME Y14.5M

CODE IDENT 31413

Amphenol TCS
A Division of Amphenol Corporation
200 Innovative Way, suite 201, Nashua, NH. 03062 (603) 879-3000

TITLE: DAUGHTERCARD PRESS FIT POWER MODULE ASSEMBLY HDM CONNECTOR

PART NO. SEE TABLE 1

DRAWING NO. C-437-5220-500

SIZE B SCALE 2/1 SHEET 1 OF 2

DWG NO. C-437-5220-500 SH 1 REV E

REV	SCR NO.	DESCRIPTION	BY	DATE	APPROVED
		SEE SHEET 1			

TABLE 1

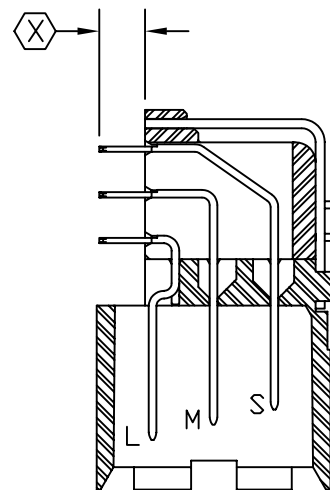
PART NUMBER (X)	P/N REV	TYPE
437-5218-XXX	-	LLS
437-5219-XXX	-	LMS
437-5220-XXX	-	LSS
437-5222-XXX	-	SLS
437-5223-XXX	-	LML
437-5224-XXX	-	MML
437-5225-XXX	-	MLM
437-5226-XXX	-	LLL
437-5227-XXX	-	MMM
437-5228-XXX	-	SSS
437-5229-XXX	-	LLM
437-5230-XXX	-	SMS
437-5231-XXX	-	LMM
437-5232-XXX	-	MSS
437-5233-XXX	-	SSM
437-5234-XXX	-	MMS
437-5235-XXX	-	LS-
437-5236-XXX	-	SS-
437-5237-XXX	-	M-M
437-5238-XXX	-	SML

TABLE 3

PART NUMBER (X)	P/N REV	TYPE
437-5418-XXX	-	LLS
437-5419-XXX	-	LMS
437-5420-XXX	-	LSS
437-5422-XXX	-	SLS
437-5423-XXX	-	LML
437-5424-XXX	-	MML
437-5425-XXX	-	MLM
437-5426-XXX	-	LLL
437-5427-XXX	-	MMM
437-5428-XXX	-	SSS
437-5429-XXX	-	LLM
437-5430-XXX	-	SMS
437-5431-XXX	-	LMM
437-5432-XXX	-	MSS
437-5433-XXX	-	SSM
437-5434-XXX	-	MMS
437-5435-XXX	-	LS-
437-5436-XXX	-	SS-
437-5437-XXX	-	M-M
437-5438-XXX	-	SML

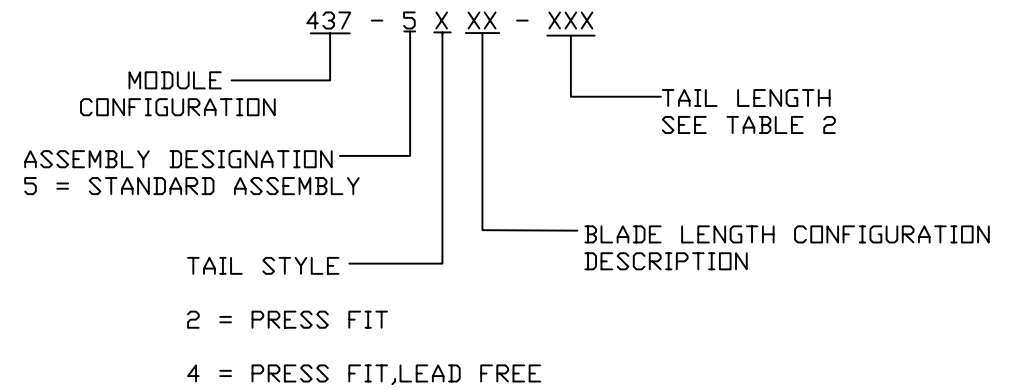
TABLE 2

(X)	TAIL LENGTH
300	3,00 ±0,25
350	3,50 ±0,25
400	4,00 ±0,25



437-5X19-XXX (X)
TYPE LMS

PART NUMBER CONFIGURATION



6. DIMENSIONS AND TOLERANCES ARE IN MILLIMETERS AND INTENDED FOR LAYOUT AND INFORMATION PURPOSES ONLY.

5. FOR MATERIALS, FINISHES, AND PART NUMBERING REFERENCE HDM PRODUCT SPECIFICATION TB2012.

(4) PLACE MOUNTING EAR ON DATUM [-REF-] OR MULTIPLES OF 4mm.

3. DIMENSIONS AND TOLERANCES SUBJECT TO CHANGE WITHOUT NOTICE.

(2) USE 2.0mm NOMINAL FOR DAUGHTERCARD LAYOUT.

NOTES: (1) THIS DIMENSION MUST BE A MULTIPLE OF 4.00mm.

TOLERANCES		DWN 02/24/96 J,VARHEGY	Amphenol TCS A Division of Amphenol Corporation 200 Innovative Way, suite 201, Nashua, NH. 03062 (603) 879-3000
.00	± 0.25	CHK 7/29/96 D.B.P.	
.000	± 0.13	APVD 7/29/96 D.B.P.	
.0000	± -		
ANGLES	± -		TITLE DAUGHTERCARD PRESS FIT POWER MODULE ASSEMBLY HDM CONNECTOR
UNLESS OTHERWISE SPECIFIED DIMENSIONS ARE IN INCHES			PART NO. SEE TABLE 1
CUSTOMER USE DRAWING			REV
INTERPRET PER ASME Y14.5M			DRAWING NO. C-437-5220-500
			REV E
CODE IDENT 31413	SIZE B	SCALE 2/1	SHEET 2 OF 2

DWG NO. C-437-5220-500 SH 2 REV E