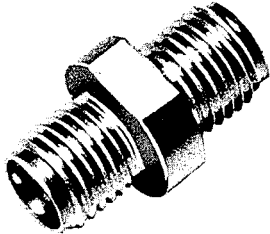


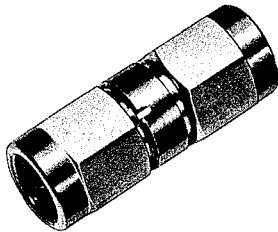
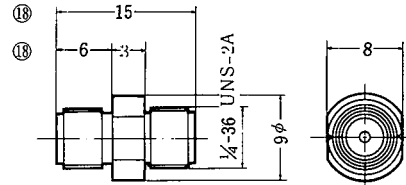
Adapters HRM-500~599

The following are the adapters connecting between the coupling parts of the HRM series:



| HRS No. | Part No. |
|----------------|----------|
| * CL323-0029-0 | HRM-501 |
| CL323-0156-8 | HRM-501S |

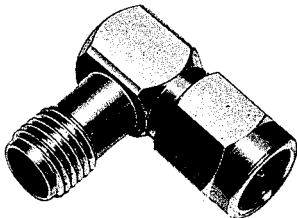
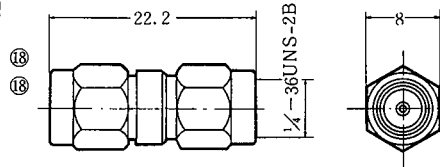
Female-female adapters
Shells are made of stainless steel and are of the integral type.



| HRS No. | Part No. |
|-------------------|-----------------|
| * CL323-0030-0-09 | *HRM-502(09) |
| CL323-0157-0 | *HRM-502S |
| CL323-0126-7-09 | **HRM-502-1(09) |
| CL323-0123-9 | **HRM-502-1S |

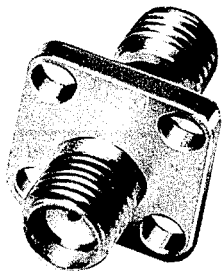
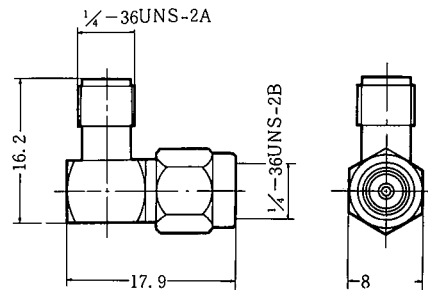
Male-male adapters

* Shells are made of stainless steel and are split into two segments.
** Shells are made of stainless steel and are of the integral type.



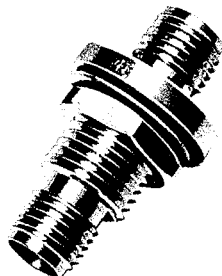
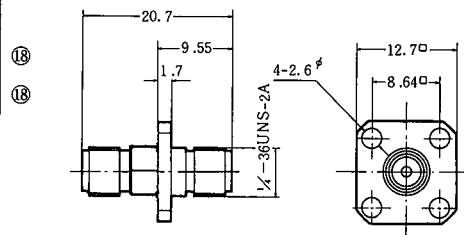
| HRS No. | Part No. |
|-------------------|-------------|
| * CL323-0031-2-09 | HRM-503(09) |
| * CL323-0112-2 | HRM-503S |

Male-female L-type adapters



| HRS No. | Part No. |
|-------------------|-------------|
| * CL323-0034-0-09 | HRM-513(09) |
| * CL323-0657-3 | HRM-513SV |

Female-female panel adapters
Shells are made of stainless steel and are of the integral type



| HRS No. | Part No. |
|--------------|------------|
| CL323-0240-2 | HRM-500-1S |

Nut-fastened-type panel adapters

