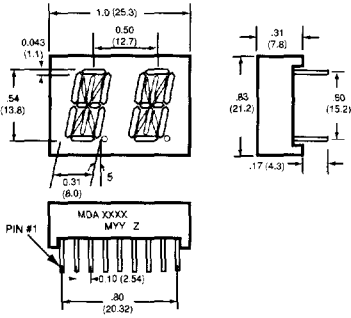


ALPHANUMERIC SEGMENTED DISPLAYS

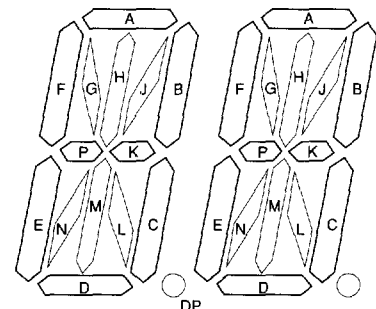
0.54" Alphanumeric 14 Segment Dual Digit Stick Displays (Direct Drive)											
Part Number	Description	Source Color	Wave-length λ (nm)	Segment Color	Face Color	Forward Voltage V_F (V)		Luminous Intensity I_V (μ cd)			
						typ	max	min	typ		
MDA6110C	Common Anode; RHDP		697	White	Grey	2.1	2.6	500	1400		
MDA6140C	Common Cathode; RHDP										
MDA6310C	Common Anode; RHDP	Yellow	585	White	Grey	2.1	2.8	1000	4000		
MDA6340C	Common Cathode; RHDP										
MDA6410C	Common Anode; RHDP		570	White	Grey	2.1	2.8	750	5000		
MDA6440C	Common Cathode; RHDP										
MDA6910C	Common Anode; RHDP		635	White	Grey	2.0	2.8	1000	4000		
MDA6940C	Common Cathode; RHDP										



	Part Number	Notes
<p style="text-align: center;">MDA6X10C</p>	MDA6110C	4, 33, 34
<p style="text-align: center;">MDA6X40C</p>	MDA6140C	4, 33, 34
	MDA6310C	4, 33, 34
	MDA6340C	4, 33, 34
	MDA6410C	4, 33, 34
	MDA6440C	4, 33, 34
	MDA6910C	4, 33, 34
	MDA6940C	4, 33, 34

Notes:

- 4. V_F & I_V @ $I_F = 20$ mA
- 33. MDAXXX represents the product part number, MYY is the date code, Z refers to the light intensity category for the product.
- 34. See font detail on right.
- 35. See font detail on page 142.
HER = High Efficiency Red.



ALPHANUMERIC SEGMENTED DISPLAYS

0.54" Alphanumeric 14 Segment Dual Digit Stick Displays (Multiplex)									
Part Number	Description	Source Color	Wave-length λ (nm)	Segment Color	Face Color	Forward Voltage V_F (V)		Luminous Intensity I_V (μ cd)	
						typ	max	min	typ
MDA6141C	Common Cathode; RHDP		697	White	Grey	2.1	2.6	500	1400
MDA6341C	Common Cathode; RHDP	Yellow	585	White	Grey	2.1	2.8	1000	4000
MDA6441C	Common Cathode; RHDP		570	White	Grey	2.1	2.8	750	5000
MDA6941C	Common Cathode; RHDP		635	White	Grey	2.0	2.8	1000	4000

