

SMZ(TYPE 43)



The SMZ (TYPE 43) Series originally are designed for use in Type 43 Digital Distribution Frames (DDF) of BT (British Telecom), meet the requirements of BS 9210 F0022 (British Standard). Its special locking feature which prevents accidental disconnection make the system more reliable. They are now widely used in telecommunications switching equipment. There are mainly three kinds, normal standard STD (space between 12.7mm), high density HDC (space between 10mm), ultra high density UHDC (space between 9mm).

TECHNICAL CHARACTERISTICS

Environmental

Temperature range -40~+100 °C

Electrical Characteristics

| | |
|---------------------------------|---|
| Characteristic impedance | 75 Ω |
| Frequency range | 0-3GHz |
| Working voltage | 500V |
| Insulation resistance | $\geq 5000M\Omega$ |
| Dielectric withstanding voltage | 1500V |
| Contact resistance | Center contact $\leq 5m\Omega$, Outer contact: $\leq 1m\Omega$ |
| VSWR | ≤ 1.20 (Straight) ≤ 1.25 (Right angle) |

Material and Plating

| | |
|------------------------|-------------------------------------|
| Body | Brass, gold/nickel plated |
| Spring contacts | Phosphor bronze, gold plated |
| Male center contacts | Brass, gold plated |
| Female center contacts | Beryllium copper, gold plated |
| Insulators | PTFE |
| Crimp ferrules | Copper alloy, gold or nickel plated |

Mechanical Characteristics

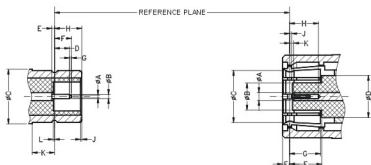
Durability 250 cycles

SMZ(TYPE 43)

INTERFACE MATING DIMENSIONS

| | PLUG (mm) | |
|---|-----------|---------|
| | Minimum | Maximum |
| A | - | 0.25 |
| B | 0.48 | 0.53 |
| C | - | 7.94 |
| D | 1.32 | - |
| E | - | 0.18 |
| F | - | 2.97 |
| G | 0.25 | - |
| H | 3.33 | 3.58 |
| J | 0.00 | - |
| K | 2.01 | - |
| L | - | 0.18 |

| | JACK (mm) | |
|---|-----------|---------|
| | Minimum | Maximum |
| A | - | 0.95 |
| B | - | 3.33 |
| C | 6.52 | - |
| D | 5.60 | 5.60 |
| E | - | 2.36 |
| F | 3.58 | - |
| G | 3.58 | - |
| H | 2.97 | - |
| J | 0.18 | - |
| K | 0.18 | 0.94 |

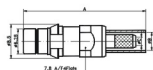


JACK

PLUG

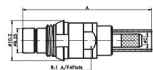
1. FLEXIBLE CABLE CONNECTORS

HDC Straight Cable Jack, Crimp



| Part Number | GB Type | Cable Group | Remarks |
|-------------|---------------|-------------|----------------------|
| SMZ1112004 | SMZ-75J3 5DYQ | BT3002 | A=33.0, B=4.4, C=2.1 |
| SMZ1112005 | SMZ-75J6 5DYQ | BT2003 | A=36.0, B=7.0, C=3.8 |

STD Straight Cable Jack, Crimp

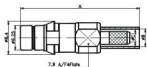


| | | | |
|------------|------------------|--------|----------------------|
| SMZ1112006 | SMZ(L)-75J3 5DYQ | BT3002 | A=34.0, B=4.4, C=2.1 |
| SMZ1112007 | SMZ(L)-75J6 5DYQ | BT2003 | A=37.0, B=7.0, C=3.8 |

SMZ(TYPE 43)

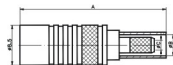
1. FLEXIBLE CABLE CONNECTORS

HDC Straight Cable Jack, M01



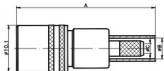
| Part Number | GB Type | Cable Group | Remarks |
|-------------|--------------|-------------|----------------------|
| SMZ2112010 | SMZ-75J3.5DY | BT3002 | A=30.4, B=4.4, C=2.1 |
| SMZ2112008 | SMZ-75J4.5Y | BT2001 | A=30.4, B=4.8, C=2.6 |
| SMZ2112009 | SMZ-75J4.5DY | BT2002 | A=30.4, B=5.5, C=2.6 |
| SMZ2112014 | SMZ-75J6.5DY | BT2003 | A=33.4, B=7.0, C=3.8 |

UHDC Straight Cable Plug, M02



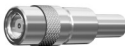
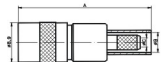
| | | | |
|------------|---------------|--------|----------------------|
| SMZ1212006 | SMZ-75K3.5DYA | BT3002 | A=31.1, B=4.4, C=2.1 |
| SMZ1212007 | SMZ-75K6.5DYA | BT2003 | A=34.1, B=7.0, C=3.8 |

STD Straight Cable Plug, M02



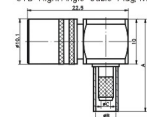
| | | | |
|------------|-----------------|--------|----------------------|
| SMZ1212017 | SMZ(L)-75K3.5DY | BT3002 | A=29.8, B=4.4, C=2.1 |
| SMZ1212016 | SMZ(L)-75K6.5DY | BT2003 | A=32.8, B=7.0, C=3.8 |

HDC Straight Cable Plug, M02



| | | | |
|------------|--------------|--------|----------------------|
| SMZ1212011 | SMZ-75K4.5Y | BT2001 | A=30.1, B=4.8, C=2.6 |
| SMZ1212012 | SMZ-75K4.5DY | BT2002 | A=30.1, B=5.5, C=2.6 |

STD Right Angle Cable Plug, M04



| | | | |
|------------|---------------|--------|----------------------|
| SMZ2212006 | SMZ-75KW3.5DY | BT3002 | A=21.0, B=4.4, C=2.1 |
| SMZ2212007 | SMZ-75KW6.5DY | BT2003 | A=24.0, B=7.0, C=3.8 |