

### TYPE CDF Discriminators



#### Description

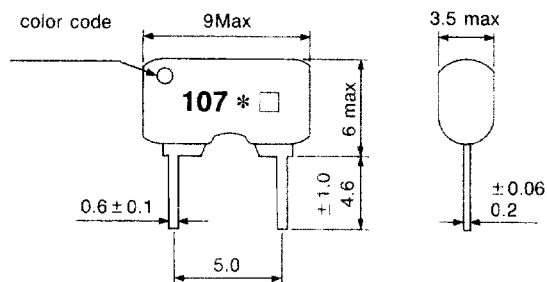
- May be used in combination with IF step filters to remove need for adjustment.

#### Features

- Compact and low profile (ideal for slimline sets)
- Low temperature coefficient for low dispersion and stable characteristics
- Independent terminal structure
- Can be supplied as kits with AM/FM filters

#### Applications

- Ideal for small sets, general purpose radios, and headphone stereos.
- CB transceivers



Unit: mm

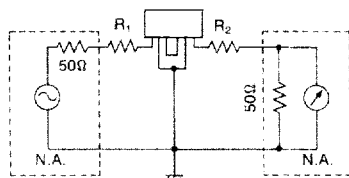
### STANDARD DISCRIMINATORS SELECTION GUIDE

#### TYPE CDF Discriminators

TOKO Part Number*	Center Frequency (F <sub>0</sub> )	(rank color code)	Audio Frequency Output Voltage	Distortion at F <sub>0</sub> ± 90KHz	3dB band width	Applicable IC*
CDF107B-A0-001C	10.70 ± 0.03MHz	(None)	40mV min.	1.0% max.	250KHz min.	CXA1019X

\* Ceramic discriminators are classified by exclusive IC numbers. Please ask for TOKO Part Number.

#### Test Circuit



#### Center Frequency:

Input frequency such that the potential between DC (-) and DC (+) in the test circuit is 0V.

#### Input Conditions:

MOD: 400Hz, DEV: 22.5KHz, INPUT: 90dBμ