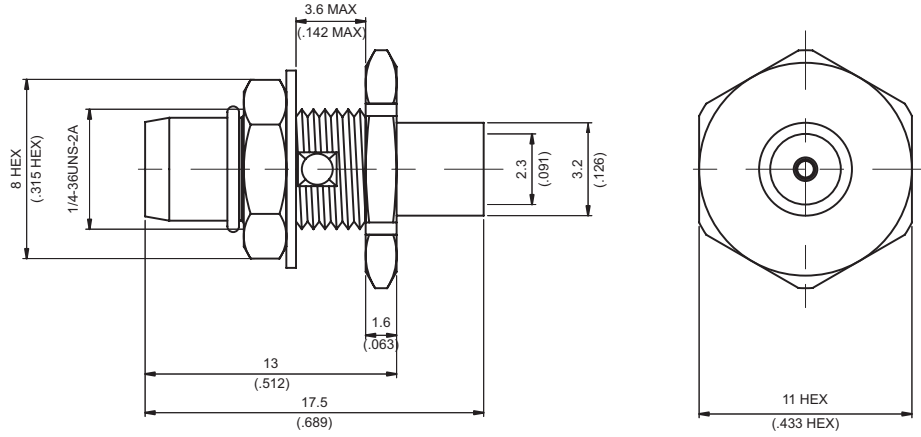
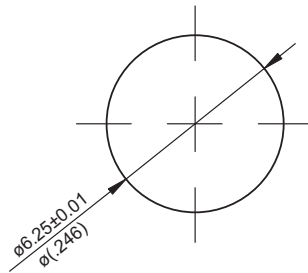


BMA3305-0085

BMA Plug Solder For Bulkhead



MOUNTING HOLE



Parts	Material	Plating (Micro-inch)
Contact Pin	Beryllium Copper	Gold 20 Over Nickel 50 Over Copper 50
Hex Nut	Brass	Gold 5 Over Nickel 50 Over Copper 50
Gasket	Silicon	
Lock Washer	Brass	Gold 5 Over Nickel 50 Over Copper 50
Insulator	Teflon	
Body	Brass	Gold 5 Over Nickel 50 Over Copper 50

Weight: 3.31 g

Suitable Cables: Semi-rigid.085

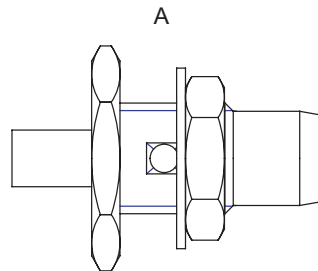
This part number complies with RoHS.

Notice: JYEBAO reserves the right to make modifications deemed appropriate.

CABLE ASSEMBLY INSTRUCTION

BMA3305-0085

JYE BAO CO., LTD.



BODY+HEX NUT
LOCK WASHER

DIAGRAM	ASSEMBLY INSTRUCTION
<p>A diagram of a cable with a length of 2.5 [0.98] inches being stripped. The stripped end is labeled 'SHARP'.</p>	<p>Step 1: STRIP AS SHOWN. Step 2: SHARP THAT PART ON CENTER CONDUCTOR.</p>
<p>A diagram showing the stripped cable being inserted into the connector body labeled 'A'.</p>	<p>Step 3: SLIDE CABLE INTO CONNECTOR BODY "A".</p>
<p>A detailed diagram of the cable in a soldering fixture. The fixture is labeled with parts: ST-009 (insert tool), ST-008 (soldering fixture), ST-011 (screw locator tool), and points X, T, and S.</p>	<p>Step 4: PUT PREPARED CABLE INTO SOLDERING FIXTURE "ST-008" AND LOCK IT. USE INSERT TOOL "ST-009" TO FIX THE CONNECTOR . Step 5: SCREW LOCATOR TOOL "ST-011" TO THE POSITION AS SHOWN IN "S". SOLDER IN "X" AND PUT EPOXY IN "T".</p>

This part number complies with RoHS.

Notice: JYEBAO reserves the right to make modifications deemed appropriate.