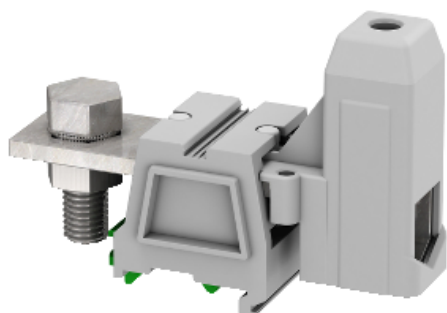




Price\* : 15.83 GBP



### Main

Range	Linery
Product name	Linery TR
Product or component type	Terminal block
Device short name	TRV
Accessory / separate part category	Connection accessory
Terminal block type	Passthrough
Terminal block level	1
Mounting mode	Clip-on
Nominal cross section	95 mm <sup>2</sup>
Length	114 mm
Colour	Grey
Quantity per set	Set of 10

### Complementary

Width	40 mm
Height	86 mm
Connections - terminals	1 x lug: upstream (M12) 1 x screw terminal: downstream (M12)
Number of connections	2
Connection position	Sideways
Number of measurement input	0
Cable cross section	25...95 mm <sup>2</sup> , solid 35...95 mm <sup>2</sup> , flexible without cable end
Tightening torque	25...30 N.m upstream 15...20 N.m downstream
Wire stripping length	29 mm
Tool type	Connection: screwdriver Disconnection: screwdriver

[Ue] rated operational voltage	1000 V conforming to EN/IEC 60947-7-1 600 V cURus 600 V CSA
[In] rated current	232 A conforming to EN/IEC 60947-7-1 230 A cURus 200 A CSA
Material	Polyamide 6/6: insulating case Copper alloy: connector and screw Copper alloy: commoning link Chromium-nickel steel: spring
Dielectric loss	0.01 at 1 MHz conforming to IEC 60250 0.01 at 1 MHz conforming to VDE 0303-T4
Dielectric constant	3.7 at 1 MHz
Resistivity	10000 M $\Omega$ .m conforming to IEC 60093 10000 M $\Omega$ .m conforming to VDE 0303-T30
Surface resistance	1000 G $\Omega$ conforming to IEC 60093 1000 G $\Omega$ conforming to VDE 0303-T30
Creep resistance	500 CTI (> 400 kV) conforming to IEC 60093 500 CTI (> 400 kV) conforming to VDE 0303-T30
Flame retardance	V0, thickness 0.8 mm conforming to UL 94
Range compatibility	Prisma G Prisma P Prisma PH Spacial
Product compatibility	Spacial enclosures

## Environment

Product certifications	GL CSA CURus EAC
Dielectric strength	1000 V conforming to IEC 60243-1
Ambient air temperature for operation	-40...130 °C conforming to IEC 60216-1 -40...130 °C conforming to VDE 0304-T21

## Offer Sustainability

Sustainable offer status	Green Premium product
REACH Regulation	<a href="#">REACH Declaration</a>
EU RoHS Directive	Pro-active compliance (Product out of EU RoHS legal scope) <a href="#">EU RoHS Declaration</a>
Mercury free	Yes
RoHS exemption information	<a href="#">Yes</a>
China RoHS Regulation	<a href="#">Download RoHS China Declaration</a> Product out of China RoHS scope. Substance declaration for your information
Environmental Disclosure	<a href="#">Product Environmental Profile</a>
Circularity Profile	No need of specific recycling operations
WEEE	The product must be disposed on European Union markets following specific waste collection and never end up in rubbish bins

## Contractual warranty

Warranty	18 months
----------	-----------