



T78041

LINEAR INTEGRATED CIRCUIT

VERTICAL DEFLECTION OUTPUT CIRCUIT

DESCRIPTION

The UTC **T78041** is a monolithic integrated IC and designed for high-definition TV and CRT displays in systems that use a bus control system signal-processing IC. It is intended to directly drive the deflection coil. Besides, It offers a maximum deflection current of 2.2A peak to peak to suitable for large diameter CRTs.

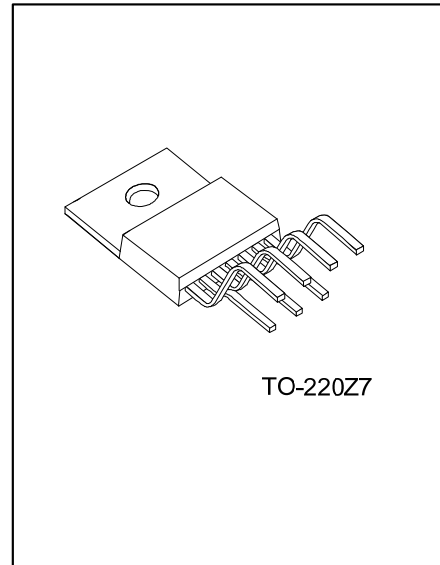
FEATURES

- * Low power operation achieved by using integrated charge pump circuit.
- * Vertical output circuit.
- * Thermal protection circuit.
- * Excellent crossover characteristics.
- * Supports DC coupling.

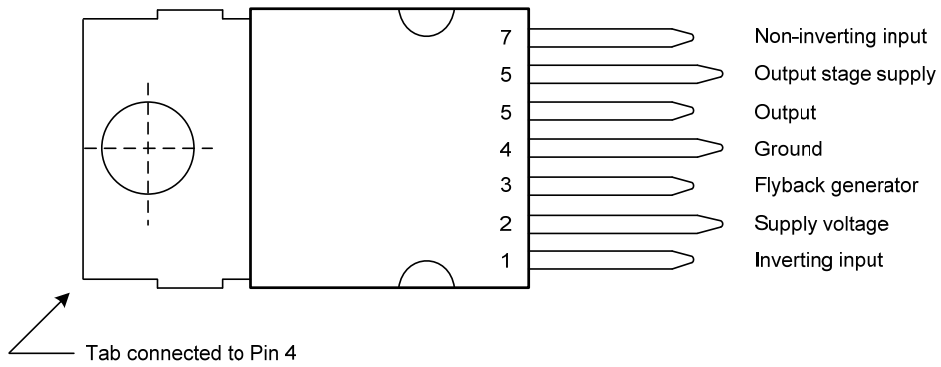
ORDERING INFORMATION

Ordering Number		Package	Packing
Lead Free	Halogen Free		
T78041L-TB7-T	T78041G-TB7-T	TO-220Z7	Tube

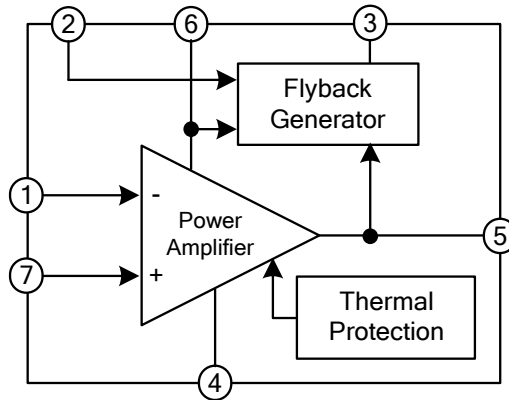
<p>T78041L-TB7-T</p> <p>(1)Packing Type (2)Package Type (3)Lead Free</p>	<p>(1) T: Tube (2) TB7: TO-220Z7 (3) G: Halogen Free, L: Lead Free</p>
--	--



■ PIN CONFIGURATIONS



■ BLOCK DIAGRAM



■ ABSOLUTE MAXIMUM RATINGS

PARAMETER	SYMBOL	RATINGS	UNIT
Supply Voltage (pin 2 to Pin4)	V_{CC2}	34	V
Output Supply Voltage (pin 6 to Pin4)	V_{CC6}	70	V
Output Peak Current	I_5	-1.5~1.5	A
Power Dissipation	P_D	9	W
Junction Temperature	T_J	150	°C
Operating Temperature	T_{OPR}	-20~+85	°C
Storage Temperature	T_{STG}	-40~+150	°C

Note: Absolute maximum ratings are those values beyond which the device could be permanently damaged. Absolute maximum ratings are stress ratings only and functional device operation is not implied.

■ THERMAL DATA

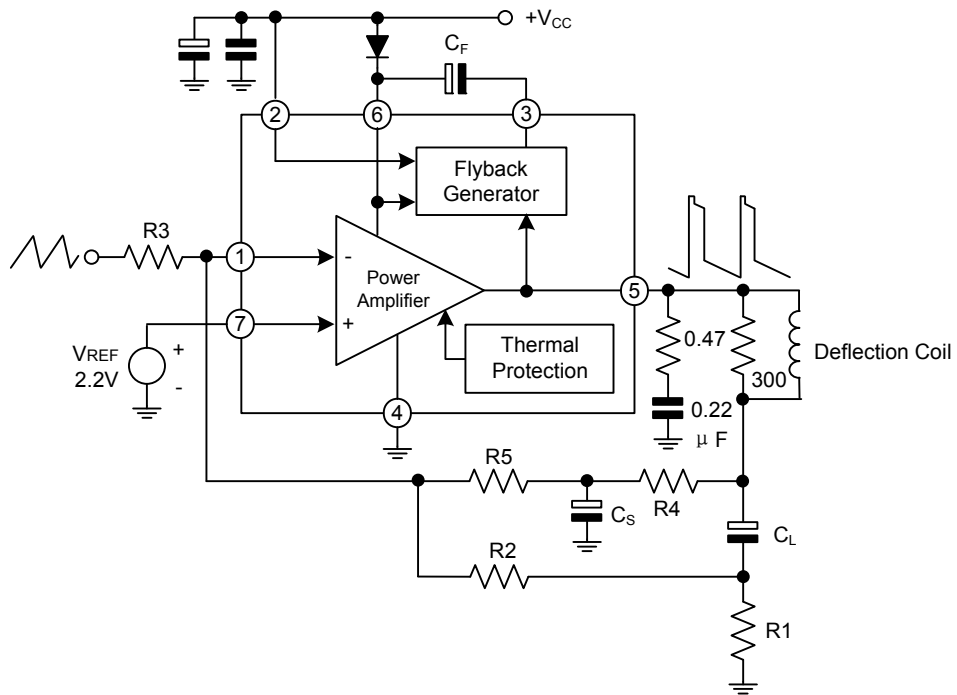
PARAMETER	SYMBOL	RATINGS	UNIT
Junction to Case	θ_{JC}	3.0	°C/W

■ ELECTRICAL CHARACTERISTICS ($T_A=25^\circ\text{C}$, $V_{CC}=24\text{V}$, unless otherwise specified)

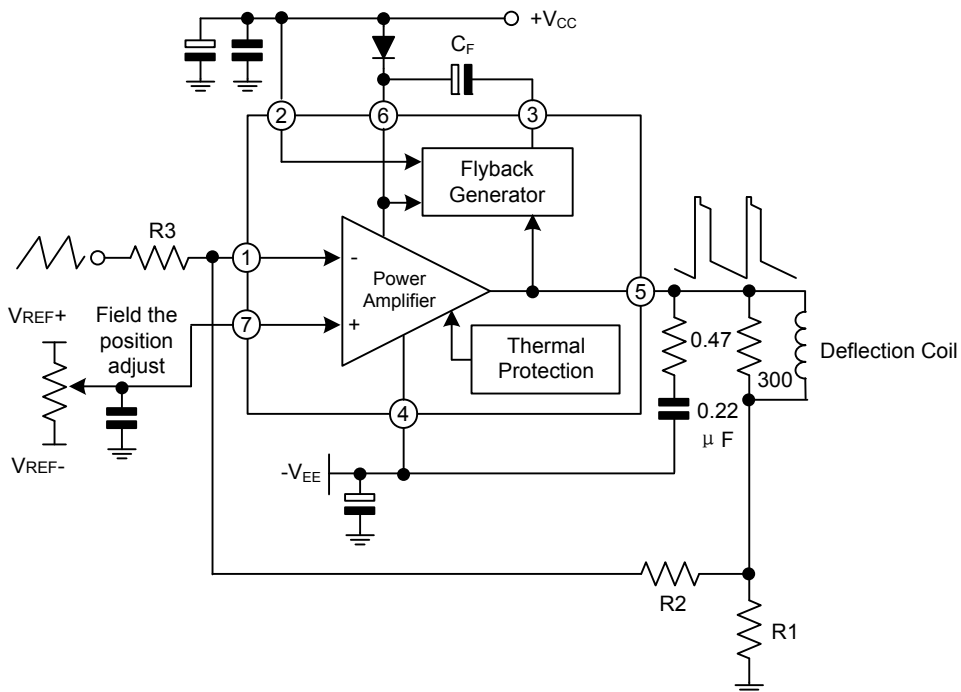
PARAMETER	SYMBOL	TEST CONDITIONS	MIN.	TYP.	MAX.	UNIT
Supply Voltage	V_{CC}		16	24	33	V
Quiescent Current	I_Q		35	-	65	mA
Recommend Biggest Peak to Peak Deflect Current	I_5				2.2	A
Output Saturated Voltage to GND	V_{5L}	$I_5=1.1\text{A}$			1.5	V
Output Saturated Voltage to Supply	V_{5H}	$I_5=-1.1\text{A}$			3.5	V
Pin 3 Saturation Voltage to GND	V_{3L}	$I_3=20\text{mA}$			1.8	V
Pin 3 Saturation Voltage to GND (Return to Sweep the Second Part)	$V_{3(2)}$	$I_3=-1.1\text{A}$			3.2	V
Output Middle Point Voltage	$V_{O(MID)}$		11	12	13	V
Thermal Shutdown Temperature				150		°C

APPLICATION CIRCUIT

AC APPLICATION (Single Power Supply)



DC APPLICATION (Double Power Supply)



UTC assumes no responsibility for equipment failures that result from using products at values that exceed, even momentarily, rated values (such as maximum ratings, operating condition ranges, or other parameters) listed in products specifications of any and all UTC products described or contained herein. UTC products are not designed for use in life support appliances, devices or systems where malfunction of these products can be reasonably expected to result in personal injury. Reproduction in whole or in part is prohibited without the prior written consent of the copyright owner. The information presented in this document does not form part of any quotation or contract, is believed to be accurate and reliable and may be changed without notice.