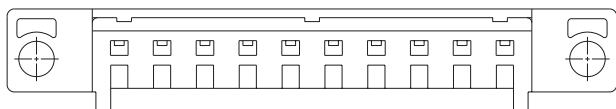
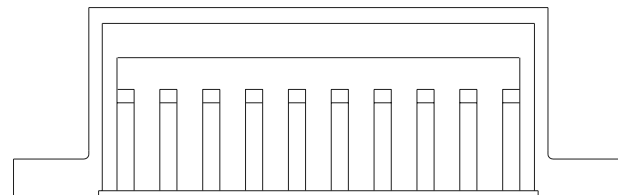
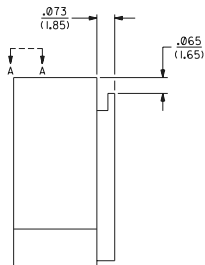
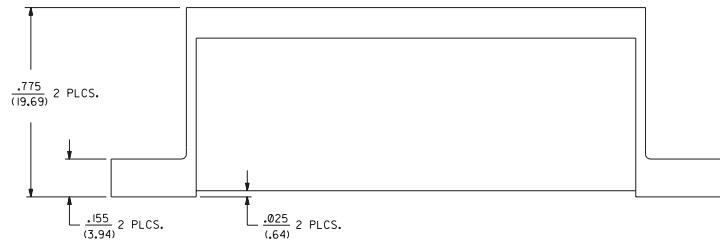


VIEW A-A



- NOTES:**
- △ THESE HOUSINGS ARE FOR USE WITH THE 1457-• TERMINALS AND MAY BE SUBDIVIDED BY USING THE 1461-K KEY.
  - △ THE HOUSINGS ARE ONLY AVAILABLE IN 5, 10, 15, AND 20 CIRCUIT SIZES.
  - △ PRODUCT SPECIFICATION PS 50-36 APPLIES.
  - △ THESE HOUSINGS CONFORM TO U.L. AND C.S.A. REQUIREMENTS.
  - △ .060/(1.52) HIGH RAISED NUMERALS.
  - △ .125/(3.18) HIGH RECESSED NUMERALS ON A MATTE BACKGROUND.
  - △ .09/(2.3) HIGH INK STAMPED NUMERALS.

**MATERIAL:**  
 POLYESTER, UNFILLED, 94V-0,  
 COLOR: BLACK,  
 (REF.: SMES I28C-II)

Use with 1457 Terminals

4	01	REVISED PER ECN UT0040
3	02	96/07/22 SCARTH
2	01	REVISED ECN IFS 0426
1	02	12/18/99 BHR



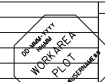
DRAWINGS SHOWN METRIC INCH		= 0		REVISE ONLY ON CAD SYSTEM	
UNLESS OTHERWISE SPECIFIED TOLERANCES ARE AS FOLLOWS		TITLE		HOUSING, COMMONING	
1. HOLE ± .010		DATE		02/18/91	
2. HOLE ± .010		DRAWN		SD-1461-•	
3. HOLE ± .010		CHECKED		SEE CHART	
4. HOLE ± .010		APPROVED		MATERIAL	
5. HOLE ± .010		SCALE		4 : 1	
6. HOLE ± .010		SHEET NO.		1 OF 4	
7. HOLE ± .010		PART NO.		SD-1461-•	
8. HOLE ± .010		MATERIAL		POLYESTER, UNFILLED, 94V-0, COLOR: BLACK	
9. HOLE ± .010		DATE		12/18/99	
10. HOLE ± .010		DRAWN		SD-1461-•	
11. HOLE ± .010		CHECKED		SEE CHART	
12. HOLE ± .010		APPROVED		MATERIAL	
13. HOLE ± .010		SCALE		4 : 1	
14. HOLE ± .010		SHEET NO.		1 OF 4	
15. HOLE ± .010		PART NO.		SD-1461-•	
16. HOLE ± .010		MATERIAL		POLYESTER, UNFILLED, 94V-0, COLOR: BLACK	
17. HOLE ± .010		DATE		12/18/99	
18. HOLE ± .010		DRAWN		SD-1461-•	
19. HOLE ± .010		CHECKED		SEE CHART	
20. HOLE ± .010		APPROVED		MATERIAL	

PART NO.	ENG. NO.	NO. CKTS.	DIM. A	DIM. B	DIM. C	DIM. D
07-01-7201	1461-20	20	3.50 (88.9)	3.63 (92.2)	4.00 (101.6)	4.24 (107.7)
07-01-7151	1461-15	15	2.62 (66.5)	2.75 (69.9)	3.13 (79.5)	3.37 (85.6)
07-01-7101	1461-10	10	1.750 (44.45)	1.875 (47.63)	2.250 (57.15)	2.49 (63.2)
07-01-7051	1461-5	5	.875 (22.23)	1.000 (25.40)	1.375 (34.93)	1.615 (41.02)

SPECIAL NUMBERED HOUSINGS CHART			
PART NO.	ENG. NO.	NO. CKTS.	CIRCUIT NUMERALS
07-01-7102	1461-10-1	10	11 THRU 20
07-01-7103	1461-10-2	10	21 THRU 30
07-01-7104	1461-10-3	10	31 THRU 40
07-01-7152	1461-15-1	15	16 THRU 30
07-01-7153	1461-15-2	15	31 THRU 45
07-01-7154	1461-15-3	15	46 THRU 60
07-01-7202	1461-20-1	20	21 THRU 40
07-01-7203	1461-20-2	20	41 THRU 60
07-01-7204	1461-20-3	20	61 THRU 80

INK STAMPED HOUSINGS								
BEFORE INK STAMP		AFTER INK STAMP		NO. CKTS.	DIM. A	DIM. B	DIM. C	DIM. D
PART NO.	ENG. NO.	PART NO.	ENG. NO.					
007-01-7206	1461-20B	007-01-7207	1461-20C	20	3.50 (88.9)	3.63 (92.2)	4.00 (101.6)	4.24 (107.7)
007-01-7156	1461-15B	007-01-7157	1461-15C	15	2.62 (66.5)	2.75 (69.9)	3.13 (79.5)	3.37 (85.6)
007-01-7106	1461-10B	007-01-7107	1461-10C	10	1.750 (44.45)	1.875 (47.63)	2.250 (57.15)	2.49 (63.2)
007-01-7056	1461-5B	007-01-7057	1461-5C	5	.875 (22.23)	1.000 (25.40)	1.375 (34.93)	1.615 (41.02)

SPECIAL INK STAMPED HOUSINGS CHART					
BEFORE INK STAMP		AFTER INK STAMP		NO. CKTS.	CIRCUIT NUMERALS
PART NO.	ENG. NO.	PART NO.	ENG. NO.		
007-01-7106	1461-10B	007-01-7108	1461-10-1C	10	11 THRU 20
		007-01-7109	1461-10-2C	10	21 THRU 30
		007-01-7100	1461-10-3C	10	31 THRU 40
007-01-7156	1461-15B	007-01-7158	1461-15-1C	15	16 THRU 30
		007-01-7159	1461-15-2C	15	31 THRU 45
		007-01-7160	1461-15-3C	15	46 THRU 60
007-01-7206	1461-20B	007-01-7208	1461-20-1C	20	21 THRU 40
		007-01-7209	1461-20-2C	20	41 THRU 60
		007-01-7200	1461-20-3C	20	61 THRU 80



DIMENSIONS SHOWN IN METRIC INCH

UNLESS OTHERWISE SPECIFIED TO DIMENSIONS ARE IN 1/16" INCH

1 PLACE ± 0.10	METRIC
2 PLACE ± 0.14	± 0.25
3 PLACE ---	± 0.35

DRAFT HERE APPLICABLE MUST REMAIN WITHIN DIMENSIONS

01 SEE SNEEY I

DRG. BY: AFG    CHG. BY: RHR    DATE: 03/22/91

APP'D: GWF    SCALE: 4 : 1

FILE NAME: SD-1461-\*

NO. DRAWING COPIES: 600

MOLEX INCORPORATED    SHEET NO. 2    DATE: 03/22/91

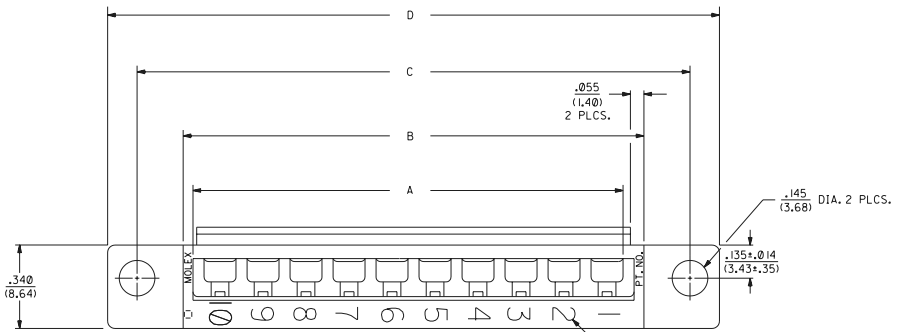
SEE CHART    SD-1461-\*

REVISE ONLY ON CAD SYSTEM

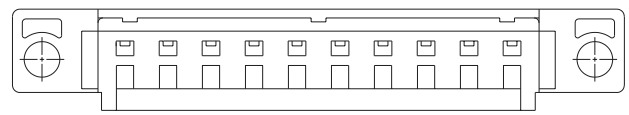
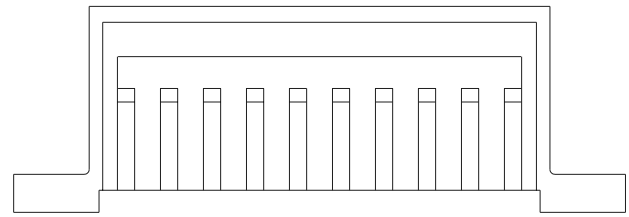
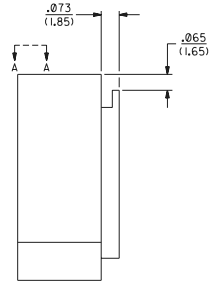
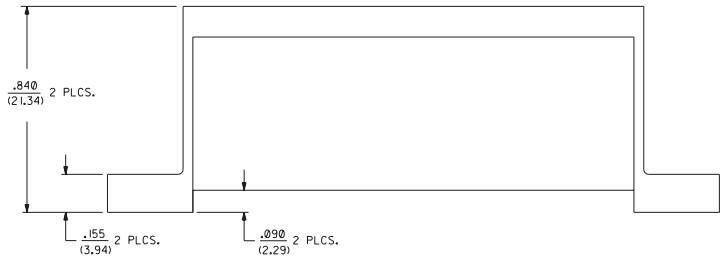
HOUSING, COMMONING  
[.025/(.64) OFFSET]

**NOTES:**

- △ THESE HOUSINGS ARE FOR USE WITH THE 1457-• TERMINALS AND MAY BE SUBDIVIDED BY USING THE 1461-K KEY.
- △ THE HOUSINGS ARE ONLY AVAILABLE IN 5, 10, 15, AND 20 CIRCUIT SIZES.
- △ PRODUCT SPECIFICATION PS 50-36 APPLIES.
- △ THESE HOUSINGS CONFORM TO U.L. AND C.S.A. REQUIREMENTS.
- △ .060/(1.52) HIGH RAISED NUMERALS.
- △ .125/(3.18) HIGH RECESSED NUMERALS ON A MATTE BACKGROUND.
- △ .09/(2.3) HIGH INK STAMPED NUMERALS.



VIEW A-A



**MATERIAL:**  
 POLYESTER, UNFILLED, 94V-0,  
 COLOR: BLACK.  
 (REF.: SMES 128C-1)

02	SEE SHT 1
----	-----------

WORK AREA PLOT

DIMENSIONS SHOWN METRIC INCH		MFG. SH. REV. LTR. REVISIONS	
UNLESS OTHERWISE SPECIFIED GO TO TOLERANCES AND SURF. FINISH		REV. 3 12/18/95	
TITLE HOUSING, COMMONING [.090/(2.29) OFFSET]		PART NO. 69152	
MATERIAL POLYESTER, UNFILLED, 94V-0, COLOR: BLACK, (REF.: SMES 128C-1)		DRAWN BY GW	
CHECKED BY RHR		DATE	
SCALE 4 : 1		FILE NAME SD1461K3	
SEE CHART		SD-1461-•	

PART NO.	ENG. NO.	NO. CKTS.	DIM. A	DIM. B	DIM. C	DIM. D
07-01-8203	1461-20W	20	3.50 (88.9)	3.63 (92.2)	4.00 (101.6)	4.24 (107.7)
07-01-8153	1461-15W	15	2.62 (66.5)	2.75 (69.9)	3.13 (79.5)	3.37 (85.6)
07-01-8103	1461-10W	10	1.750 (44.45)	1.875 (47.63)	2.250 (57.15)	2.49 (63.2)
07-01-8053	1461-5W	5	.875 (22.23)	1.000 (25.40)	1.375 (34.93)	1.615 (41.02)

INK STAMPED HOUSINGS								
BEFORE INK STAMP		AFTER INK STAMP		NO. CKTS.	DIM. A	DIM. B	DIM. C	DIM. D
PART NO.	ENG. NO.	PART NO.	ENG. NO.					
007-01-8202	1461-20D	007-01-8201	1461-20E	20	3.50 (88.9)	3.63 (92.2)	4.00 (101.6)	4.24 (107.7)
007-01-8152	1461-15D	007-01-8151	1461-15E	15	2.62 (66.5)	2.75 (69.9)	3.13 (79.5)	3.37 (85.6)
007-01-8102	1461-10D	007-01-8101	1461-10E	10	1.750 (44.45)	1.875 (47.63)	2.250 (57.15)	2.49 (63.2)
007-01-8052	1461-5D	007-01-8051	1461-5E	5	.875 (22.23)	1.000 (25.40)	1.375 (34.93)	1.615 (41.02)

SPECIAL INK STAMPED HOUSINGS CHART									
BEFORE INK STAMP		AFTER INK STAMP		NO. CKTS.	CIRCUIT NUMERALS				
PART NO.	ENG. NO.	PART NO.	ENG. NO.						
007-01-8102	1461-10D	007-01-8104	1461-10-1F	10	11 THRU 20				
		007-01-8105	1461-10-2F	10	21 THRU 30				
		007-01-8106	1461-10-3F	10	31 THRU 40				
007-01-8152	1461-15D	007-01-8154	1461-15-1F	15	16 THRU 30				
		007-01-8155	1461-15-2F	15	31 THRU 45				
		007-01-8156	1461-15-3F	15	46 THRU 60				
007-01-8202	1461-20D	007-01-8204	1461-20-1F	20	21 THRU 40				
		007-01-8205	1461-20-2F	20	41 THRU 60				
		007-01-8206	1461-20-3F	20	61 THRU 80				

WORK AREA  
NO DIMENSIONS TO BE TAKEN FROM THIS AREA

DIMENSIONS SHOWN IN METRIC INCH

UNLESS OTHERWISE SPECIFIED TOLERANCES ARE AS FOLLOWS:

1 PLACE	± 0.10	METRIC
2 PLACE	± 0.14	± 0.25
3 PLACE	± 0.25	

DRAWING INK AND LETTERS MUST REMAIN WITHIN DIMENSIONS

SCALE: 4 : 1

REVISIONS ONLY ON CAD SYSTEM  
HOUSING, COMMONING  
[.090/(2.29) OFFSET]

MOLEX INCORPORATED  
PART NO. 69052  
SHEET NO. 4  
DATE 12/18/95

SEE CHART SD-1461-