

PRODUCT DATA DRAWING

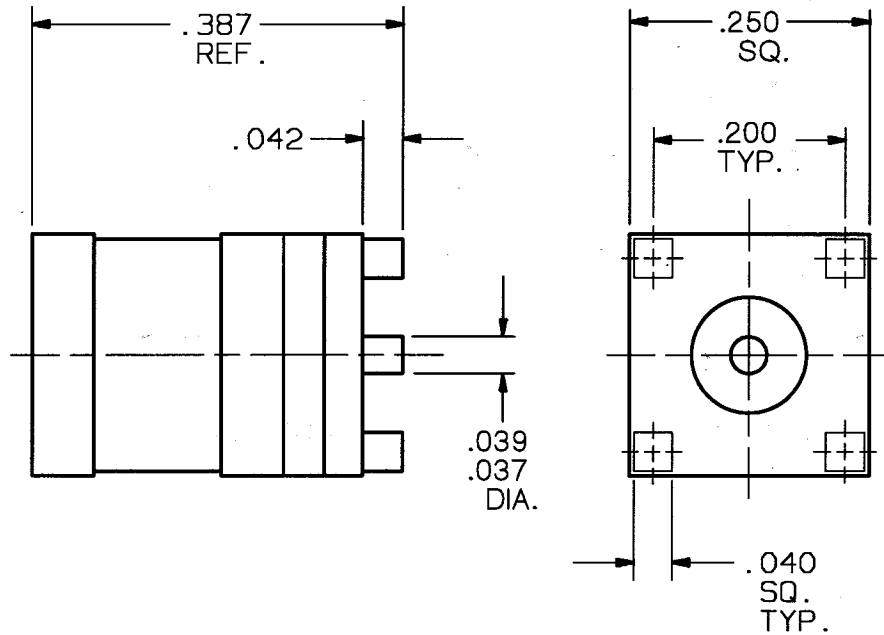
ENG. FILE COPY

CAD
GENERATED
DRAWING

DCN
CONTROLLED
DOCUMENT

DWG. NO.

2387-0006



MATERIALS:

BODY & SLEEVE: BRASS PER ASTM B 16, ALLOY 360
 CONTACT & SPRING: BERYLLIUM COPPER PER ASTM B 196
 INSULATOR: TEFLON PER ASTM D 1457

FINISH:

CENTER CONTACT: .000030 MIN. GOLD OVER NICKEL
 BODY: .000015 MIN. GOLD OVER NICKEL
 ALL OTHER METAL PARTS: .000005 MIN. GOLD OVER NICKEL

IMPEDANCE: 50 OHMS
 FREQ. RANGE: DC-4.0 GHz.
 D.W.V.: 1000 VRMS
 INSULATION RESISTANCE: 1000 MEGOHMS
 CONTACT CAPTIVATION: 6.0 LBS. MIN. AXIAL FORCE

SYM.	DESCRIPTION	DATE	APPR.	UNLESS OTHERWISE SPECIFIED:	DIMENSIONS ARE IN INCHES			Solltron Vector Microwave 3301 ELECTRONICS WAY WEST PALM BEACH, FL. 33407
				TOLERANCES:				
—	REL. DCN 22450	4/96	J.M.	1) ALL DIMENSIONS ARE AFTER PLATING. 2) BREAK CORNERS & EDGES .005 R. MAX. 3) CHAM. 1st & LAST THDS. 4) SURFACE ROUGHNESS 63 J MIL-STD-10. 5) DIAS. ON COMMON CENTERS TO BE CONCENTRIC WITHIN .005 T.I.R. 6) REMOVE ALL BURRS.	DECIMALS	FRACTIONAL	ANGULAR	TITLE: SMB PLUG, TO PRINTED CIRCUIT BOARD RECEPTACLE
A	REV. DCN 22479	4/96	<i>Jul</i>		.X ±.030	±1/64	X° ±1°0'	
					MATERIAL: SEE ABOVE			
					DRAWN: JRG. 4/04/96	FINISH: SEE ABOVE	AREA: N/A	
					CHECKED: DMB 4/09/96	SIZE	CAGE NO.	SCALE
					APPROVED: J.M. 4/10/96	A	95077	5X