






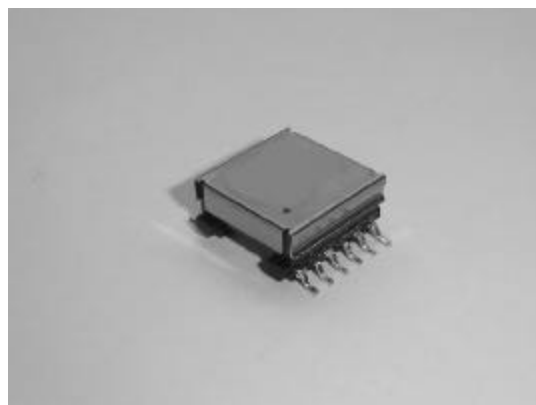


-  Designed to operate at frequency of 250kHz with input voltage of 18 - 57V
-  Designed for 25 Watt PoE application
-  Low Leakage Inductance
-  Hipot voltage between the primary and bias windings to the secondary windings: 1500Vrms
-  Operating temperature -40°C to +125°C.
-  RoHS compliant version is available
-  Custom design is also available



ELECTRICAL SPECIFICATION @ 25°C

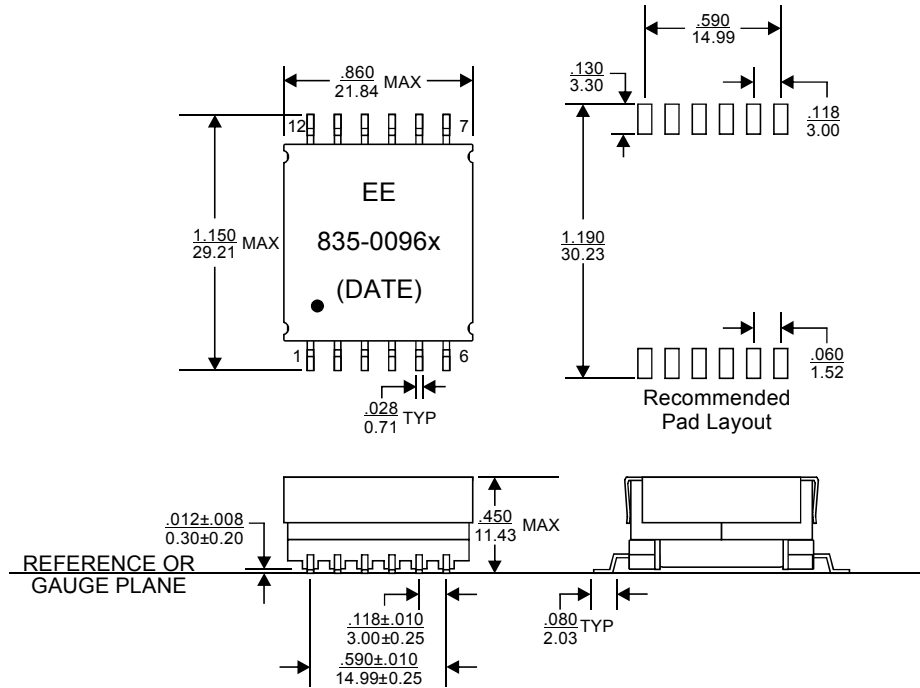
Part Number	RoHS Part Number	Turns Ratio		L at 0A (uH ±10%)	L at Ipk (uH Min)	Leakage Inductance (nH Max)	DCR (mOhm Max)			Ipk (A)	Output
		Pri : Sec	Pri : Bias				Pri	Sec	Bias		
835-00963	835-00963F	1 : 0.12	1 : 0.41	50	40.8	2.20	26	2.6	328	2.9	3.3V, 7.5A
835-00964	835-00964F	1 : 0.18	1 : 0.41	50	40.8	1.05	26	4.0	315	2.9	5V, 5A
835-00965	835-00965F	1 : 0.35	1 : 0.41	50	40.8	0.473	26	13	315	2.9	9V, 2.8A
835-00966	835-00966F	1 : 0.47	1 : 0.41	50	40.8	0.409	26	20	315	2.9	12V, 2.1A
835-00967	835-00967F	1 : 0.59	1 : 0.41	50	40.8	0.381	26	37	305	2.9	15V, 1.7A

Notes:

1. Inductance is measured at 250kHz, 0.7Vrms.
2. Peak primary current, Ipk, is drawn at minimum input voltage.
3. DCR for the primary and for the secondary is measured with the corresponding windings connected in parallel.
4. Leakage Inductance for the primary winding is with all secondary pins shorted.
5. Turns ratio is with the primary windings and the secondary windings connected in parallel.
6. Hipot is measured from primary and auxiliary windings to secondary windings. Bias winding output is 11V, 20mA.
7. Operating temperature range: -40°C to +125°C. The part temperature (ambient temperature + temperature rise) should not exceed the upper limit of the operating temperature under worst case operating conditions. Circuit design, component placement, PWB trace size and thickness, airflow and other cooling provisions all affect the part temperature. Part temperature should be verified in the end application.



MECHANICAL DIMENSIONS

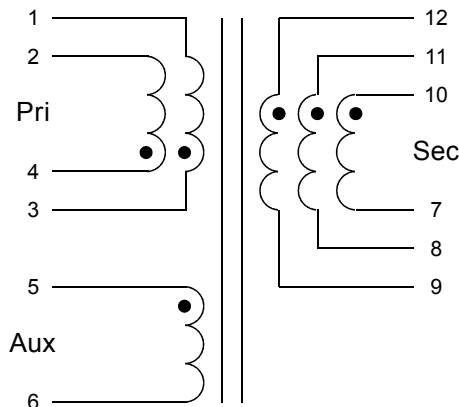


Notes:

- 8. All dimensions are specified in $\frac{\text{inches}}{\text{mm}}$ with higher precedence in inches.
- 9. Unless otherwise specified, all tolerances are $\pm \frac{.010}{0.25}$.
- 10. Coplanarity: $\frac{.004}{0.10}$ max.

Weight (in gram)	: 13.2 typ.
Tape & Reel	: 140 / reel

SCHEMATICS



FOR MORE INFORMATION, PLEASE CONTACT

HEADQUARTER
2/F Block A, Merit Industrial Centre,
94 Tokwawan Road, Kowloon,
Hong Kong
Tel: (852) 2765 3888
Fax: (852) 2954 3304
Email: eempl@eleceltek.com

Website: <http://www.eleceltek.com>

Information herein is for reference only and subject to change without notice. It does not constitute any representation, warranty or commitment of the company in respect of the products in any aspect. All logos, brands and product names mentioned herein are trademarks or registered trademarks of their respective owners. The company does not assume any liability arising out of the application or use of any product or circuit described herein. Copyrights 2006, E & E Magnetic Products Limited.