



LOW LEVEL DETECTORS, DIRECTIONAL

CD SERIES

GENERAL INFORMATION

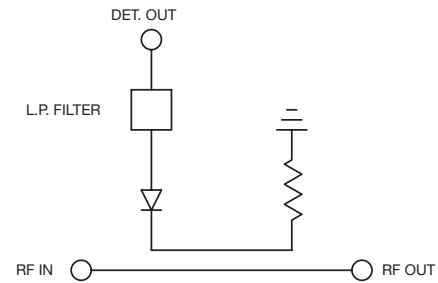
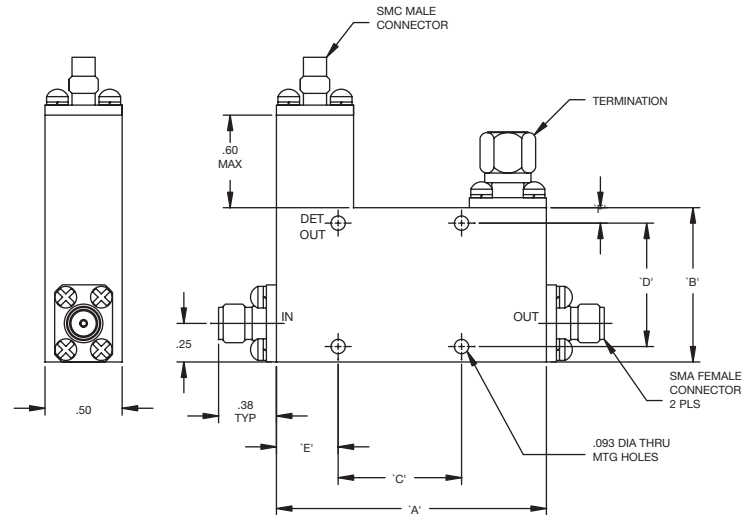
The CD Series Directional Detectors are directional couplers with an integral detector. They are used for monitoring power without disturbing the main line power flow. The CD Series are low level devices using high sensitivity detector diodes and high directivity couplers. They are octave band units, but can be custom tuned to any narrow frequency band in order to achieve flatter response.

GENERAL SPECIFICATIONS

RF Impedance 50 Ohms

Temperature Operating from -55° to +85°C

Connectors SMA Female



Model No.	Frequency Range GHz	Min Directivity dB	Max Insertion Loss dB	Max VSWR	Flatness over Frequency Range dB	Detector Output @10mW Input	"A" in	"B" in	"C" in	"D" in	"E" in	"F" in
CD-22	0.5-1.0	25	0.7	1.20	±.75	125	3.25	1.13	1.80	0.93	0.73	0.10
CD-25	1.0-2.0	20	0.8	1.20	±.75	125	1.85	1.13	0.65	0.93	0.60	0.10
CD-32	2.0-4.0	20	0.8	1.25	±.75	125	1.20	1.13	-	0.93	0.60	0.10
CD-62	4.0-8.0	18	0.8	1.25	±.75	100	1.00	1.25	0.48	-	0.42	0.68
CD-82	7.0-12.4	17	0.9	1.30	±.75	75	1.00	1.25	0.48	-	0.40	0.68
CD-84	8.0-16.0	15	1	1.45	±1.0	50	1.00	1.00	-	0.80	0.50	0.10
CD-92	12.0-18.0	14	1	1.5	±1.0	50	1.00	1.00	-	0.80	0.50	0.10

- 1) Standard units are supplied with a negative DC output. If positive output is required place suffix "P" after the model number
- 2) Insertion loss includes coupled loss (10dB Coupler)
- 3) A 50 Ohm termination is supplied on each unit delivered. Power rating is 10 Watts at 25°C