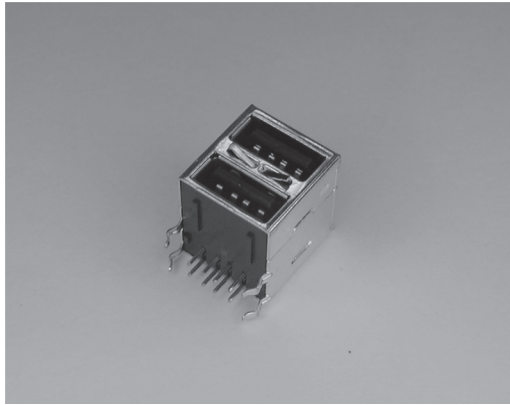


# 610/USB A Type Dual



## MATERIAL:

1. HOUSING : PBT + G.F. UL94V-0.
2. CONTACT : PHOSPHOR BRONZE.
3. SHIELD : PHOSPHOR BRONZE.

## FINISH:

1. CONTACT : G/FOVER PD-NI 30u".
2. SOLDER TAIL : TIN-LEAD 100u" MIN.
3. SHIELD : LIGHT TIN 120u"(MIN). OVER CU 100u"(MIN).

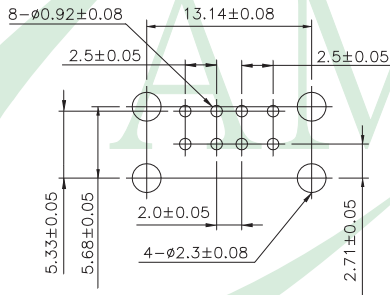
## ELECTRICAL :

1. CONTACT RESISTANCE : 30 MEGOHMS MAX.
2. DIELECTRIC WITHSTANDING VOLTAGE : 750 VAC AT SEA LEVEL.
3. INSULATION RESISTANCE : 1000 MEGOHMS MIN.

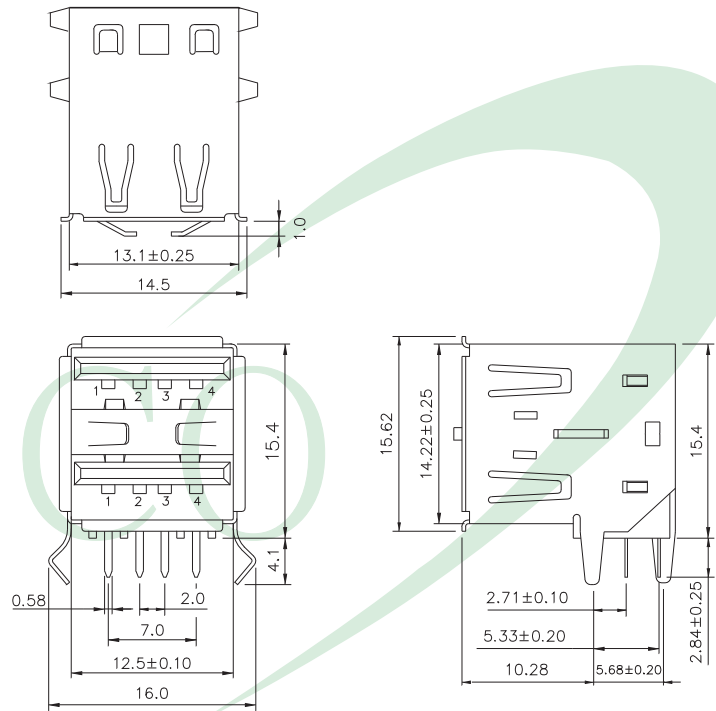
## MECHANICAL :

1. MATING FORCE : 3.57KG MAX.
2. UNMATING FORCE : 1.02KG MIN.
3. PC99 PANTONE COLOR CODE : BLACK : 426C.

MATING FORCE : 1.02KG MIN.



P.C.B LAYOUT



## 610. USB A TYPE

Series No.

1	2	3	4
6	1	0	—

DUAL PORT TYPE  
RIGHT ANGLE

## No. of

Contacts

5

4

4 Pin

## Shell

Type

6

A

A: 2 Front Touch  
B: 4 Front Touch  
C: 6 Front Touch  
D: Optional 2 Front Touch  
E: Without Front Touch

## Rear

Cover

7

M

M: With Rear Cover  
N: Without Rear Cover

## Contact Plated

8

S

9

1

T1: TIN  
G1: Gold Flash S1: Gold Flash  
G2: 3u" Gold S2: 3u" Gold  
G3: 5u" Gold S3: 5u" Gold  
G4: 10u" Gold S4: 10u" Gold  
G5: 15u" Gold S5: 15u" Gold  
G6: 30u" Gold S6: 30u" Gold  
(G: Full Gold)(S: Selective Gold)

## Plastic

Color

10

B

B: BLACK  
W: WHITE

## Branding

11

A

A: Amco Mark  
N: No Mark