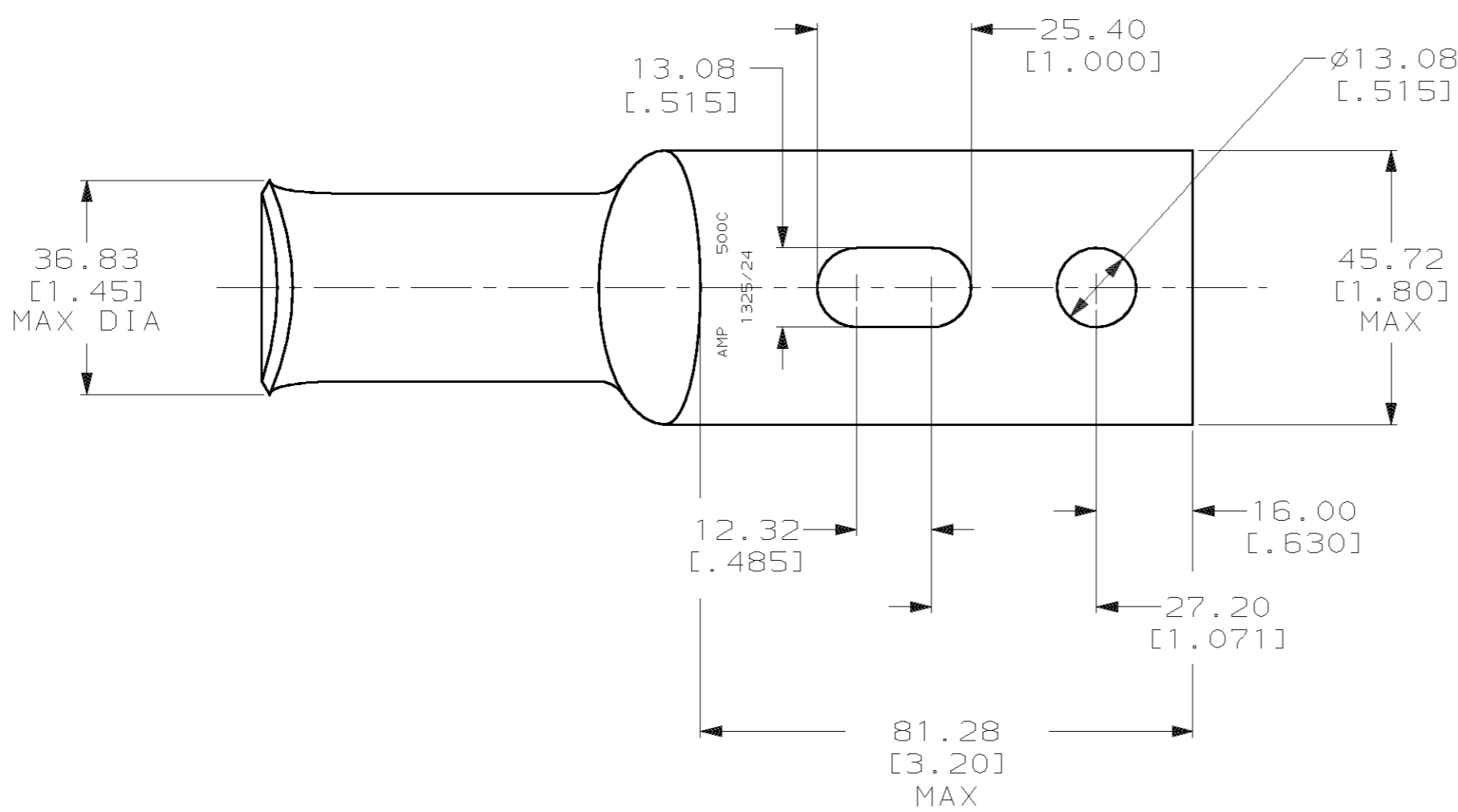
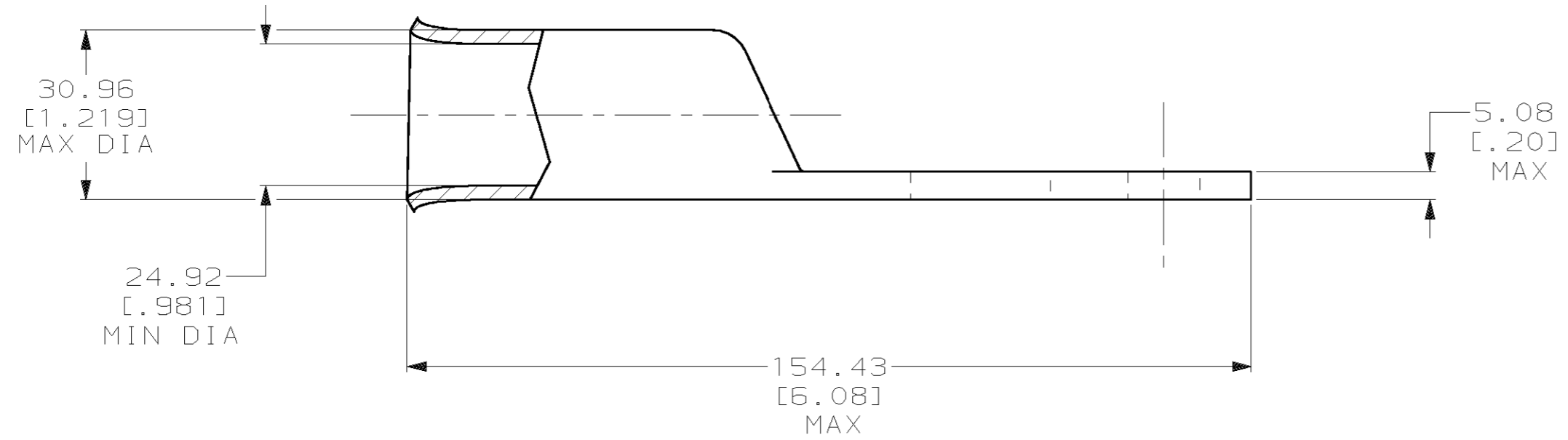


THIS DRAWING IS UNPUBLISHED. RELEASED FOR PUBLICATION
 © COPYRIGHT 19 BY AMP INCORPORATED. ALL INTERNATIONAL RIGHTS RESERVED.

LOC		DIST		P		F		ZONE		LTR		REVISIONS		
G		86								A		DESCRIPTION	DATE	APPD
												REDRAWN PER 063A-0078-00	08FEB00	JR/M5



1 CIRCULAR MIL RANGE: 450-550 MCM
 2 TIN PL 0.00381 [0.00150] MIN THK PER ASTM B545



608348-1

PART NO

DO NOT SCALE PRINT. UNLESS SPECIFIED DIMENSIONS IN mm [INCHES] TOLERANCES ON: 2 PLC DEC ± 0.51 [0.020] 3 PLC DEC ± - ANGLES ± -		DR 08FEB00 JR RUTH		AMP INCORPORATED Harrisburg, Pa. 17105	
MATERIAL ANNEALED COPPER ASTM B-188		CHK 08FEB00 JR RUTH			
FINISH 2		APPD 08FEB00 M SPICER		NAME TERMINAL, AMPOWER™, WIRE SIZE: 500 MCM	
		APPD 08FEB00 M SPICER		DRAWING NO 608348	
		PRODUCT SPEC 108-30200		SIZE C	
		APPLICATION SPEC -		CAGE CODE 00779	
		WEIGHT .622 LB		SCALE 1:1	
				SHEET 1 OF 1	