

Low Profile Push-On Coaxial Connector

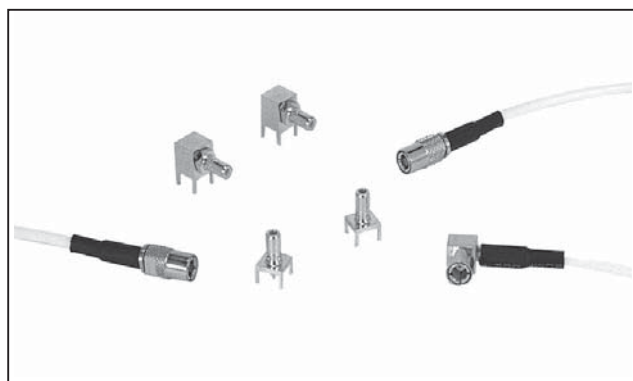
SSMB Series



Frequency
Range
DC to 2GHz

Characteristic
Impedance
50 Ω

Lock Type
Push On



FEATURE

- Low profile coaxial connector with push on lock coupling which conforms to IEC Pub. 169-19.
- Mating heights from PCB are available in combination SP and LR (6mm) and combination LP and SR (11mm).

CONFORMING STANDARD

IEC-Pub. 169-19

SPECIFICATIONS

Characteristic Impedance	50 Ω
Dielectric Withstanding Voltage	500V AC(r.m.s.)for1 minute
Insulation Resistance	1.000M Ω Mim. at 250V DC
Contact Resistance	Center Conductor 7.5m Ω Max. Outer Conductor 2.5m Ω Max.
V.S.W.R.	1.3 max. at DC to 2GHz

* The specifications are typical but may not apply to all connectors. Please check the specifications on each item with its drawing from us when you use.

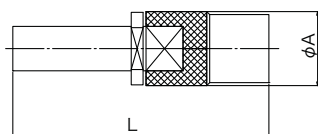


MATERIAL/FINISH

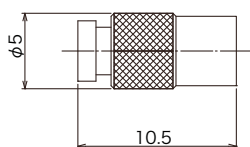
Item	Material / Finish
Shell (Body)	Copper Alloy / Au Plating
Contact (Male)	Copper Alloy / Au Plating
Contact (Female)	Copper Alloy / Au Plating
Insulator	PTFE

© Please acknowledge that the specification etc. of this catalog might change by the improvement etc. without a previous notice.
Moreover, the characteristic and the specification of the published product are the reference values.
Please confirm the content with the latest delivery specifications when you use the product.

▶ Plug Connector

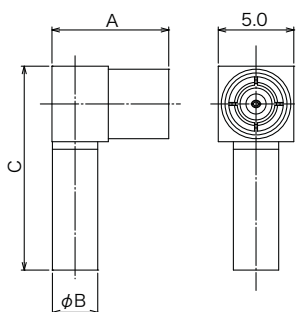


Part Number	Applicable Cable	Dimensions		Finish		Assembly Instruction	Crimp Tool
		φ A	L	Outer Conductor	Center Conductor		
SSMB-SP-0.8DV-CR-CF	0.8D-QEV	5.0	13.9	Au	Au		CR-H-13510
SSMB-SP-196U-CF	RG-196A/U	5.0	17.3	Au	Au	1	CR-H-1164
SSMB-SP-1.5QEW-CF	1.5D-QEW	5.5	15.8	Au	Au	2	CR-H-1133

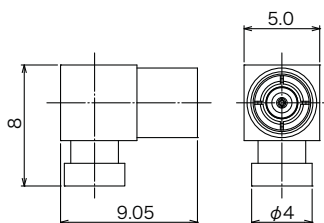


Part Number	Applicable Cable	Finish		Assembly Instruction
		Outer Conductor	Center Conductor	
SSMB-SP-85-SO-CF	FCCA VG1	Au	Au	

▶ Right Angle Plug Connector



Part Number	Applicable Cable	Dimensions			Finish		Assembly Instruction	Crimp Tool
		A	B	C	Outer Conductor	Center Conductor		
SSMB-LP-0.8DQEV-CF	0.8D-QEV	7.73	3.0	13.5	Au	Au	1	CR-H-1164
SSMB-LP-196U-CF	RG-196A/U	7.73	3.0	13.5	Au	Au	1	CR-H-1164
SSMB-LP-1.5QEW-CF	1.5D-QEW	8.48	4.5	12.4	Au	Au	2	CR-H-1133



Part Number	Applicable Cable	Finish		Assembly Instruction
		Outer Conductor	Center Conductor	
SSMB-LP-85-SO-CF	FCCA VG1	Au	Au	

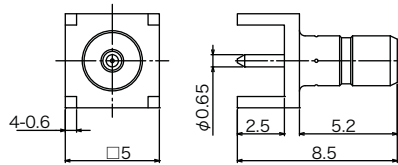
© Please acknowledge that the specification etc. of this catalog might change by the improvement etc. without a previous notice.

Moreover, the characteristic and the specification of the published product are the reference values.

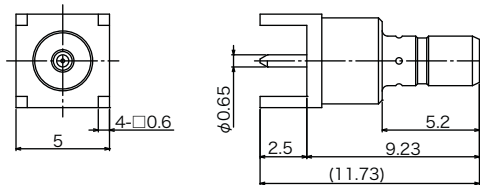
Please confirm the content with the latest delivery specifications when you use the product.

<http://www.ddknet.co.jp>

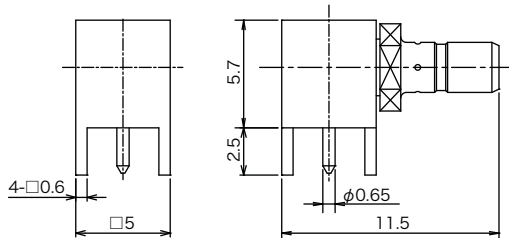
▶ Receptacle Connector



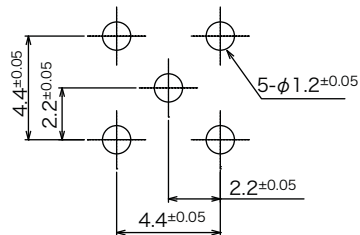
Part Number	Finish	
	Outer Conductor	Center Conductor
SSMB-SR-PC-CF	Au	Au



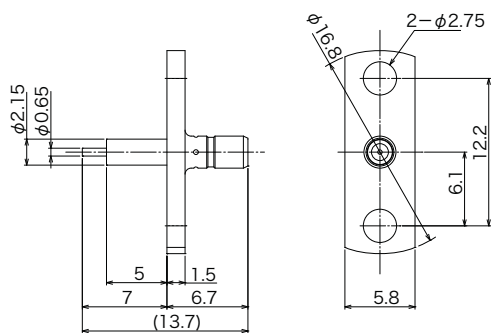
Part Number	Finish	
	Outer Conductor	Center Conductor
SSMB-SR-PC-1-CF	Au	Au



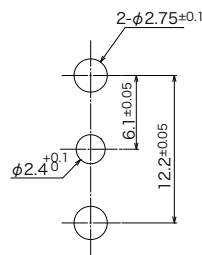
Part Number	Finish	
	Outer Conductor	Center Conductor
SSMB-LR-PC-CF	Au	Au



PCB Mounting Dimensions



Part Number	Finish	
	Outer Conductor	Center Conductor
SSMB-SR2-CF	Au	Au



PCB Mounting Dimensions

© Please acknowledge that the specification etc. of this catalog might change by the improvement etc. without a previous notice.

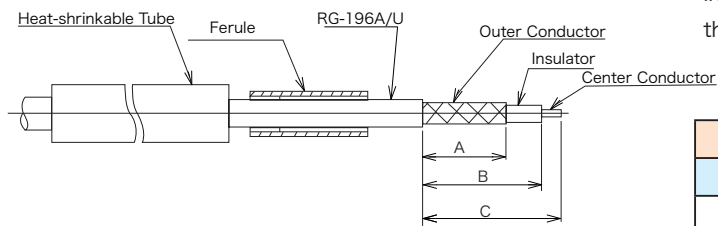
Moreover, the characteristic and the specification of the published product are the reference values.

Please confirm the content with the latest delivery specifications when you use the product.

<http://www.ddknet.co.jp>

▶ Assembly Instruction (1)

①

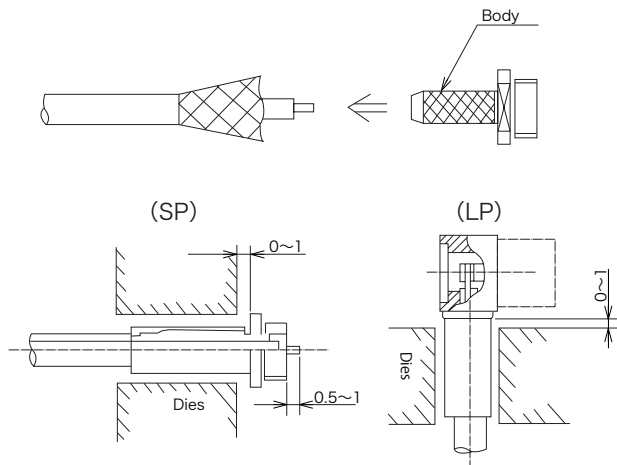


① Cable cutting

Insert the heat-shrinkable tube and ferule into the cable and cut the cable as left figure.

Part Number	A	B	C
SSMB-SP-196U-CF	6	8.5	10.5
SSMB-LP-196U-CF	6	8.5	9.5
SSMB-LP-0.8DQEV-CF	6	8.5	9.5

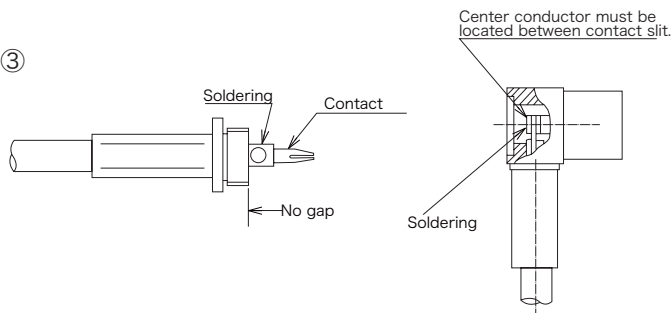
②



② Crimping outer conductor

Stretch the outer conductor of cable, insert the body and crimp the ferule on the outer conductor by dies.

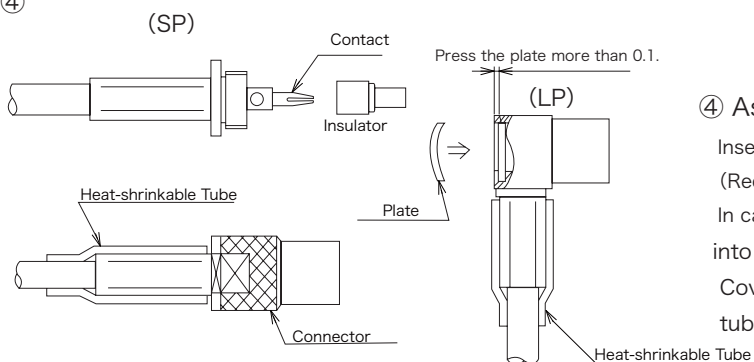
③



③ Soldering contact

Solder the contact with center conductor of the cable.

④



④ Assemble connector

Insert the insulator and screw the shell.

(Recommended screw torque : 49N/cm) .

In case of LP style, insert the plate and press it into the connector.

Cover the root of connector with heat-shrinkable tube and heat shrink.

© Please acknowledge that the specification etc. of this catalog might change by the improvement etc. without a previous notice.

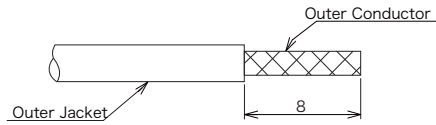
Moreover, the characteristic and the specification of the published product are the reference values.

Please confirm the content with the latest delivery specifications when you use the product.

<http://www.ddknet.co.jp>

▶ Assembly Instruction (2)

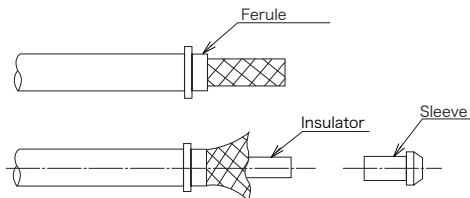
①



① Removing outer jacket

Removing outer jacket as left figure.

②

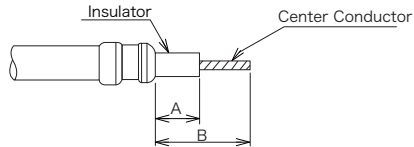


② Insert ferule and sleeve

Insert ferule into the cable, stretch the outer conductor of the cable and insert sleeve.

Cut off the outer conductor of the cable along the sleeve

③



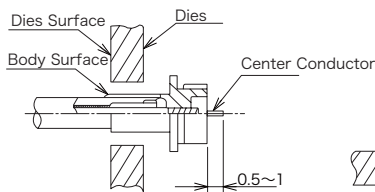
③ Cutting cable

Cut the center conductor and insulator of the cable as left figure.

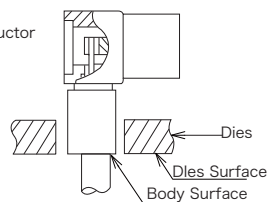
Part Number	A	B
SSMB-SP-1.5QEW-CF	2.8	5.2
SSMB-LP-1.5QEW-CF	2.8	4.7

④

(SP)



(LP)

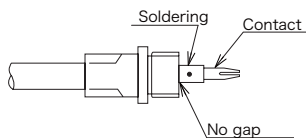


④ Crimping body

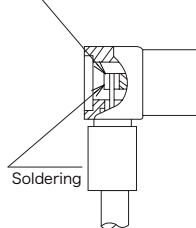
Insert the body and crimp it by dies.

Crimping body should be equal to body surface and dies surface.

⑤



Center Conductor must be located between contact slit.

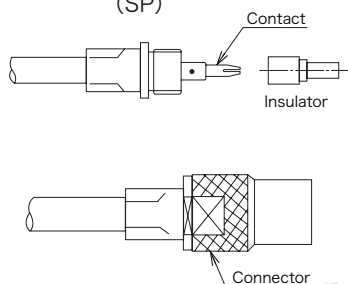


⑤ Soldering contact

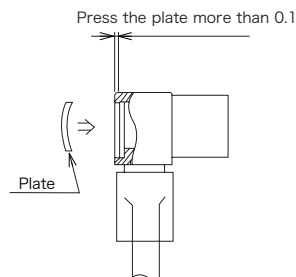
Soldering the contact with center conductor of the cable

⑥

(SP)



(LP)



⑥ Assemble connector

Insert the insulator and screw the connector.

(Recommended screw torque : 49N/cm)

In case of LP style, insert the plate and press it into the connector.