



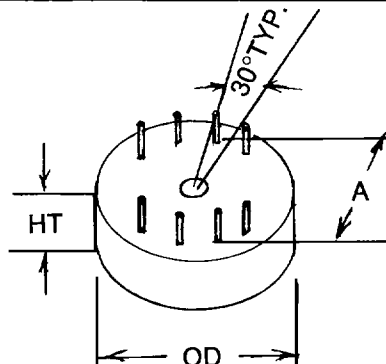
QUALITY MAGNETIC COMPONENTS • DESIGNED WITH 30 YRS. OF EXPERTISE

1900 CHRIS LANE / ANAHEIM, CA 92805 / 714-634-2220 / FAX 714-634-0905

## PRECISION TOROIDAL POWER TRANSFORMERS 400 Hz

- PRIMARY VOLTAGE: 115 ±15 VOLTS  
230 ±30 VOLTS
- OPERATING FREQUENCY: 400 Hz ±20 Hz
- INSULATION VOLTAGE: 1500 VAC
- MOLDED FOR P.C. MOUNTING
- 400 Hz POWER TRANSFORMERS FEATURE LOW PROFILES AND ARE DESIGNED FOR STANDARD REGULATOR CHIPS USING FULL WAVE BRIDGE CENTER TAP OR FULL WAVE BRIDGE.
- ANY SIZE 5VA TO 15,000VA. THESE TRANSFORMERS ARE ALL MACHINE MADE TO ACHIEVE HIGH CONSISTENCY AND RELIABILITY.

Part Number	Volt. Amps	Volts Load Rms	Current Amp Rms	Volts N/L Rms	A	OD	Size	HT
6490	100	2 x 5	10	2 x 5.9	2.80	3		1.0
6491		2 x 10	5	2 x 11.8	2.80	3		1.0
6492		2 x 12	4.2	2 x 14.0	2.80	3		1.0
6493		2 x 18	2.8	2 x 21.2	2.80	3		1.0
6494		2 x 24	2.1	2 x 28.4	2.80	3		1.0
6495		2 x 28	1.78	2 x 33.0	2.80	3		1.0
6470	50	2 x 5	5	2 x 5.5	2.55	2¾		1.0
6471		2 x 10	2.5	2 x 11.0	2.55	2¾		1.0
6472		2 x 12	2.1	2 x 12.8	2.55	2¾		1.0
6473		2 x 18	1.4	2 x 19.0	2.55	2¾		1.0
6474		2 x 24	1.05	2 x 25.5	2.55	2¾		1.0
6475		2 x 28	.89	2 x 30	2.55	2¾		1.0
6450	25	2 x 5	2.5	2 x 5.5	2.18	2¾		¾
6451		2 x 10	1.125	2 x 11.2	2.18	2¾		¾
6452		2 x 12	1.05	2 x 13.0	2.18	2¾		¾
6453		2 x 18	.70	2 x 19.6	2.18	2¾		¾
6454		2 x 24	.50	2 x 26.0	2.18	2¾		¾
6455		2 x 28	.45	2 x 30.4	2.18	2¾		¾
6430	10	2 x 5	1.00	2 x 5.3	1.80	2		¾
6431		2 x 10	.5	2 x 10.8	1.80	2		¾
6432		2 x 12	.42	2 x 12.8	1.80	2		¾
6433		2 x 18	.28	2 x 19	1.80	2		¾
6434		2 x 24	.208	2 x 25.5	1.80	2		¾
6435		2 x 28	.18	2 x 31	1.80	2		¾
6410	5	2 x 5	.50	2 x 5.3	1.67	1¾		¾
6411		2 x 10	.25	2 x 10.8	1.67	1¾		¾
6412		2 x 12	.21	2 x 12.8	1.67	1¾		¾
6413		2 x 18	.14	2 x 19	1.67	1¾		¾
6414		2 x 24	.104	2 x 25.5	1.67	1¾		¾
6415		2 x 28	.09	2 x 30.0	1.67	1¾		¾



\*AMECS001\*