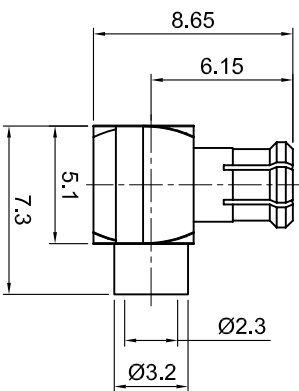
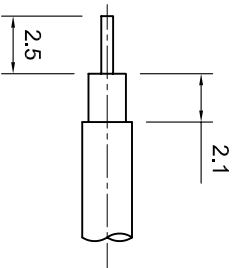



	<p>Tolerances</p> <p>1-20=+/-0.2 20-30=+/-0.3 30-40=+/-0.4 40-50=+/-0.5 50-100=+/-0.75 100-300=+/-1.5 Angles=+/-1</p> <p>Dimensions are in Millimeters</p>	<p>Revisions</p> <table border="1"> <tr> <th>Description/Approve/Date</th> <th>Approved</th> <th>Date</th> </tr> <tr> <td>1. Length changed from 10 to 10.3 mm / M.H./06/13/01</td> <td>M.H.</td> <td>05/30/00</td> </tr> <tr> <td></td> <td>Drawn</td> <td>Date</td> </tr> <tr> <td></td> <td>K.R.E.</td> <td>05/29/00</td> </tr> </table>	Description/Approve/Date	Approved	Date	1. Length changed from 10 to 10.3 mm / M.H./06/13/01	M.H.	05/30/00		Drawn	Date		K.R.E.	05/29/00
		Description/Approve/Date	Approved	Date										
1. Length changed from 10 to 10.3 mm / M.H./06/13/01	M.H.	05/30/00												
	Drawn	Date												
	K.R.E.	05/29/00												
<p>NOTES (plating thickness in micro-inches):</p> <p>1. Per QQ-B-626 2. Per QQ-S-764 3. Per QQ-C-530 4. Per QQ-B-750</p> <p>5. Per MIL-P-19468 6. Per ZZ-R-765 7. Per WW-T-799 8. Gold pl. 5 min. over nickel pl. 50 min. over copper strike 9. Nickel pl. 100 min. over copper strike 10. Per QQ-P-35 11. Gold pl. 30 min. over nickel pl. 50 min. over copper strike</p>														

RECOMMENDED STRIPPING DIMS



ITEM	MATERIAL	FINISH	 <p>Lighthouse Technologies, Inc. 5640 Kearny Mesa Road, Suite N San Diego, California 92111 Part Number: LT-MXLM31GT-086</p>	
Connector Body	Brass, Note 1	Gold, Note 8		
Center Contact: Male	Phosphor Bronze, Note 4	Gold, Note 11		
Insulation	Teflon, Note 5	None		
Ferrule	--	--		
Gasket	--	--	<p>Description MCX right angle solder plug for semi-rigid .086" cable.</p>	
Hex Nut	--	--		<p>Gold plated body, teflon dielectric.</p>
Lock Washer	--	--		
		Scale	3:1	
		Drawing No.	MCXMXLM31-086	
		File Name	MXLM31-086	