

82003	RPS-82003	20 ct	8 ct	2	1.5	.9	.03	22	1.6	.76	.19	1.58:1	3.16:1	65.85	
82005	RPS-82005	20 ct	20 ct	5	1.5	.9	.03	22	1.6	1.9	.48	1:1	2:1	65.85	
82010	RPS-82010	32 ct	32 ct	8	1.5	.9	.03	17.5	2.56	3	.75	1:1	2:1	65.85	
82015	RPS-82015	40 ct	40 ct	10	1.5	.9	.03	16	3.2	3.8	.95	1:1	2:1	65.85	
82018	RPS-82018	48 ct	16 ct	4	1.5	.9	.03	14.5	3.84	1.52	.38	1.73:1	3.46:1	65.85	
82020	RPS-82020	50 ct	50 ct	12.5	1.5	.9	.03	14	4	4.75	1.19	1:1	2:1	65.85	
82025	RPS-82025	80 ct	40 ct	8	1.5	.9	.03	11	6.4	3	.75	1.58:1	3.16:1	65.85	
82028	RPS-82028	100 ct	100 ct	10	1.5	.9	.03	10	8	3.8	.95	1.58:1	3.16:1	65.85	
82030	RPS-82030	100 ct	ct	25	1.5	.9	.03	10	8	9.5	2.38	1:1	2:1	65.85	
82035	RPS-82035	120 ct	12.8 ct	3.2	1.5	.9	.03	9	9.6	1.22	.3	3.06:1	6.12:1	65.85	
82040	RPS-82040	120 ct	60 ct	15	1.5	.9	.03	9	9.6	5.7	1.4	1.41:1	2.83:1	65.85	
82045	RPS-82045	120 ct	ct	30	1.5	.9	.03	9	9.6	11.4	2.85	1:1	2:1	65.85	
82050	RPS-82050	150 ct	12 ct	3	1.5	.9	.03	8	12	1.14	.29	3.54:1	7.08:1	65.85	
82055	RPS-82055	150 ct	50 ct	12.5	1.5	.9	.03	8	12	4.75	1.19	1.73:1	3.46:1	65.85	
82060	RPS-82060	150 ct	100 ct	25	1.5	.9	.03	8	12	9.5	2.38	1.22:1	2.44:1	65.85	
Pico Part Number Square Package	Pico Part Number Round Package	Prim Imped Ohms	Secondary Impedance Ohms Split Windings		Power Watts			Primary Unbal DC Current ma	Prim DC Resist Ohms	Secondary DC Resistance Ohms		Turns Ratio Prime/Sec		Pico Price 1-9 *** (US \$)	
			SER	PAR	1KHz and higher	300 Hz and higher	75 Hz and higher			SER CONN	PAR CONN	SEC SER CONN	SEC PAR CONN		
82065	RPS-82065	150 ct	150 ct	150	37.5	1.5	.9	.03	8	12	14.3	3.56	1:1	2:1	65.85
82070	RPS-82070	150 ct	600 ct	150	150	1.5	.9	.03	8	12	57	14.3	1:2	1:1	65.85
82075	RPS-82075	200 ct	ct	50	50	1.5	.9	.03	7	16	19	4.75	1:1	2:1	65.85
82080	RPS-82075	300 ct	200 ct	3	3	1.5	.9	.03	5.5	24	1.14	.29	5:1	10:1	65.85
82085	RPS-82080	300 ct	ct	12.5	12.5	1.5	.9	.03	5.5	24	4.75	1.19	2.45:1	4.9:1	65.85
82090	RPS-82080	300 ct	12 ct	10	10	1.5	.9	.03	5	32	3.8	.95	3.16:1	6.32:1	65.85
82095	RPS-82085	300 ct	50 ct	10	10	1.5	.9	.03	5	32	3.8	.95	3.16:1	6.32:1	65.85
82095	RPS-82090	300 ct	150 ct	37.5	37.5	1.5	.9	.03	5.5	24	14.25	3.56	1.41:1	2.83:1	65.85
82100	RPS-82095	300 ct	ct	75	75	1.5	.9	.03	5.5	24	28.5	7.13	1:1	2:1	65.85
82105	RPS-82100	300 ct	600 ct	150	150	1.5	.9	.03	5.5	24	57	14.25	1:1.41	1.41:1	65.85
82110	RPS-82105	320 ct	ct	3.2	3.2	1.5	.9	.03	5.5	25.6	1.22	.3	5:1	10:1	65.85
82115	RPS-82110	400 ct	12.8 ct	10	10	1.5	.9	.03	5	32	3.8	.95	3.16:1	6.32:1	65.85
82115	RPS-82115	400 ct	120 ct	30	30	1.5	.9	.03	5	32	11.4	2.85	1.83:1	3.65:1	65.85
82120	RPS-82120	400 ct	200 ct	50	50	1.5	.9	.03	5	32	19	4.75	1.41:1	2.83:1	65.85

82125	RPS-82125	400 ct	400 ct	100	1.5	.9	.03	5	32	38	9.5	1:1	2:1	65.85
82130	RPS-82130	400 ct	1000 ct	250	1.5	.9	.03	5	32	95	23.8	1:1.58	1.26:1	65.85
82135	RPS-82135	400 ct	2000 ct	500	1.5	.9	.03	5	32	190	47.5	1:2.24	1:1.12	65.85
82140	RPS-82140		4000 ct											
82142	RPS-82142	400 ct	12.8 ct	1000	1.5	.9	.03	5	32	380	95	1:3.16	1:1.58	65.85
82144	RPS-82144	500 ct	ct	3.2	1.5	.9	.03	4.5	40	1.22	.3	6.25:1	12.5:1	65.85
82145	RPS-82145	500 ct	16 ct	4	1.5	.9	.03	4.5	40	1.52	.38	5.6:1	11.2:1	65.85
82147	RPS-82147	500 ct	50 ct	12.5	1.5	.9	.03	4.5	40	4.75	1.19	3.16:1	6.32:1	65.85
	RPS-82147	500 ct	150 ct	37.5	1.5	.9	.03	4.5	40	14.25	3.56	1.83:1	3.65:1	65.85
82150	RPS-82150		500 ct											
82155	RPS-82155	500 ct	500 ct	125	1.5	.9	.03	4.5	40	47.5	11.88	1:1	2:1	65.85
82160	RPS-82160	*500 ct	ct	-	1.5	.9	.03	4.5	40	47.5	-	1:1	-	68.57
82165	RPS-82165	500 ct	600 ct	150	1.5	.9	.03	4.5	40	57	14.25	1:1.1	1.83:1	65.85
82167	RPS-82167	600 ct	ct	3.2	1.5	.9	.03	4	48	1.22	.3	6.85:1	13.7	57.50
	RPS-82167	600 ct	12.8 ct	7.5	1.5	.9	.03	4	48	2.85	.71	4.47:1	8.94:1	57.50
82170	RPS-82170		48 ct											
82175	RPS-82175	600 ct	200 ct	12	1.5	.9	.03	4	48	4.56	1.14	3.54:1	7.07:1	57.50
82180	RPS-82180	600 ct	600 ct	50	1.5	.9	.03	4	48	19	4.75	1.73:1	3.46:1	57.50
82185	RPS-82185	600 ct	ct	150	1.5	.9	.03	4	48	57	14.25	1:1	2:1	65.85
82186	RPS-82186	*600 ct	600 ct	-	1.5	.9	.03	4	48	57	-	1:1	-	59.88
	RPS-82186	*600 ct	ct	-	1.5	.9	.03	4	48	85.5	-	1:1.22	-	59.88
82187	RPS-82187		1200 ct											
82190	RPS-82190	600 ct	12.8 ct	300	1.5	.9	.03	4	48	114	28.5	1:1.41	1.41:1	57.50
82195	RPS-82195	640 ct	ct	3.2	1.5	.9	.03	4	51.2	1.22	.3	7.07:1	14.14:1	57.50
82200	RPS-82200	700 ct	100 ct	25	1.5	.9	.03	3.5	56	9.5	2.38	2.65:1	5.29:1	57.50
82205	RPS-82205	800 ct	ct	3.2	1.5	.9	.03	3.5	64	1.22	.3	7.91:1	15.8:1	57.50
	RPS-82205	800 ct	12.8 ct	12	1.5	.9	.03	3.5	64	4.56	1.14	4.08:1	8.16:1	57.50
82210	RPS-82210		800 ct											
82215	RPS-82215	800 ct	ct	200	1.5	.9	.03	3.5	64	76	19	1:1	2:1	57.50
82217	RPS-82217	900 ct	600 ct	150	1.5	.9	.03	3	72	57	14.3	1.23:1	2.45:1	57.50
82220	RPS-82220	*900 ct	ct	-	1.5	.9	.03	3	72	85.5	-	1:1	-	59.88
82225	RPS-82225	1000 ct	900 ct	3	1.5	.9	.03	3	80	1.14	.29	9.13:1	18.26:1	57.50
	RPS-82225	1000 ct	12 ct	12.5	1.5	.9	.03	3	80	4.75	1.19	4.47:1	8.94:1	57.50
82230	RPS-82230		1000 ct											
82235	RPS-82235	1060 ct	12.8 ct	250	1.5	.9	.03	3	80	95	23.8	1:1	2:1	57.50
82240	RPS-82240	1200 ct	ct	3.2	1.5	.9	.03	3	85	1.22	.3	9.1:1	18.2:1	57.50
82245	RPS-82245	1200 ct	ct	3.2	1.5	.9	.03	3	96	1.22	.3	9.68:1	19.4:1	57.50
82250	RPS-82245	1200 ct	500 ct	125	1.5	.9	.03	3	96	47.5	11.88	1.55:1	3.1:1	57.50
	RPS-82245	1200 ct	ct	300	1.5	.9	.03	3	96	114	28.5	1:1	2:1	57.50

	RPS-82250	1200 ct	1200 ct												
82255	RPS-82255	*1200 ct	1200 ct												
82260	RPS-82260	1500 ct	12 ct	-	1.5	.9	.03	3	96	114	-	1:1	-	59.88	
82265	RPS-82265	1500 ct	500	3	1.5	.9	.03	2.5	120	1.14	.29	11.18:1	22.36:1	57.50	
82270	RPS-82265	1500 ct	125	125	1.5	.9	.03	2.5	120	47.5	11.88	1.73:1	3.46:1	57.50	
82275	RPS-82270	*1500 ct	600	-	1.5	.9	.03	2.5	120	57	-	1.58:1	-	59.88	
	RPS-82275	*1500 ct	1500 ct	-	1.5	.9	.03	2.5	120	142	-	1:1	-	59.88	

Pico Part Number Square Package	Pico Part Number Round Package	Prim Imped Ohms	Secondary Impedance Ohms Split Windings		Power Watts			Primary Unbal DC Current ma	Prim DC Resist Ohms	Secondary DC Resistance Ohms		Turns Ratio Prime/Sec		Pico Price 1-9 *** (US \$)
			SER	PAR	1KHz and higher	300 Hz and higher	75 Hz and higher			SER CONN	PAR CONN	SEC SER CONN	SEC PAR CONN	
82280	RPS-82280		12.8 ct											
82283	RPS-82283	1600 ct	8 ct	3.2	1.5	.9	.03	2.5	128	1.22	3	11.18:1	22.36:1	57.50
82285	RPS-82285	2000 ct	2000 ct	2	1.5	.9	.03	2.2	160	.76	.19	15.8:1	31.6:1	57.50
82290	RPS-82285	2000 ct	ct	500	1.5	.9	.03	2.2	160	190	47.5	1:1	2:1	57.50
82295	RPS-82290	*2000 ct	2000 ct	-	1.5	.9	.03	2.2	160	190	-	1:1	-	59.88
	RPS-82295	2000 ct	ct	2000	1.5	.9	.03	2.2	160	760	190	1:2	1:1	57.50
	RPS-82295		8000 ct											
82297	RPS-82297	2500 ct	2500 ct	625	1.5	.9	.03	2	200	238	59.5	1:1	2:1	57.50
82300	RPS-82300	3000 ct	3000 ct	750	1.5	.9	.03	1.8	240	285	71.3	1:1	2:1	57.50
82305	RPS-82305	*3000 ct	3000 ct	-	1.5	.9	.03	1.8	240	285	-	1:1	-	59.88
82310	RPS-82310		3600 ct											
82312	RPS-82312	3600 ct	16 ct	90	1.5	.9	.03	1.7	288	342	86	1:1	2:1	65.85
82314	RPS-82314	4000 ct	600 ct	4	1.5	.9	.03	1.6	320	1.52	.38	15.8:1	31.62:1	65.85
82315	RPS-82314	4000 ct	1000 ct	150	1.5	.9	.03	1.6	320	57	14.3	2.58:1	5.16:1	65.85
82320	RPS-82315	*4000 ct	ct	250	1.5	.9	.03	1.6	320	95	23.8	2:1	4:1	65.85
	RPS-82320		8000 ct	-	1.5	.9	.03	1.6	320	760	-	1:1.41	-	68.57
82325	RPS-82325		500 ct											
82330	RPS-82330	5000 ct	5000 ct	125	1.5	.9	.03	1.4	400	47.5	11.88	3.16:1	6.32:1	65.85
82335	RPS-82335	5000 ct	ct	1250	1.5	.9	.03	1.4	400	475	119	1:1	2:1	65.85
82340	RPS-82335	7500 ct	50 ct	12.5	1.3	.9	.03	1.2	600	4.75	1.19	12.25:1	24.5:1	73.32
82345	RPS-82340	7500 ct	100 ct	25	1.3	.9	.03	1.2	600	9.5	2.38	8.66:1	17.32:1	73.32
	RPS-82345		600 ct	150	1.3	.9	.03	1.2	600	57	14.3	3.54:1	7.07:1	73.32
82350	RPS-82350		2500 ct											
82355	RPS-82355	7500 ct	7500 ct	625	1.3	.9	.03	1.2	600	238	59.5	1.73:1	3.46:1	73.32
82360	RPS-82360	*7500 ct	ct	-	1.3	.9	.03	1.2	600	713	-	1:1	-	78.19
82365	RPS-82360	8000 ct	12.8 ct	3.2	1.2	.9	.03	1.1	640	1.22	.3	25:1	50:1	73.32
	RPS-82365	8000 ct	1000 ct	250	1.2	.9	.03	1.1	640	95	23.8	2.83:1	5.66:1	73.32

82370	RPS-82365 RPS-82370	*8000 ct	1200 ct	-	1.2	.9	.03	1.1	640	114	-	2.58:1	-	78.18
82375	RPS-82375 RPS-82380	*9000 ct	9000 ct	-	1.1	.9	.03	1.1	720	855	-	1:1	-	78.19
82380	RPS-82385	10,000 ct	12.8 ct	3.2	1.0	.9	.03	1	800	1.22	.3	28:1	56:1	73.32
82385	RPS-82385	10,000 ct	ct	4	1.0	.9	.03	1	800	1.52	.38	25:1	50:1	73.32
82390	RPS-82390	10,000 ct	16 ct	25	1.0	.9	.03	1	800	9.5	2.38	10:1	20:1	73.32
82395	RPS-82390 RPS-82395	10,000 ct	100 ct 200 ct	50	1.0	.9	.03	1	800	19	4.75	7.07:1	14.14:1	73.32
82400	RPS-82400 RPS-82405	10,000 ct	500 ct 600 ct	125	1.0	.9	.03	1	800	47.5	11.88	4.47:1	8.94:1	73.32
82405	RPS-82410	10,000 ct	1000 ct	150	1.0	.9	.03	1	800	57	14.25	4.08:1	8.16:1	73.32
82410	RPS-82410	10,000 ct	1200 ct	250	1.0	.9	.03	1	800	95	23.8	3.16:1	6.32:1	73.32
82415	RPS-82415	10,000 ct	ct	300	1.0	.9	.03	1	800	114	28.5	2.89:1	5.77:1	73.32
82420	RPS-82415 RPS-82420	10,000 ct	1500 ct	375	1.0	.9	.03	1	800	143	35.8	2.58:1	5.16:1	73.32
82425	RPS-82425 RPS-82430	10,000 ct	2000 ct 5000 ct	500	1.0	.9	.03	1	800	190	47.5	2.24:1	4.47:1	73.32
82430	RPS-82435	10,000 ct	7500 ct	1250	1.0	.9	.03	1	800	475	119	1.41:1	2.83:1	73.32
82435	RPS-82435	10,000 ct	ct	1875	1.0	.9	.03	1	800	713	178	1.16:1	2.31:1	73.32
82440	RPS-82440	10,000 ct	10,000 ct	2500	1.0	.9	.03	1	800	950	238	1:1	2:1	73.32
82445	RPS-82445	*10,000ct	ct	-	1.0	.9	.03	1	800	950	-	1:1	-	78.19
82450	RPS-82450 RPS-82452	15,000 ct	400 ct 500 ct	100	.66	.66	.03	.8	1200	38	9.5	6.12:1	12.25:1	73.32
82452	RPS-82455	15,000 ct	600 ct	125	.66	.66	.03	.8	1200	48	12	5.48:1	10.95:1	73.32
82455	RPS-82455	15,000 ct	10,000 ct	150	.66	.66	.03	.8	1200	57	14.3	5:1	10:1	73.32
82460	RPS-82460	15,000 ct	ct	2500	.66	.66	.03	.8	1200	950	238	1.22:1	2.45:1	73.32
82465	RPS-82460 RPS-82465	*15,000ct	15,000 ct	-	.66	.66	.03	.8	1200	1430	-	1:1	-	78.19
82470	RPS-82470 RPS-82475	15,000 ct	15,000 ct	3750	.66	.66	.03	.8	1200	1430	357	1:1	2:1	73.32
82475	RPS-82480	16,000 ct	1000 ct	250	.62	.62	.03	.8	1280	95	23.8	4:1	8:1	73.32
82480	RPS-82485	20,000 ct	ct	125	.5	.5	.03	.7	1600	47.5	11.88	6.32:1	12.65:1	78.19
82485	RPS-82485	20,000 ct	500 ct	150	.5	.5	.03	.7	1600	57	14.25	5.77:1	11.55:1	78.19
82490	RPS-82485 RPS-82490	20,000 ct	600 ct 800 ct	200	.5	.5	.03	.7	1600	76	19	5:1	10:1	78.19
82495	RPS-82495 RPS-82500	20,000 ct	1000 ct 5000 ct	250	.5	.5	.03	.7	1600	95	23.8	4.47:1	8.94:1	78.19
82500	RPS-82505	20,000 ct	ct	1250	.5	.5	.03	.7	1600	475	119	2:1	4:1	78.19
82505	RPS-82505	20,000 ct	10,000 ct	2500	.5	.5	.03	.7	1600	950	238	1.41:1	2.83:1	78.19
82510	RPS-82510	*20,000ct	ct	-	.5	.5	.03	.7	1600	1900	-	1:1	-	81.28
82515	RPS-82510 RPS-82515	25,000 ct	20,000 ct 500 ct	125	.4	.4	.03	.6	2000	47.5	11.88	7.07:1	14.14:1	78.19

Pico Part Number Square Package	Pico Part Number Round Package	Prim Imped Ohms	Secondary Impedance Ohms Split Windings		Power Watt			Primary Unbal DC Current ma	Prim DC Resist Ohms	Secondary DC Resistance Ohms		Turns Ratio Prime/Sec		Pico Price 1-9 *** (US \$)
			SER	PAR	1KHz and higher	300 Hz and higher	75 Hz and higher			SER CONN	PAR CONN	SEC SER CONN	SEC PAR CONN	
82520	RPS-82520	25,000ct	1000 ct	250	.4	.4	.03	.6	2000	95	23.8	5:1	10:1	78.19
82525	RPS-82525	30,000ct	50 ct	12.5	.33	.33	.03	.6	2400	4.75	1.19	24.5:1	49:1	81.28
82530	RPS-82530	30,000ct	1200 ct	300	.33	.33	.03	.6	2400	114	28.5	5:1	10:1	81.28
82532	RPS-82532	30,000ct	500 ct	125	.33	.33	.03	.6	2400	47.5	11.88	7.7:1	15.5:1	81.28
82534	RPS-82534	30,000ct	200 ct	50	.33	.33	.03	.6	2400	19	4.75	12.2:1	24.5:1	81.28
82535	RPS-82535	30,000ct	5000 ct	1250	.33	.33	.03	.6	2400	475	119	2.45:1	4.9:1	81.28
82540	RPS-82540	30,000ct	10,000ct	2500	.33	.33	.03	.6	2400	950	238	1.73:1	3.46:1	81.28
82545	RPS-82545	*30,000ct	30,000ct	-	.33	.33	.03	.6	2400	2850	-	1:1	-	87.57
82550	RPS-82550	40,000ct	400 ct	100	.25	.25	.03	.5	3200	38	9.5	10:1	20:1	87.57
82555	RPS-82555	40,000ct	2000 ct	500	.25	.25	.03	.5	3200	190	47.5	4.47:1	8.94:1	87.57
82560	RPS-82560	40,000ct	4000 ct	1000	.25	.25	.03	.5	3200	380	95	3.16:1	6.32:1	87.57
82565	RPS-82565	40,000ct	20,000ct	5000	.25	.25	.03	.5	3200	1900	475	1.41:1	2.83:1	87.57
82570	RPS-82570	*40,000ct	40,000ct	-	.25	.25	.03	.5	3200	3800	-	1:1	-	97.21
82575	RPS-82575	50,000ct	200 ct	50	.2	.2	.03	.4	4000	19	4.75	15.8:1	31.6:1	97.21
82577	RPS-82577	50,000ct	500 ct	125	.2	.2	.03	.4	4000	47.5	11.88	10:1	20:1	97.21
82578	RPS-82578	50,000ct	600 ct	150	.2	.2	.03	.4	4000	57	14.3	9.13:1	18.26:1	97.21
82579	RPS-82579	50,000ct	50,000ct	12,500	.2	.2	.03	.4	4000	4750	1190	1:1	2:1	97.21
82580	RPS-82580	60,000ct	15,000ct	3750	.16	.16	.03	.4	4800	1430	358	2:1	4:1	105.03
82585	RPS-82585	62,500ct	50 ct	12.5	.16	.16	.03	.4	5000	4.75	1.19	35.4:1	70.7:1	105.03
82587	RPS-82587	80,000ct	15,000ct	3750	.12	.12	.03	.3	6400	1430	358	2.3:1	4.6:1	98.16
82590	RPS-82590	90,000ct	10,000ct	2500	.11	.11	.03	.3	7200	950	238	3:1	6:1	105.03
82595	RPS-82595	95,000ct	15,000ct	3750	.1	.1	.03	.3	7600	1430	358	2.5:1	5:1	110.24
82600	RPS-82600	100,000ct	60 ct	15	.1	.1	.03	.3	8000	5.7	1.43	40.8:1	81.6:1	110.24
82605	RPS-82605	100,000ct	100 ct	25	.1	.1	.03	.3	8000	9.5	2.38	31.6:1	63.2:1	110.24
82610	RPS-82610	100,000ct	500 ct	125	.1	.1	.03	.3	8000	47.5	11.88	14.1:1	28.3:1	110.24
82613	RPS-82613	100,000ct	1000 ct	250	.1	.1	.03	.3	8000	95	23.8	10:1	20:1	110.24
82614	RPS-82614	100,000ct	2000 ct	500	.1	.1	.03	.3	8000	190	47.5	7.07:1	14.14:1	110.24
82615	RPS-82615	100,000ct	10,000ct	2500	.1	.1	.03	.3	8000	950	238	3.16:1	6.32:1	110.24

82620	82615 RPS- 82620	135,000ct	82 ct	20.5	.07	.07	.03	.2	10,800	7.8	1.9	40.6:1	81.2:1	115.15
-------	------------------------	-----------	-------	------	-----	-----	-----	----	--------	-----	-----	--------	--------	--------

*Includes electrostatic shield

**Miniaturized telephoned coupling application

***Discount Prices:

- 1-9 Net;
- 10-24 less 10%;
- 25-49 less 16%;
- 50-99 less 23%;
- 100-499 less 30%

Ordering Instructions:

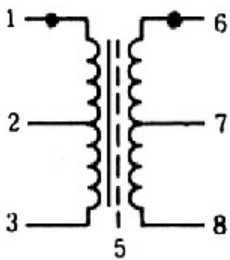
- No minimum.
- Net 30 days F.O.B. Pelham, NY

Delivery--stock to one week for sample orders.

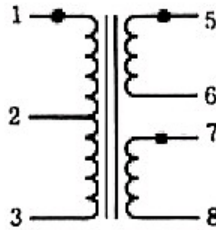
Features

- Extreme resistance to thermal shock.
- Ultra miniature size.
- PICO is approved QPL source (MIL-PRF-27).
- Magnetic shields available.
- Electrostatic shielding can be added.
- Variation of standard designs available.
- Primary and secondary windings can be used either as input or output.
- Every unit in this catalog can be made with a 300 thermal cycle guarantee using PICO's special SR construction. Contact factory for details.

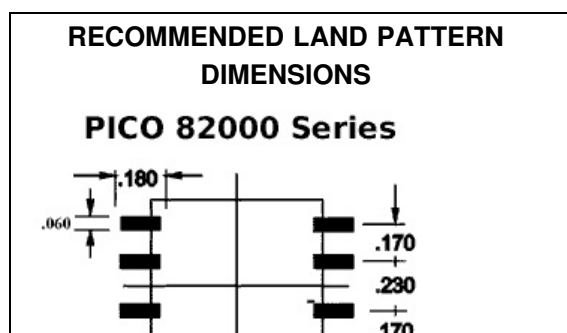
Schematics
for Transformers
with Electrostatic Shield

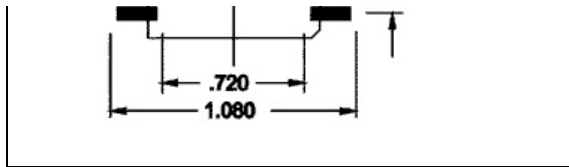


Schematics
for Transformers
with Split Secondaries



[Click Here for Thru Hole Version of 82000 Series \(http://www.picoelectronics.com/node/13251\)](http://www.picoelectronics.com/node/13251)





For immediate engineering assistance or to place an order:

Call Toll Free: 800-431-1064

PICO Electronics, Inc.

143 Sparks Ave. Pelham, NY 10803-1810

Tel: 914-738-1400 or Fax: 914-738-8225

Go back to Surface Mount Transformers and Inductors menu (<http://www.picoelectronics.com/surface-mount-transformers-inductors>)

(http://www.webstat.com/free_web_counter.php)
