



Figure 1. Directional characteristic  $S_{REL}=f(\varphi)$

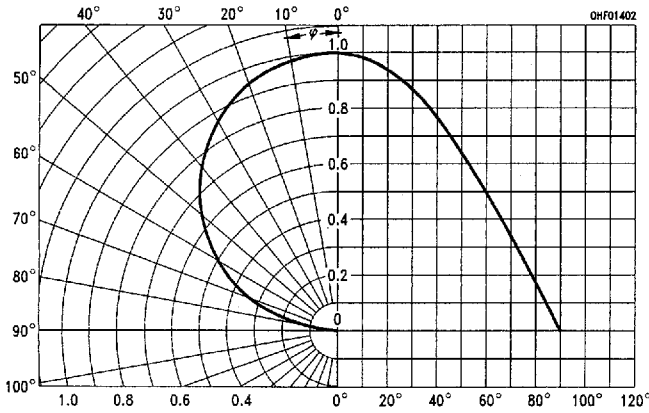


Figure 2. Relative spectral sensitivity  $S_{REL}=f(\lambda)$

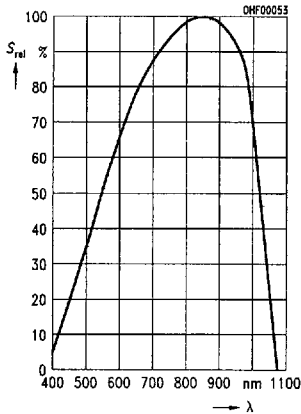


Figure 4. Capacitance  $C=f(V_R)$ ,  $f=1$  HM,  $E=0$

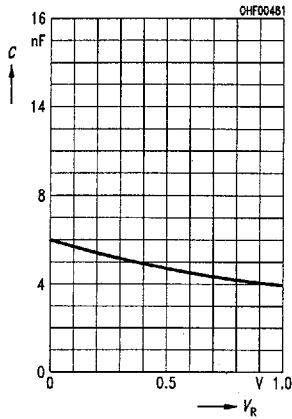
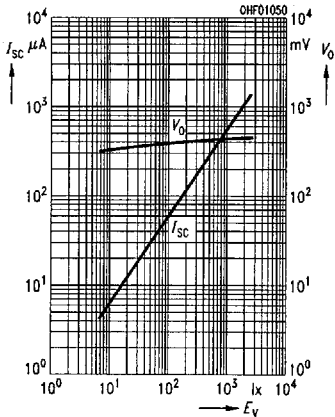
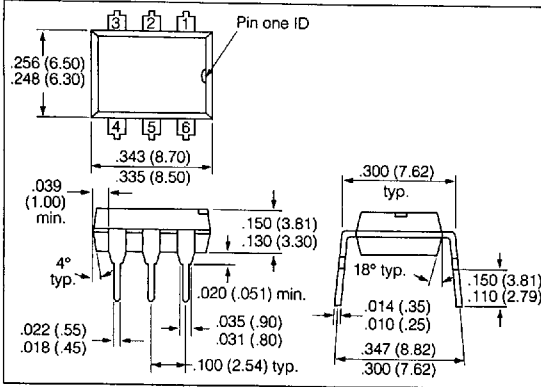


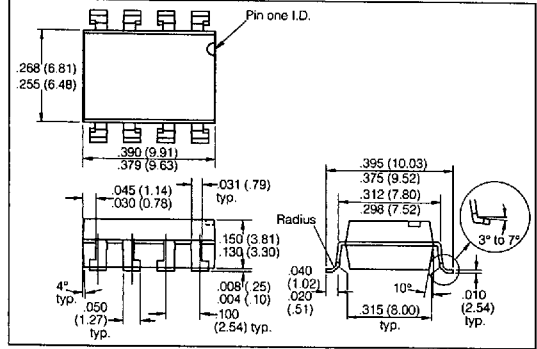
Figure 3. Open circuit voltage  $V_O=f(E_V)$   
Short circuit voltage  $V_{SC}=f(E_V)$



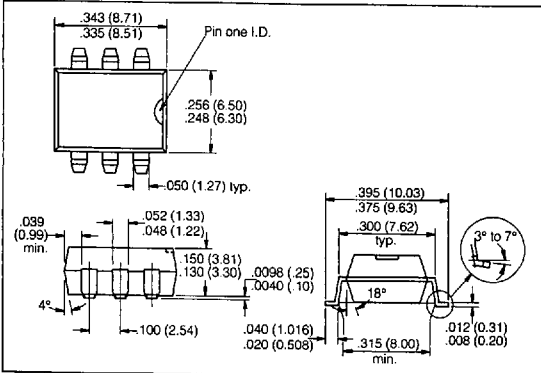
**Figure 1. 6-pin DIP**



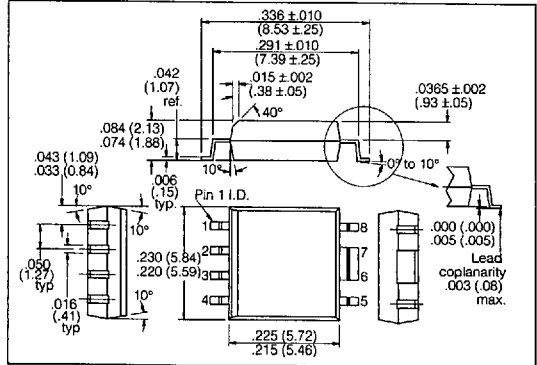
**Figure 4. 8-pin, SMD**



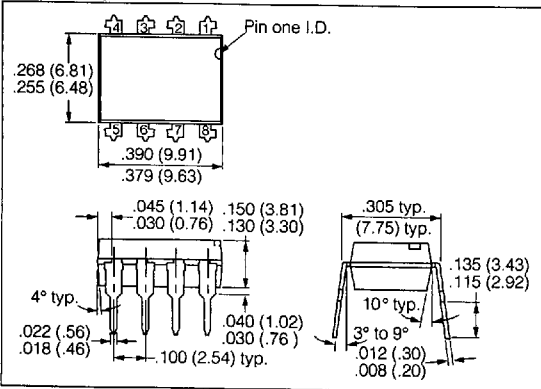
**Figure 2. 6-pin, SMD**



**Figure 5. 8-pin SOP (PCMCIA)**



**Figure 3. 8-pin DIP**



**Figure 6. 18-pin SOP (PCMCIA)**

