



**3 PHASE, FULL WAVE BRIDGE RECTIFIER  
GLASS PASSIVATED CHIPS  
RUGGED SCREW TERMINALS  
ISOLATED BASE  
INDUSTRIAL QUALITY**

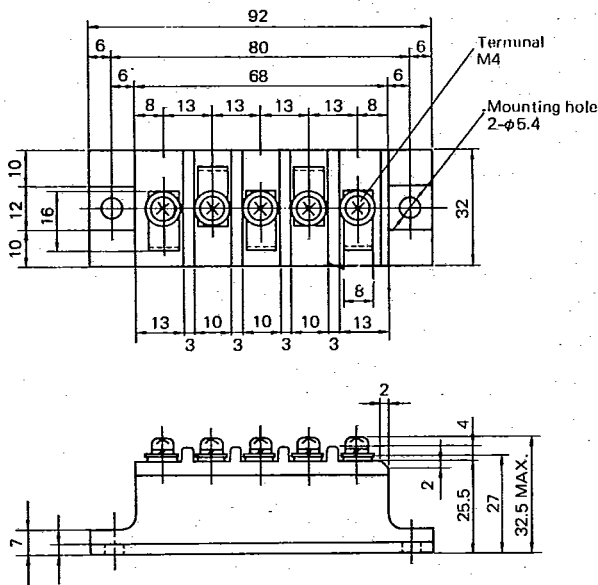
# 50 Amp Silicon Bridge Rectifiers

2238792 COLLMER SEMICONDUCTOR INC

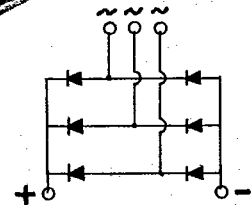
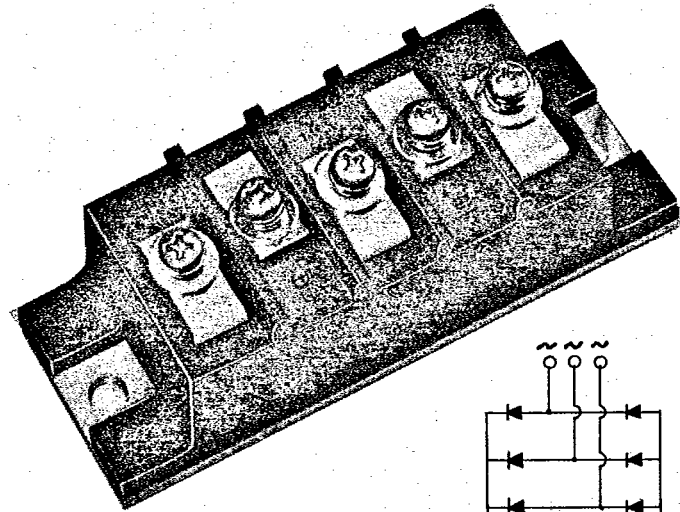
74C 00717

D

T-23-09



Mounting torque: 25-35kg.cm



ITEM	SYMBOL	CONDITION	ESAG31		UNIT
			-06T	-08T	
Voltage Ratings	Repetitive Peak Reverse Voltage	$V_{RRM}$	600	800	V
	Non-Repetitive Peak Reverse Voltage	$V_{RSM}$	660	880	V
Current Ratings	Average Output Current	$I_O$	50		A
	One Cycle Surge Current (50Hz)	$I_{FSM}$	480		A
	$I^2t$	$I^2t$	920		$A^2s$
Forward Voltage		$V_{FM}$	1.20		V
Reverse Current		$I_{RRM}$	5		mA
Thermal Resistance		$R_{th(j-c)}$	0.6		$^{\circ}C/W$
Temperature Ratings	Operating Junction Temperature	$T_j$	-40 to +150		$^{\circ}C$
	Storage Junction Temperature	$T_{stg}$	-40 to +150		$^{\circ}C$
Mechanical	Mounting Torque		25 ± 5		Kg·cm

Isolation 2000VAC, 1 min.

COLLMER SEMICONDUCTOR, INC. reserves the right to make changes in these specifications at any time and without notice in order to supply the best product possible.

©1984 • COLLMER SEMICONDUCTOR, INC.  
Printed in U.S.A.

**FUJI** Semiconductors • Imported and Distributed by:  
**Collmer Semiconductor, Inc.**

14368 Proton Rd. • Dallas, Texas 75234  
214/233-1589 • TWX No.: 910-860-5462 • FAX 214/233-0481