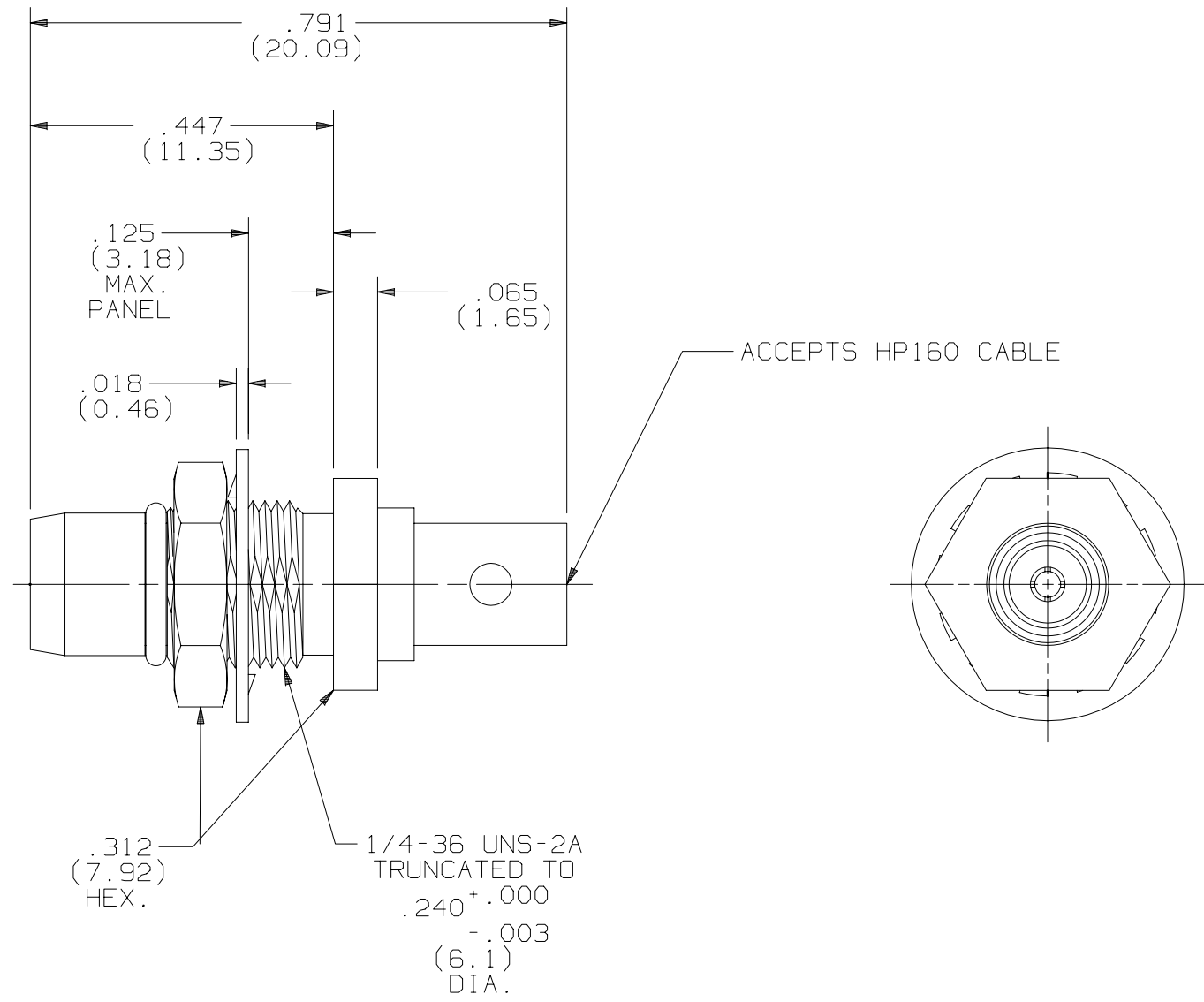


# PRODUCT DATA DRAWING

CAD GENERATED DRAWING	DCN CONTROLLED DOCUMENT	DWG. NO.  <b>1708-6009</b>
-----------------------------	-------------------------------	----------------------------------



### MATERIAL:

BODY &  
HEX NUT: STAINLESS STEEL PER AMS-5640,  
UNS S30300, TYPE I.

CONTACT: BERYLLIUM COPPER PER ASTM-B-196,  
ALLOY C17300

GASKET: FLUORCARBON RUBBER PER MIL-R-83248B  
TYPE 1, CLASS 1.

INSULATOR: PTFE PER ASTM-D-1710.

LOCK WASHER: STAINLESS STEEL PER ASTM-A-240,  
ALLOY UNS S30400, TYPE 304

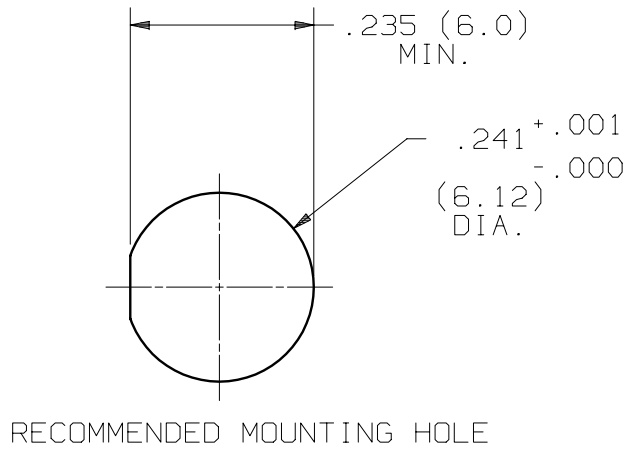
### FINISH:

BODY &  
CONTACT: GOLD PER ASTM B 488, TYPE II,  
GRADE C, CLASS 1.27; OVER  
NICKEL PER QQ-N-290, CLASS 1

HEX NUT &  
LOCK WASHER: GOLD PER ASTM B 488, TYPE II,  
GRADE C, CLASS .51; OVER NICKEL  
PER QQ-N-290.

### PERFORMANCE:

IMPEDANCE: 50 OHMS  
FREQ. RANGE: DC-22.0 GHZ  
DWV: 1000 VRMS  
INSUL. RES.: 5000 MEGOHMS, MIN.



DIMENSIONS IN ( ) ARE IN MM

SYM.	DESCRIPTION	DATE	APPR.	UNLESS OTHERWISE SPECIFIED: 1) ALL DIMENSIONS ARE AFTER PLATING. 2) BREAK CORNERS & EDGES .005 R. MAX. 3) CHAM. 1st & LAST THDS. 4) SURFACE ROUGHNESS 63 / MIL-STD-10. 5) DIAS. ON COMMON CENTERS TO BE CONCENTRIC WITHIN .005 T.I.R. 6) REMOVE ALL BURRS.	DIMENSIONS ARE IN INCHES TOLERANCES:			<b>SV Microwave, Inc.</b> 2400 Centrepark West Drive, Suite 100 West Palm Beach, FL 33409
-	REL. DCN 32275	10/04	STW		DECIMALS .X ±.030 .XX ±.015 .XXX ±.005	FRACTIONAL ±1/64	ANGULAR X° ±1°0' X°X' ±15'	
				DRAWN: STW 10/24/04	MATERIAL: SEE ABOVE		□" AREA: N/A	DWG. NO. <b>1708-6009</b>
				CHECKED: STW 10/24/04	FINISH: SEE ABOVE	SIZE <b>B</b>	CAGE NO. <b>95077</b>	SCALE <b>4X</b>
				APPROVED: STW 10/24/04				