

ZZVV-65A-R4N43



8-port sector antenna, 4x 1427-2690, and 4x 1695-2690 MHz 65° HPBW, 4 x RET

- All Internal RET actuators are connected in “Cascaded SRET” configuration
- Retractable tilt indicator rods
- Antenna shape optimized for wind load reduction

General Specifications

Antenna Type	Sector
Band	Multiband
Color	Light Gray (RAL 7035)
Grounding Type	RF connector inner conductor and body grounded to reflector and mounting bracket
Performance Note	Outdoor usage
Radome Material	Fiberglass, UV resistant
Reflector Material	Aluminum
RF Connector Interface	4.3-10 Female
RF Connector Location	Bottom
RF Connector Quantity, mid band	8
RF Connector Quantity, total	8

Remote Electrical Tilt (RET) Information

RET Hardware	CommRET v2
RET Interface	8-pin DIN Female 8-pin DIN Male
RET Interface, quantity	2 female 2 male
Input Voltage	10–30 Vdc
Internal RET	Mid band (4)
Power Consumption, active state, maximum	8 W
Power Consumption, idle state, maximum	1 W
Protocol	3GPP/AISG 2.0 (Single RET)

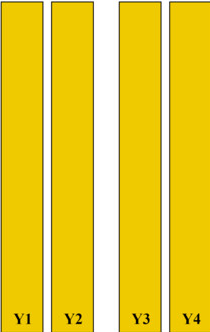
Dimensions

Width	430 mm 16.929 in
--------------	--------------------

ZZVV-65A-R4N43

Depth	197 mm 7.756 in
Length	1546 mm 60.866 in
Net Weight, antenna only	26.3 kg 57.982 lb

Array Layout

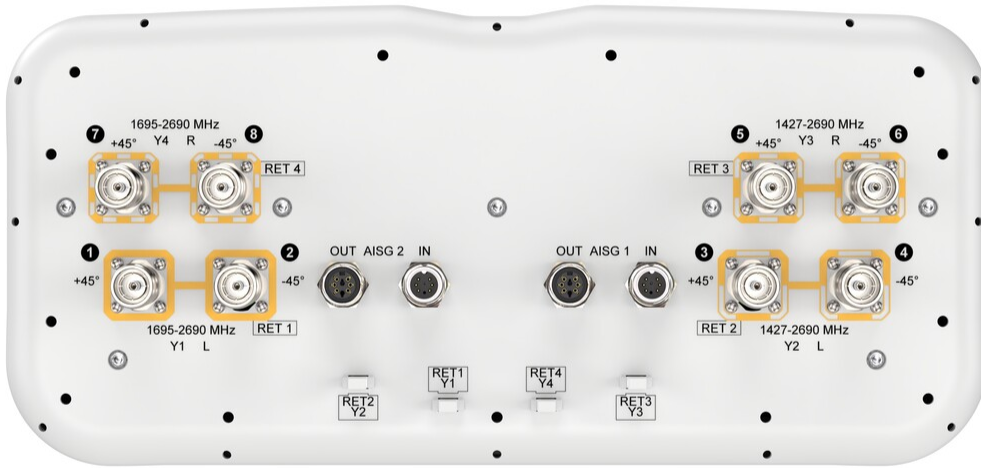


Array ID	Frequency (MHz)	RF Connector	RET (SRET)	AISG No.	AISG RET UID
Y1	1695-2690	1 - 2	1	AISG1	CPXXXXXXXXXXXXXXY1
Y2	1427-2690	3 - 4	2	AISG1	CPXXXXXXXXXXXXXXY2
Y3	1427-2690	5 - 6	3	AISG1	CPXXXXXXXXXXXXXXY3
Y4	1695-2690	7 - 8	4	AISG1	CPXXXXXXXXXXXXXXY4

(Sizes of colored boxes are not true depictions of array sizes)

Port Configuration

ZZVV-65A-R4N43



Electrical Specifications

Impedance	50 ohm
Operating Frequency Band	1427 – 2690 MHz 1695 – 2690 MHz
Polarization	±45°
Total Input Power, maximum	800 W @ 50 °C

Electrical Specifications

Frequency Band, MHz	1427–1518	1695–1990	1920–2300	2300–2500	2490–2690	1695–1990	1920–2300	2300–2500	2490–2690
Beamwidth, Horizontal, degrees	73	73	74	69	62	72	67	67	62
Beamwidth, Vertical, degrees	7.9	6.6	5.9	5.1	4.8	6.2	5.5	4.9	4.7

ZZVV-65A-R4N43

Beam Tilt, degrees	2-12	2-12	2-12	2-12	2-12	2-12	2-12	2-12	2-12
USLS (First Lobe), dB	18	18	17	19	18	18	18	19	19
Front-to-Back Ratio at 180°, dB	35	35	34	31	31	32	33	32	32
Front-to-Back Total Power at 180° ± 30°, dB	25	26	27	26	25	26	27	25	25
Isolation, Cross Polarization, dB	26	26	26	26	26	27	27	27	27
Isolation, Inter-band, dB	26	26	26	26	26	26	27	27	27
VSWR Return loss, dB	1.5 14.0	1.5 14.0	1.5 14.0	1.5 14.0	1.5 14.0	1.5 14.0	1.5 14.0	1.5 14.0	1.5 14.0
PIM, 3rd Order, 2 x 20 W, dBc	-153	-153	-153	-153	-153	-153	-153	-153	-153
Input Power per Port at 50°C, maximum, watts	200	200	200	150	150	200	200	150	150

Electrical Specifications, BASTA

Frequency Band, MHz	1427-1518	1695-1990	1920-2300	2300-2500	2490-2690	1695-1990	1920-2300	2300-2500	2490-2690
Gain by all Beam Tilts, average, dBi	15.4	16.7	17.2	18	18.4	16.7	17.5	17.9	18.3
Gain by all Beam Tilts Tolerance, dB	±0.6	±0.7	±0.7	±0.7	±0.6	±0.5	±0.7	±0.4	±0.4
Beamwidth, Horizontal Tolerance, degrees	±3.2	±7.9	±5.4	±3.7	±4.8	±4.7	±7.4	±4.2	±5.9
Beamwidth, Vertical Tolerance, degrees	±0.5	±0.5	±0.7	±0.3	±0.3	±0.5	±0.5	±0.2	±0.3
USLS, beampeak to 20° above beampeak, dB	13	16	17	18	18	14	15	17	16
CPR at Boresight, dB	17	21	18	16	17	21	22	24	24
CPR at Sector, dB	9	7	7	6	4	12	9	8	8

Mechanical Specifications

Wind Loading @ Velocity, frontal	364.0 N @ 150 km/h (81.8 lbf @ 150 km/h)
Wind Loading @ Velocity, lateral	196.0 N @ 150 km/h (44.1 lbf @ 150 km/h)
Wind Loading @ Velocity, maximum	574.0 N @ 150 km/h (129.0 lbf @ 150 km/h)
Wind Loading @ Velocity, rear	235.0 N @ 150 km/h (52.8 lbf @ 150 km/h)
Wind Speed, maximum	241 km/h 149.75 mph

Packaging and Weights

ZZVV-65A-R4N43

Width, packed	530 mm 20.866 in
Depth, packed	349 mm 13.74 in
Length, packed	1718 mm 67.638 in
Weight, gross	38.2 kg 84.216 lb

Regulatory Compliance/Certifications

Agency	Classification
CHINA-ROHS	Above maximum concentration value
ISO 9001:2015	Designed, manufactured and/or distributed under this quality management system
ROHS	Compliant/Exempted
UK-ROHS	Compliant/Exempted



Included Products

BSAMNT-3	-	Wide Profile Antenna Downtilt Mounting Kit for 2.4 - 4.5 in (60 - 115 mm) OD round members. Kit contains one scissor top bracket set and one bottom bracket set.
----------	---	--

* Footnotes

Performance Note	Severe environmental conditions may degrade optimum performance
-------------------------	---