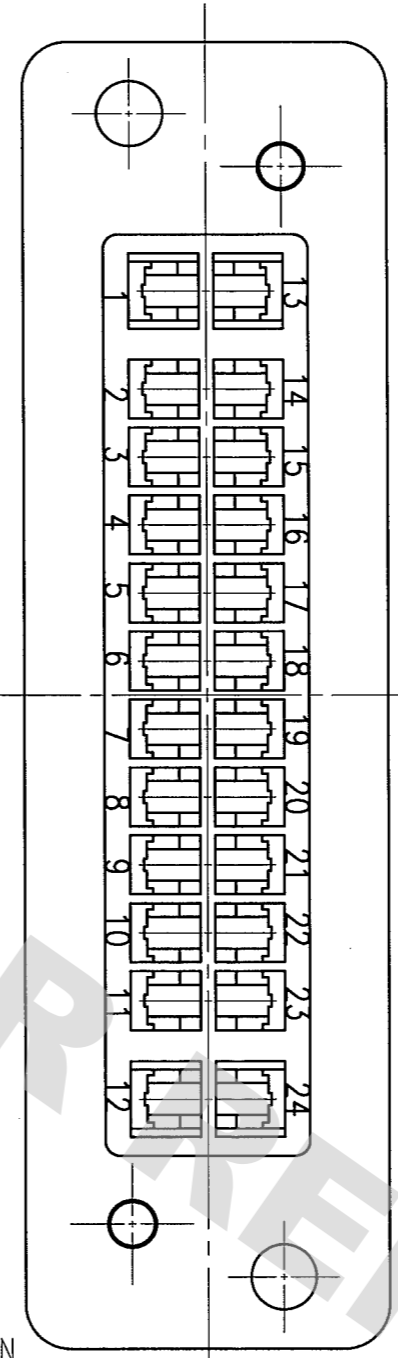
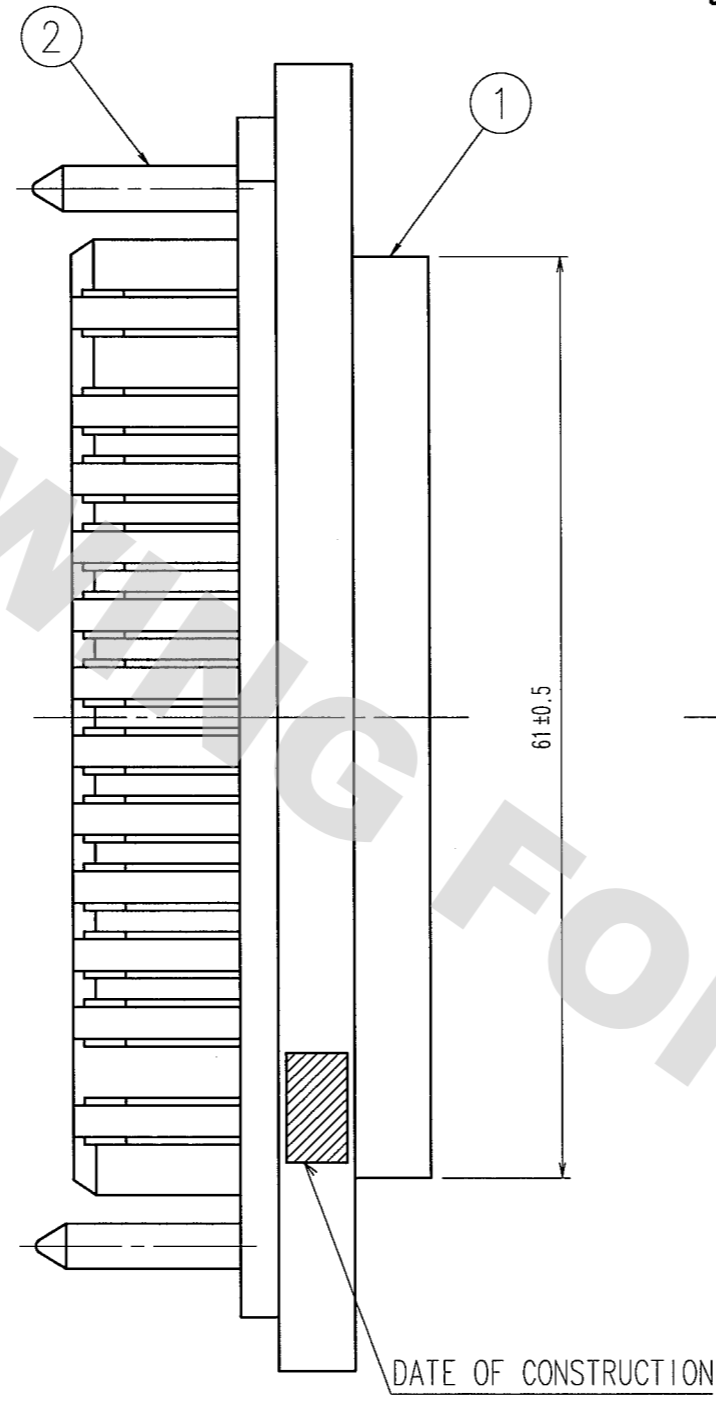
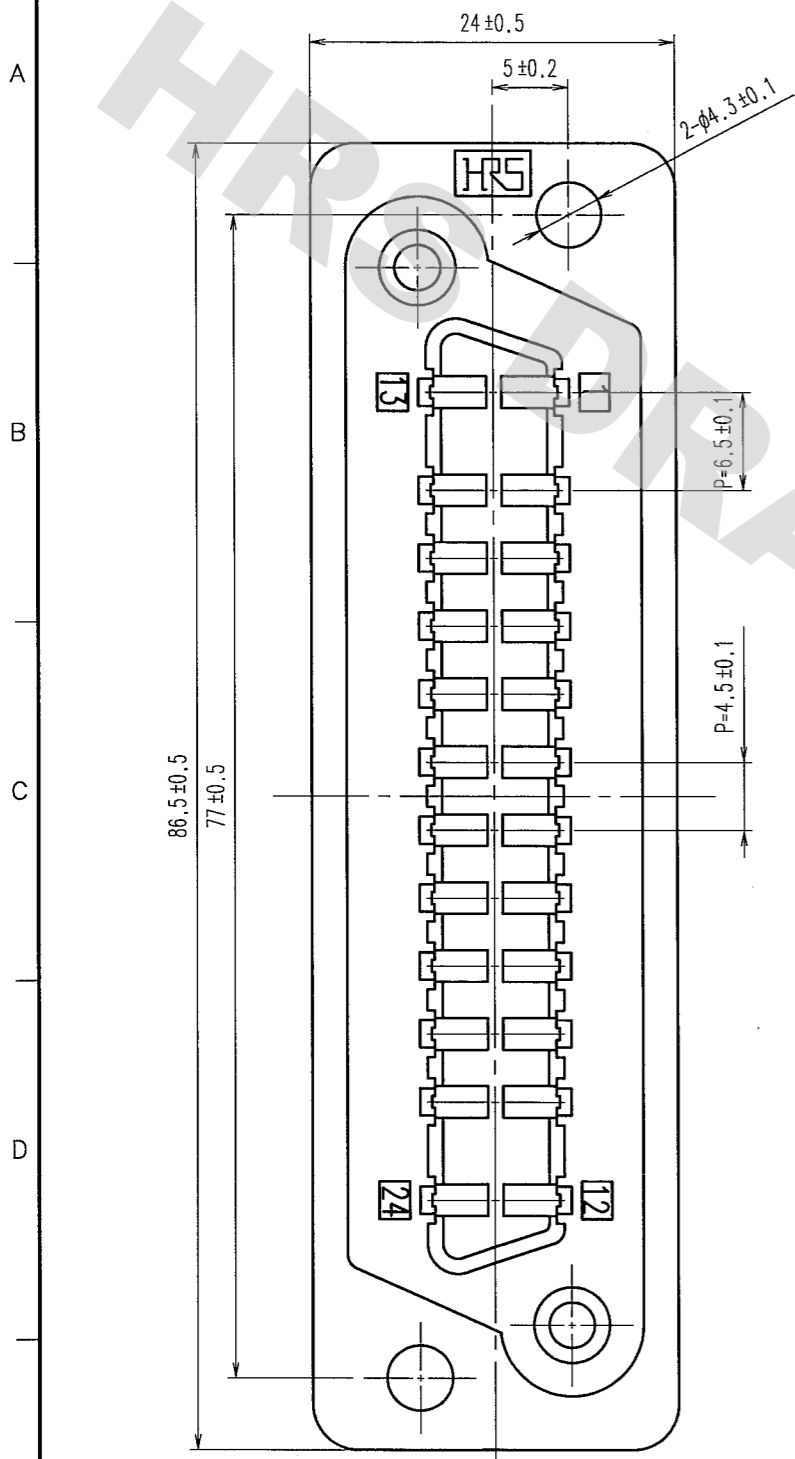


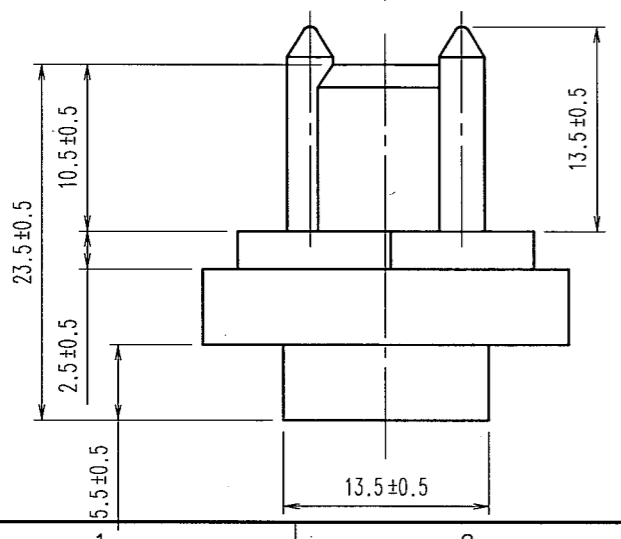
COUNT	DESCRIPTION OF REVISIONS	BY	CHKD	DATE	COUNT	DESCRIPTION OF REVISIONS	BY	CHKD	DATE
1	DIS-E-000525	Y.S	H.M	06.06.22					



- NOTES
- 1 CURRENT RATING AND RATED CURRENT ARE AS PER TABLE-1.
 - 2 DIRECTIONS FOR USE
 - (1) APPLICABLE CONTACTS ARE AS FOLLOWS.
QR/P-XC-111, QR/P-XC-121,
QR/P-XC-211, QR/P-XC-221,
 - (2) KINDRY NOTE NOT TO USE FOR THE PURPOSE OF INTERRUPTING THE CURRENT.
 - (3) PLEASE USE THIS CONNECTOR IN ENCLOSURE OR UNIT.
 - (4) THE RATED TEMPERATURE OF APPLICABLE CABLE SHALL BE OVER 80°C STRANDED WIRE. (APPLICABLE TO UL STANDARD).
 - (5) IT DEPENDS ON APPLICABLE EQUIPMENT WHETHER TO USE OR NOT STRAIN RELIEFE FOR CABLE. (APPLICABLE TO ONLY UL STANDARD).

TABLE-1

SAFETY STANDARD		UL	CSA	TÜV
OPERATING TEMPERATURE RANGE		-10 ~ +60°		
RATED VOLTAGE	CONTACT NO. 1, 12, 13, 14	AC120V	AC250V	AC250V
	OTHER CONTACTS		AC600V	DC300V
CURRENT RATING	AWG#14	10A	10A	10A
	AWG#16		8A	1A
	AWG#18	3A	3A	5A
	AWG#20		2A	2.5A
	AWG#22		1A	1A
AWG#24				



RECOGNIZED UL MATERIAL	
COMPANY NAME	GE PLASTICS JAPAN LTD.
MODEL NO.	VALOX 420-SEO
COLOR	BLUE
UL94 FLAME CLASS	94V-0
FILE.NO.	E45317

1	PBT	3	2	STEEL	NICKEL PLATED
NO.	MATERIAL	FINISH, REMARKS	NO.	MATERIAL	FINISH, REMARKS
CODE NO. (OLD)		DRAWN	DESIGNED	CHECKED	APPROVED
		T.WATANABE	T.WATANABE	H.MIWA	H.MIWA
		05.11.14	05.11.14	05.11.14	05.11.14
DRAWING NO.		PART NO.			
EDC3-008212-01		QR/P-24P-C(01)			
SCALE		CODE NO.			
2 : 1		CL221-0004-9-01			
UNITS		HRS			
mm		HIROSE ELECTRIC CO., LTD			

DRAWING FOR REFERENCE: This is subject to change without notice
08/11/2012

TO
Q1